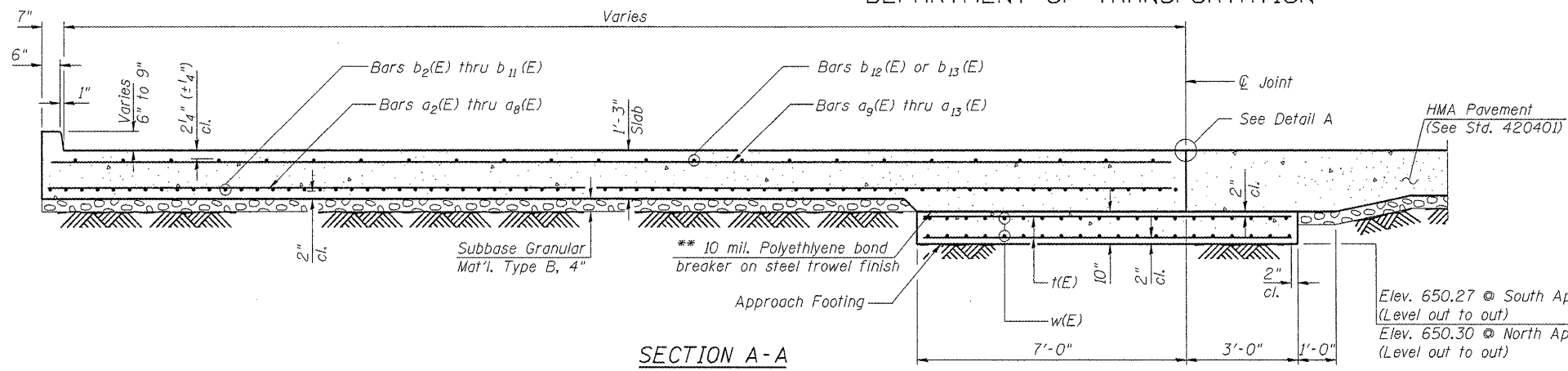


STATE OF ILLINOIS
DEPARTMENT OF TRANSPORTATION

Notes:
Approach slab concrete shall be paid for as Concrete Superstructure.
Approach footing concrete shall be paid for as Concrete Structures.
Reinforcement shall be paid for as Reinforcement Bars, Epoxy Coated.
For v(E) bar details, see sheets 13 or 14 of 15.
The approach footing maximum applied service bearing pressure (Omax) = 2.0 ksf.
For bar splicer details, see sheet 15 of 15.
Cost of excavation for approach footing included with Concrete Structures.

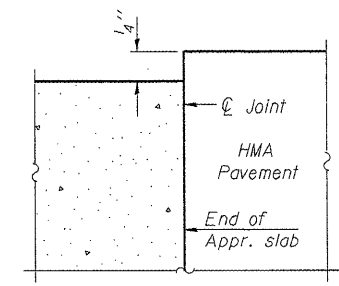
** Cost included with Concrete Superstructure



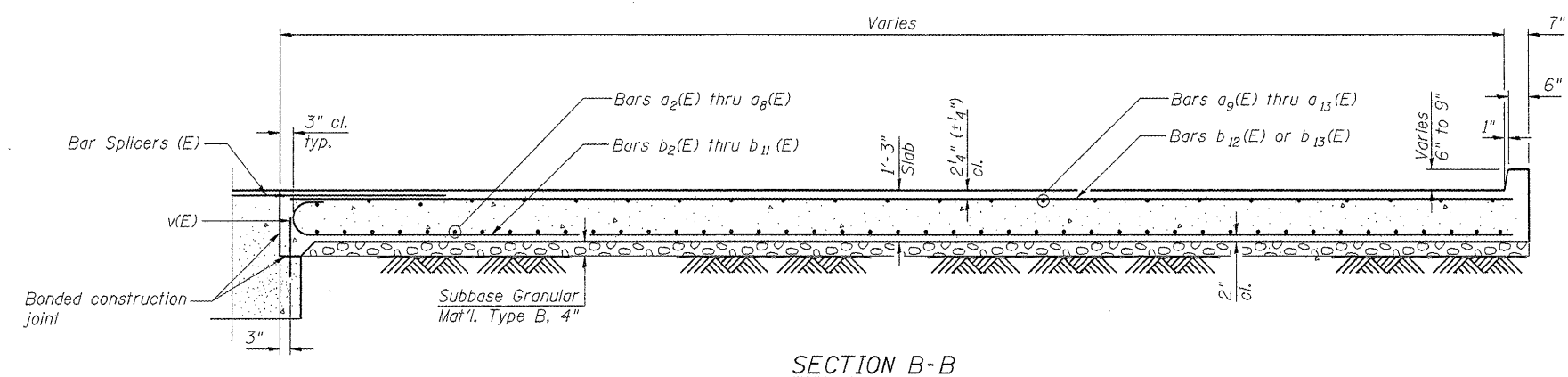
Elev. 650.27 @ South Approach Slab
(Level out to out)
Elev. 650.30 @ North Approach Slab
(Level out to out)

TWO BRIDGE APPROACHES
BILL OF MATERIAL

Bar	No.	Size	Length	Shape
a2(E)	18	#5	32'-8"	—
a3(E)	14	#5	36'-3"	—
a4(E)	44	#5	38'-10"	—
a5(E)	34	#5	34'-11"	—
a6(E)	22	#5	27'-5"	—
a7(E)	8	#5	18'-10"	—
a8(E)	12	#5	14'-2"	—
a9(E)	10	#4	32'-10"	—
a10(E)	76	#4	20'-6"	—
a11(E)	28	#4	17'-2"	—
a12(E)	10	#4	25'-6"	—
a13(E)	10	#4	17'-3"	—
b2(E)	10	#9	22'-11"	C
b3(E)	10	#9	27'-9"	C
b4(E)	10	#9	31'-6"	C
b5(E)	20	#9	37'-2"	C
b6(E)	20	#9	41'-4"	C
b7(E)	20	#9	44'-7"	C
b8(E)	20	#9	47'-2"	C
b9(E)	20	#9	49'-1"	C
b10(E)	26	#9	50'-10"	C
b11(E)	18	#5	42'-5"	—
b12(E)	24	#4	39'-10"	—
b13(E)	76	#4	25'-9"	—
t(E)	168	#4	9'-8"	—
w(E)	80	#5	40'-4"	—
Concrete Structures			Cu. Yd.	25.2
Concrete Superstructure			Cu. Yd.	151.4
Bridge Deck Grooving			Sq. Yd.	346
Protective Coat			Sq. Yd.	348
Reinforcement Bars, Epoxy Coated			Pound	36,390



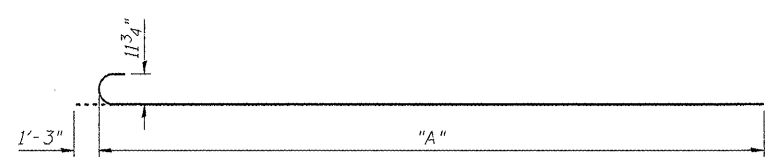
DETAIL A



SECTION B-B

TABLE OF DIMENSIONS
BARS b2(E) THRU b10(E)

Bar	Dimension "A"
b2(E)	21'-8"
b3(E)	26'-6"
b4(E)	30'-3"
b5(E)	35'-11"
b6(E)	40'-1"
b7(E)	43'-4"
b8(E)	45'-11"
b9(E)	47'-10"
b10(E)	49'-7"



BARS b2(E) THRU b10(E)

BRIDGE APPROACH SLAB DETAILS
STRUCTURE NO. 016-2529

DESIGNED -	BPS
CHECKED -	GSP
DRAWN -	BPS/MJB
CHECKED -	GSP

SHEET NO. 7 15 SHEETS	F.A.P RTE.	SECTION	COUNTY	TOTAL SHEETS	SHEET NO.
	305	1415 B	COOK	75	30
FED. ROAD DIST. NO. 7			ILLINOIS	FED. AID PROJECT	
			CONTRACT NO. 60F60		



g:\proj\ec\2082305\cadd\structure\ant\0162529-Ba3.dgn