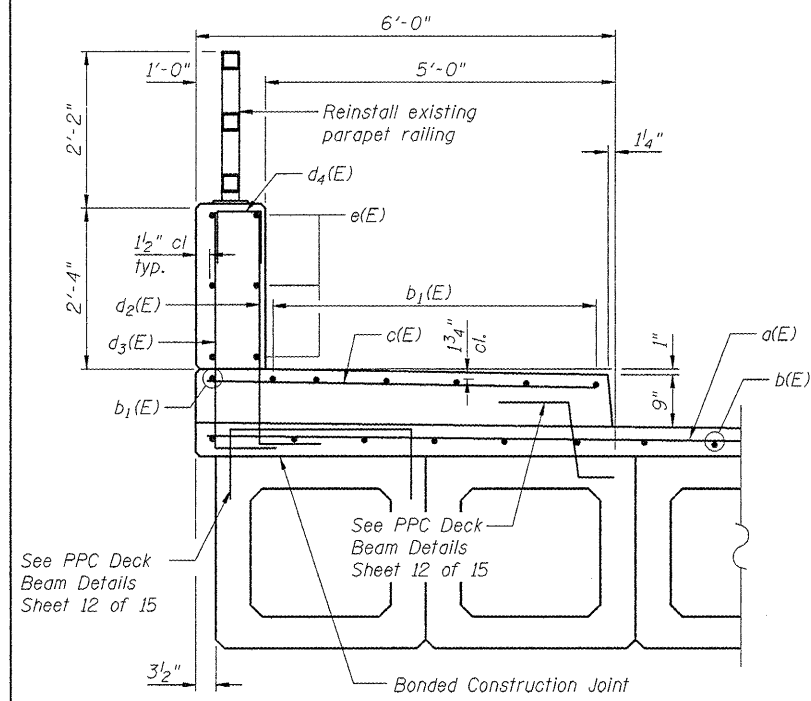


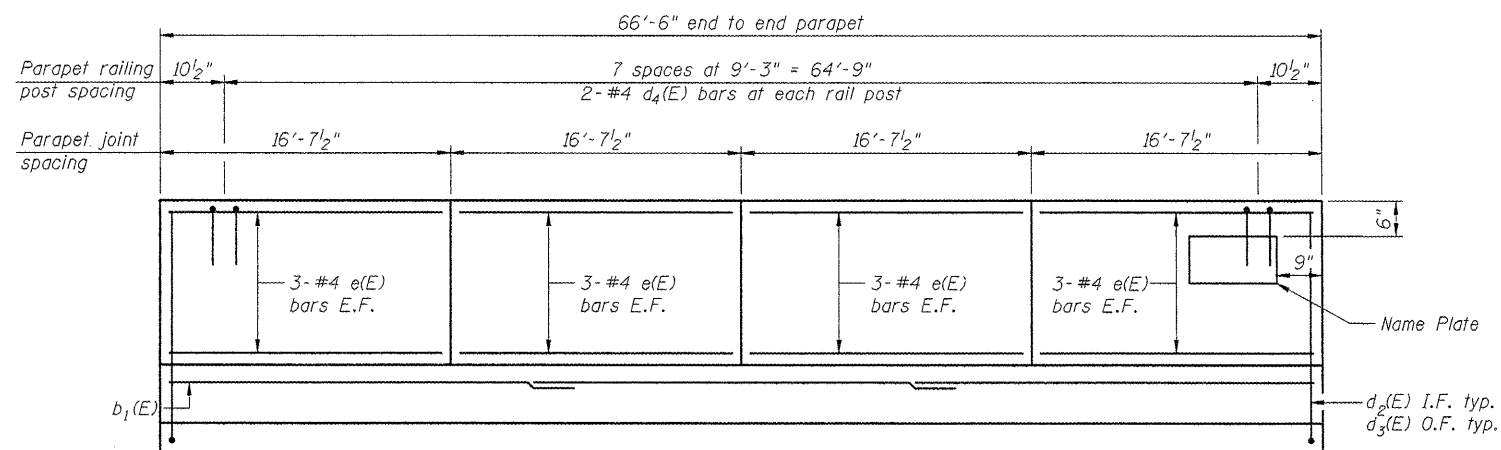
STATE OF ILLINOIS
DEPARTMENT OF TRANSPORTATION

SUPERSTRUCTURE
BILL OF MATERIAL

Bar	No.	Size	Length	Shape
a(E)	134	#4	20'-4"	—
a ₁ (E)	66	#4	6'-0"	—
b(E)	117	#4	23'-0"	—
b ₁ (E)	30	#5	23'-2"	—
c(E)	67	#5	5'-8"	—
d(E)	74	#5	6'-10"	⏏
d ₁ (E)	74	#5	5'-10"	⏏
d ₂ (E)	67	#6	4'-4"	L
d ₃ (E)	67	#4	3'-10"	L
d ₄ (E)	16	#4	2'-2"	n
e(E)	52	#4	16'-3"	—
e ₁ (E)	3	#4	23'-2"	—
e ₂ (E)	3	#8	25'-1"	—
Item		Unit	Quantity	
Concrete Superstructure		Cu. Yd.	37.1	
Bridge Deck Grooving		Sq. Yd.	236	
Protective Coat		Sq. Yd.	347	
Reinforcement Bars, Epoxy Coated		Pound	7,430	
Concrete Wearing Surface, 5"		Sq. Yd.	292.5	

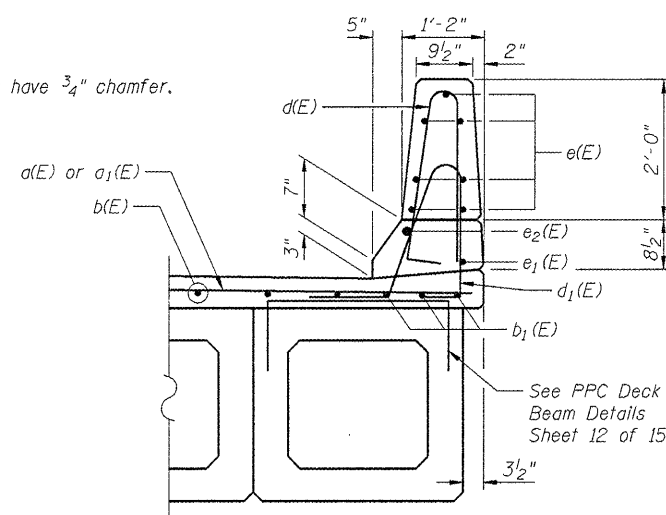


SECTION THRU SIDEWALK PARAPET AND SIDEWALK

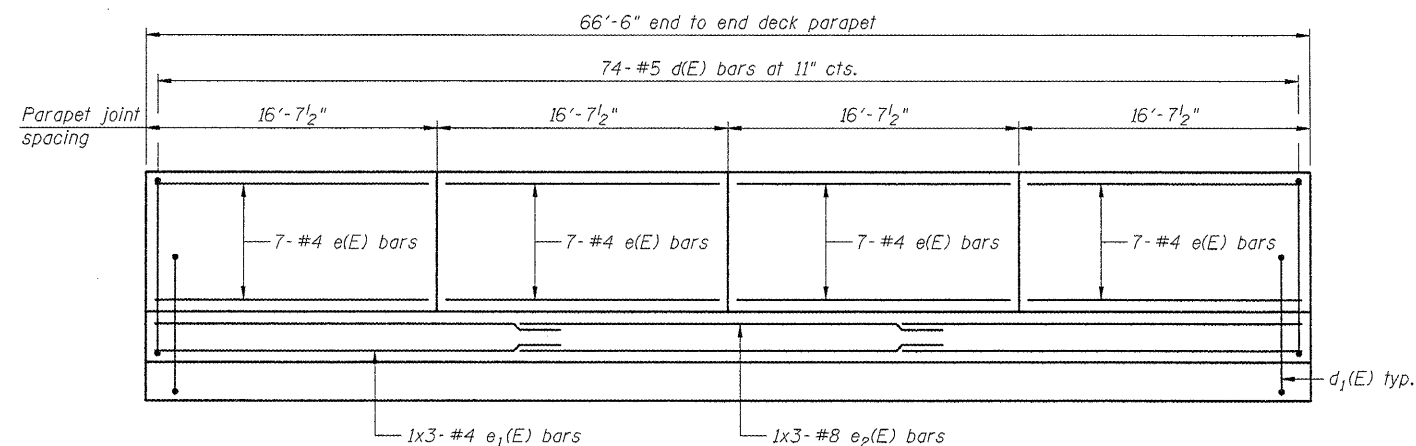


INSIDE ELEVATION OF SIDEWALK PARAPET

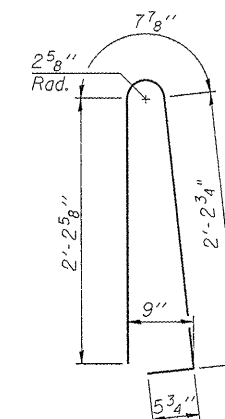
Note: All edges have 3/4" chamfer.



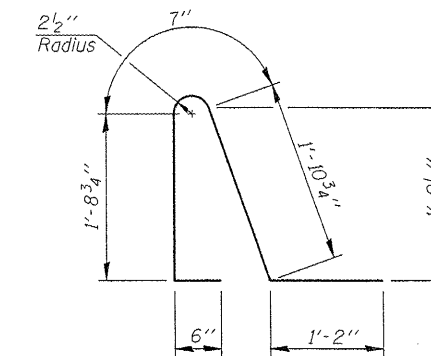
SECTION THRU ROADWAY PARAPET



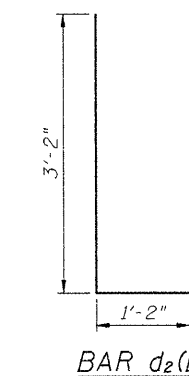
INSIDE ELEVATION OF ROADWAY PARAPET



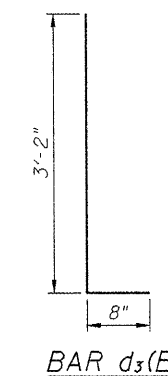
BAR d(E)



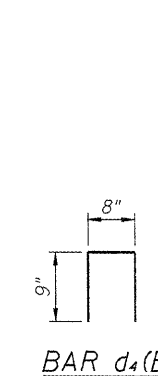
BAR d1(E)



BAR d2(E)



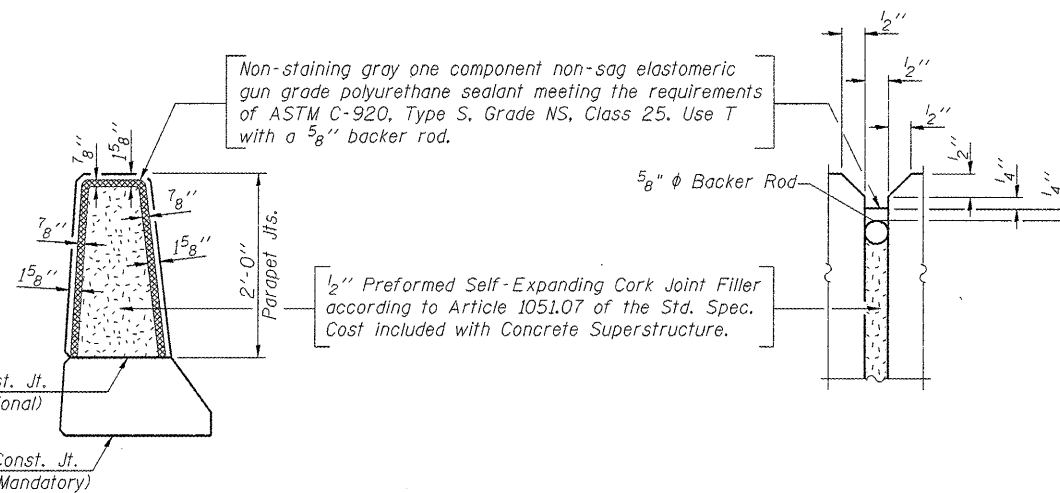
BAR d3(E)



BAR d4(E)

MINIMUM BAR LAPS

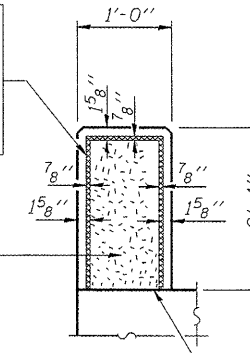
- (Parapets)
- #4 bar = 1'-4"
- #8 bar = 3'-5"



PARAPET JOINT DETAILS

Non-staining gray one component non-sag elastomeric gun grade polyurethane sealant meeting the requirements of ASTM C-920, Type S, Grade NS, Class 25. Use T with a 5/8" backer rod.

1/2" Preformed Self-Expanding Cork Joint Filler according to Article 1051.07 of the Std. Spec. Cost included with Concrete Superstructure.



Const. Jt. (Mandatory)

SUPERSTRUCTURE DETAILS
STRUCTURE NO. 016-2529

DESIGNED -	BPS
CHECKED -	GSP
DRAWN -	BPS/MJB
CHECKED -	GSP

SHEET NO. 4
15 SHEETS

F.A.P. RTE.	SECTION	COUNTY	TOTAL SHEETS	SHEET NO.
305	1415 B	COOK	75	27
CONTRACT NO. 60F60				
FED. ROAD DIST. NO. 7 ILLINOIS FED. AID PROJECT				

