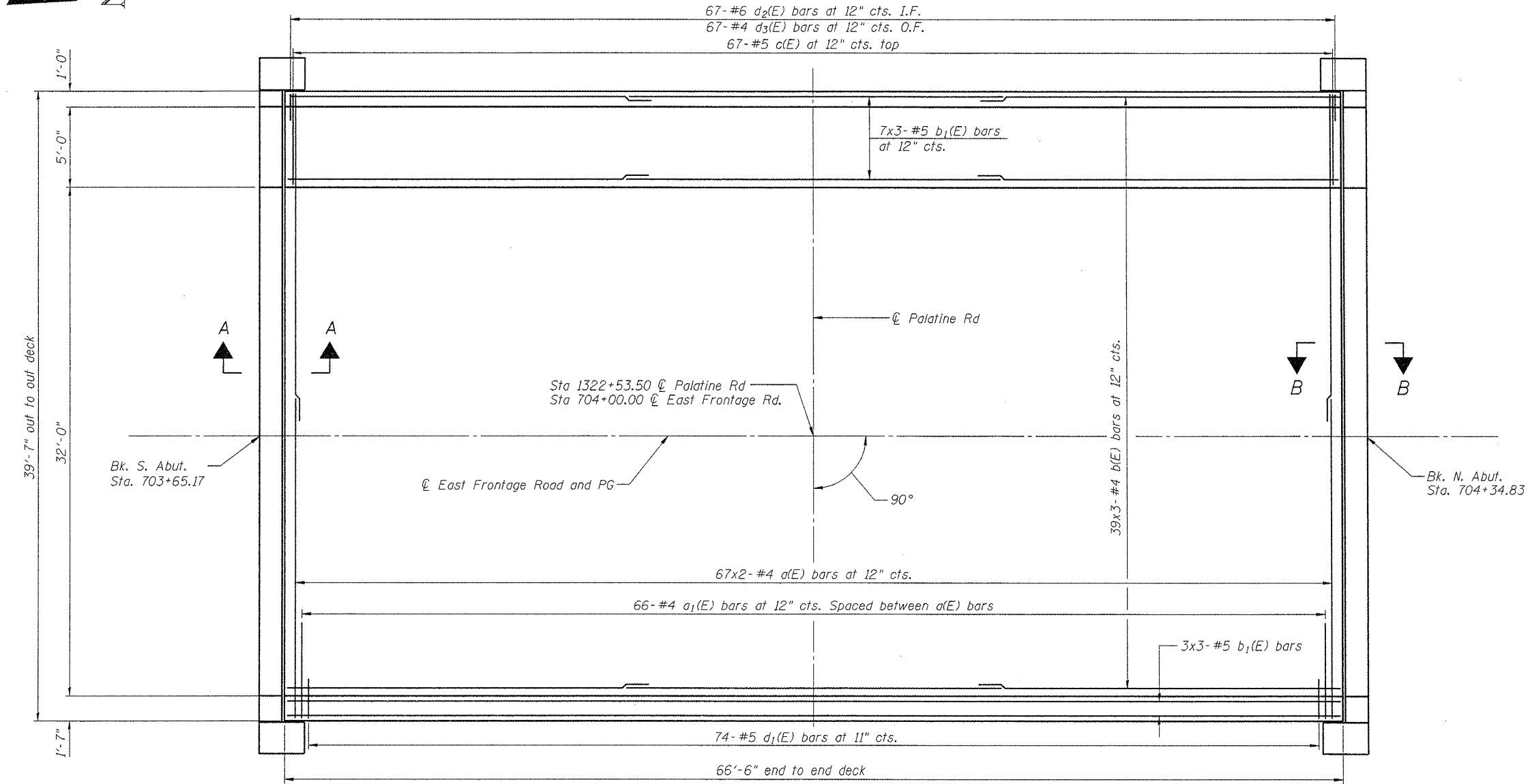
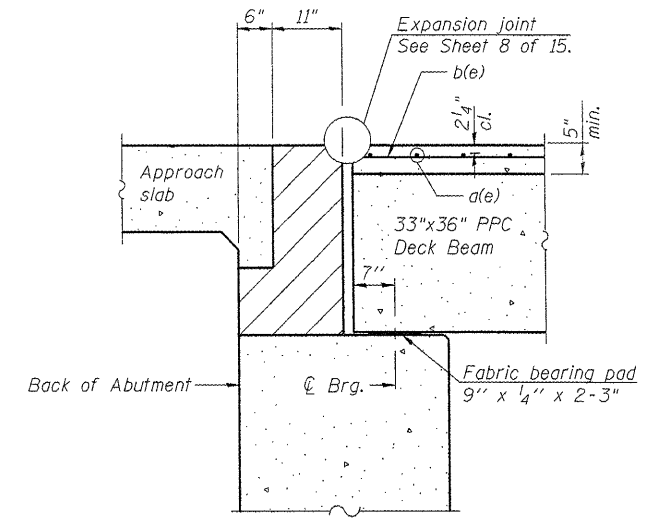


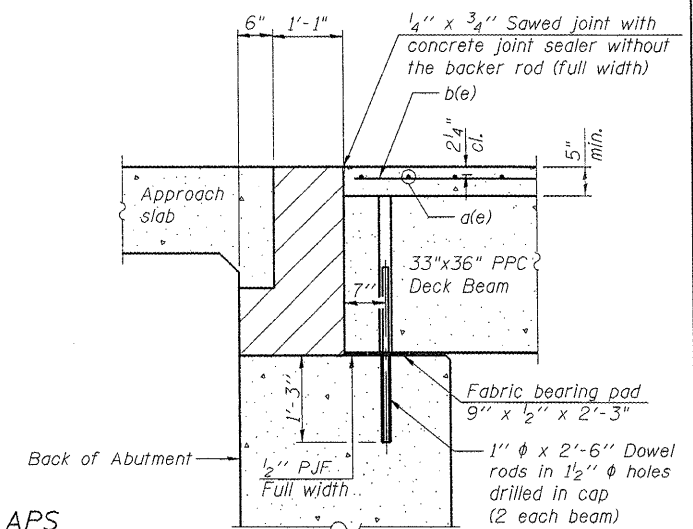
STATE OF ILLINOIS
DEPARTMENT OF TRANSPORTATION



DECK PLAN



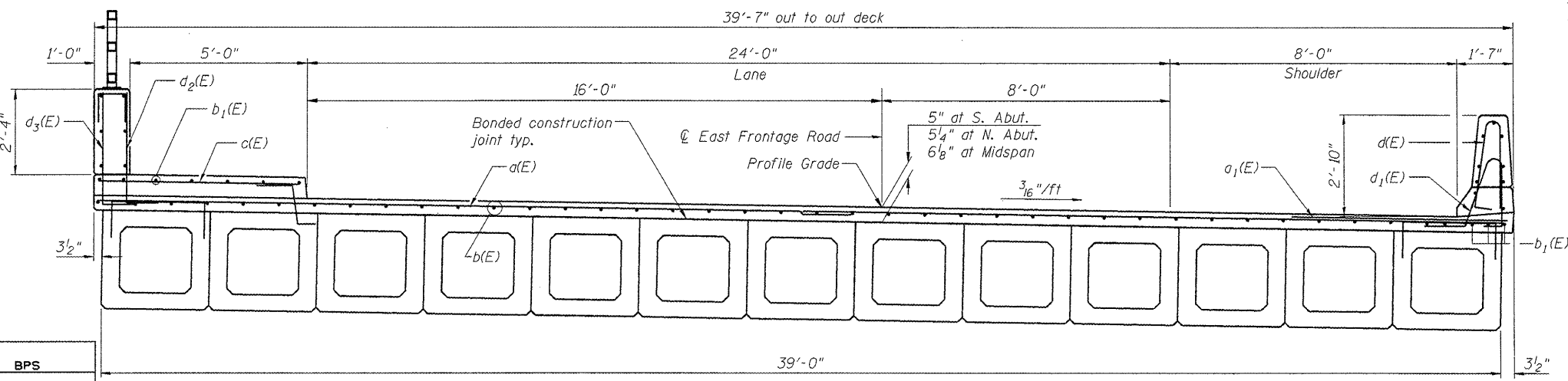
SECTION A-A



SECTION B-B

MINIMUM BAR LAPS
(Deck and Sidewalk)
#4 bar = 1'-4"
#5 bar = 1'-8"

Notes:
Hatched area to be poured after concrete wearing surface is in place. Quantity of concrete included with Concrete Superstructure.
After beams have been erected, holes shall be drilled into substructure and anchor dowels placed. Dowel holes shall be filled with non-shrink grout to top of beam and allowed to cure min. 24 hrs. prior to grouting the shear keys.
See sheet 4 of 15 for superstructure details and Bill of Materials.
Bars indicated thus 20x3-#5 etc. indicates 20 lines of bars with 3 lengths per line.
See sheet 4 of 15 for parapet reinforcement.
See sheet 12 of 15 for bearing pad details.



DECK CROSS SECTION
(Looking Upstation)

DECK PLAN
STRUCTURE NO. 016-2529

DESIGNED	BPS
CHECKED	GSP
DRAWN	BPS/MJB
CHECKED	GSP

SHEET NO. 3	F.A.P RTE.	SECTION	COUNTY	TOTAL SHEETS	SHEET NO.
	305	1415 B	COOK	75	26
15 SHEETS	CONTRACT NO. 60F60		FED. ROAD DIST. NO. 7 ILLINOIS FED. AID PROJECT		



g:\p\project\2082305\ce\dd\structure\sheet\0162529-DEC1.dgn