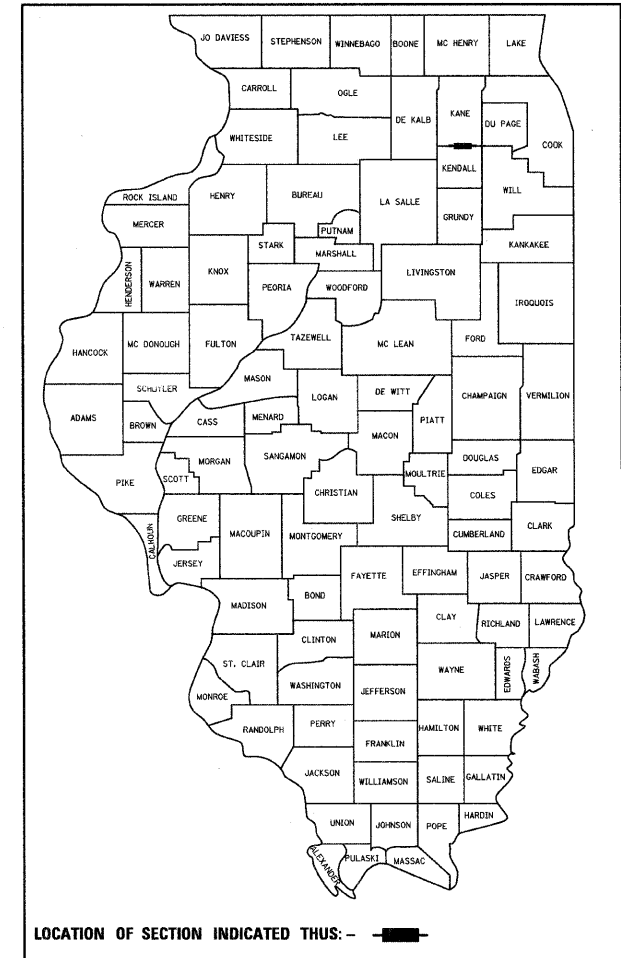


F.A.P. RTE.	SECTION	COUNTY	TOTAL SHEETS	SHEET NO.
349	10 RS-6	KANE	29	1
FED. ROAD DIST. NO. 1	ILLINOIS	CONTRACT NO. 60F27		

* 29+4=33

D-91-058-09



LOCATION OF SECTION INDICATED THIS: -

STATE OF ILLINOIS
DEPARTMENT OF TRANSPORTATION
DIVISION OF HIGHWAYS

**PROPOSED
HIGHWAY PLANS**

F.A.P. 349 / US 30
SECTION: 10 RS-6
IL 47 TO ORCHARD ROAD
RESURFACING (3P)
PROJECT: *ESP-0349(014)*
KANE AND KENDALL COUNTIES
C-91-058-09

FOR INDEX OF SHEETS, SEE SHEET NO. 2

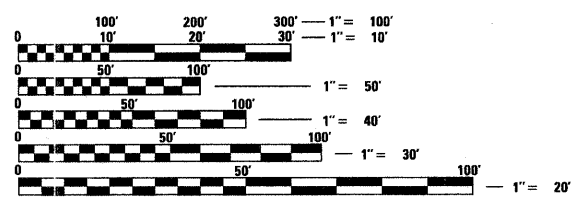
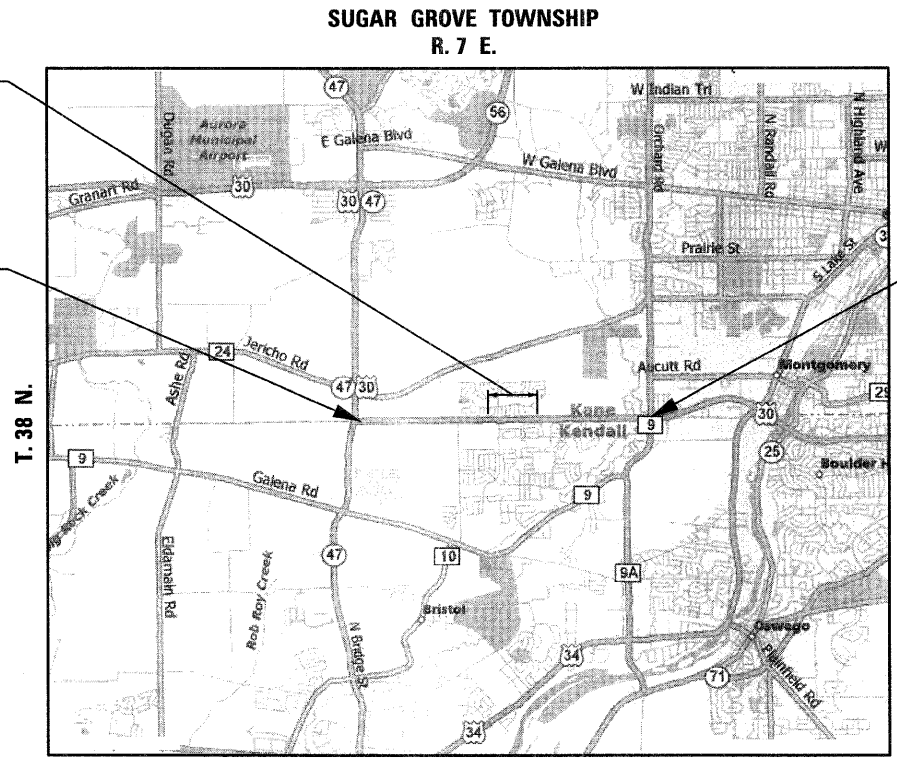
DESIGN DESIGNATION:
SPEED LIMIT : 55 M.P.H.
2007 ADT = 17,600

PROJECT IS LOCATED IN THE
VILLAGE OF MONTGOMERY

OMISSION:
STA. 94 + 00 TO
STA. 124 + 76

PROJECT BEGINS
STA. 10 + 29

PROJECT ENDS
STA. 187 + 86



FULL SIZE PLANS HAVE BEEN PREPARED USING STANDARD ENGINEERING SCALES. REDUCED SIZED PLANS WILL NOT CONFORM TO STANDARD SCALES. IN MAKING MEASUREMENTS ON REDUCED PLANS, THE ABOVE SCALES MAY BE USED.

J.U.L.I.E.
JOINT UTILITY LOCATING INFORMATION FOR EXCAVATORS
1-800-892-0123
OR 811

DISTRICT ONE - DESIGN
PLAN PREP ENGINEER: KEN ENG (847) 705-4247

CONTRACT NO. 60F27

GROSS LENGTH OF PROJECT = 17,757 FEET = 3.363 MILES
NET LENGTH OF PROJECT = 14,681 FEET = 2.781 MILES

STATE OF ILLINOIS
DEPARTMENT OF TRANSPORTATION
DIVISION OF HIGHWAYS

SUBMITTED JANUARY 29, 2009
Dina M. O'Keefe DEPUTY DIRECTOR OF HIGHWAYS, REGION ONE ENGINEER
March 27, 2009
Charles G. Ingemoll ENGINEER OF DESIGN AND ENVIRONMENT
March 27, 2009
Christine M. Reed DIRECTOR OF HIGHWAYS, CHIEF ENGINEER



Birinder S. Sachdeva January 28, 2009
BIRINDER S. SACHDEVA, P.E. DATE
EXPIRES: 11-30-2009

CR & A
CHRISTIAN-ROGE & ASSOCIATES, INC.
ENGINEERS - PLANNERS - SURVEYORS
211 W. WACKER DRIVE CHICAGO, IL. 60606
TELEPHONE: 312-372-2023

**PRINTED BY THE AUTHORITY
OF THE STATE OF ILLINOIS**