

RESTORATION OF WORK AREA RESTORATION OF THE TRAFFIC SIGNAL WORK AREA SHALL BE INCIDENTAL TO THE RELATED PAY ITEM SUCH AS FOUNDATION, CONDUIT, HANDHOLE, TRENCH AND BACKFILL, ETC., AND NO EXTRA COMPENSATION SHALL BE ALLOWED. ALL ROADWAY SURFACES SUCH AS SHOULDERS, MEDIAN, SIDEWALKS, PAVEMENT, ETC. SHALL BE REPLACED IN KIND. ALL DAMAGE TO MOWED LAWNS SHALL BE REPLACED WITH AN APPROVED SOD, AND ALL DAMAGE TO UNMOWED FIELDS SHALL BE SEEDING IN ACCORDANCE WITH STANDARD SPECIFICATIONS 252 AND 250 RESPECTIVELY.

CONSTRUCTION NOTES:

- ① RE-STRIP EXISTING THERMOPLASTIC PAVEMENT MARKING STOP LINE WITH HIGH VISIBILITY THERMOPLASTIC PAVEMENT MARKING STOP LINE 24" (TYP.)

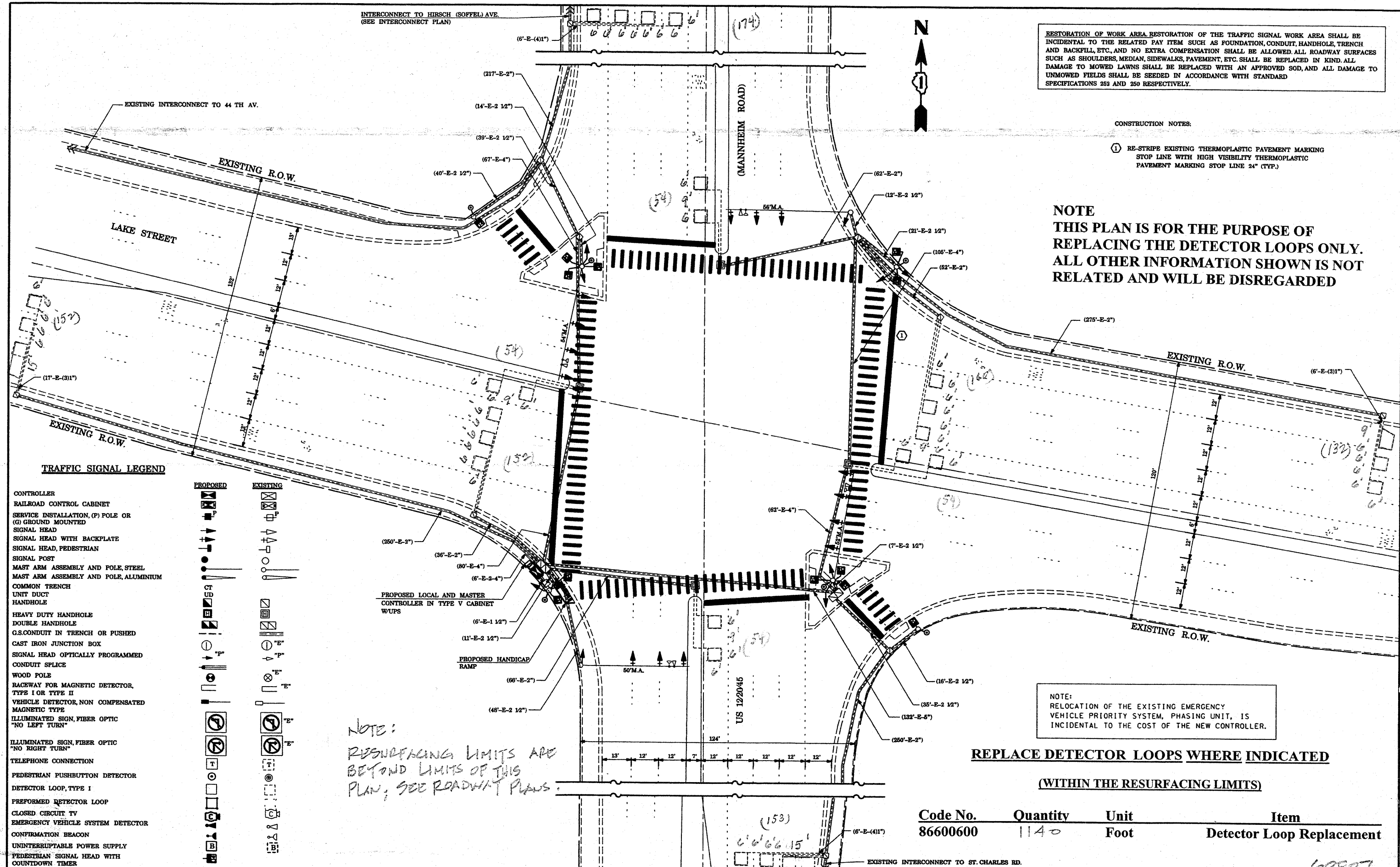
**NOTE**  
THIS PLAN IS FOR THE PURPOSE OF REPLACING THE DETECTOR LOOPS ONLY. ALL OTHER INFORMATION SHOWN IS NOT RELATED AND WILL BE DISREGARDED

NOTE:  
RELOCATION OF THE EXISTING EMERGENCY VEHICLE PRIORITY SYSTEM, PHASING UNIT, IS INCIDENTAL TO THE COST OF THE NEW CONTROLLER.

**REPLACE DETECTOR LOOPS WHERE INDICATED**  
**(WITHIN THE RESURFACING LIMITS)**

Code No.	Quantity	Unit	Item
86600600	1140	Foot	Detector Loop Replacement

NOTE:  
RESURFACING LIMITS ARE BEYOND LIMITS OF THIS PLAN; SEE ROADWAY PLANS.



**TRAFFIC SIGNAL LEGEND**

PROPOSED	EXISTING
CONTROLLER	
RAILROAD CONTROL CABINET	
SERVICE INSTALLATION, (P) POLE OR (G) GROUND MOUNTED	
SIGNAL HEAD	
SIGNAL HEAD WITH BACKPLATE	
SIGNAL HEAD, PEDESTRIAN	
SIGNAL POST	
MAST ARM ASSEMBLY AND POLE, STEEL	
MAST ARM ASSEMBLY AND POLE, ALUMINIUM	
COMMON TRENCH	
UNIT DUCT	
HANDHOLE	
HEAVY DUTY HANDHOLE	
DOUBLE HANDHOLE	
G.S. CONDUIT IN TRENCH OR PUSHED	
CAST IRON JUNCTION BOX	
SIGNAL HEAD OPTICALLY PROGRAMMED	
CONDUIT SPLICE	
WOOD POLE	
RACEWAY FOR MAGNETIC DETECTOR, TYPE I OR TYPE II	
VEHICLE DETECTOR, NON COMPENSATED MAGNETIC TYPE	
ILLUMINATED SIGN, FIBER OPTIC "NO LEFT TURN"	
ILLUMINATED SIGN, FIBER OPTIC "NO RIGHT TURN"	
TELEPHONE CONNECTION	
PEDESTRIAN PUSHBUTTON DETECTOR	
DETECTOR LOOP, TYPE I	
PREFORMED DETECTOR LOOP	
CLOSED CIRCUIT TV	
EMERGENCY VEHICLE SYSTEM DETECTOR	
CONFIRMATION BEACON	
UNINTERRUPTIBLE POWER SUPPLY	
PEDESTRIAN SIGNAL HEAD WITH COUNTDOWN TIMER	

PROPOSED LOCAL AND MASTER CONTROLLER IN TYPE V CABINET W/UPS

PROPOSED HANDICAP RAMP

FILE NAME =	USER NAME = kanthapixaybc	DESIGNED - N.B.	REVISED -	<b>STATE OF ILLINOIS DEPARTMENT OF TRANSPORTATION</b>	<b>PROPOSED TRAFFIC SIGNAL PLAN US 12/2045 (MANNHEIM ROAD) AT LAKE AVENUE</b>	F.A.P. RTE. 330	SECTION	COUNTY COOK	TOTAL SHEETS 24	SHEET NO. 13
PLOT SCALE = 40.0000 / IN.	CHECKED - D.B.	REVISED -	SCALE: 1" = 20'			SHEET NO. OF SHEETS	STA. TO STA.	FED. ROAD DIST. NO.	ILLINOIS FED. AID PROJECT	CONTRACT NO. 60E31
PLOT DATE = 10/10/2008	DATE = 09/04/2008	REVISED -								

\*464Y-RS-2