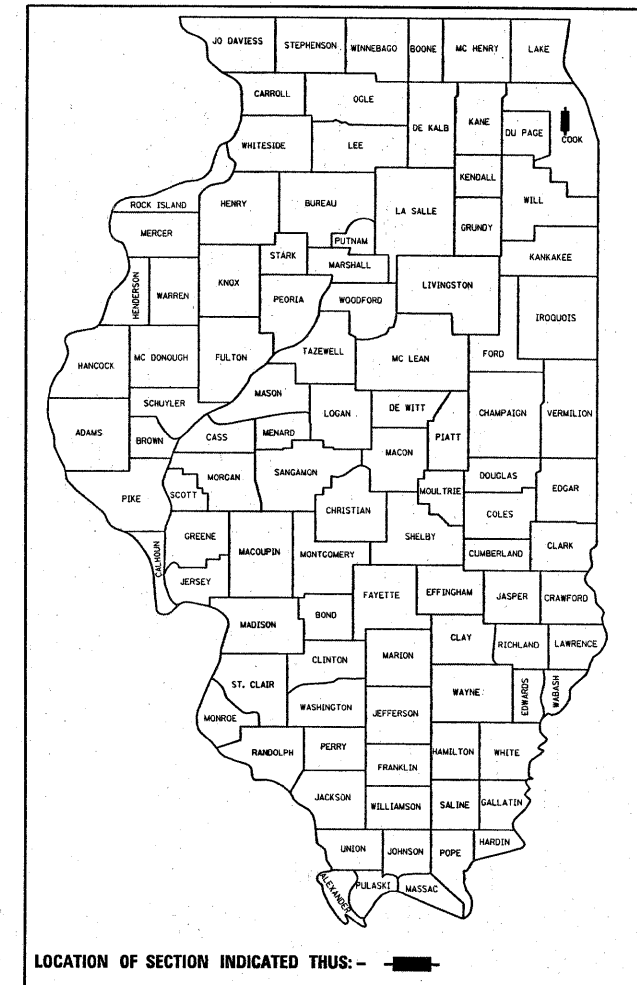


F.A.P. RTE.	SECTION	COUNTY	TOTAL SHEETS	SHEET NO.
330	464Y-RS-2	COOK	24	1
FED. ROAD DIST. NO.	ILLINOIS	CONTRACT NO. 60F07		

D -91-043-04



LOCATION OF SECTION INDICATED THUS: - -

STATE OF ILLINOIS  
DEPARTMENT OF TRANSPORTATION  
DIVISION OF HIGHWAYS  
**PROPOSED  
HIGHWAY PLANS**

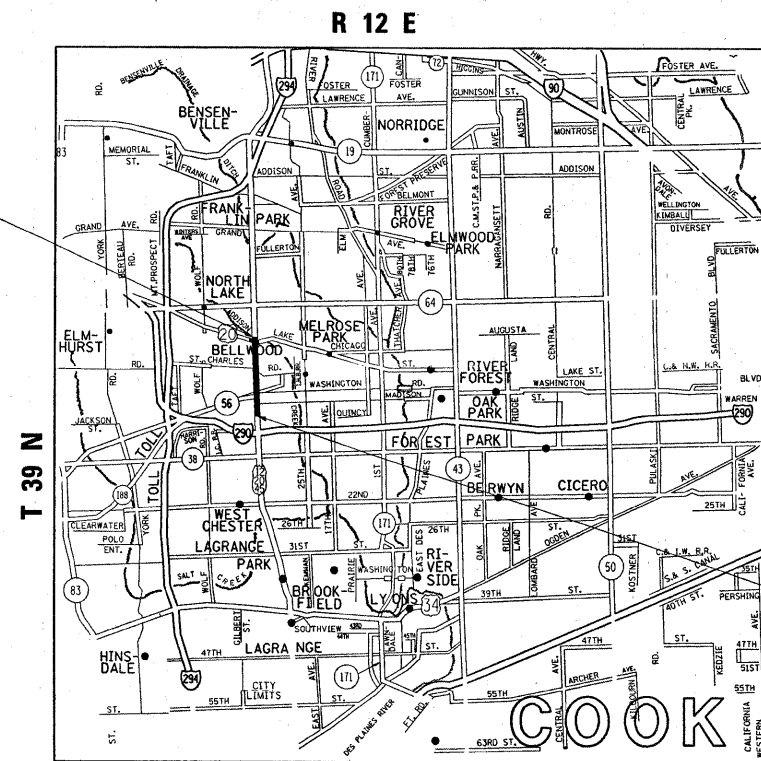
FAP 330 US 12/20/45 (MANNHEIM RD.)  
LAKE ST. TO I-290  
SECTION: 464Y-RS-2  
RESURFACING (MAINTENANCE)  
PROJECT: *ESP-0330(053)*  
COOK COUNTY  
C-91-028-09

FOR INDEX OF SHEETS, SEE SHEET NO. 2

THE PROJECT IS LOCATED IN THE VILLAGES OF BELLWOOD, HILLSIDE, MELROSE PARK AND STONE PARK

IMPROVEMENT ENDS  
STA. 117+48

OMISSION  
STA. 88+50 - STA. 102+58

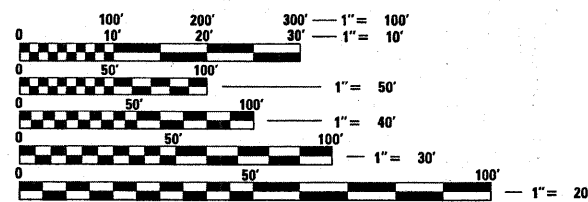


PROVISO TOWNSHIP

**TRAFFIC DATA**

2006 ADT = 41,100  
POSTED SPEED LIMIT = 30-35 MPH

IMPROVEMENT BEGINS  
STA. 29+67



FULL SIZE PLANS HAVE BEEN PREPARED USING STANDARD ENGINEERING SCALES. REDUCED SIZED PLANS WILL NOT CONFORM TO STANDARD SCALES. IN MAKING MEASUREMENTS ON REDUCED PLANS, THE ABOVE SCALES MAY BE USED.

J.U.L.I.E.  
JOINT UTILITY LOCATION INFORMATION FOR EXCAVATION  
1-800-892-0123  
OR 811

PROJECT ENGINEER FRITZ GUILLAUME  
PROJECT MANAGER KEN ENG (847) 705-4247

CONTRACT NO. 60F07

GROSS LENGTH OF IMPROVEMENT = 8,781 LINEAL FEET = 1.66 MILE  
NET LENGTH OF IMPROVEMENT = 7373 LINEAL FEET = 1.39 MILE

STATE OF ILLINOIS  
DEPARTMENT OF TRANSPORTATION  
DIVISION OF HIGHWAYS

SUBMITTED FEBRUARY 4, 20 09  
Diane M. O'Keefe DEPUTY DIRECTOR OF HIGHWAYS, REGION ENGINEER  
March 27, 20 09  
Charles G. Ingersoll ENGINEER OF DESIGN AND ENVIRONMENT  
March 27, 20 09  
Christie M. Reed DIRECTOR OF HIGHWAYS, CHIEF ENGINEER

**PRINTED BY THE AUTHORITY  
OF THE STATE OF ILLINOIS**