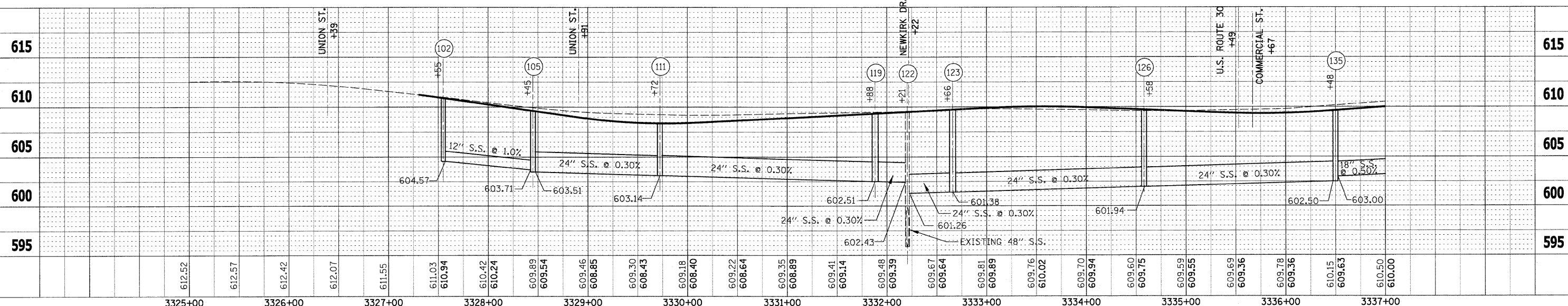
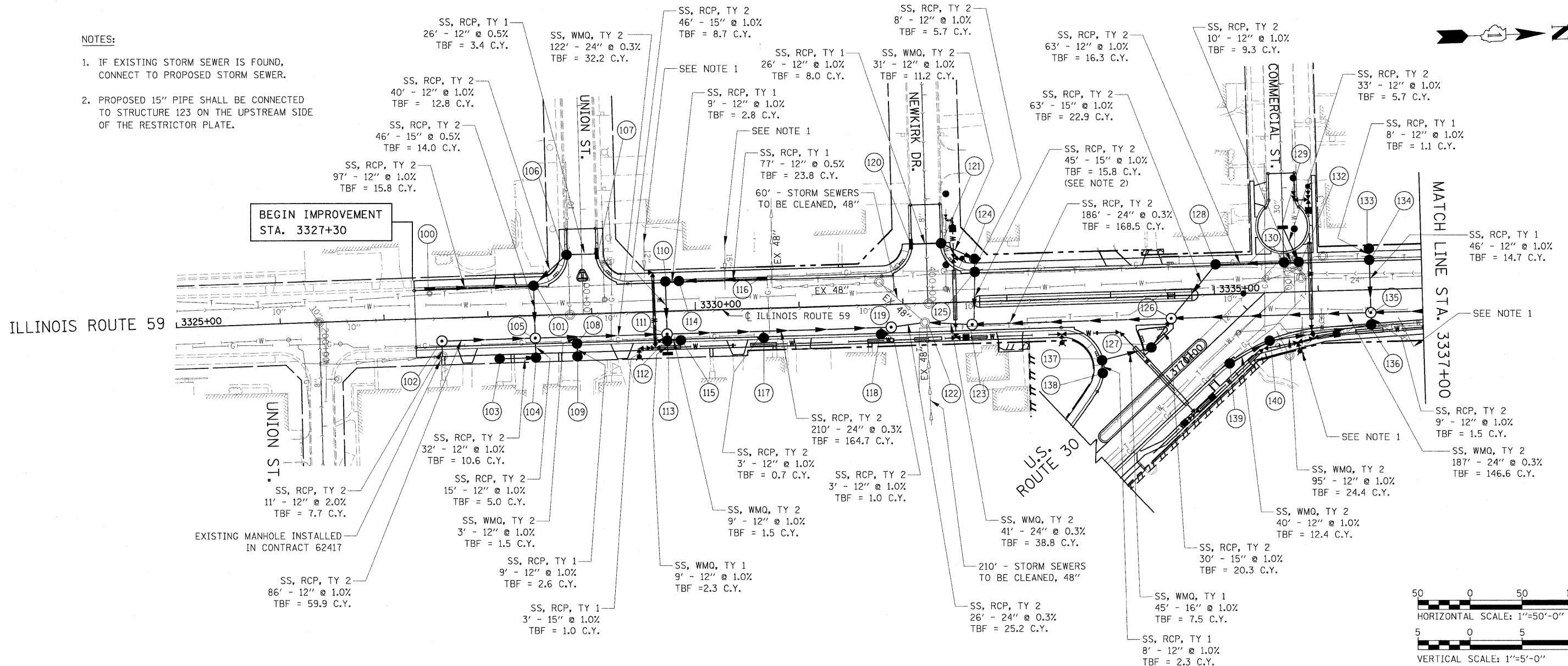


NOTES:

- IF EXISTING STORM SEWER IS FOUND, CONNECT TO PROPOSED STORM SEWER.
- PROPOSED 15" PIPE SHALL BE CONNECTED TO STRUCTURE 123 ON THE UPSTREAM SIDE OF THE RESTRICTOR PLATE.

DATE	
BY	
PLAN	
SURVEYED	
PLOTTED	
CHECKED	
BY	
NO.	
NOTE BOOK	
NO.	
ADD FILE NAME	

DATE	
BY	
PROFILE	
SURVEYED	
PLOTTED	
CHECKED	
BY	
NO.	
NOTE BOOK	
NO.	
ADD FILE NAME	



FILE NAME =	USER NAME = #USER#	DESIGNED - PJO	REVISED -	STATE OF ILLINOIS DEPARTMENT OF TRANSPORTATION	ILLINOIS ROUTE 59 DRAINAGE PLAN & PROFILE	F.A. RTE. 338	SECTION 113 N-2	COUNTY WILL	TOTAL SHEETS 260	SHEET NO. 109	
*FILE#	PLOT SCALE = #SCALE#	DRAWN - RTA	REVISED -			SCALE: AS SHOWN	SHEET NO. 1 OF 3 SHEETS	STA. 3327+30 TO STA. 3337+00	FED. ROAD DIST. NO. ILLINOIS	FAP 338 (IL. RTE. 59)	CONTRACT NO. 60E73
	PLOT DATE = #DATE#	CHECKED - JCM	REVISED -								
		DATE - JANUARY 16, 2009	REVISED -								