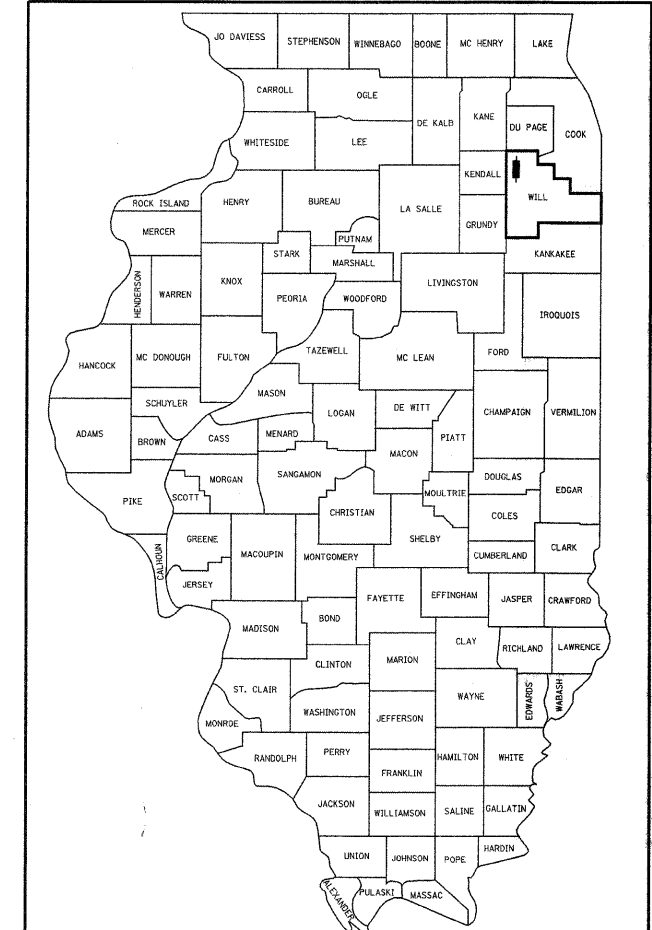


F.A. RTE.	SECTION	COUNTY	TOTAL SHEETS	SHEET NO.
338	(113 & 114) R-5	WILL	260	1
FED. ROAD DIST. NO.		ILLINOIS	CONTRACT NO. 60E73	

D-91-124-02



LOCATION OF SECTION INDICATED THUS: - [Symbol] -

STATE OF ILLINOIS
DEPARTMENT OF TRANSPORTATION
DIVISION OF HIGHWAYS
PROPOSED
HIGHWAY PLANS
(FAP 338) IL ROUTE 59
AT US ROUTE 30
SECTION 113 N-2
PROJECT NO: ESP-0338(037)
INTERSECTION RECONSTRUCTION
WILL COUNTY
C-91-514-08

INDEX OF SHEETS

SEE SHEET NO. 2

STANDARDS

SEE SHEET NO. 2

TRAFFIC DATA

ADT (IL ROUTE 59) = 22,300 (SPEED LIMIT SOUTH OF US ROUTE 30 = 35 MPH)

ADT (IL ROUTE 59) = 40,200 (SPEED LIMIT NORTH OF US ROUTE 30 = 30 MPH)

ADT (US ROUTE 30) = 18,600 (SPEED LIMIT = 35 MPH)

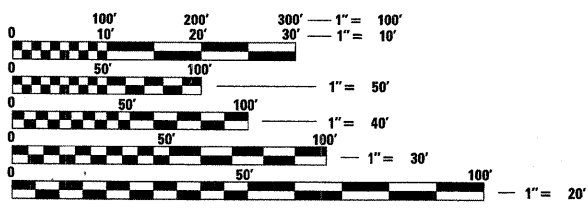
ADT (LOCKPORT ST) = 14,100 (SPEED LIMIT = 25 MPH)

PROJECT LOCATION

VILLAGE OF PLAINFIELD
WILL COUNTY

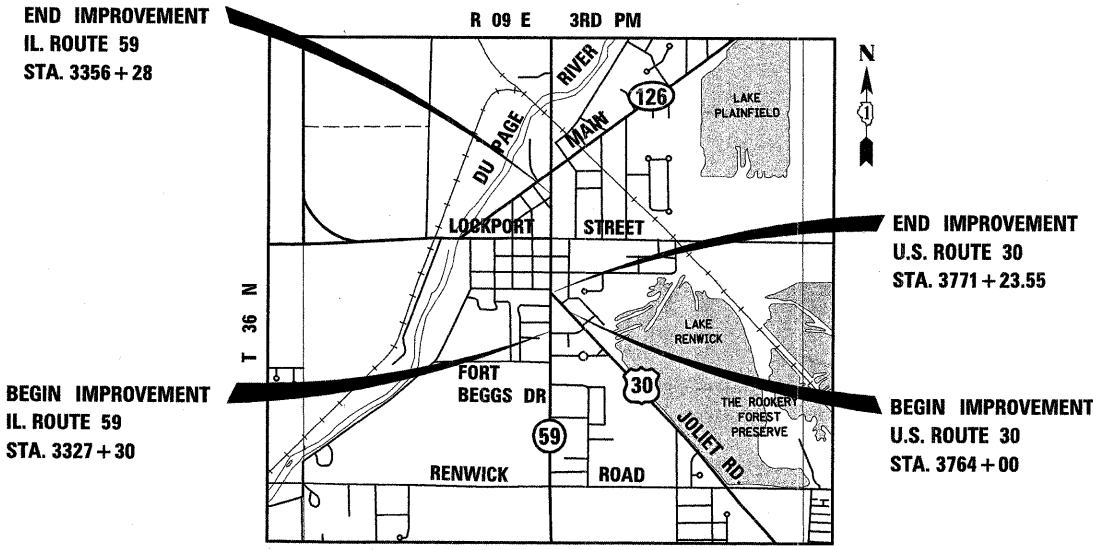
DESIGN DESIGNATION

3,925 (24) OTHER PRINCIPAL ARTERIAL 11.85 (PCC-20)



FULL SIZE PLANS HAVE BEEN PREPARED USING STANDARD ENGINEERING SCALES. REDUCED SIZED PLANS WILL NOT CONFORM TO STANDARD SCALES. IN MAKING MEASUREMENTS ON REDUCED PLANS, THE ABOVE SCALES MAY BE USED.

J.U.L.I.E.
JOINT UTILITY LOCATION INFORMATION FOR EXCAVATION
1-800-892-0123
OR 811



PLAINFIELD TOWNSHIP
LOCATION MAP
SCALE IN THOUSANDS OF FEET (APPROXIMATE)

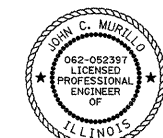
NET LENGTH OF PROJECT (IL ROUTE 59) = 2898 FEET = 0.55 MILES
GROSS LENGTH OF PROJECT (IL ROUTE 59) = 2898 FEET = 0.55 MILES

NET LENGTH OF PROJECT (US ROUTE 30) = 723 FEET = 0.14 MILES
GROSS LENGTH OF PROJECT (US ROUTE 30) = 723 FEET = 0.14 MILES

PROJECT ENGINEER - ALIX BRICE
(847) 705-4552

PROJECT MANAGER - RAJENDRA SHAH
(847) 705-4555

CONTRACT NO. 60E73



SIGNED: *John C. Murillo*
John C. Murillo, P.E. Il. Lic. No. 062-052397
Expires 11/30/2009

DATE: 1-16-09
EXCLUDES DRAWING NOS. 116 to 123 and 167 to 175



SIGNED: *John T. Beam*
John T. Beam P.E. Il. Lic. No. 62-033344
Expires 11/30/2009

DATE: 10-9-08
FOR LIGHTING DRAWING NOS. 167 to 175



SIGNED: *Steven M. Verseman*
Steven M. Verseman P.E. Il. Lic. No. 62-39372
Expires 11/30/2009

DATE: 10-9-08
FOR WATER MAIN DRAWING NOS. 116 to 123

STATE OF ILLINOIS
DEPARTMENT OF TRANSPORTATION
DIVISION OF HIGHWAYS

SUBMITTED: JANUARY 22, 20 09

Diane M. O'Keefe
DEPUTY DIRECTOR OF HIGHWAYS, REGION ENGINEER

March 27, 20 09
Charles J. Ingersoll
ENGINEER OF DESIGN AND ENVIRONMENT

March 27, 20 09
Christie M. Reed
DIRECTOR OF HIGHWAYS, CHIEF ENGINEER

**PRINTED BY THE AUTHORITY
OF THE STATE OF ILLINOIS**

Plans Prepared By:
KNIGHT
Engineers & Architects
221 North LaSalle Street
Suite 300
Chicago, IL 60601-1211
Phone: (312) 577-3300