

CH	SECTION	COUNTY	TOTAL SHEETS	SHEET NO.
92	2008-029 I	COOK	15	1
ILLINOIS		CONTRACT NO. 60E61		

STATE OF ILLINOIS
DEPARTMENT OF TRANSPORTATION
DIVISION OF HIGHWAYS

PROPOSED
HIGHWAY PLANS

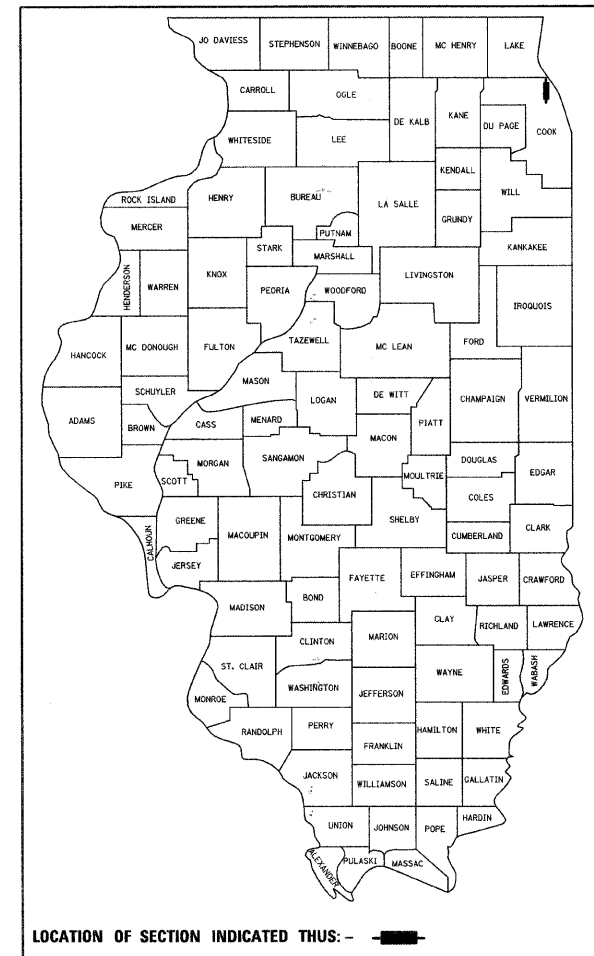
CH ROUTE 92 (FOREST WAY DRIVE)
SECTION: 2008-029 I
OVER EAST DIVERSION DITCH
WINGWALL REPAIR
COUNTY: COOK
C-91-495-08

FOR INDEX OF SHEETS, SEE SHEET NO. 2

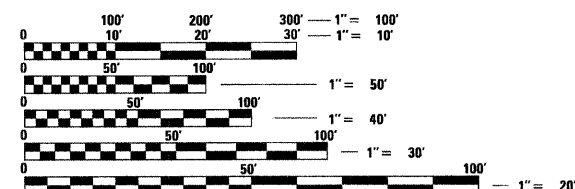
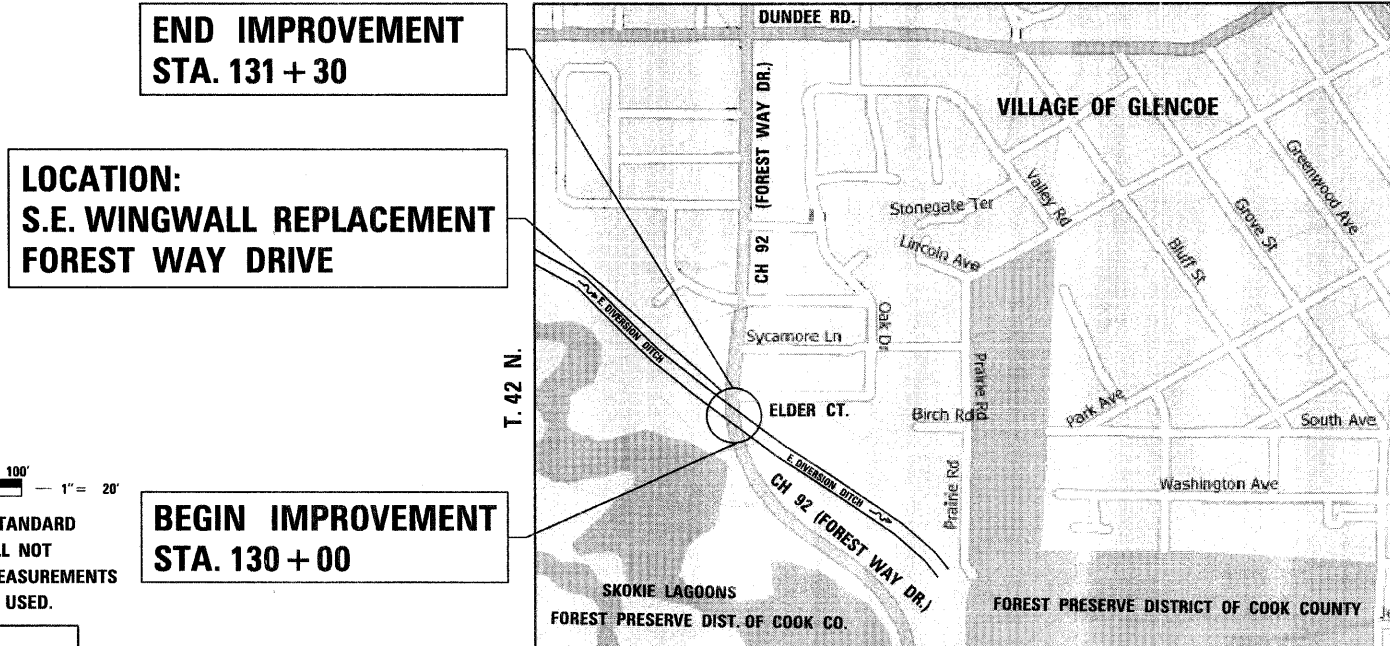
DESIGN DESIGNATION:
MINOR ARTERIAL
POSTED SPEED : 30 M.P.H.
2008 ADT = 2,300

MUNICIPALITY INVOLVED:
VILLAGE OF GLENCOE

D-91-495-08



NEW TRIER TOWNSHIP
R. 12 E.



FULL SIZE PLANS HAVE BEEN PREPARED USING STANDARD ENGINEERING SCALES. REDUCED SIZED PLANS WILL NOT CONFORM TO STANDARD SCALES. IN MAKING MEASUREMENTS ON REDUCED PLANS, THE ABOVE SCALES MAY BE USED.

J.U.L.I.E.
 JOINT UTILITY LOCATING INFORMATION FOR EXCAVATORS
 1-800-892-0123
 OR 811

DISTRICT ONE - DESIGN
PROJECT MANAGER
KEN ENG (847) 705-4247
CONTRACT NO. 60E61

GROSS LENGTH OF PROJECT = 130 FEET = 0.025 MILES
NET LENGTH OF PROJECT = 130 FEET = 0.025 MILES

STATE OF ILLINOIS
 DEPARTMENT OF TRANSPORTATION
 DIVISION OF HIGHWAYS

SUBMITTED JANUARY 23, 2009

Diane M. O'Keefe
 DEPUTY DIRECTOR OF HIGHWAYS, REGION ONE ENGINEER

March 27, 2009
Charles J. Ingersoll
 ENGINEER OF DESIGN AND ENVIRONMENT

March 27, 2009
Christine M. Reed
 DIRECTOR OF HIGHWAYS, CHIEF ENGINEER



Birinder S. Sachdeva January 21, 2009
 BIRINDER S. SACHDEVA, P.E. DATE
 EXPIRES: 11-30-2009

Bhadresh N. Shah JANUARY 21, 2009
 BHADRESH N. SHAH, S.E., P.E. DATE
 EXPIRES: 11-30-2010

CR & A
 CHRISTIAN-ROGE & ASSOCIATES, INC.
 ENGINEERS - PLANNERS - SURVEYORS
 211 W. WACKER DRIVE CHICAGO, IL. 60606
 TELEPHONE: 312-372-2023

PRINTED BY THE AUTHORITY
OF THE STATE OF ILLINOIS

INDEX OF SHEETS

1	COVER SHEET
2	INDEX OF SHEETS, LIST OF STATE STANDARDS AND GENERAL NOTES CH 92 (FOREST WAY DRIVE)
3	SUMMARY OF QUANTITIES CH 92 (FOREST WAY DRIVE)
4	TYPICAL SECTIONS AND DETAILS CH 92 (FOREST WAY DRIVE)
5	ALIGNMENT AND TIES CH 92 (FOREST WAY DRIVE)
6	EXISTING AND PROPOSED PLAN AND PROFILE CH 92 (FOREST WAY DRIVE)
7	SUGGESTED TRAFFIC CONTROL AND STAGING PLAN CH 92 (FOREST WAY DRIVE)
8	EROSION CONTROL AND GRADING PLAN CH 92 (FOREST WAY DRIVE)
9	WINGWALL PLAN AND ELEVATION
10	WINGWALL DETAILS
11	SOIL BORING LOGS
12 - 13	CROSS SECTIONS CH 92 (FOREST WAY DRIVE)
14	TRAFFIC CONTROL AND PROTECTION FOR SIDE ROADS, INTERSECTIONS AND DRIVEWAYS
15	ARTERIAL ROAD INFORMATION SIGN

LIST OF STATE STANDARDS

STANDARD NO.	DESCRIPTION
000001-05	STANDARD SYMBOLS, ABBREVIATIONS AND PATTERNS
630001-08	STEEL PLATE BEAM GUARDRAIL
635006-03	REFLECTOR AND TERMINAL MARKER PLACEMENT
635011-02	REFLECTOR AND MARKER AND MOUNTING DETAILS
701501-05	URBAN LANE CLOSURE, 2L, 2W, UNDIVIDED
701901-01	TRAFFIC CONTROL DEVICES
704001-05	TEMPORARY CONCRETE BARRIER

GENERAL NOTES

1. FORTY-EIGHT HOURS BEFORE STARTING EXCAVATION, THE CONTRACTOR WILL CALL J.U.L.I.E. (1-800-892-0123) OR 811 TO HAVE THE LOCATION OF EXISTING UTILITIES STAKED.
2. THE CONTRACTOR WILL NOT BE ALLOWED TO SET UP A YARD OR FIELD OFFICE ON STATE PROPERTY WITHOUT WRITTEN PERMISSION FROM THE DEPARTMENT.
3. SAW CUTTING PRIOR TO ANY REMOVAL ITEMS NOTED ON THE PLANS OR DIRECTED BY THE ENGINEER SHALL BE CONSIDERED INCLUDED IN THE CONTRACT UNIT PRICE FOR CONCRETE REMOVAL.
4. DO NOT SCALE PLANS FOR CONSTRUCTION DIMENSIONS.
5. THE CONTRACTOR SHALL USE CARE IN REMOVING OR EXCAVATING NEAR ALL EXISTING ITEMS WHICH WILL REMAIN. ANY DAMAGE DONE TO EXISTING ITEMS BY THE CONTRACTOR SHALL BE REPAIRED AT THE CONTRACTOR'S EXPENSE.
6. THE CONTRACTOR MUST PROTECT PAVEMENT WHEN DUMPING RIPRAP ONTO THE PAVEMENT AND WILL BE RESPONSIBLE FOR RESTORING PAVEMENT MARKINGS.
7. THE CONTRACTOR SHALL OBTAIN ALL NECESSARY PERMITS, AS REQUIRED, PRIOR TO COMMENCING WITH CONSTRUCTION.
8. THE CONTRACTOR SHALL TAKE ALL NECESSARY MEASURES TO ASSURE THAT NO DEBRIS FALLS IN THE CREEK. THE COST OF THIS WORK SHALL BE INCLUDED IN THE CONTRACT UNIT PRICE FOR CONCRETE REMOVAL.
9. THE CONTRACTOR SHALL CONTACT THE TRAFFIC CONTROL SUPERVISOR AT (847) 705-4470 A MINIMUM OF 72 HOURS PRIOR TO THE PLACEMENT OF ANY TEMPORARY TRAFFIC CONTROL DEVICES.
10. THE CONTRACTOR SHALL SUBMIT THEIR FINAL DE-WATERING AND SEDIMENT CONTROL PLANS FOR THE PROJECT PRIOR TO THE START OF WORK.
11. THE CONTRACTOR SHALL COORDINATE CONSTRUCTION ACTIVITIES WITH UTILITY COMPANIES.
12. THE EXISTING EARTH SHOULDER TO BE REMOVED AND THE EARTH EXCAVATION FOR THE PROPOSED RIP-RAP, ESTIMATES 12" DEPTH, SHALL BE PAID FOR AS REMOVAL AND DISPOSAL OF UNSUITABLE MATERIAL. THE COST OF CLEARING THE AREA WITHIN THE CONSTRUCTION LIMITS SHALL BE INCLUDED IN THE CONTRACT UNIT PRICE FOR REMOVAL AND DISPOSAL OF UNSUITABLE MATERIAL.

FILE NAME = 1024M_sht.Index.dgn
PLOT DATE = 1/23/2009



DESIGNED	S.J.P.	REVISED	-
DRAWN	A.Y.	REVISED	-
CHECKED	S.J.P.	REVISED	-
DATE	JANUARY 27, 2009	REVISED	-

**STATE OF ILLINOIS
DEPARTMENT OF TRANSPORTATION**

**INDEX OF SHEETS, LIST OF STATE STANDARDS
AND GENERAL NOTES CH 92 (FOREST WAY DRIVE)**

SCALE: NONE SHEET NO. 1 OF 1 SHEETS STA. 130+00 TO STA. 131+15

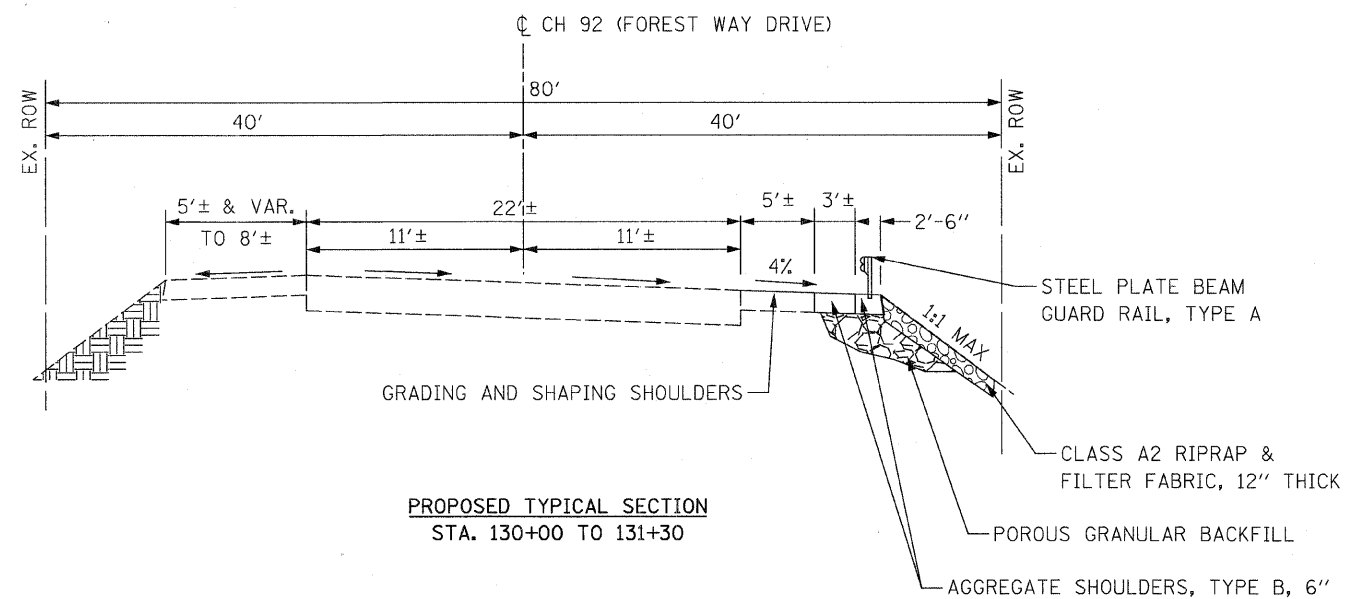
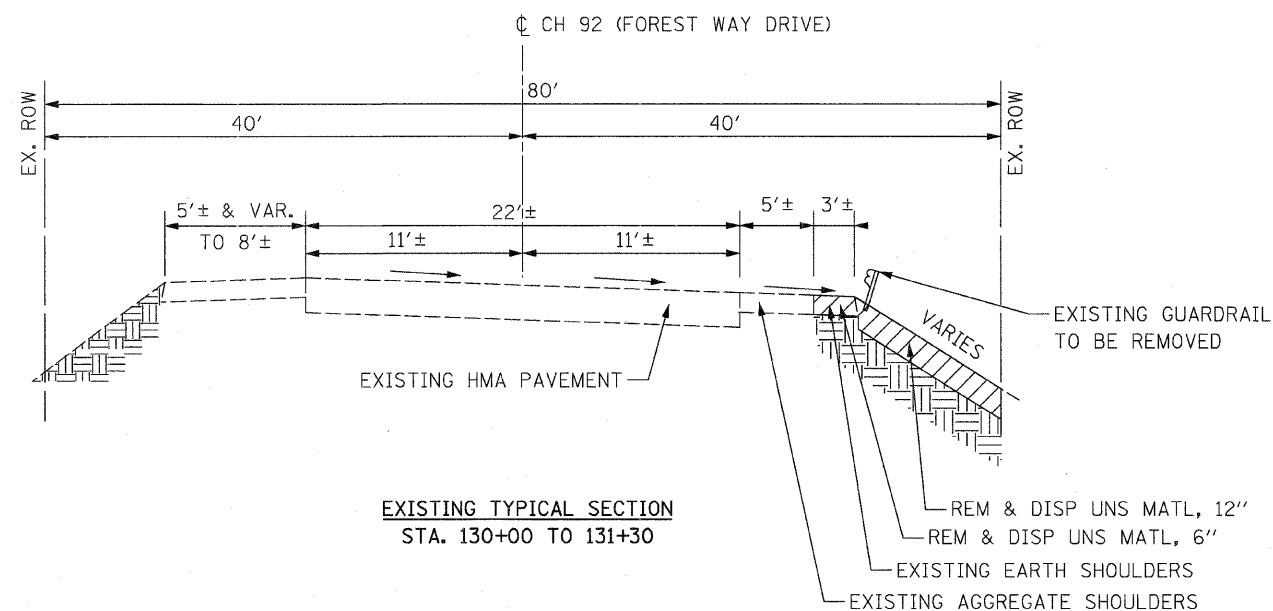
CH	SECTION	COUNTY	TOTAL SHEETS	SHEET NO.
92	2008-029 I	COOK	15	2
			CONTRACT NO. 60E61	

ILLINOIS FED. AID PROJECT

SUMMARY OF QUANTITIES			100% STATE	
CODE NO	ITEM	UNIT	TOTAL QUANTITIES	CONSTRUCTION TYPE CODE
				CH 92 SFTY-2A
20201006	GRADING AND SHAPING SHOULDERS	UNIT	1	1
20201200	REMOVAL AND DISPOSAL OF UNSUITABLE MATERIAL	CU YD	43	43
21101615	TOPSOIL FURNISH AND PLACE, 4"	SQ YD	28	28
25100635	HEAVY DUTY EROSION CONTROL BLANKET	SQ YD	28	28
28000400	PERIMETER EROSION BARRIER	FOOT	111	111
28100103	STONE RIPRAP, CLASS A2	SQ YD	40	40
28100105	STONE RIPRAP, CLASS A3	SQ YD	16	16
28200200	FILTER FABRIC	SQ YD	57	57
20900110	POROUS GRANULAR BACKFILL	CU YD	140	140
48101500	AGGREGATE SHOULDERS, TYPE B 6"	SQ YD	70	70
50102400	CONCRETE REMOVAL	CU YD	11	11
50200100	STRUCTURE EXCAVATION	CU YD	62	62
50300225	CONCRETE STRUCTURES	CU YD	12	12
50800205	REINFORCEMENT BARS, EPOXY COATED	POUND	1,660	1,660

SUMMARY OF QUANTITIES			100% STATE	
CODE NO	ITEM	UNIT	TOTAL QUANTITIES	CONSTRUCTION TYPE CODE
				CH 92 SFTY-2A
59100100	GEOCOMPOSITE WALL DRAIN	SQ YD	13	13
* 63000000	STEEL PLATE BEAM GUARD RAIL, TYPE A	FOOT	106	106
* 63100167	TRAFFIC BARRIER TERMINAL, TYPE 1 (SPECIAL) TANGENT	EACH	1	1
63200310	GUARDRAIL REMOVAL	FOOT	115	115
67100100	MOBILIZATION	L SUM	1	1
67000400	ENGINEER'S FIELD OFFICE, TYPE A	CAL MO	6	6
70101800	TRAFFIC CONTROL AND PROTECTION, (SPECIAL)	L SUM	1	1
70400100	TEMPORARY CONCRETE BARRIER	FOOT	100	100
* 78200410	GUARDRAIL MARKERS, TYPE A	EACH	3	3
* 78201000	TERMINAL MARKER - DIRECT APPLIED	EACH	1	1
X0321781	MECHANICAL SPLICE	EACH	8	8
X0322256	TEMPORARY INFORMATION SIGNING	SQ FT	52	52
X5020501	UNDERWATER STRUCTURE EXCAVATION PROTECTION - LOCATION 1	EACH	1	1
Z0030240	IMPACT ATTENUATORS, TEMPORARY (NON-REDIRECTIVE), TEST LEVEL 2	EACH	2	2

* SPECIALTY ITEM



FILE NAME = 1024M_sht_TYP.dgn
PLOT DATE = 1/23/2009

CR
CHRISTIAN-ROGE & ASSOCIATES, INC.
ENGINEERS-PLANNERS-SURVEYORS
211 WEST WACKER DRIVE
CHICAGO, ILLINOIS 60606
PHONE: (312)372-2023 FAX: (312)372-5274

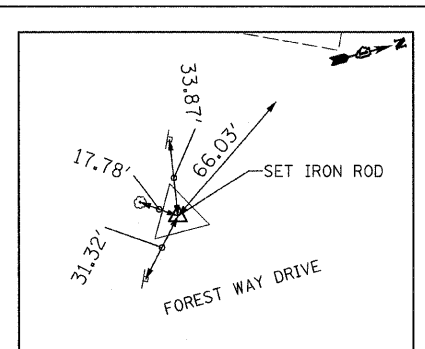
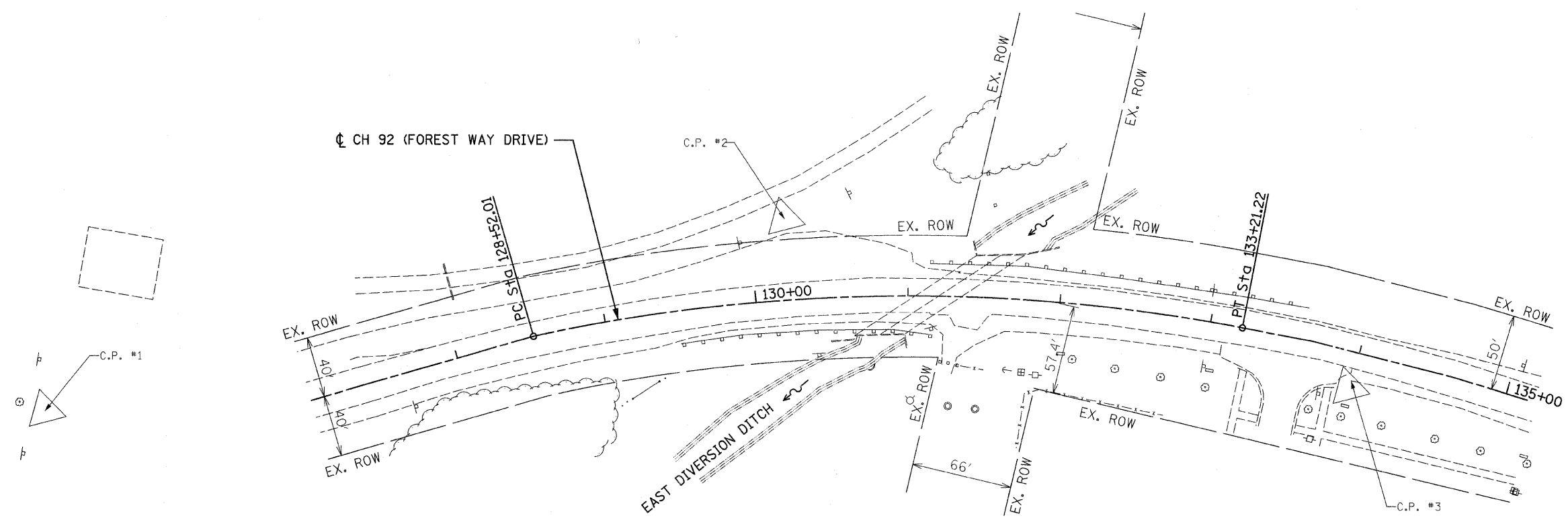
DESIGNED - S.J.P.	REVISED -
DRAWN - A.Y.	REVISED -
CHECKED - S.J.P.	REVISED -
DATE - JANUARY 27, 2009	REVISED -

STATE OF ILLINOIS
DEPARTMENT OF TRANSPORTATION

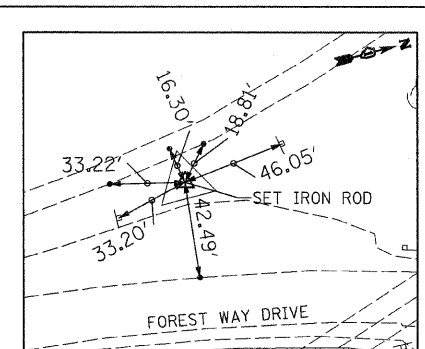
TYPICAL SECTIONS & DETAILS
CH 92 (FOREST WAY DRIVE)

SCALE: SHEET NO. 1 OF 1 SHEETS STA. 130+00 TO STA. 131+15

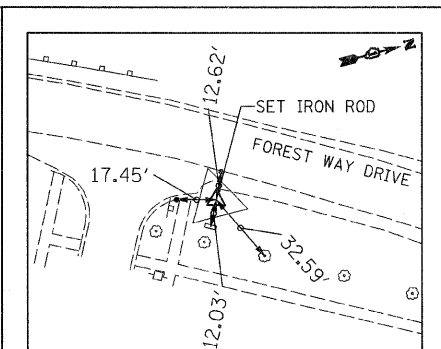
CH	SECTION	COUNTY	TOTAL SHEETS	SHEET NO.
92	2008-029 I	COOK	15	4
CONTRACT NO. 60E61				
ILLINOIS FED. AID PROJECT				



C.P. #1
 SET 5/8" IRON ROD
 STA. 125+30.09, 42.00' LT.
 N = 5,000.0000
 E = 5,000.0000
 ELEV. = 633.04



C.P. #2
 SET 5/8" IRON ROD
 STA. 130+22.30, 53.60' LT.
 N = 5,501.9200
 E = 5,000.0000
 ELEV. = 632.48



C.P. #3
 SET 5/8" IRON ROD
 STA. 133+98.75, 23.70' RT.
 N = 5,832.9464
 E = 5,201.1024
 ELEV. = 630.79

CENTERLINE ALIGNMENT			
	NORTHING	EASTING	STATION
P. O. T.	5, 208. 9523	5, 036. 5212	127+38. 00
P. C.	5, 322. 9234	5, 033. 5270	128+52. 01
P. I.	5, 557. 9541	5, 067. 1449	128+89. 92
P. T.	5, 775. 2292	5, 145. 4914	133+21. 22
P. O. T.	5, 817. 4698	5, 165. 4367	133+67. 93
P. O. T.	5, 900. 9790	5, 211. 6800	134+63. 39
P. O. T.	5, 946. 3508	5, 239. 4105	135+16. 56

FOREST WAY DRIVE CURVE DATA	
PI STA.	= 130+89.92
Δ	= 23° 22' 37" (RT)
D	= 4" 58' 56"
R	= 1,150.00'
T	= 237.91'
L	= 469.21'
E	= 24.35'
e	= -----
T.R.	= -----
S.E. RUN	= -----
P.C. STA.	= 128+52.01
P.T. STA.	= 133+21.22

FILE NAME = 1024M_sht_Align.dgn
 PLOT DATE = 1/23/2009

CHRISTIAN-ROGE & ASSOCIATES, INC.
 ENGINEERS-PLANNERS-SURVEYORS
 211 WEST WACKER DRIVE
 CHICAGO, ILLINOIS 60606
 PHONE: (312)372-2023 FAX: (312)372-5274

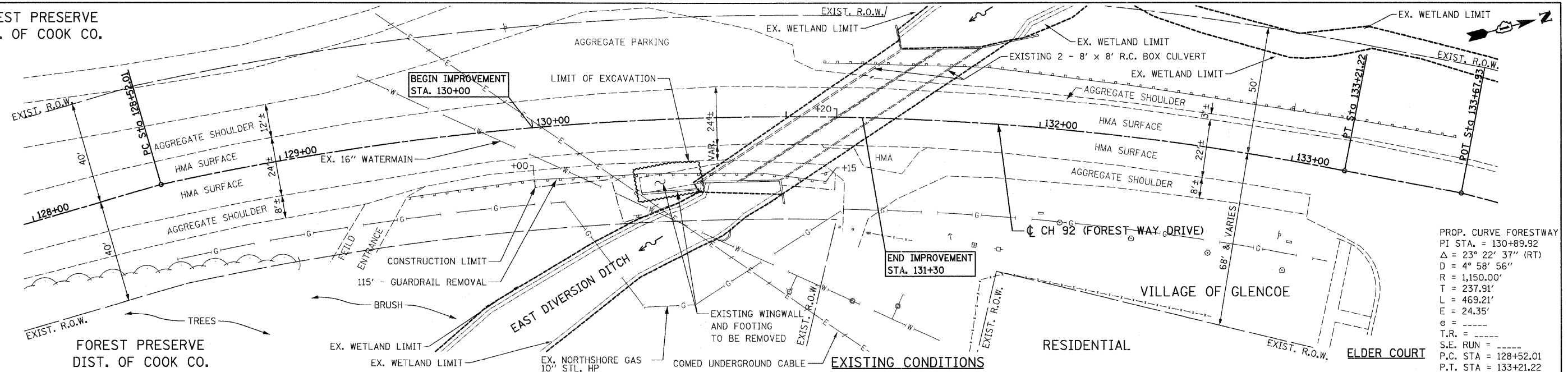
DESIGNED - S.J.P.	REVISED -
DRAWN - A.Y.	REVISED -
CHECKED - S.J.P.	REVISED -
DATE - JANUARY 27, 2009	REVISED -

STATE OF ILLINOIS
DEPARTMENT OF TRANSPORTATION

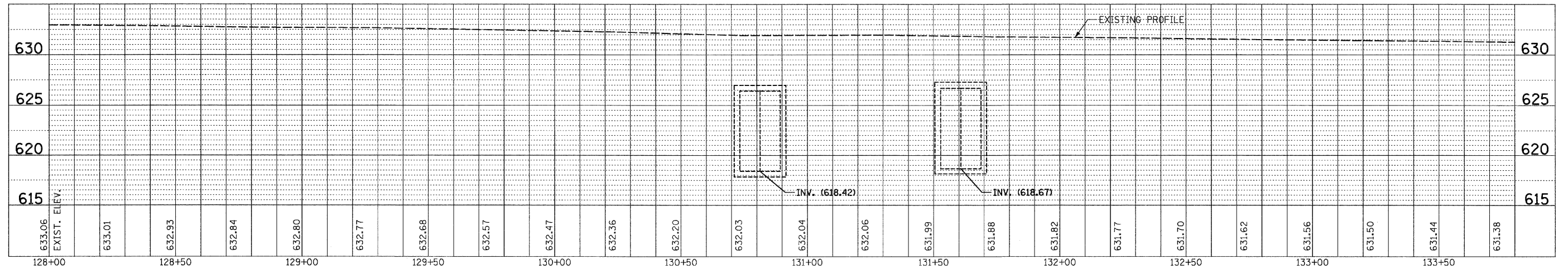
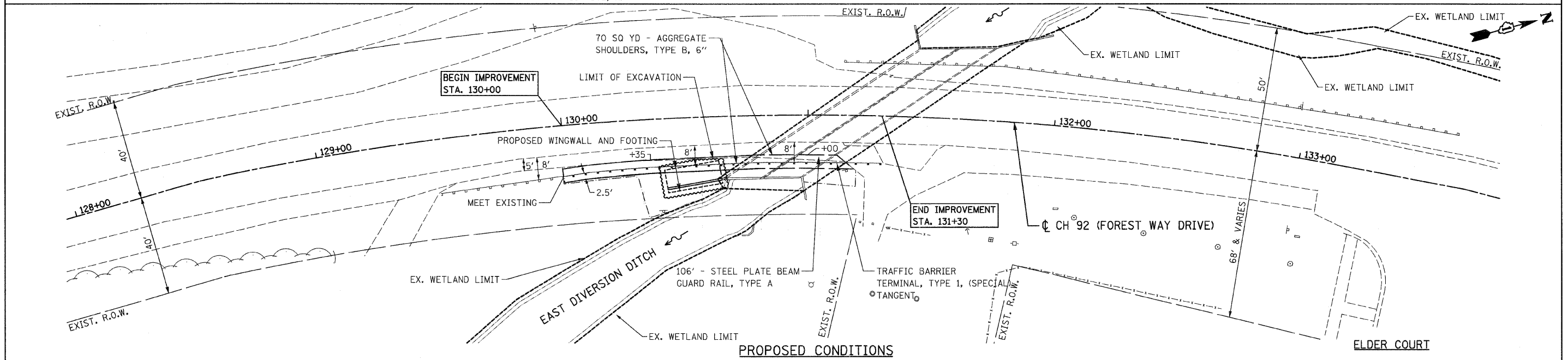
ALIGNMENT AND TIES
CH 92 (FOREST WAY DRIVE)
 SCALE: 1" = 40' SHEET NO. 1 OF 1 SHEETS STA. 130+00 TO STA. 131+15

CH	SECTION	COUNTY	TOTAL SHEETS	SHEET NO.
92	2008-029 I	COOK	15	5
CONTRACT NO. 60E61				
ILLINOIS FED. AID PROJECT				

FOREST PRESERVE
DIST. OF COOK CO.



PROP. CURVE FORESTWAY
PI STA. = 130+89.92
Δ = 23° 22' 37" (RT)
D = 4° 58' 56"
R = 1,150.00'
T = 237.91'
L = 469.21'
E = 24.35'
e = -----
T.R. = -----
S.E. RUN = -----
P.C. STA = 128+52.01
P.T. STA = 133+21.22



FILE NAME = 1024M_sht_PP_28.dgn
PLOT DATE = 1/26/2009



CHRISTIAN-ROGE & ASSOCIATES, INC.
ENGINEERS-PLANNERS-SURVEYORS
211 WEST WACKER DRIVE
CHICAGO, ILLINOIS 60606
PHONE: (312)372-2023 FAX: (312)372-5274

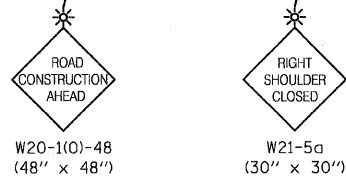
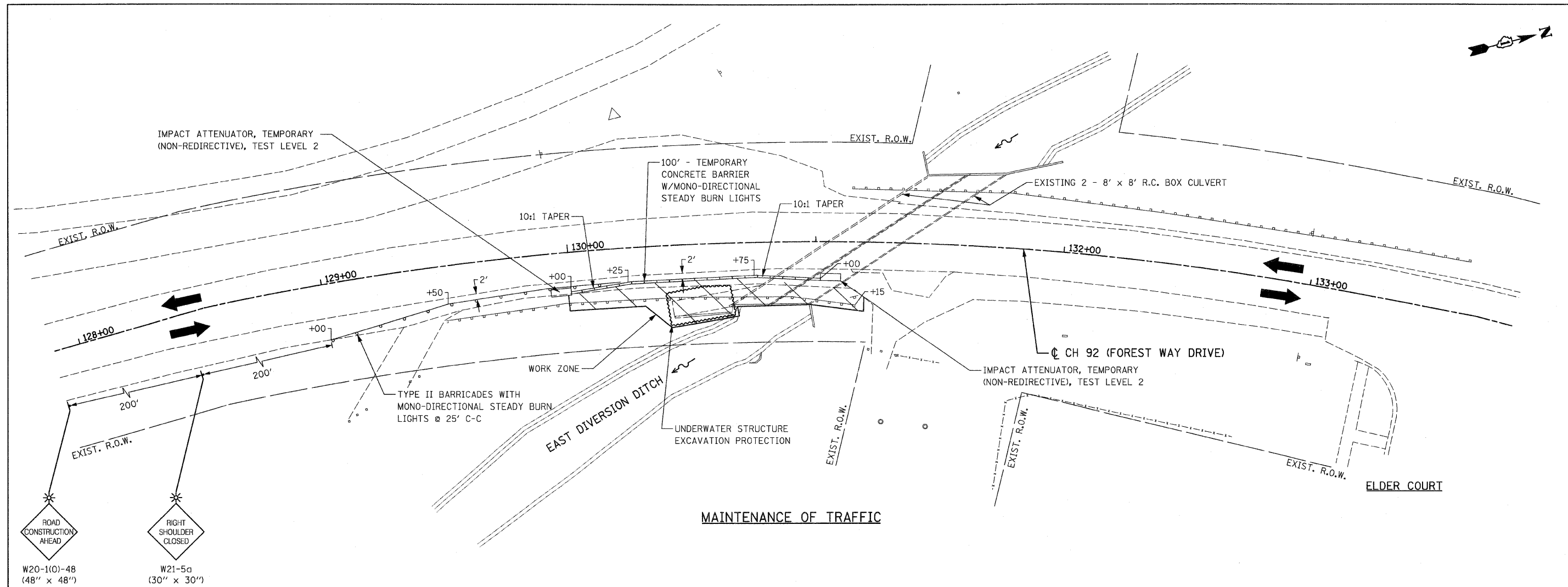
DESIGNED - S.J.P.	REVISED -
DRAWN - A.Y.	REVISED -
CHECKED - S.J.P.	REVISED -
DATE - JANUARY 27, 2009	REVISED -

STATE OF ILLINOIS
DEPARTMENT OF TRANSPORTATION

EXISTING & PROPOSED PLAN AND PROFILE
CH 92 (FOREST WAY DRIVE)

SCALE: 1" = 20' SHEET NO. 1 OF 1 SHEETS STA. 130+00 TO STA. 131+15

CH	SECTION	COUNTY	TOTAL SHEETS	SHEET NO.
92	2008-029 I	COOK	15	6
CONTRACT NO. 60E61				
ILLINOIS FED. AID PROJECT				



MAINTENANCE OF TRAFFIC

SUGGESTED STAGING AND MAINTENANCE OF TRAFFIC

CONSTRUCTION STAGING

PRE-STAGE

- INSTALL UNDERWATER STRUCTURE EXCAVATION PROTECTION.

WINGWALL RE-CONSTRUCTION

- REMOVE EXISTING GUARDRAIL, RECONSTRUCT WINGWALL, BACKFILL EXCAVATION AND PLACE RIPRAP.

SHOULDER WORK

- PLACE AGGREGATE SHOULDER AND INSTALL GUARDRAIL.

MAINTENANCE OF TRAFFIC

PRE-STAGE

- USE DAILY LANE CLOSURES AS SHOWN ON IDOT STANDARD 701501, URBAN LANE CLOSURE, 2L, 2W, UNDIVIDED, TO PLACE TEMPORARY CONCRETE BARRIER AND TEMPORARY IMPACT ATTENUATORS.

WINGWALL RE-CONSTRUCTION

- USE DAILY LANE CLOSURES AS SHOWN ON IDOT STANDARD 701501, URBAN LANE CLOSURE, 2L, 2W, UNDIVIDED, DURING CONSTRUCTION ACTIVITIES IN THE WORK ZONE.

SHOULDER WORK

- REMOVE THE CONCRETE BARRIER IMMEDIATELY PRIOR TO PLACING THE AGGREGATE SHOULDER AND GUARDRAIL.
 - MAINTAIN THE SHOULDER CLOSURE USING TYPE II BARRICADES W/ MONO-DIRECTIONAL STEADY BURN LIGHTS @ 25' C-C.
 - USE DAILY LANE CLOSURES AS SHOWN ON IDOT STANDARD 701501, URBAN LANE CLOSURE, 2L, 2W, UNDIVIDED, DURING ACTIVITIES IN THE WORK ZONE.

TRAFFIC CONTROL GENERAL NOTES

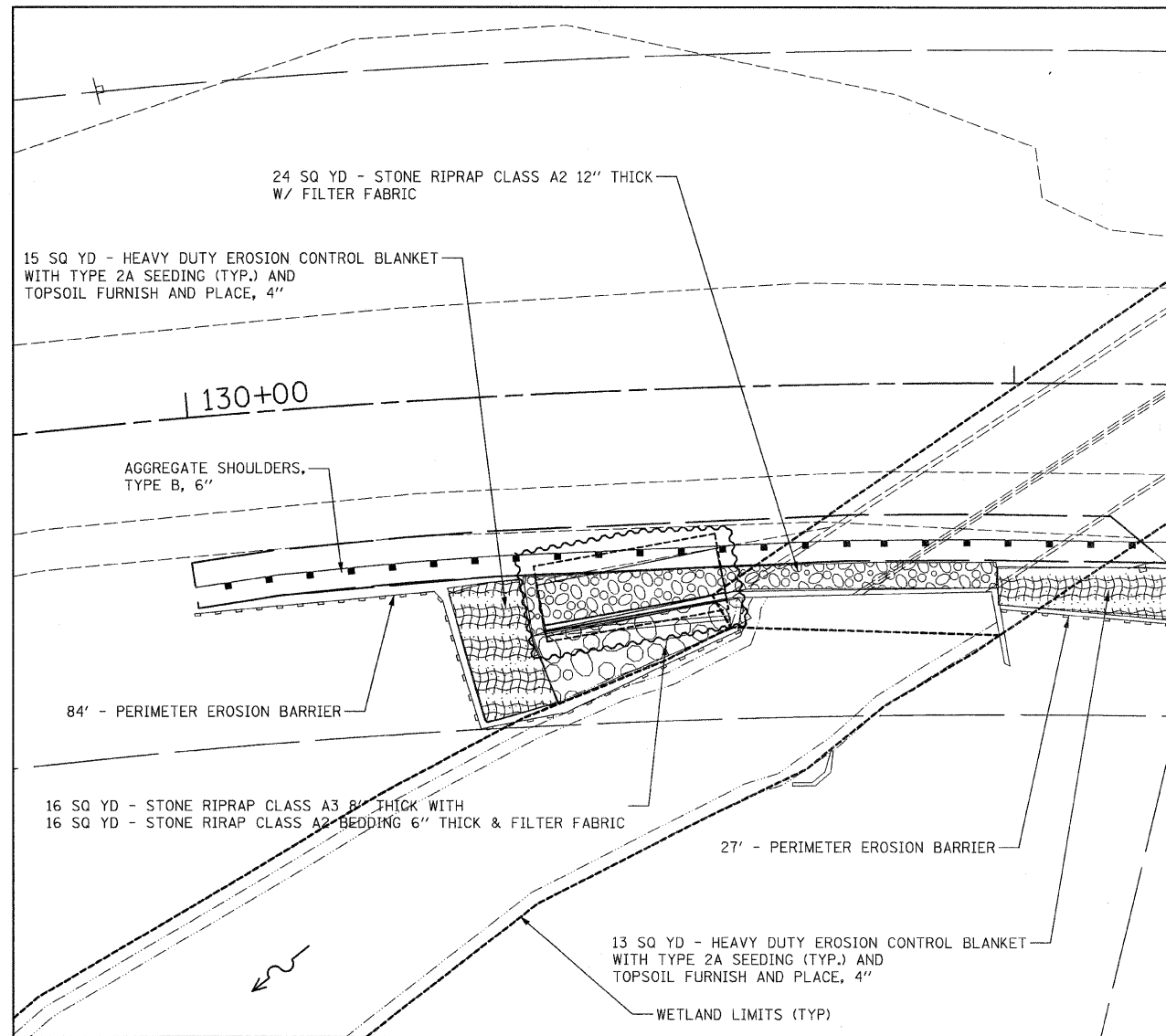
1. CONTRACTOR SHALL NOT MOUNT SIGNS ON EXISTING SIGNS.
2. CONTRACTOR SHALL MAINTAIN SATISFACTORY INGRESS AND EGRESS TO ADJACENT PROPERTIES THROUGHOUT THE CONSTRUCTION.

FILE NAME = 1024M_sht_MOT.dgn PLOT DATE = 1/23/2009	CHRISTIAN-ROGE & ASSOCIATES, INC. ENGINEERS-PLANNERS-SURVEYORS 211 WEST WACKER DRIVE CHICAGO, ILLINOIS 60606 PHONE: (312)372-2023 FAX: (312)372-5274	DESIGNED - S.J.P. DRAWN - A.Y. CHECKED - S.J.P. DATE - JANUARY 27, 2009	REVISED - REVISED - REVISED - REVISED -	STATE OF ILLINOIS DEPARTMENT OF TRANSPORTATION	SUGGESTED TRAFFIC CONTROL AND STAGING PLAN CH 92 (FOREST WAY DRIVE) SCALE: 1" = 20' SHEET NO. 1 OF 1 SHEETS STA. 130+00 TO STA. 131+15	CH 92 SECTION 2008-029 I COUNTY COOK TOTAL SHEETS 15 SHEET NO. 7 CONTRACT NO. 60E61 ILLINOIS FED. AID PROJECT
--	---	--	--	---	--	---

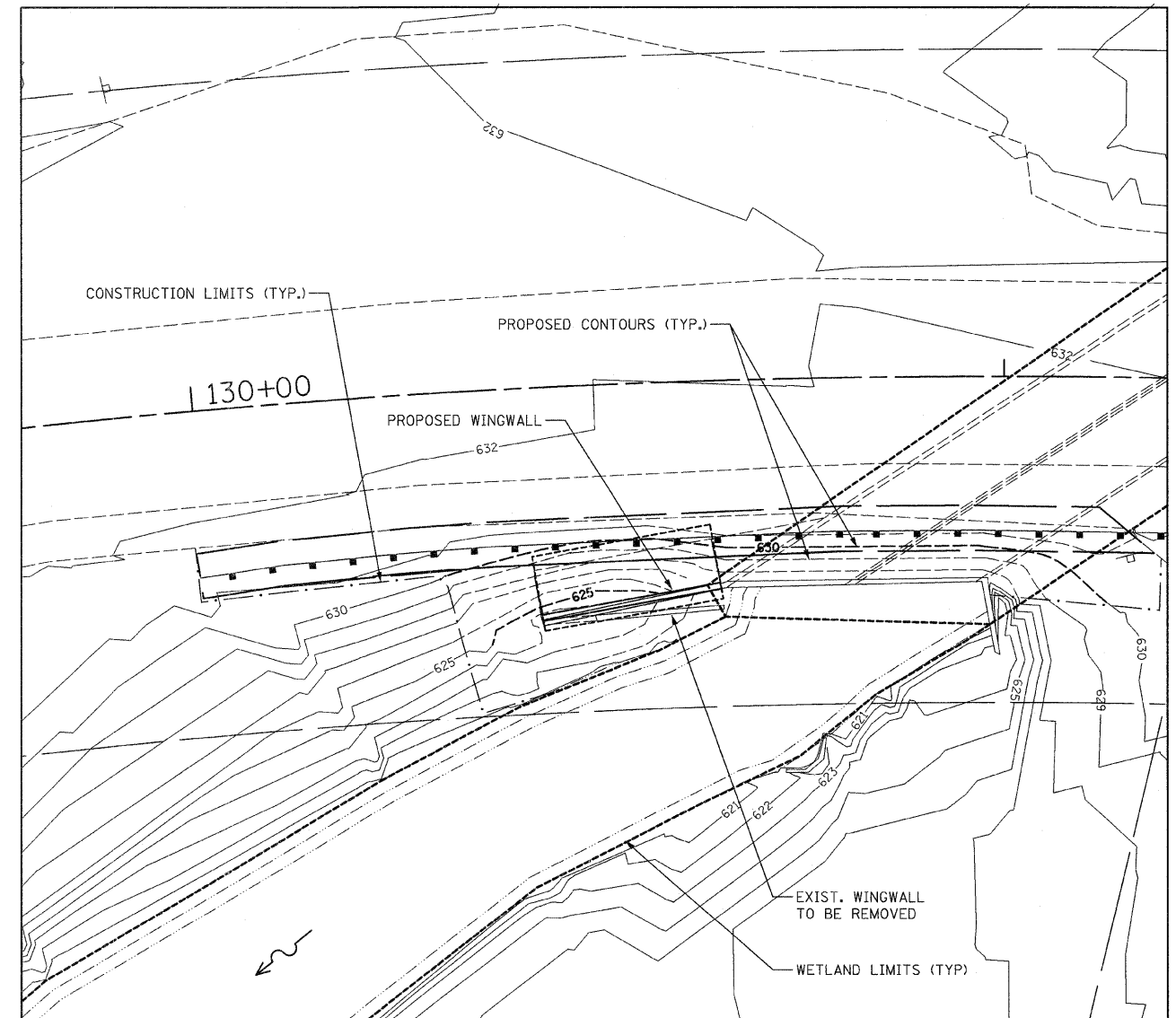
EROSION CONTROL PLAN

1. THE CONTRACTOR SHALL USE A SILT CURTAIN WHEN EXCAVATING IN OR NEAR THE WATER.
2. ALL PUMPING FROM DE-WATERING SHALL BE FILTERED THROUGH A PORTABLE SEDIMENT TANK OR BAG PRIOR TO OUTLETING INTO THE DITCH.
3. THE TEMPORARY EROSION CONTROL SYSTEMS SHALL BE REMOVED AS DIRECTED BY THE ENGINEER AFTER IT IS LONGER NEEDED.
4. EARTH STOCKPILES SHALL NOT BE ALLOWED WITHIN THE CONSTRUCTION SITE.

5. SEEDING CLASS 2 AND FERTILIZER SHALL BE PLACED ON ALL DISTURBED AREAS IN ACCORDANCE WITH SECTION 250.
THE COST OF SEEDING AND FERTILIZER SHALL BE INCLUDED IN THE UNIT PRICE FOR HEAVY-DUTY EROSION CONTROL BLANKET.



EROSION CONTROL PLAN



GRADING PLAN

FILE NAME = 1024M_sht_GR.10.dgn
PLOT DATE = 1/26/2009

CHRISTIAN-ROGE & ASSOCIATES, INC.
ENGINEERS-PLANNERS-SURVEYORS
211 WEST WACKER DRIVE
CHICAGO, ILLINOIS 60606
PHONE: (312)372-2023 FAX: (312)372-5274

DESIGNED - S.J.P.	REVISED -
DRAWN - A.Y.	REVISED -
CHECKED - S.J.P.	REVISED -
DATE - JANUARY 27, 2009	REVISED -

STATE OF ILLINOIS
DEPARTMENT OF TRANSPORTATION

EROSION CONTROL AND GRADING PLAN
CH 92 (FOREST WAY DRIVE)

SCALE: 1" = 10' SHEET NO. 1 OF 1 SHEETS STA. 130+00 TO STA. 131+15

CH	SECTION	COUNTY	TOTAL SHEETS	SHEET NO.
92	2008-029 I	COOK	15	8
CONTRACT NO. 60E61				
ILLINOIS FED. AID PROJECT				

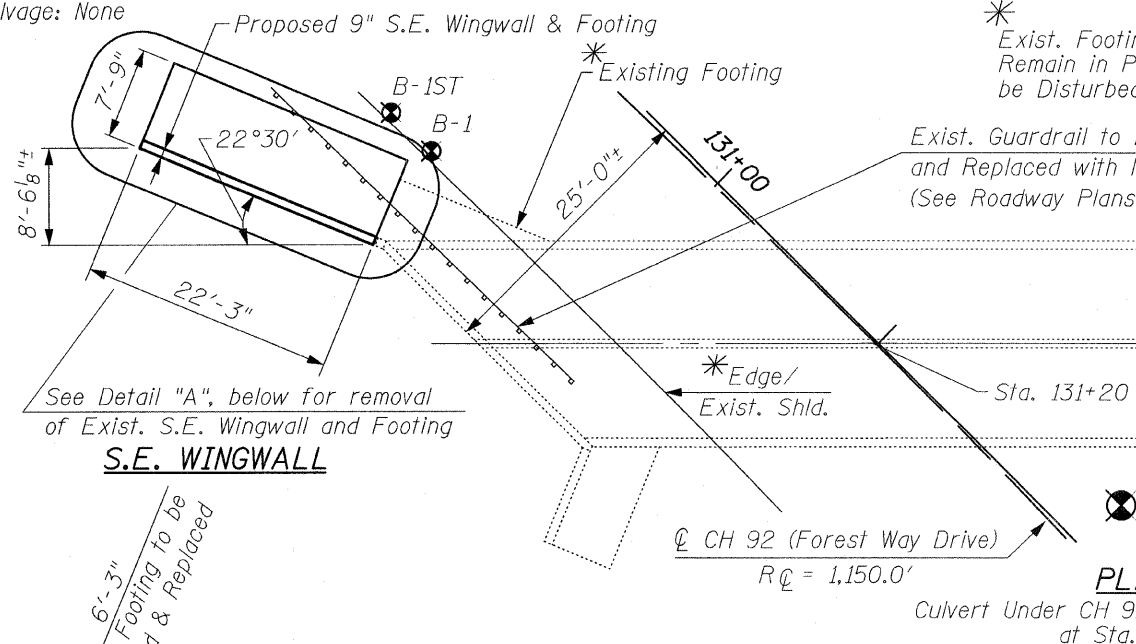
BENCH MARK:

CP #2, 5/8" ϕ Iron Rod Found at Sta. 130+22.30, 53.60' Lt., Elev. 632.48

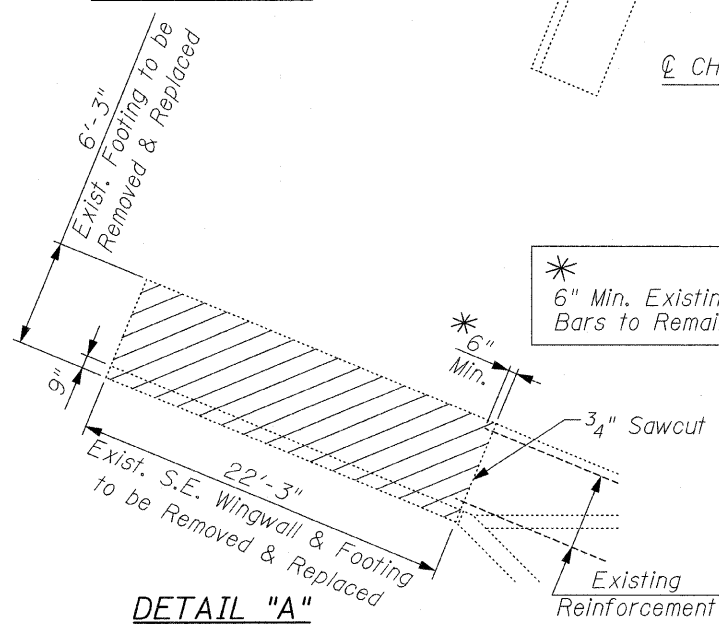
EXISTING STRUCTURE:

22'-3" Long C.I.P. L-Shaped Wingwall For Culvert under CH 92 (Forest Way Drive).

Salvage: None



See Detail "A", below for removal of Exist. S.E. Wingwall and Footing



NOTE:

The Contractor must not Disturb the Soil Under the Footing During Concrete Removal

LEGEND:

Concrete Removal

MIN. BAR LAP
#5 Bars = 2'-2"

LEGEND:

B.F. = Back Face
E.F. = Each Face

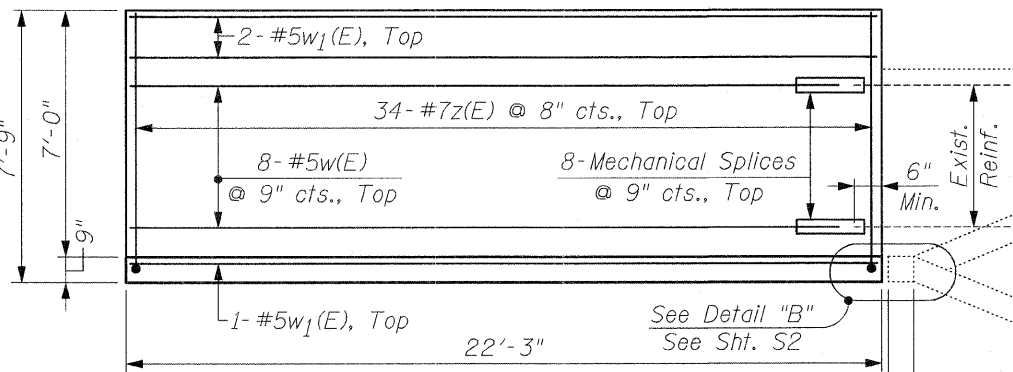
DESIGN STRESSES

FIELD UNITS

$f_y = 60,000$ psi
 $f'_c = 3,500$ psi

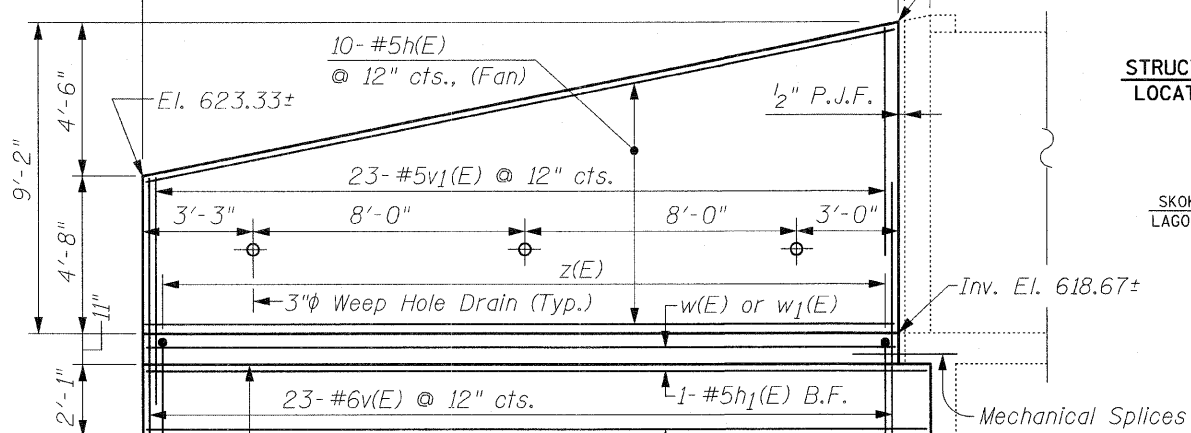
DESIGN SPECIFICATIONS

AASHTO 17th Edition-2002



PLAN

(Cast-In-Place Concrete Cantilever Wingwall)



ELEVATION
S.E. WINGWALL

GENERAL NOTES:

Plan Dimensions and Details relative to Existing Plans are subject to nominal Construction variations. The Contractor shall field verify Existing Dimensions and Details affecting New Construction and make necessary approved adjustments prior to Construction or ordering of Materials. Such variations shall not be cause for additional compensation for a change in the scope of the work, however, the Contractor will be paid for the quantity actually furnished based upon the unit price bid for the work.

All Exposed Concrete Edges shall be Chamfered 3/4", Unless Otherwise Noted.

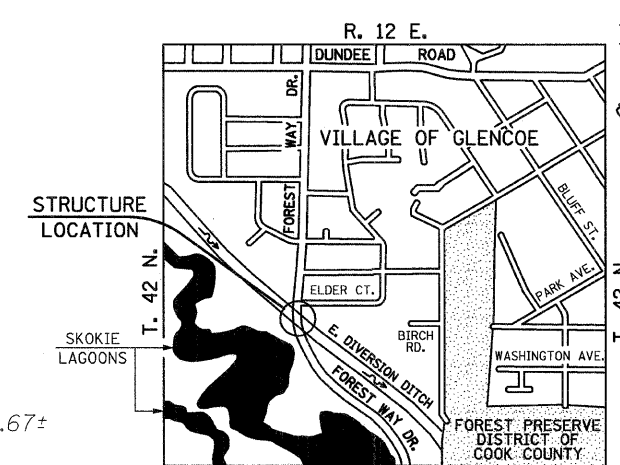
For Soil Boring Logs, See Sht. S3.

Reinforcement Bars shall conform to the Requirements of ASTM A 706, Grade 60. See Special Provisions.

Reinforcement Bars designated (E) shall be Epoxy Coated.

BILL OF MATERIAL

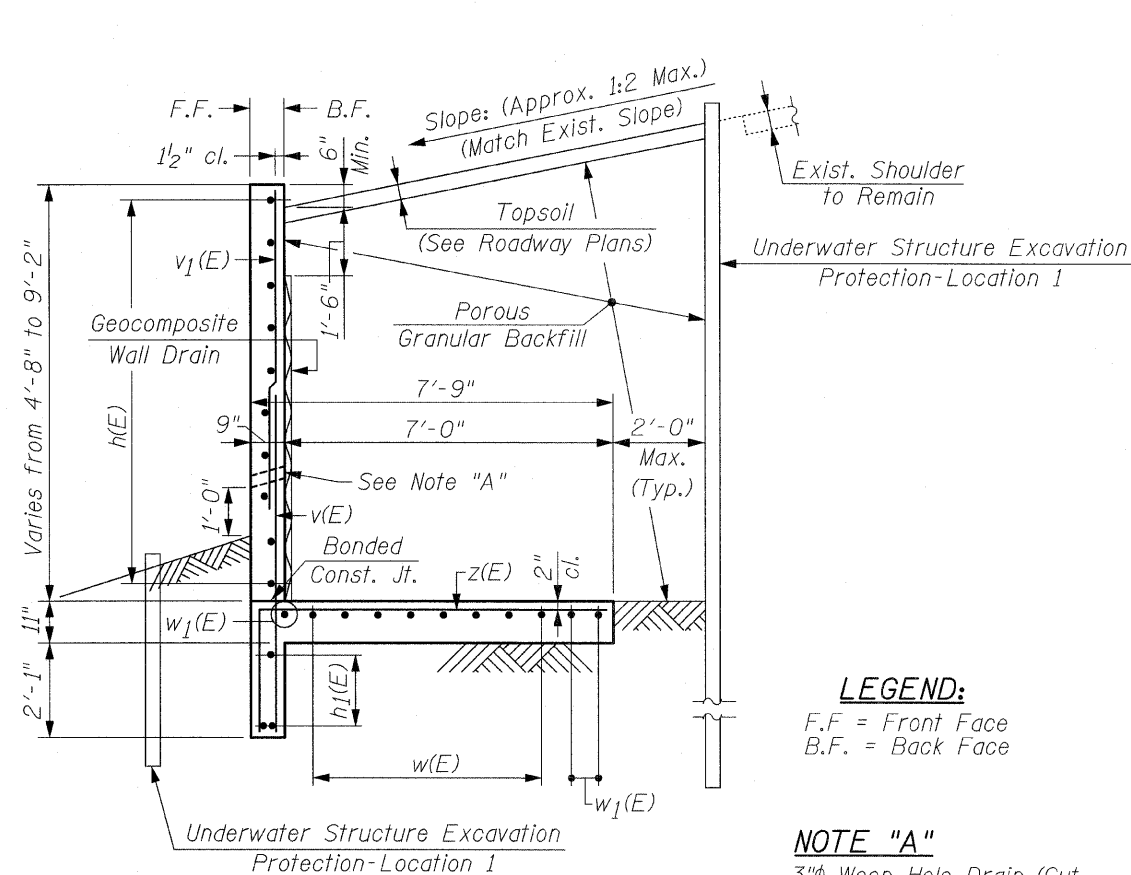
Bar	No.	Size	Length	Shape
h(E)	10	#5	21'-11"	—
h1(E)	3	#5	22'-8"	—
v(E)	23	#6	7'-4"	—
v1(E)	23	#5	6'-8"	—
w(E)	8	#5	21'-5"	—
w1(E)	3	#5	21'-11"	—
z(E)	34	#7	10'-1"	└
Concrete Structures		Cu. Yd.	11.6	
Structure Excavation		Cu. Yd.	62	
Reinforcement Bars, Epoxy Coated		Pound	1,660	
Concrete Removal		Cu. Yd.	10.5	
Porous Granular Backfill		Cu. Yd.	52	
Underwater Structure Excavation Protection-Location 1		Each	1	
Geocomposite Wall Drain		Sq. Yd.	13	
Mechanical Splice		Each	8	



LOCATION SKETCH

CR & A
CHRISTIAN-ROGE & ASSOCIATES, INC.
ENGINEERS / PLANNERS / SURVEYORS
211 W. WACKER DRIVE CHICAGO, IL 60606
PHONE: (312)372-2023 FAX: (312)372-5274

FILE NAME = plan_sections.dgn	USER NAME = IDOT	DESIGNED - B.N.S.	REVISED -	STATE OF ILLINOIS DEPARTMENT OF TRANSPORTATION	WINGWALL PLAN & ELEVATION CH 92 (FOREST WAY DRIVE)	CH 92	SECTION 2008-029 I	COUNTY COOK	TOTAL SHEETS 14	SHEET NO. 9	
PLOT SCALE = 50.0000' / IN.	DRAWN - R.E.S./F.M.	CHECKED - B.N.S./J.C.N.	REVISED -			CONTRACT NO. 60E61					
PLOT DATE = 1/30/2009	DATE - JANUARY 27, 2009	REVISED -	REVISED -			ILLINOIS FED. AID PROJECT					
SCALE: SHEET NO. S1 OF S3 SHEETS STA. TO STA.											



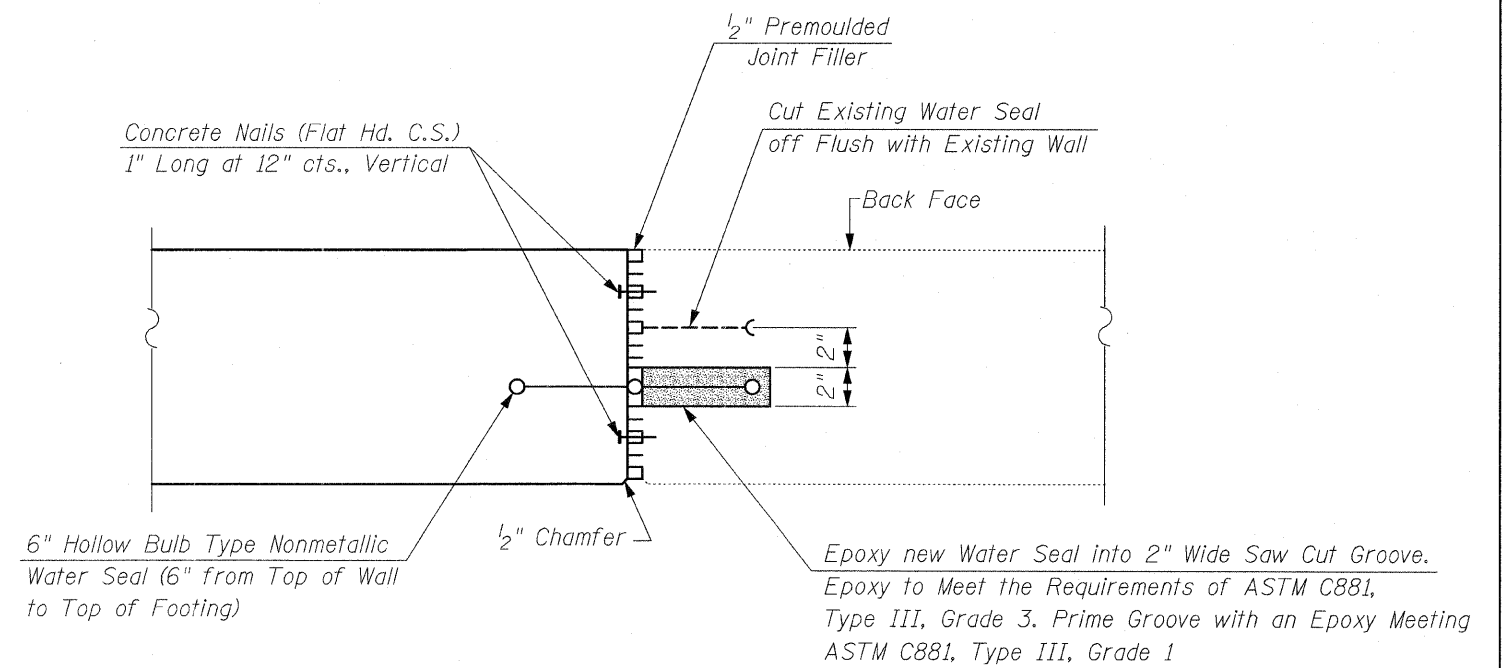
SECTION A-A
Max. Soil Pressure under footing = 2,600 psf

LEGEND:

F.F. = Front Face
B.F. = Back Face

NOTE "A"

3"φ Weep Hole Drain (Cut Impervious Side of Geocomposite Wall Drain to Ensure Flow)



DETAIL "B"
Cost Included with Concrete Structures

NOTE:

Work this Sheet With Sheet S1

FILE NAME = section_details.dgn	USER NAME = IDOT	DESIGNED - B.N.S.	REVISED -
		DRAWN - R.E.S./F.M.	REVISED -
		CHECKED - B.N.S./J.C.N.	REVISED -
		DATE - JANUARY 27, 2009	REVISED -

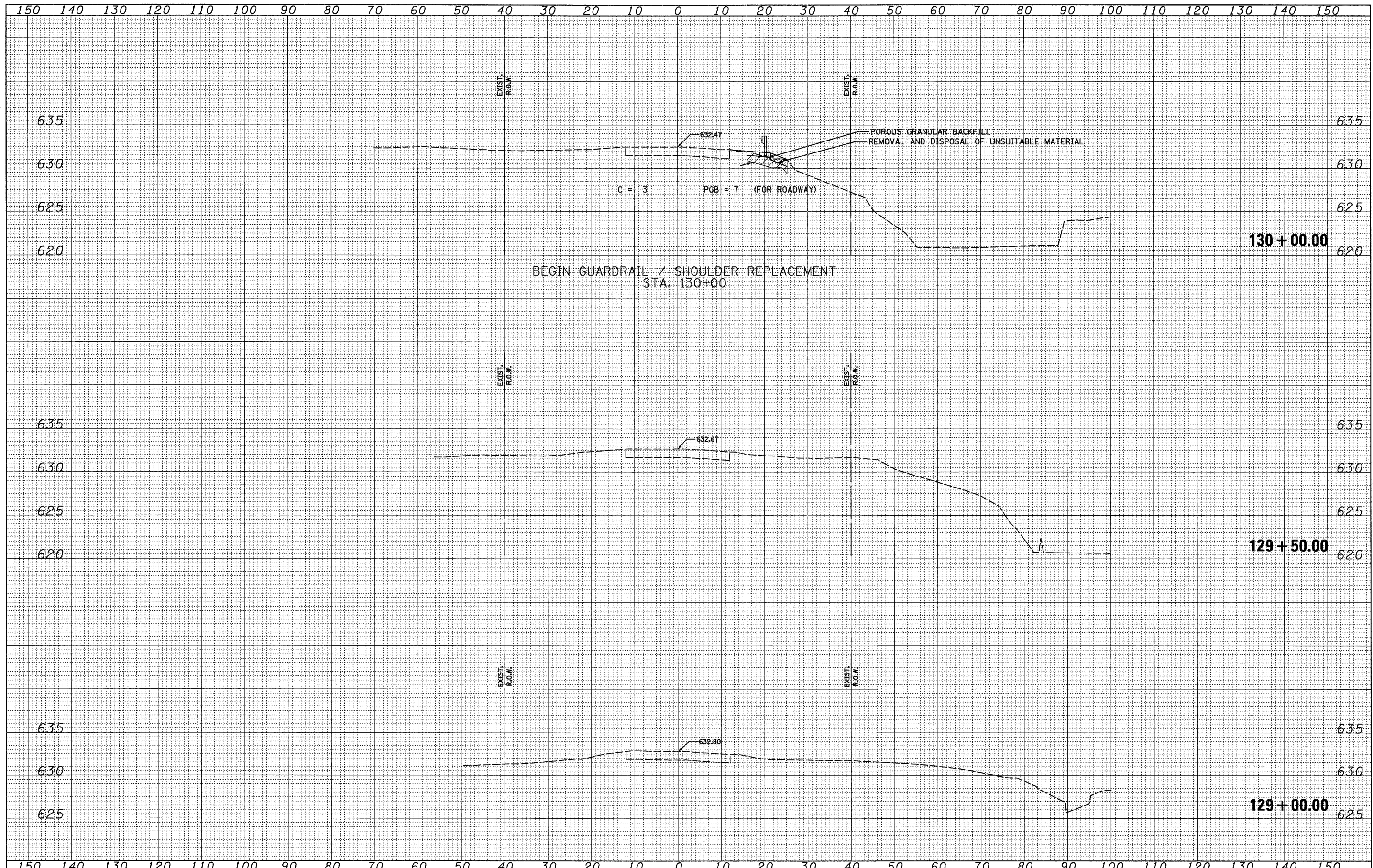
STATE OF ILLINOIS
DEPARTMENT OF TRANSPORTATION

WINGWALL DETAILS CH 92 (FOREST WAY DRIVE)		CH	SECTION	COUNTY	TOTAL SHEETS	SHEET NO.
SCALE:	SHEET NO. S2 OF S3 SHEETS	92	2008-029 I	COOK	14	10
STA.	TO STA.	FED. ROAD DIST. NO. ILLINOIS FED. AID PROJECT				



CHRISTIAN-ROGE & ASSOCIATES, INC.
ENGINEERS / PLANNERS / SURVEYORS
211 W. WACKER DRIVE CHICAGO, IL. 60606
PHONE: (312)372-2023 FAX: (312)372-5274

CONTRACT NO. 60E61



DATE	
BY	
DESIGNED	
DRAWN	
CHECKED	
DATE	
REVISIONS	
NO.	

DATE	
BY	
DESIGNED	
DRAWN	
CHECKED	
DATE	
REVISIONS	
NO.	

FILE NAME = 1824M_sht.X5.dgn
 PLOT DATE = 1/30/2009

CHRISTIAN ROGE & ASSOCIATES, INC.
 ENGINEERS-PLANNERS-SURVEYORS
 211 WEST WACKER DRIVE
 CHICAGO, ILLINOIS 60606
 PHONE: (312)372-2023 FAX: (312)372-5274

DESIGNED	- S.J.P.	REVISED	-
DRAWN	- A.Y.	REVISED	-
CHECKED	- S.J.P.	REVISED	-
DATE	- JANUARY 27, 2009	REVISED	-

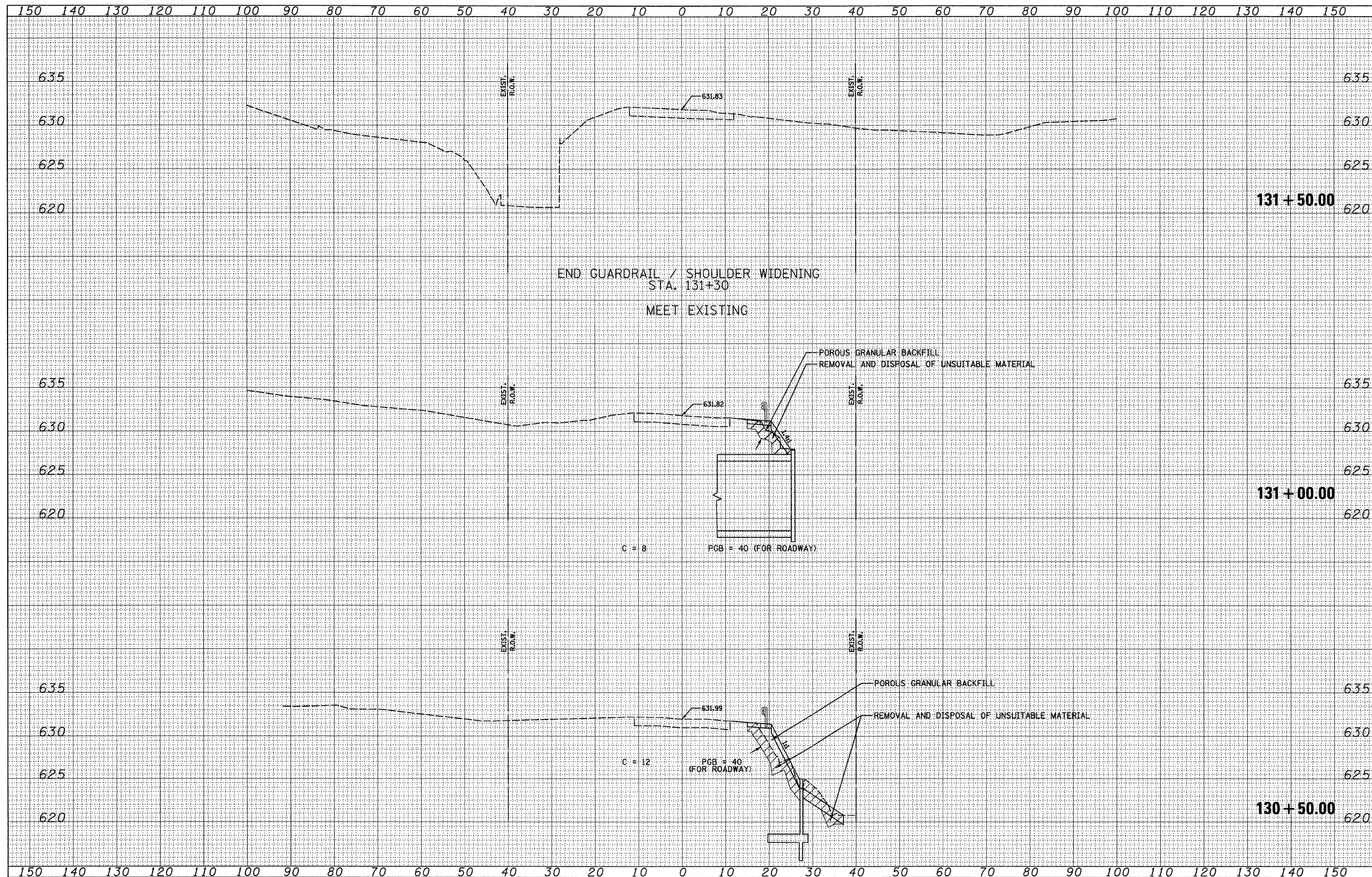
STATE OF ILLINOIS
DEPARTMENT OF TRANSPORTATION

CROSS SECTIONS
CH 92 (FOREST WAY DRIVE)
 SCALE: NONE SHEET NO. 1 OF 2 SHEETS STA. 129+00.00 TO STA. 130+00.00

CH	SECTION	COUNTY	TOTAL SHEETS	SHEET NO.
92	2008-029 I	COOK	15	12
CONTRACT NO. 60E61			ILLINOIS FED. AID PROJECT	

DATE	
BY	
DESIGNED	
DRAWN	
CHECKED	
DATE	
REVISIONS	
NO.	
AREAS CHECKED	
NOTE BOOK	
NO.	
FINAL SURVEY	
NO.	

DATE	
BY	
DESIGNED	
DRAWN	
CHECKED	
DATE	
REVISIONS	
NO.	
AREAS CHECKED	
NOTE BOOK	
NO.	
ORIGINAL SURVEY	
NO.	



FILE NAME = 1024M_sht_X5.dgn
 PLOT DATE = 1/30/2009

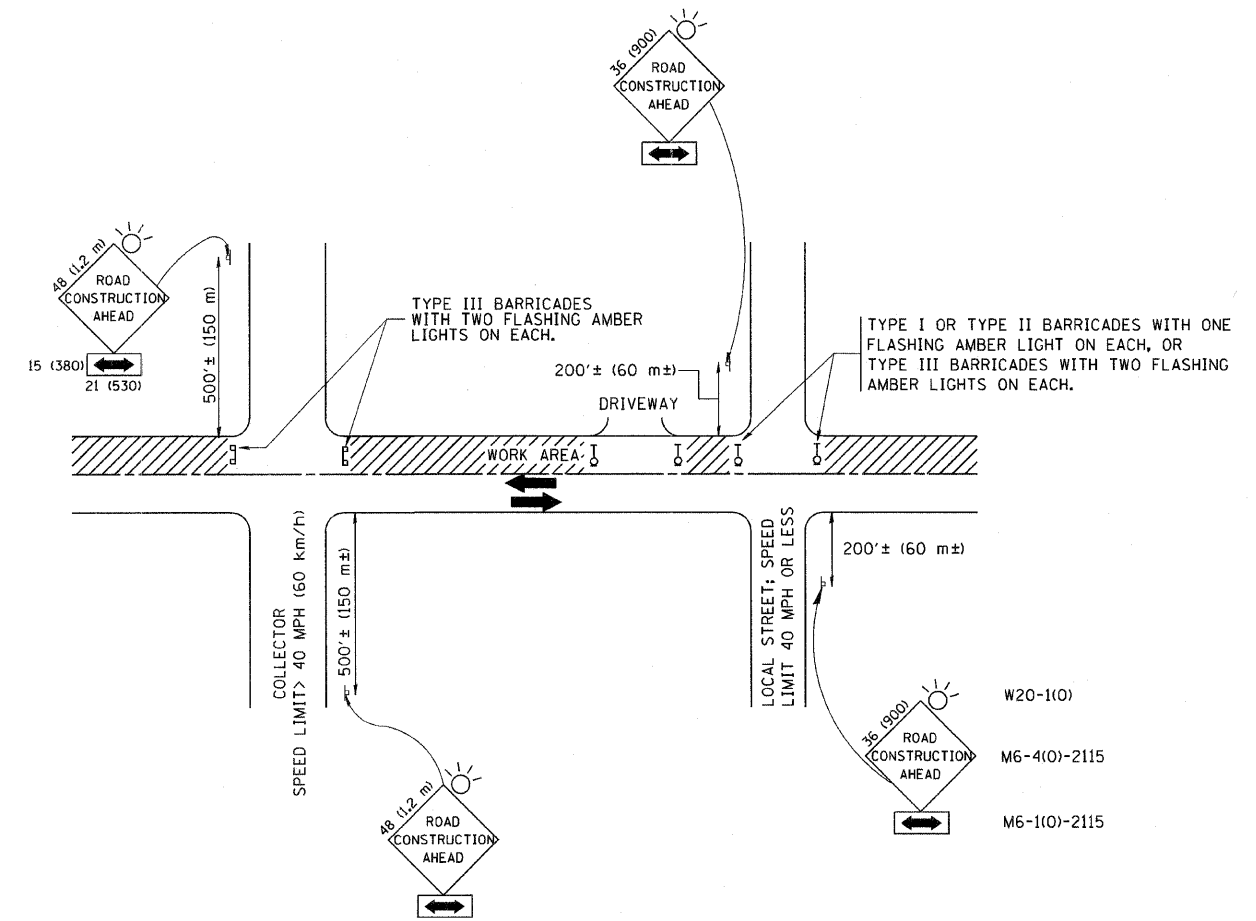
CHRISTIAN ROGE & ASSOCIATES, INC.
 ENGINEERS-PLANNERS-SURVEYORS
 211 WEST WACKER DRIVE
 CHICAGO, ILLINOIS 60606
 PHONE: (312)372-2023 FAX: (312)372-5274

DESIGNED	- S.J.P.	REVISED	-
DRAWN	- A.Y.	REVISED	-
CHECKED	- S.J.P.	REVISED	-
DATE	- JANUARY 27, 2009	REVISED	-

STATE OF ILLINOIS
DEPARTMENT OF TRANSPORTATION

CROSS SECTIONS
CH 92 (FOREST WAY DRIVE)
 SCALE: NONE SHEET NO. 2 OF 2 SHEETS STA. 130+50.00 TO STA. 131+50.00

CH	SECTION	COUNTY	TOTAL SHEETS	SHEET NO.
92	2008-029 I	COOK	15	13
				CONTRACT NO. 60E61
ILLINOIS FED. AID PROJECT				



TRAFFIC CONTROL AND PROTECTION FOR SIDE ROADS, INTERSECTIONS, AND DRIVEWAYS

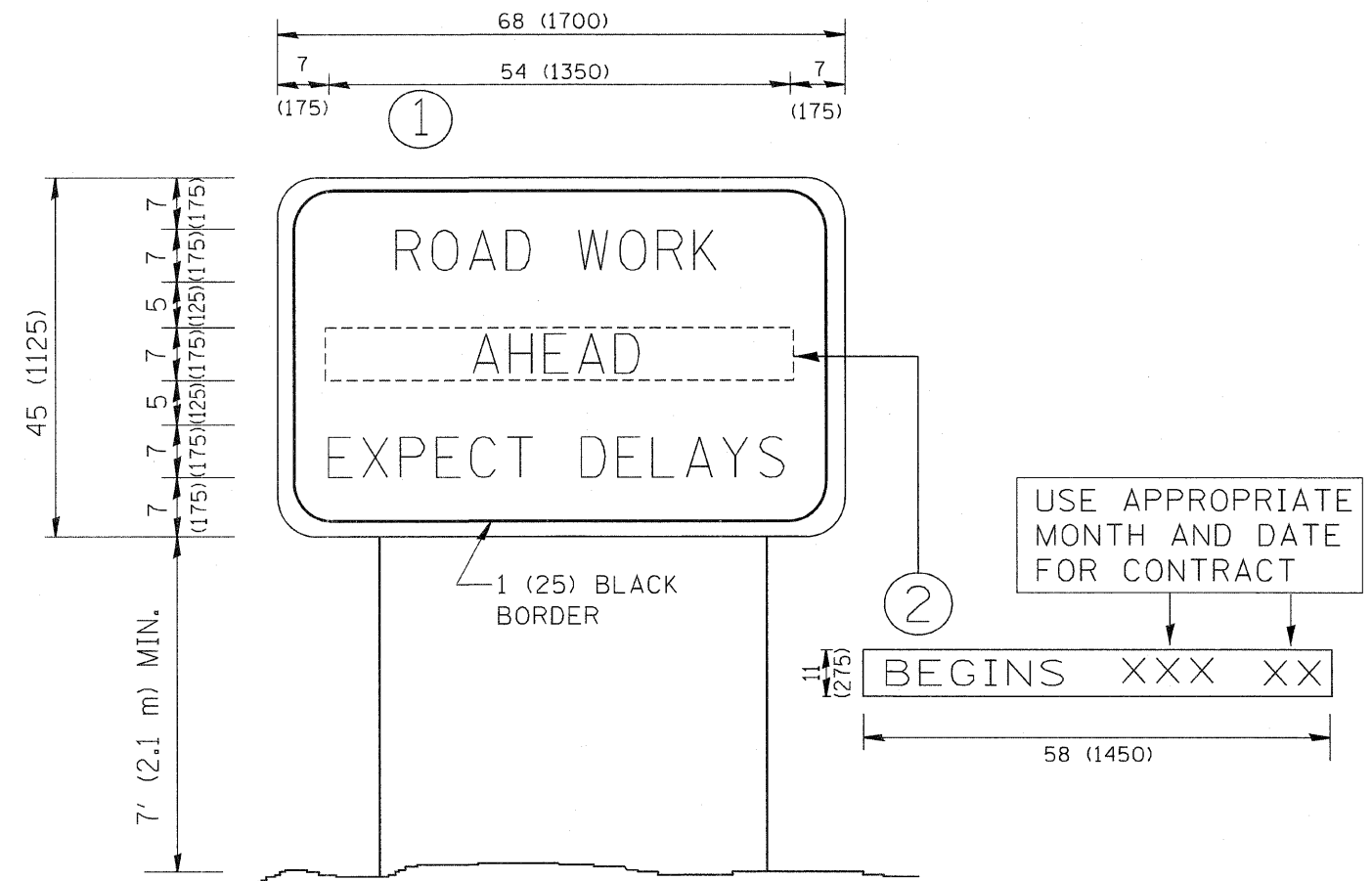
NOTES:

- A. FOR NO LANE RESTRICTION ON THE SIDE ROAD OR DRIVEWAYS
 1. SIDE ROAD WITH A SPEED LIMIT OF 40 MPH (60 km/h) OR LESS AS SHOWN ON THE DRAWING AND AS DIRECTED BY THE ENGINEER:
 - a) ONE ROAD CONSTRUCTION AHEAD SIGN 36 x 36 (900x900) WITH A FLASHER AND FLAG MOUNTED ON IT APPROXIMATELY 200' (60 m) IN ADVANCE OF THE MAIN ROUTE.
 - b) THE CLOSED PORTION OF THE MAIN ROUTE SHALL BE PROTECTED BY BLOCKING WITH TYPE I, TYPE II OR TYPE III BARRICADES, 1/3 OF THE CROSS SECTION OF THE CLOSED PORTION.
 2. SIDE ROAD WITH A SPEED LIMIT GREATER THAN 40 MPH (60 km/h) AS SHOWN ON THE DRAWING AND AS DIRECTED BY THE ENGINEER:
 - a) ONE ROAD CONSTRUCTION AHEAD SIGN 48 x 48 (1.2 m x 1.2 m) WITH A FLASHER MOUNTED ON IT APPROXIMATELY 500' (150 m) IN ADVANCE OF THE MAIN ROUTE.
 - b) THE CLOSED PORTION OF THE MAIN ROUTE SHALL BE PROTECTED BY BLOCKING WITH TYPE III BARRICADES, 1/2 OF THE CROSS SECTION OF THE CLOSED PORTION.
 3. WHEN THE SIDE ROAD LIES BETWEEN THE BEGINNING OF THE MAINLINE SIGNING AND THE WORK ZONE, A SINGLE HEADED ARROW (M6-1) SHALL BE USED IN LIEU OF THE DOUBLE HEADED ARROW (M6-4).
- B. FOR A LANE CLOSURE ON A SIDE ROAD OR DRIVEWAY:

USE APPLICABLE PORTIONS OF THE TYPICAL APPLICATION OF TRAFFIC CONTROL DEVICES (STD. 701501, STD. 701606 OR THE APPROPRIATE STANDARD). THE SPACING OF SIGNS AND BARRICADES SHALL BE ADJUSTED FOR FIELD CONDITIONS AS DIRECTED BY THE ENGINEER. THE DIRECTIONAL ARROW SHALL BE COVERED OR REMOVED WHEN NO LONGER CONSISTENT WITH THE SIDE ROAD LANE CLOSURE.
- C. ADVANCE WARNING SIGNS ARE TO BE OMITTED ON DRIVEWAY UNLESS OTHERWISE NOTED.
- D. THE TRAFFIC CONTROL AND PROTECTION FOR SIDE ROADS, INTERSECTIONS, AND DRIVEWAYS SHALL BE INCIDENTAL TO THE COST OF SPECIFIED TRAFFIC CONTROL STANDARDS OR ITEMS.

All dimensions are in millimeters (inches) unless otherwise shown.

FILE NAME = W:\diststd\22x34\tc18.dgn	USER NAME = goglianob	DESIGNED - LHA	REVISED - J. OBERLE 10-18-95	STATE OF ILLINOIS DEPARTMENT OF TRANSPORTATION	TRAFFIC CONTROL AND PROTECTION FOR SIDE ROADS, INTERSECTIONS, AND DRIVEWAYS			RTE.	SECTION	COUNTY	TOTAL SHEETS	SHEET NO.
	PLOT SCALE = 50.000' / IN.	DRAWN -	REVISED - A. HOUSEH 03-06-96		2008-0291	COOK	15	14				
	PLOT DATE = 1/4/2008	CHECKED -	REVISED - A. HOUSEH 10-15-96		TC-10			CONTRACT NO. 60E61				
	DATE - 06-89	REVISED - T. RAMMACHER 01-06-00		SCALE: NONE	SHEET NO. 1 OF 1 SHEETS	STA. 130+00	TO STA. 131+15	FED. ROAD DIST. NO. 1 ILLINOIS FED. AID PROJECT				



NOTES:

1. USE BLACK LETTERING ON ORANGE BACKGROUND.
2. ERECT SIGNS IN ADVANCE OF THE LOCATION FOR THE "ROAD CONSTRUCTION AHEAD" SIGN AT LOCATIONS AS DIRECTED BY THE ENGINEER.
3. ERECT SIGN ① WITH INSTALLED PANEL ② ONE WEEK PRIOR TO THE START OF CONSTRUCTION.
4. REMOVE PANEL ② SOON AFTER THE START OF CONSTRUCTION.
5. SEE SPECIAL PROVISION FOR "TEMPORARY INFORMATION SIGNING" FOR ADDITIONAL INFORMATION.
6. ONE SIGN ASSEMBLY EQUALS 25.70 SQ. FT. (2.3 SQ. M.)
7. SHALL BE PAID FOR AS TEMPORARY INFORMATION SIGNING.

ALL DIMENSIONS ARE IN INCHES (MILLIMETERS) UNLESS OTHERWISE SHOWN.

FILE NAME = W:\diststd\22x34\to22.dgn	USER NAME = goglianobt	DESIGNED -	REVISED - R. MIRS 09-15-97	STATE OF ILLINOIS DEPARTMENT OF TRANSPORTATION	ARTERIAL ROAD INFORMATION SIGN		RTE.	SECTION	COUNTY	TOTAL SHEETS	SHEET NO.	
		DRAWN -	REVISED - R. MIRS 12-11-97		SCALE: NONE	SHEET NO. 1 OF 1 SHEETS	STA. 130+00	TO STA. 131+15	2008-0291	COOK	15	15
		PLOT SCALE = 50.000' / IN.	CHECKED -		REVISED - T. RAMMACHER 02-02-99			TC-22		CONTRACT NO. 60E61		
		PLOT DATE = 1/4/2008	DATE -		REVISED - C. JUCIUS 01-31-07	FED. ROAD DIST. NO. 1 ILLINOIS FED. AID PROJECT						