

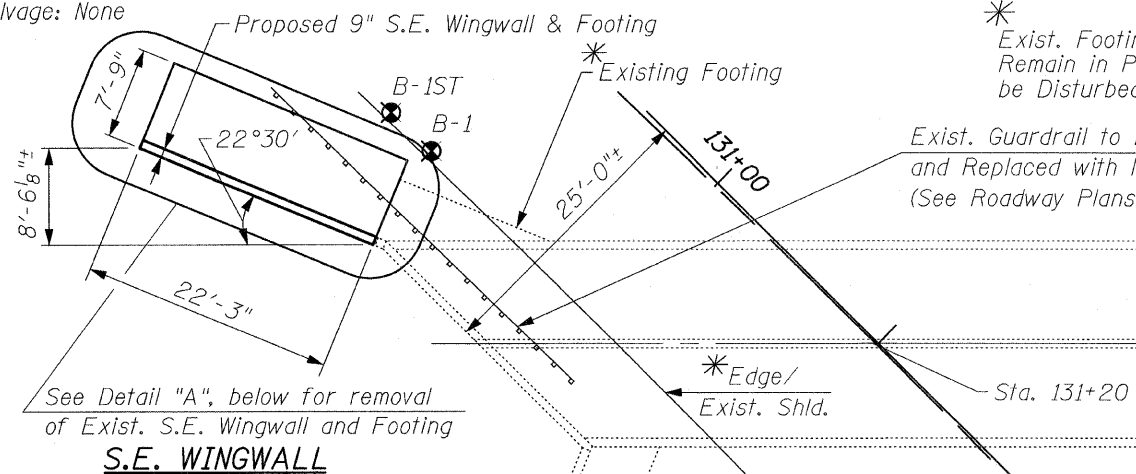
BENCH MARK:

CP #2, 5/8" φ Iron Rod Found at Sta. 130+22.30, 53.60' Lt., Elev. 632.48

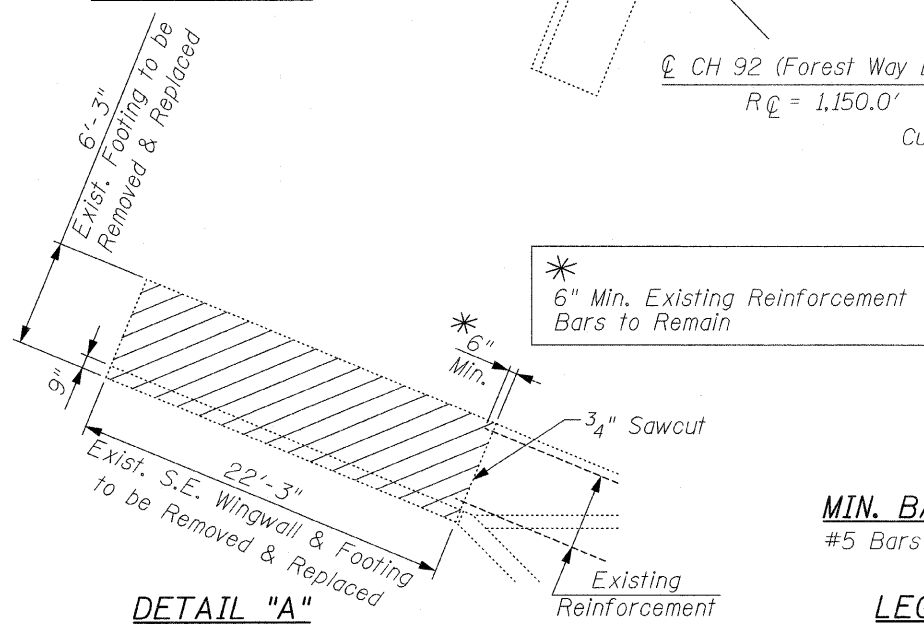
EXISTING STRUCTURE:

22'-3" Long C.I.P. L-Shaped Wingwall For Culvert under CH 92 (Forest Way Drive).

Salvage: None



See Detail "A", below for removal of Exist. S.E. Wingwall and Footing



DETAIL "A"

NOTE:

The Contractor must not Disturb the Soil Under the Footing During Concrete Removal

LEGEND:

Concrete Removal

MIN. BAR LAP
#5 Bars = 2'-2"

LEGEND:

B.F. = Back Face
E.F. = Each Face

DESIGN STRESSES

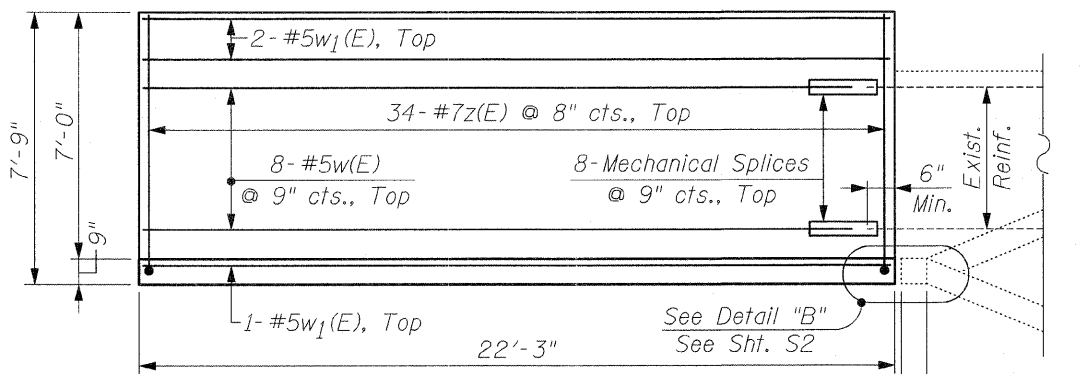
FIELD UNITS
f_y = 60,000 psi
f'c = 3,500 psi

DESIGN SPECIFICATIONS

AASHTO 17th Edition-2002

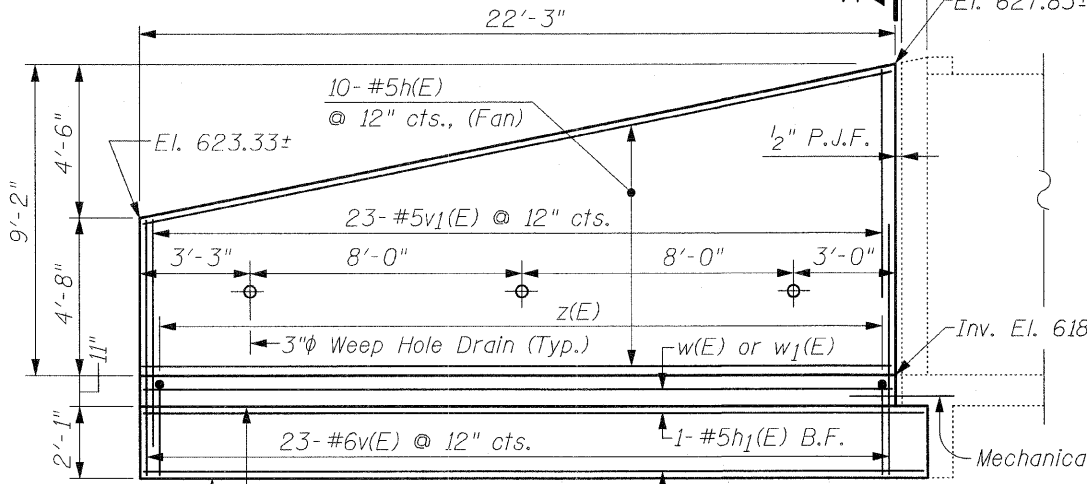
PLAN

Culvert Under CH 92 (Forest Way Drive) at Sta. 131+20



PLAN

(Cast-In-Place Concrete Cantilever Wingwall)



ELEVATION
S.E. WINGWALL

GENERAL NOTES:

Plan Dimensions and Details relative to Existing Plans are subject to nominal Construction variations. The Contractor shall field verify Existing Dimensions and Details affecting New Construction and make necessary approved adjustments prior to Construction or ordering of Materials. Such variations shall not be cause for additional compensation for a change in the scope of the work, however, the Contractor will be paid for the quantity actually furnished based upon the unit price bid for the work.

All Exposed Concrete Edges shall be Chamfered 3/4", Unless Otherwise Noted.

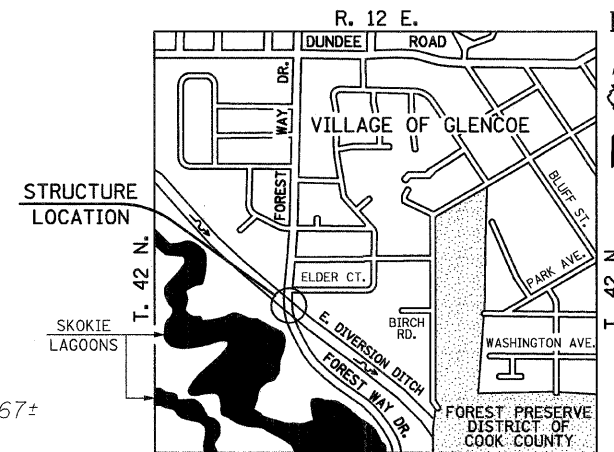
For Soil Boring Logs, See Sht. S3.

Reinforcement Bars shall conform to the Requirements of ASTM A 706, Grade 60. See Special Provisions.

Reinforcement Bars designated (E) shall be Epoxy Coated.

BILL OF MATERIAL

Bar	No.	Size	Length	Shape
h(E)	10	#5	21'-11"	—
h1(E)	3	#5	22'-8"	—
v(E)	23	#6	7'-4"	—
v1(E)	23	#5	6'-8"	—
w(E)	8	#5	21'-5"	—
w1(E)	3	#5	21'-11"	—
z(E)	34	#7	10'-1"	┌
Concrete Structures		Cu. Yd.	11.6	
Structure Excavation		Cu. Yd.	62	
Reinforcement Bars, Epoxy Coated		Pound	1,660	
Concrete Removal		Cu. Yd.	10.5	
Porous Granular Backfill		Cu. Yd.	52	
Underwater Structure Excavation Protection-Location 1		Each	1	
Geocomposite Wall Drain		Sq. Yd.	13	
Mechanical Splice		Each	8	



LOCATION SKETCH

FILE NAME = plan_sections.dgn	USER NAME = IDOT	DESIGNED - B.N.S.	REVISED -
		DRAWN - R.E.S./F.M.	REVISED -
		CHECKED - B.N.S./J.C.N.	REVISED -
		DATE - JANUARY 27, 2009	REVISED -

STATE OF ILLINOIS
DEPARTMENT OF TRANSPORTATION

WINGWALL PLAN & ELEVATION
CH 92 (FOREST WAY DRIVE)

SCALE: SHEET NO. S1 OF S3 SHEETS STA. TO STA.

CH	SECTION	COUNTY	TOTAL SHEETS	SHEET NO.
92	2008-029 I	COOK	14	9
CONTRACT NO. 60E61				
FED. ROAD DIST. NO. ILLINOIS FED. AID PROJECT				



CHRISTIAN-ROGE & ASSOCIATES, INC.
ENGINEERS / PLANNERS / SURVEYORS
211 W. WACKER DRIVE CHICAGO, IL 60606
PHONE: (312)372-2023 FAX: (312)372-5274