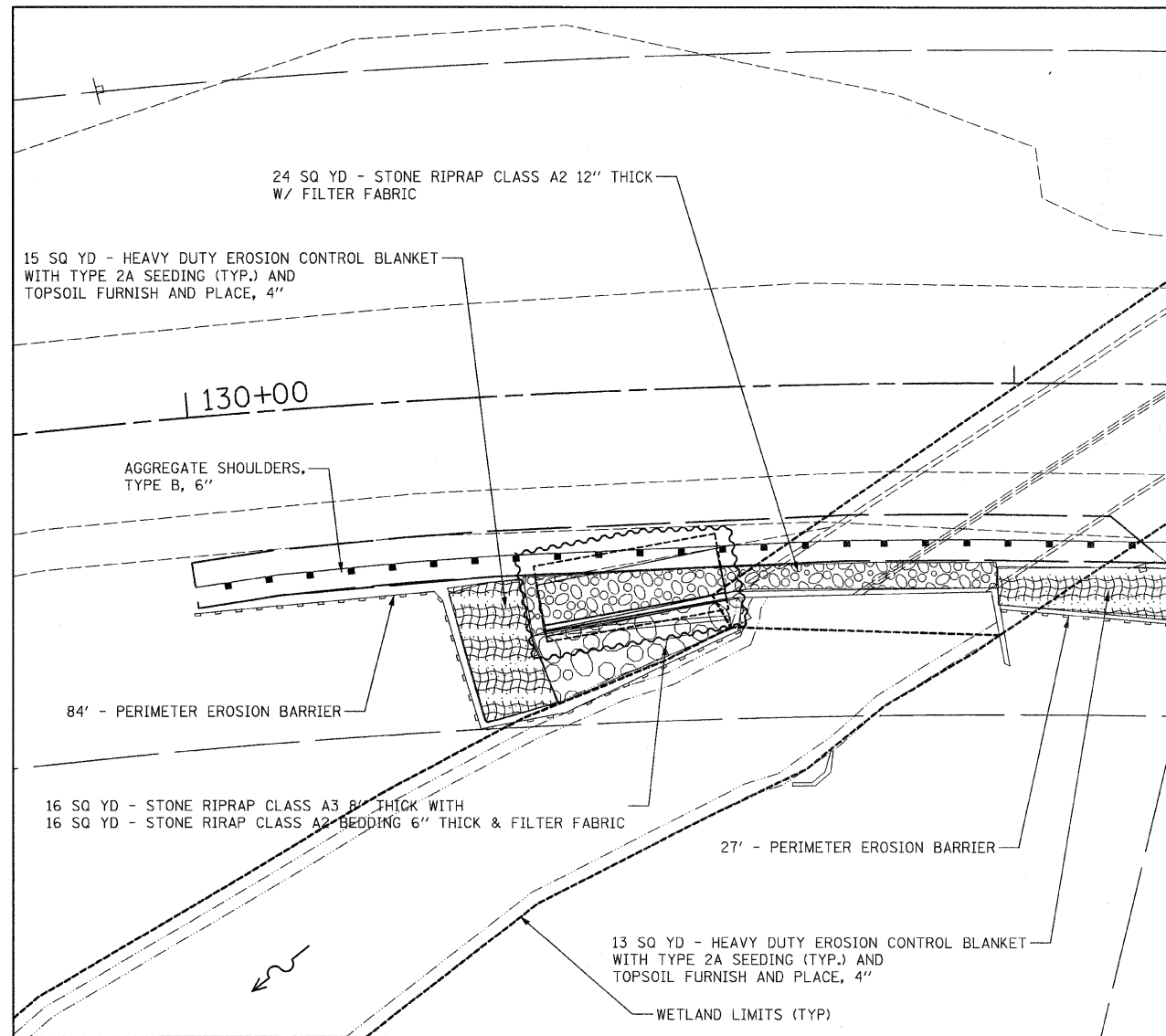


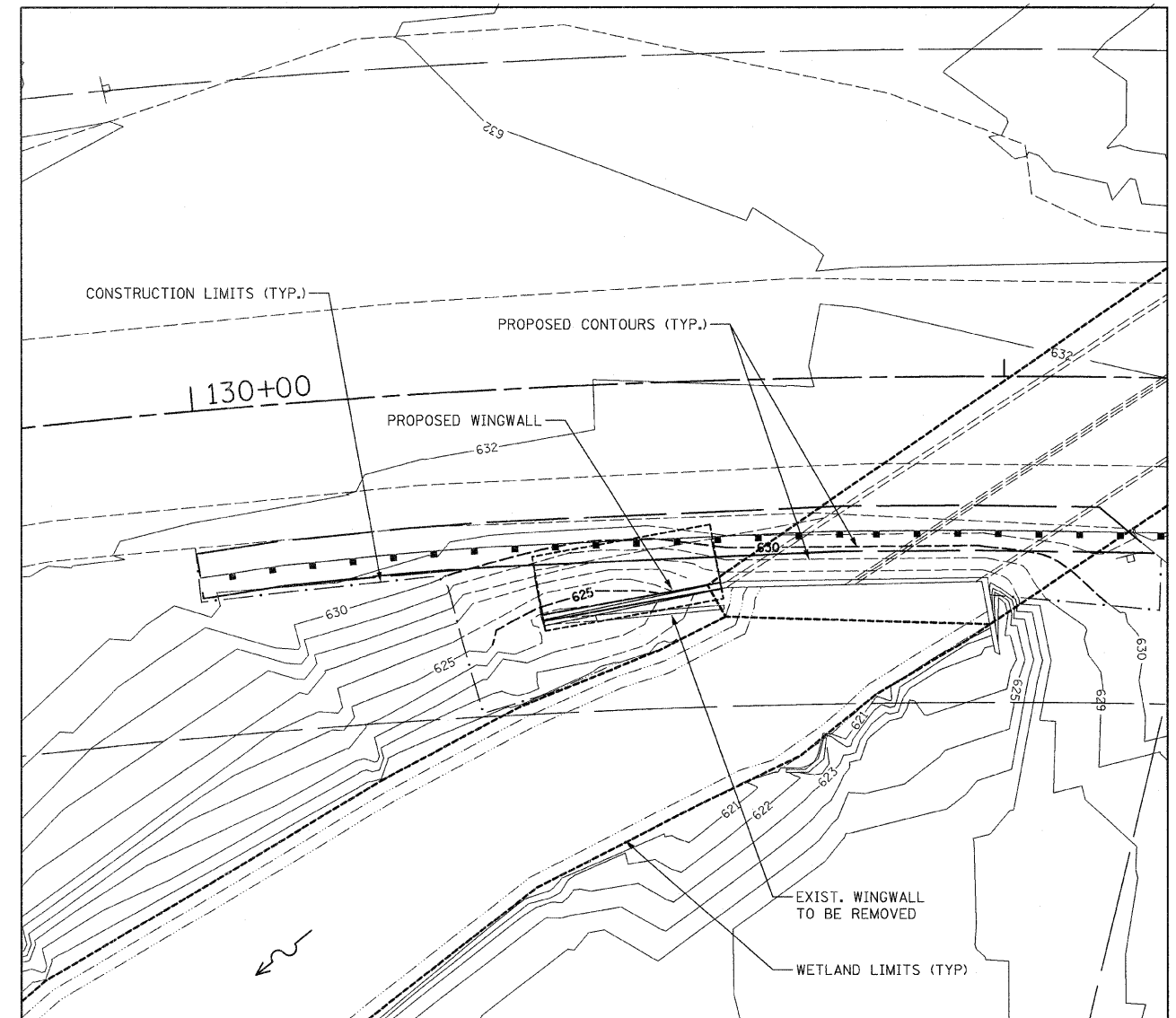
**EROSION CONTROL PLAN**

1. THE CONTRACTOR SHALL USE A SILT CURTAIN WHEN EXCAVATING IN OR NEAR THE WATER.
2. ALL PUMPING FROM DE-WATERING SHALL BE FILTERED THROUGH A PORTABLE SEDIMENT TANK OR BAG PRIOR TO OUTLETING INTO THE DITCH.
3. THE TEMPORARY EROSION CONTROL SYSTEMS SHALL BE REMOVED AS DIRECTED BY THE ENGINEER AFTER IT IS LONGER NEEDED.
4. EARTH STOCKPILES SHALL NOT BE ALLOWED WITHIN THE CONSTRUCTION SITE.

5. SEEDING CLASS 2 AND FERTILIZER SHALL BE PLACED ON ALL DISTURBED AREAS IN ACCORDANCE WITH SECTION 250.  
THE COST OF SEEDING AND FERTILIZER SHALL BE INCLUDED IN THE UNIT PRICE FOR HEAVY-DUTY EROSION CONTROL BLANKET.



**EROSION CONTROL PLAN**



**GRADING PLAN**

FILE NAME = 1024M\_sht\_GR.10.dgn  
PLOT DATE = 1/26/2009

**CHRISTIAN-ROGE & ASSOCIATES, INC.**  
ENGINEERS-PLANNERS-SURVEYORS  
211 WEST WACKER DRIVE  
CHICAGO, ILLINOIS 60606  
PHONE: (312)372-2023 FAX: (312)372-5274

DESIGNED - S.J.P.	REVISED -
DRAWN - A.Y.	REVISED -
CHECKED - S.J.P.	REVISED -
DATE - JANUARY 27, 2009	REVISED -

**STATE OF ILLINOIS**  
**DEPARTMENT OF TRANSPORTATION**

**EROSION CONTROL AND GRADING PLAN**  
**CH 92 (FOREST WAY DRIVE)**

SCALE: 1" = 10' SHEET NO. 1 OF 1 SHEETS STA. 130+00 TO STA. 131+15

CH	SECTION	COUNTY	TOTAL SHEETS	SHEET NO.
92	2008-029 I	COOK	15	8
CONTRACT NO. 60E61				
ILLINOIS FED. AID PROJECT				