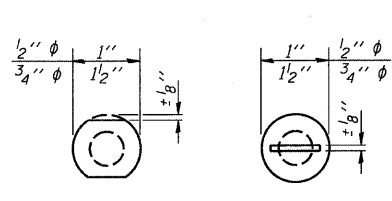
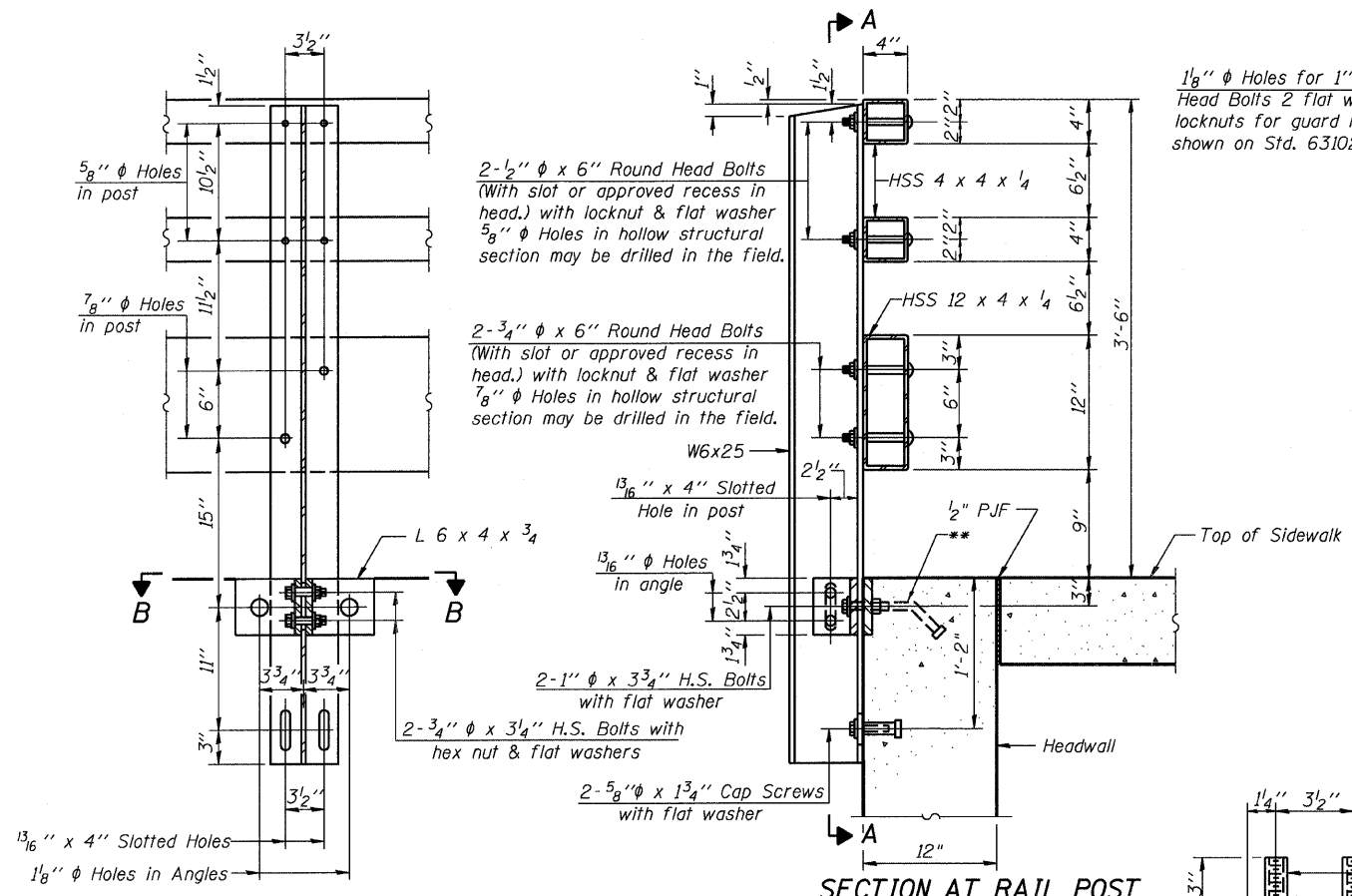


STATE OF ILLINOIS
DEPARTMENT OF TRANSPORTATION

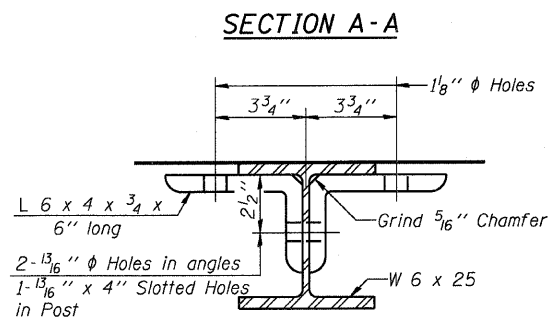


VIEW A-A

DETAIL OF 1/2" & 3/4" ROUND HEAD BOLTS



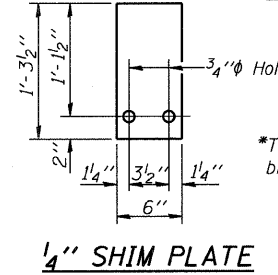
SECTION AT RAIL POST



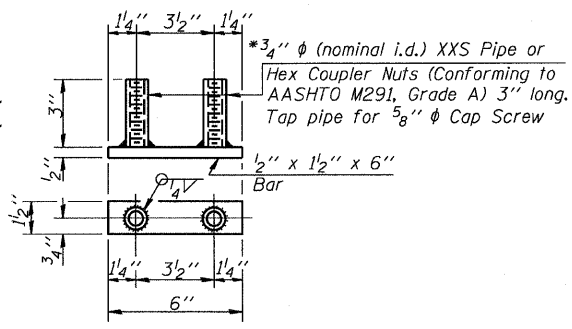
SECTION A-A

SECTION B-B

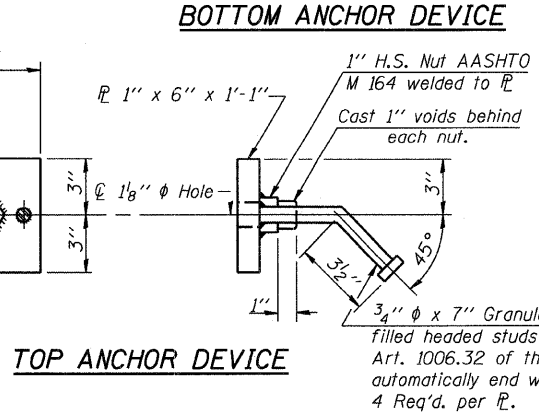
(10'-6" Maximum Post Spacing)



1/4" SHIM PLATE

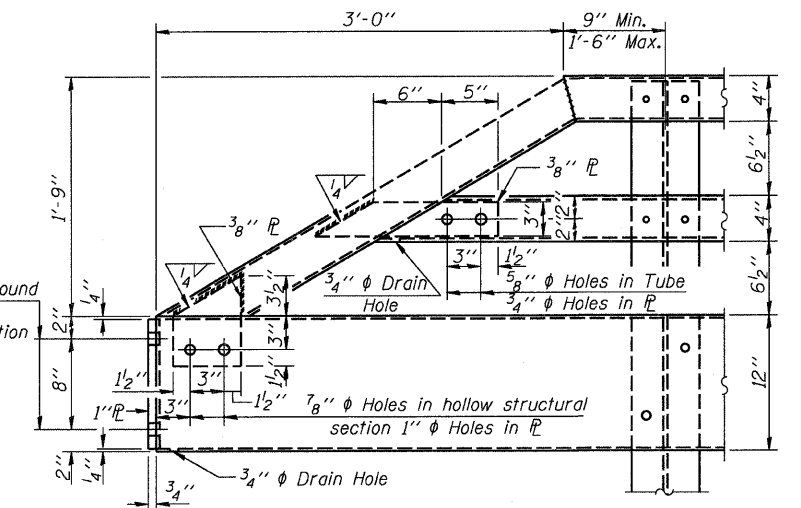


BOTTOM ANCHOR DEVICE

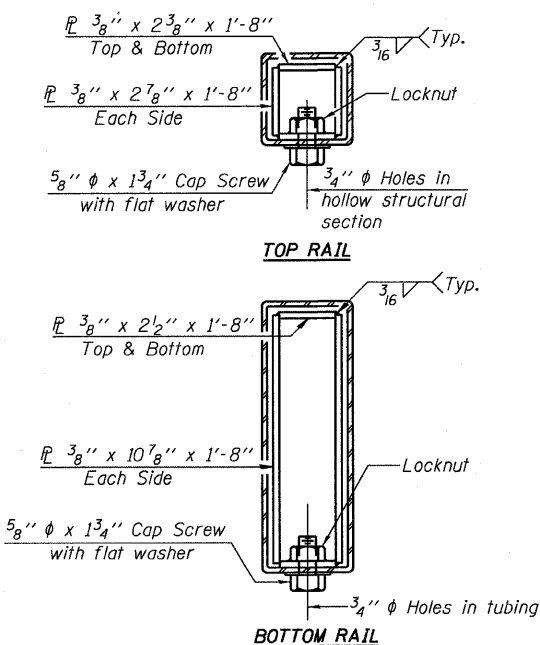
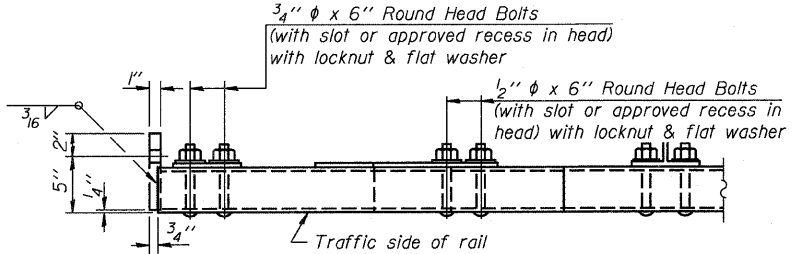


TOP ANCHOR DEVICE

1/8" ϕ Holes for 1" ϕ x 4" Round Head Bolts 2 flat washers & locknuts for guard rail connection shown on Std. 631026

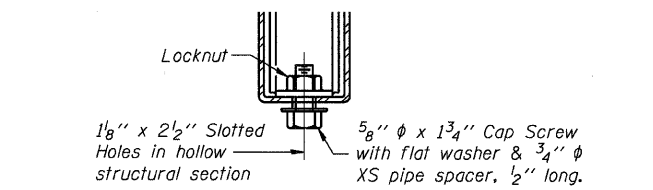


END OF RAIL DETAILS

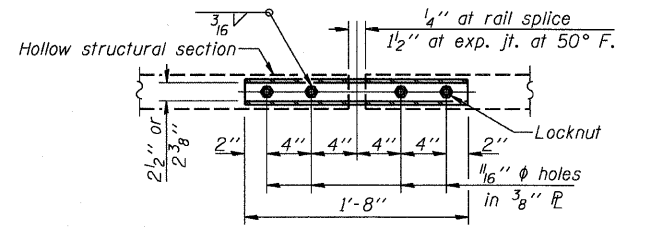


SECTIONS AT RAIL SPLICE

All field drilled holes shall be coated with an approved zinc rich paint before erection.
For multi-span bridges, sufficient 1/4" x 6" x 1'-3 1/2" galvanized steel shims shall be provided to align rail between adjacent spans. Cost included with Steel Railing, Type TP-1.
All steel rail elements shall be galvanized according to Article 509.05 of the Standard Specifications.
**The studs of the anchor devices shall be placed below the top reinforcement bars and the outermost longitudinal reinforcement bar shall be placed directly above the studs of the rail post anchor device.



RAIL SPLICE CONNECTION AT EXPANSION JT.



PLAN-BOTTOM. SPLICE R TYPICAL

BILL OF MATERIAL

Item	Unit	Quantity
Steel Railing, Type TP-1	Foot	60.7

STEEL RAILING, TYPE TP-1

COLLINS ENGINEERS SHEET NO. S10 OF S11 SHEETS		F.A.U. RTE. 2774	SECTION 0306T	COUNTY COOK	TOTAL SHEETS 55	SHEET NO. 35
		SN: 016-2848			CONTRACT NO. 60C07	
DESIGNED: LDB	CHECKED: JMH	FED. ROAD DIST. NO. -		ILLINOIS FED. AID PROJECT		
DATE: 1/29/09	DRAWN: DR					