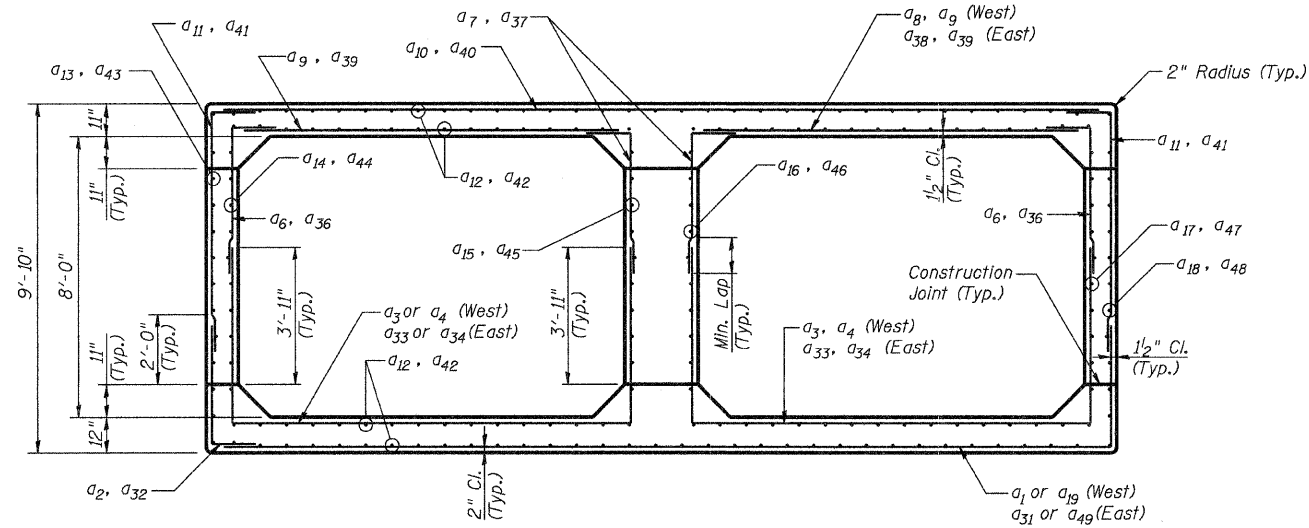
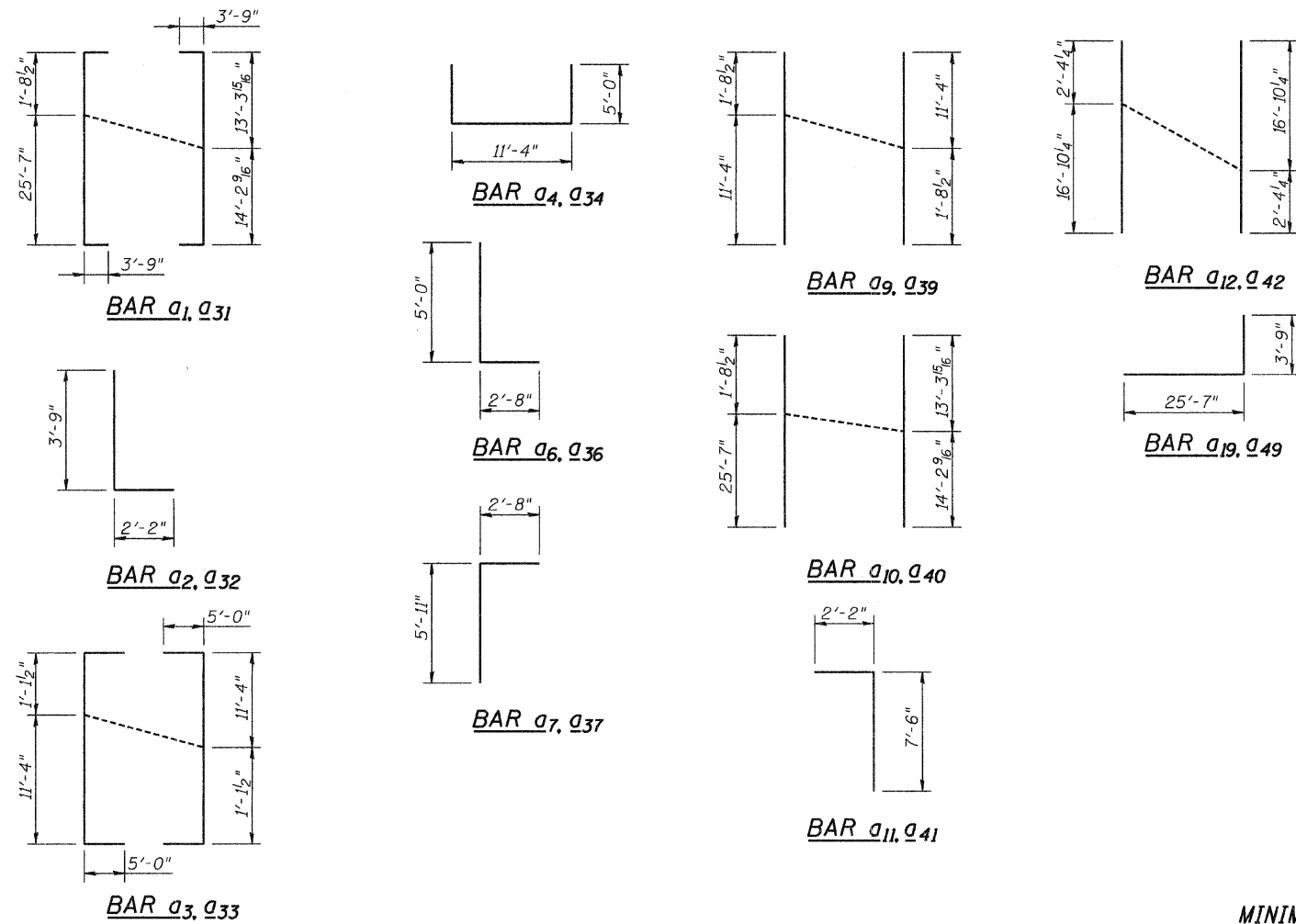


STATE OF ILLINOIS  
DEPARTMENT OF TRANSPORTATION



SECTION F-F



MINIMUM BAR LAPS

#5 Bar = 2'-2"  
#6 Bar = 2'-7"

BILL OF MATERIAL \*\*  
WEST SIDE

Bar	No.	Size	Length	Shape
a1	11	5	35'-0 1/2"	[ ]
a2	5	5	5'-11"	[ ]
a3	10	5	22'-5 1/2"	[ ]
a4	19	5	21'-4"	[ ]
a6	27	6	7'-8"	[ ]
a7	27	6	8'-7"	[ ]
a8	19	6	11'-4"	[ ]
a9	10	6	13'-0 1/2"	[ ]
a10	11	5	27'-6 1/2"	[ ]
a11	27	5	9'-8"	[ ]
a12	72	5	19'-2 1/2"	[ ]
a13	14	5	2'-4 1/2"	[ ]
a14	14	5	2'-8 1/2"	[ ]
a15	14	5	6'-9 1/8"	[ ]
a16	14	5	7'-9"	[ ]
a17	14	5	14'-1"	[ ]
a18	14	5	14'-4 1/2"	[ ]
a19	5	5	29'-4"	[ ]

\*\* For information only. The items in this Table are not to be paid separately, but are to be included in the cost for the pay item "Box Culvert End Sections".

BILL OF MATERIAL \*\*  
EAST SIDE

Bar	No.	Size	Length	Shape
a31	11	6	35'-0 1/2"	[ ]
a32	5	5	5'-11"	[ ]
a33	10	5	22'-5 1/2"	[ ]
a34	19	5	21'-4"	[ ]
a36	27	6	7'-8"	[ ]
a37	27	6	8'-7"	[ ]
a38	19	6	11'-4"	[ ]
a39	10	6	13'-0 1/2"	[ ]
a40	11	5	27'-6 1/2"	[ ]
a41	27	5	9'-8"	[ ]
a42	72	5	19'-2 1/2"	[ ]
a43	14	5	2'-4 1/2"	[ ]
a44	14	5	2'-8 1/2"	[ ]
a45	14	5	6'-9 1/8"	[ ]
a46	14	5	7'-9"	[ ]
a47	14	5	14'-1"	[ ]
a48	14	5	14'-4 1/2"	[ ]
a49	5	5	29'-4"	[ ]

\*\* For information only. The items in this Table are not to be paid separately, but are to be included in the cost for the pay item "Box Culvert End Sections".

BOX CULVERT  
END SECTION DETAILS

<b>COLLINS ENGINEERS</b> DESIGNED: LDB CHECKED: JMH DATE: 3/27/09 DRAWN: DR	SHEET NO. S9 OF S11 SHEETS	F.A.U. RTE.	SECTION	COUNTY	TOTAL SHEETS	SHEET NO.
		2774	0306T	COOK	55	34
SN: 016-2848			CONTRACT NO. 60C07			
FED. ROAD DIST. NO. - ILLINOIS FED. AID PROJECT						