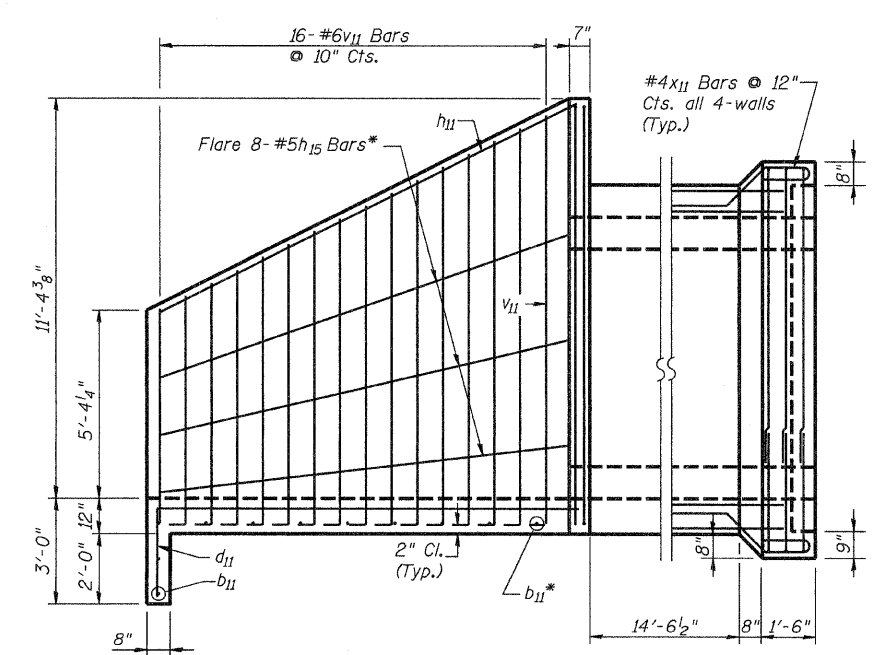
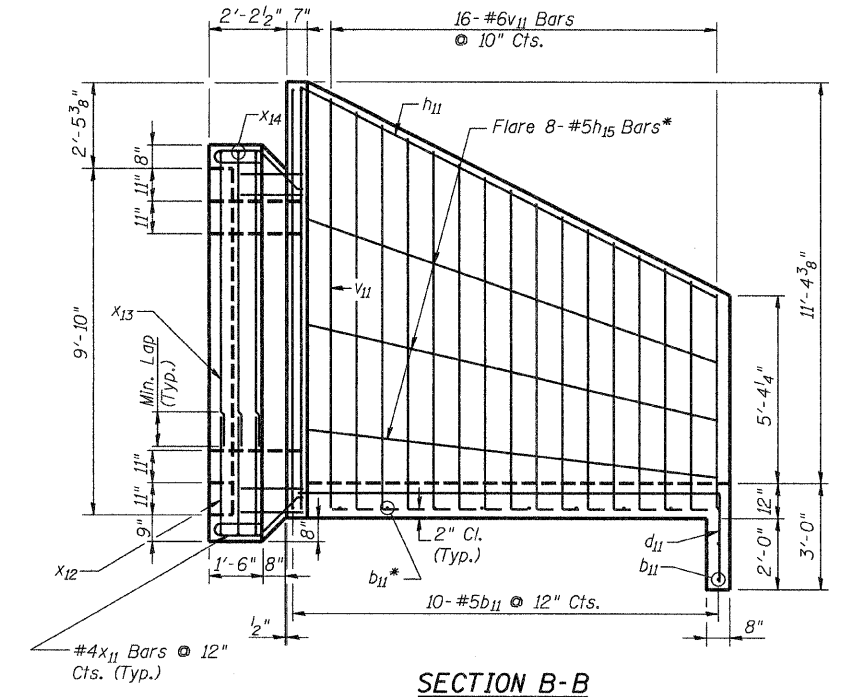
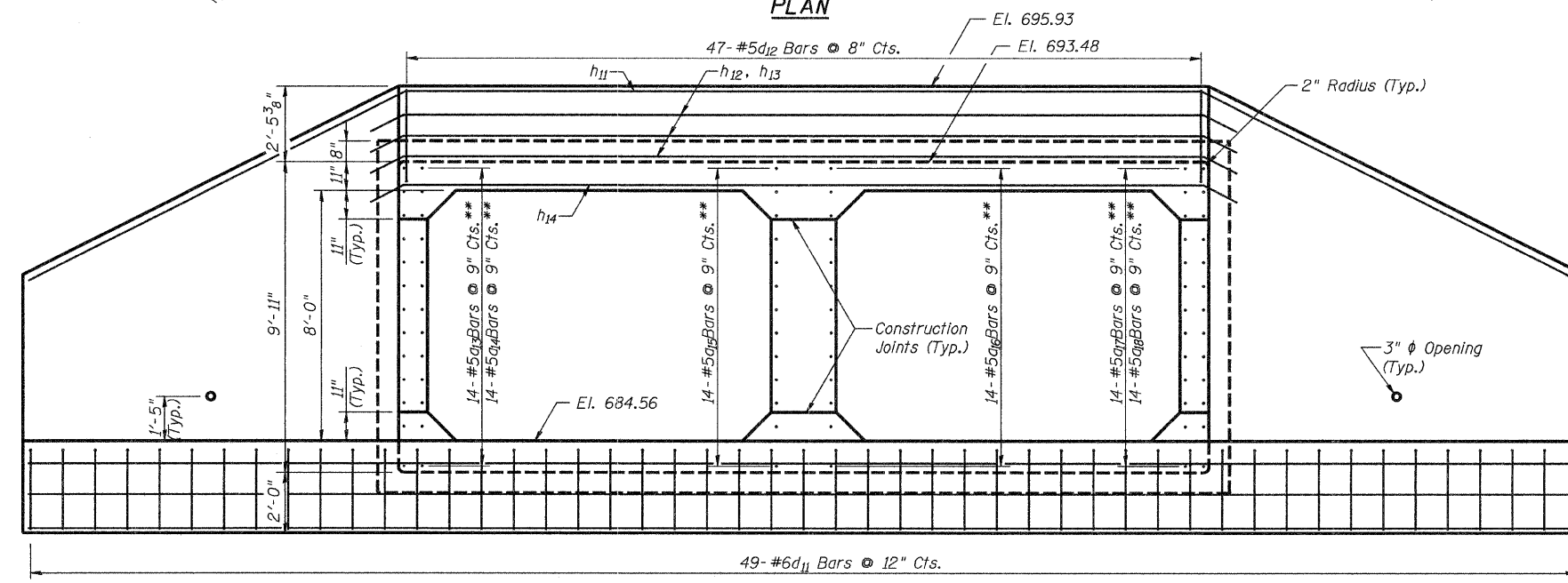
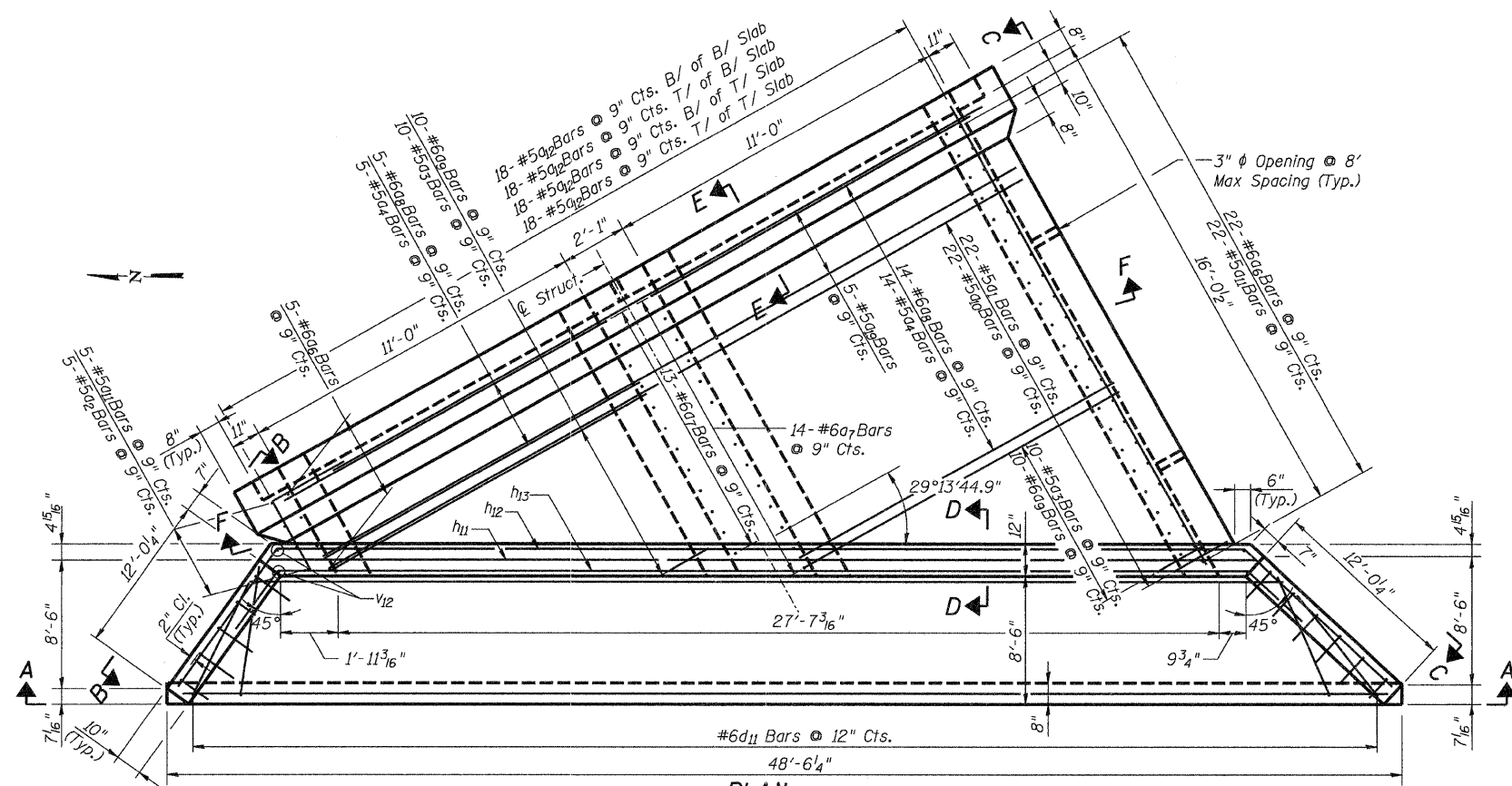


STATE OF ILLINOIS
DEPARTMENT OF TRANSPORTATION



Notes:
For Box Culvert Layout see sheet S3 of S11.
For Sections D-D and E-E see sheet S6 of S11.
For Section F-F see sheet S9 of S11.
For Steel Railing Details see sheet S10 of S11.

MINIMUM BAR LAPS
#4 Bar = 1'-8"
#5 Bar = 2'-2"
#6 Bar = 2'-7"

BILL OF MATERIAL

ITEM	UNIT	TOTAL
Box Culvert End Sections	Each	1

COLLINS ENGINEERS
DESIGNED: LDB
DATE: 3/27/09
CHECKED: JMH
DRAWN: DR

SHEET NO. S5 OF S11 SHEETS	F.A.U. RTE. 2774	SECTION 0306T	COUNTY COOK	TOTAL SHEETS 55	SHEET NO. 30
	SN: 016-2848		CONTRACT NO. 60C07		
	FED. ROAD DIST. NO. ILLINOIS FED. AID PROJECT				

* Cut-to-Fit.
** Vertical Reinforcement not shown for clarity.