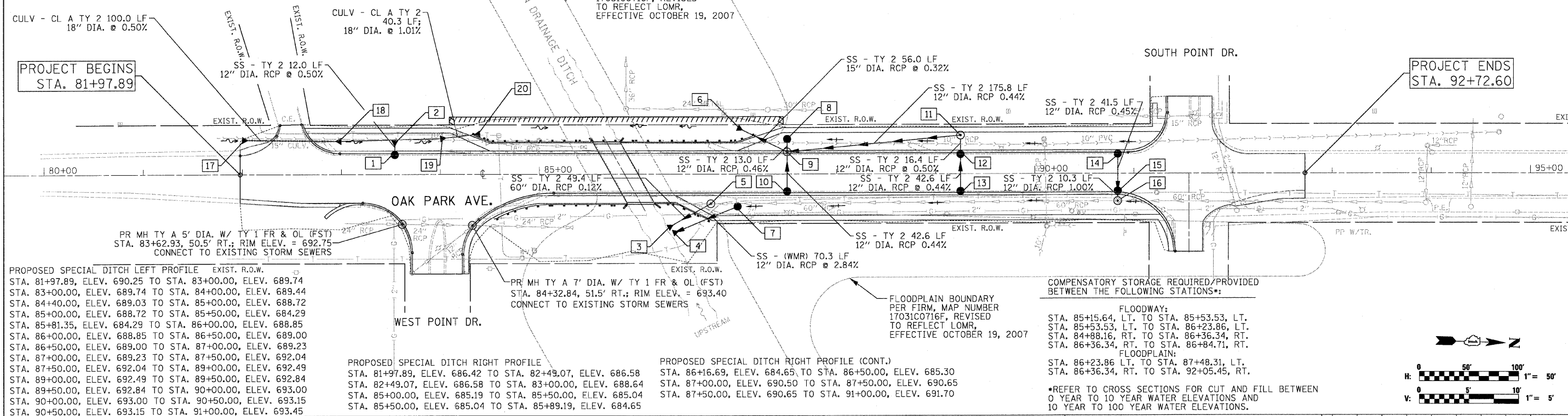


NOTES:  
 1. ALL STORM SEWER TO BE CLASS "A" UNLESS NOTED OTHERWISE.  
 2. RIM ELEVATIONS & OFFSETS FOR DRAINAGE STRUCTURES CONSTRUCTED IN CONJUNCTION WITH GUTTER OR CURB & GUTTER ARE CALLED OUT TO THE EDGE OF THE GUTTER PAN. ALL OTHER DRAINAGE STRUCTURES ARE CALLED OUT TO THE CENTER OF STRUCTURE.



PROPOSED SPECIAL DITCH LEFT PROFILE EXIST. R.O.W.

STA. 81+97.89, ELEV. 690.25 TO STA. 83+00.00, ELEV. 689.74
STA. 83+00.00, ELEV. 689.74 TO STA. 84+00.00, ELEV. 689.44
STA. 84+00.00, ELEV. 689.03 TO STA. 85+00.00, ELEV. 688.72
STA. 85+00.00, ELEV. 688.72 TO STA. 85+50.00, ELEV. 684.29
STA. 85+50.00, ELEV. 684.29 TO STA. 86+00.00, ELEV. 688.85
STA. 86+00.00, ELEV. 688.85 TO STA. 86+50.00, ELEV. 689.00
STA. 86+50.00, ELEV. 689.00 TO STA. 87+00.00, ELEV. 689.23
STA. 87+00.00, ELEV. 689.23 TO STA. 87+50.00, ELEV. 692.04
STA. 87+50.00, ELEV. 692.04 TO STA. 89+00.00, ELEV. 692.49
STA. 89+00.00, ELEV. 692.49 TO STA. 89+50.00, ELEV. 692.84
STA. 89+50.00, ELEV. 692.84 TO STA. 90+00.00, ELEV. 693.00
STA. 90+00.00, ELEV. 693.00 TO STA. 90+50.00, ELEV. 693.15
STA. 90+50.00, ELEV. 693.15 TO STA. 91+00.00, ELEV. 693.45

PROPOSED SPECIAL DITCH RIGHT PROFILE

STA. 81+97.89, ELEV. 686.42 TO STA. 82+49.07, ELEV. 686.58
STA. 82+49.07, ELEV. 686.58 TO STA. 83+00.00, ELEV. 688.64
STA. 83+00.00, ELEV. 688.64 TO STA. 85+00.00, ELEV. 685.04
STA. 85+00.00, ELEV. 685.04 TO STA. 85+89.19, ELEV. 684.65

PROPOSED SPECIAL DITCH RIGHT PROFILE (CONT.)

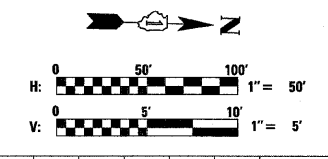
STA. 86+16.69, ELEV. 684.65 TO STA. 86+50.00, ELEV. 685.30
STA. 86+50.00, ELEV. 685.30 TO STA. 87+50.00, ELEV. 690.65
STA. 87+50.00, ELEV. 690.65 TO STA. 91+00.00, ELEV. 691.70

COMPENSATORY STORAGE REQUIRED/PROVIDED BETWEEN THE FOLLOWING STATIONS:

FLOODWAY:  
 STA. 85+15.64, LT. TO STA. 85+53.53, LT.  
 STA. 85+53.53, LT. TO STA. 86+23.86, LT.  
 STA. 84+88.16, RT. TO STA. 86+36.34, RT.  
 STA. 86+36.34, RT. TO STA. 86+84.71, RT.

FLOODPLAIN:  
 STA. 86+23.86, LT. TO STA. 87+48.31, LT.  
 STA. 86+36.34, RT. TO STA. 92+05.45, RT.

\*REFER TO CROSS SECTIONS FOR CUT AND FILL BETWEEN 0 YEAR TO 10 YEAR WATER ELEVATIONS AND 10 YEAR TO 100 YEAR WATER ELEVATIONS.



STRUCTURE NUMBER	STATION	OFFSET	RIM ELEV.	INVERT ELEV.	STRUCTURE TYPE	STRUCTURE NUMBER	STATION	OFFSET	RIM ELEV.	INVERT ELEV.	STRUCTURE TYPE	
715	1	83+54.0	22.5' LT.	693.60	689.64 W	11	89+25.0	39.0' LT.	692.67	690.18 S; 690.18 E	MH TYPE A 7' DIA. W/ TYPE 1 FR & CL (FST)	715
	2	83+54.0	32.5' LT.	---	689.58 E	12	89+25.0	22.6' LT.	693.56	690.26 E; 690.26 W	CB, TYPE A, 4' DIA., TYPE 24 FR & GR (FST)	
	3	86+30.1	54.4' RT.	---	681.18 NW	13	89+25.0	20.0' RT.	693.61	690.45 W	CB, TYPE A, 4' DIA., TYPE 24 FR & GR (FST)	
	4	86+35.0	59.5' RT.	---	682.00 NW	14	90+83.7	21.3' LT.	693.17	688.00 E	CB, TYPE A, 4' DIA., TYPE 24 FR & GR (FST)	
710	5	86+73.0	29.8' RT.	694.00	681.24 SE	15	90+83.7	18.7' RT.	693.23	687.81 E; 687.81 W	CB, TYPE A, 4' DIA., TYPE 24 FR & GR (FST)	710
	6	87+00.0	47.0' LT.	---	689.23 NE	16	90+83.6	27.7' RT.	692.28	687.71 W; MATCH EXISTING INV. (S & N)	MH TYPE A 9' DIA. W/ TYPE 1 F & CL (FST)	
	7	87+00.0	32.7' RT.	690.50	684.00 SE	17	82+00.0	34.8' LT.	---	690.24 N	FLARED END SECTION 18" DIA. RCP	
	8	87+50.0	35.5' LT.	692.04	690.04 E	18	83+00.0	33.8' LT.	---	689.74 S	FLARED END SECTION 18" DIA. RCP	
705	9	87+50.0	22.6' LT.	694.56	689.41 N; 690.14 E; 689.98 W; 689.41 SW	19	84+00.0	36.2' LT.	---	689.44 N	FLARED END SECTION 18" DIA. RCP	705
	10	87+50.0	20.0' RT.	694.61	690.33 W	20	84+40.0	40.9' LT.	---	689.03 S	FLARED END SECTION 18" DIA. RCP	

