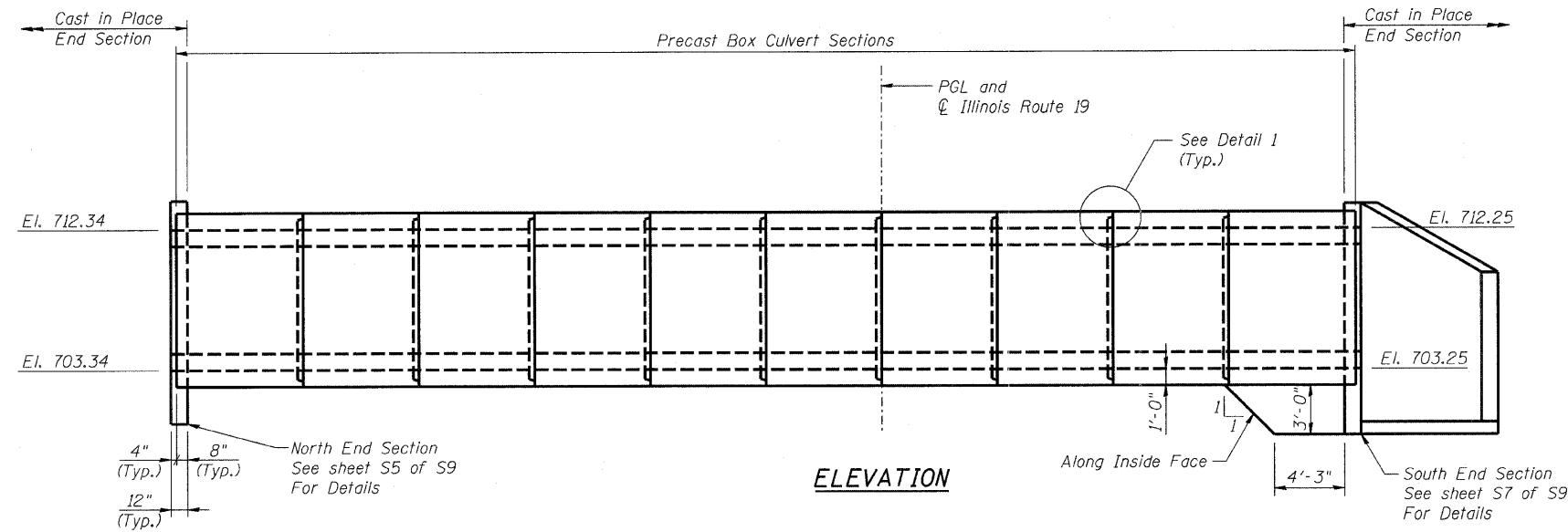
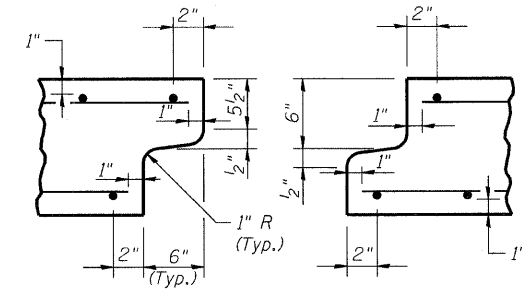


STATE OF ILLINOIS  
DEPARTMENT OF TRANSPORTATION



**ELEVATION**

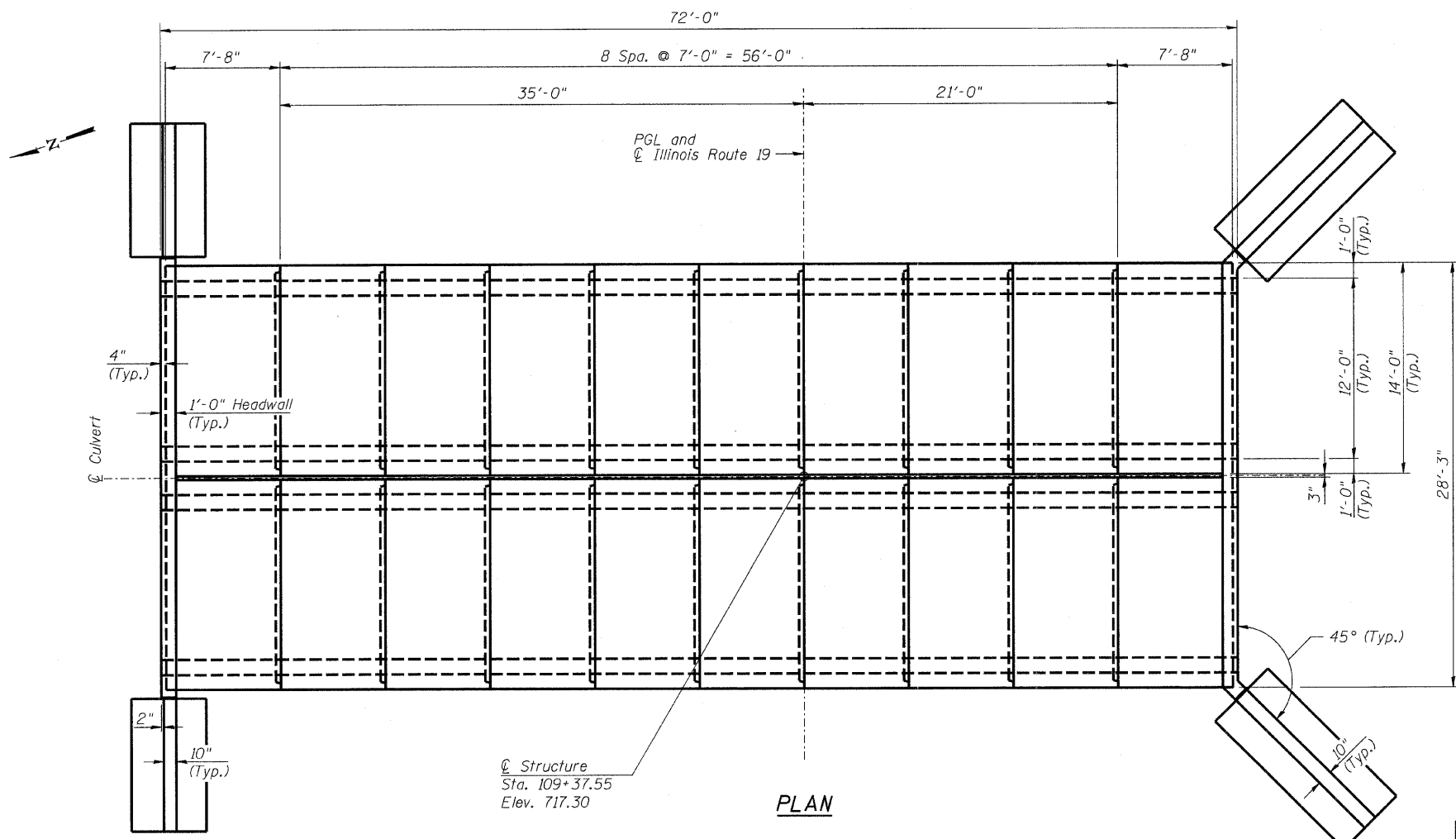


**DETAIL 1**

End Detail is subject to variation by fabricator.

**NOTE:**

Precast Culvert End Details shall have a vertical blunt end (not a "Keyed" end as shown in Detail 1) at the Cast-in-Place End Section Locations only.



**PLAN**

**NOTES:**

For Typical Box Culvert Details see sheet S4 of S9.

**BOX CULVERTS LAYOUT**

<b>COLLINS ENGINEERS</b> DESIGNED: LDB    CHECKED: JMH DATE: 11/25/08    DRAWN: DR		SHEET NO. S3 OF S9 SHEETS	F.A.U. RTE. 1321	SECTION 31T-2	COUNTY DuPAGE	TOTAL SHEETS 59	SHEET NO. 35
		SN: 022-2005		CONTRACT NO. 60A90			
		FED. ROAD DIST. NO. - ILLINOIS FED. AID PROJECT					