

F.A.I. RTE.	SECTION	COUNTY	TOTAL SHEETS	SHEET NO.
39	[62-2;102(1-4);57(2-4)]ITS	*	79	1
		ILLINOIS	CONTRACT NO. 68G20	
* MCLEAN/WOODFORD/MARSHALL				

STATE OF ILLINOIS  
DEPARTMENT OF TRANSPORTATION  
DIVISION OF HIGHWAYS

INDEX OF SHEETS

- 1. COVER SHEET
- 2. CONSTRUCTION NOTES, COMMITMENTS, AND LEGEND
- 3. SUMMARY OF QUANTITIES
- 4.-77. FIBER INSTALLATION ALONG  
I-39 FROM BLOOMINGTON (EXIT 164 - I-55)  
TO WENONA (IL 17)
- 78. BRIDGE CONDUIT BRACKET DETAIL
- 79. TRAFFIC CONTROL DETAIL

PROPOSED  
HIGHWAY PLANS

FAI ROUTE 39 (I-39)  
SECTION [62-2;102(1-4);57(2-4)]ITS  
MCLEAN, WOODFORD AND MARSHALL COUNTIES  
C-94-037-21

ADT: 20,400 (2019)  
HCV: 5800 (28.43%)  
SU: 600 (2.94%)  
MU: 5,200 (25.49%)

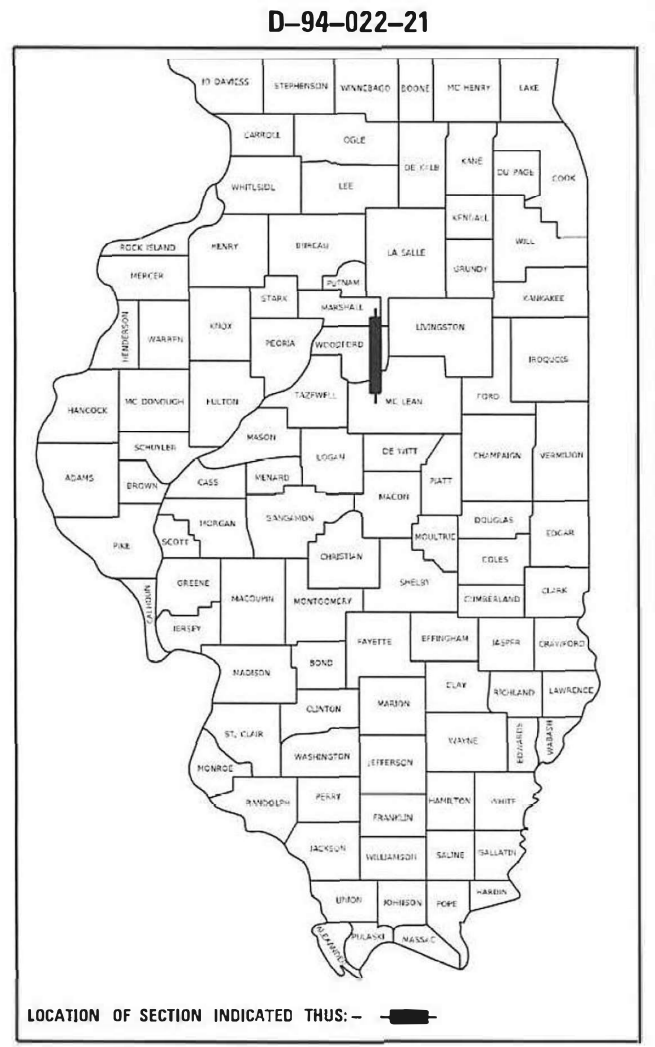
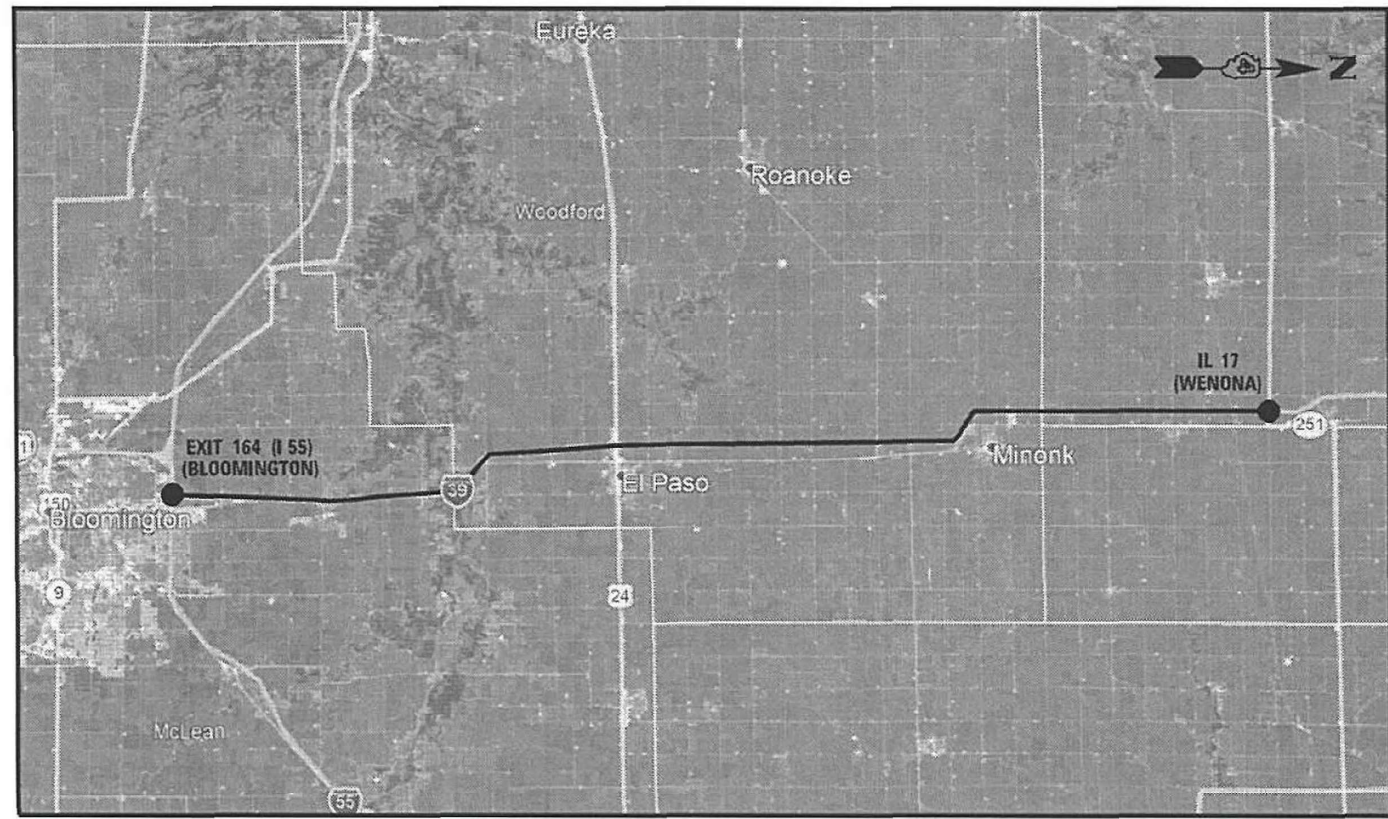
PROJECT DESCRIPTION:  
INSTALLATION OF COMMUNICATIONS DUCT,  
COMMUNICATIONS VAULTS, AND FIBER OPTIC  
CABLE ALONG I-39 FROM BLOOMINGTON  
(EXIT 164 - I-55) TO WENONA (IL 17)

J.U.L.I.E.  
JOINT UTILITY LOCATION INFORMATION FOR EXCAVATION  
1-800-892-0123  
OR 811

PROJECT ENGINEER: ERIC HOWALD (309)-671-4481  
PROJECT MANAGER: BEN TELLEFSON (309)-671-4477

CATALOG NO. 036152-00D  
CONTRACT NO. 68G20

GROSS LENGTH = 185,000 FT. = 35.04 MILES  
NET LENGTH = 185,000 FT. = 35.04 MILES



STATE OF ILLINOIS  
DEPARTMENT OF TRANSPORTATION  
DIVISION OF HIGHWAYS  
SUBMITTED February 4, 2021  
[Signature]  
DEPUTY DIRECTOR OF HIGHWAYS, REGION ENGINEER  
March 19, 2021  
[Signature]  
ENGINEER OF DESIGN AND ENVIRONMENT  
March 19, 2021  
[Signature]  
DIRECTOR OF HIGHWAYS PROJECT IMPLEMENTATION

PRINTED BY THE AUTHORITY  
OF THE STATE OF ILLINOIS

CONSTRUCTION NOTES

1.

EXISTING UTILITY LOCATION INFORMATION IS NOT SHOWN ON THE PLAN SHEETS.THE CONTRACTOR SHALL FIELD VERIFY THE LOCATION OF ALL UTILITIES AND PRIVATELY OWNED FACILITIES PRIOR TO THE INSTALLATION OF ANY COMPONENTS.THE CONTRACTOR SHALL VERIFY EXISTING FIELD CONDITIONS AND TERRAIN PRIOR TO COMMENCING WORK ON THE PROJECT.
2.

THE CONTRACTOR SHALL BE RESPONSIBLE FOR LOCATING EXISTING IDOT ELECTRICAL FACILITIES AT HIS/HER OWN EXPENSE IF REQUIRED.THE CONTRACTOR SHALL ALSO BE LIABLE FOR ANY DAMAGE TO IDOT FACILITIES RESULTING FROM INNACURATE LOCATING.
3.

ELECTRICAL WORK SHALL CONFORM WITH THE NATIONAL, STATE, AND LOCAL CODES.
4.

ALL SURPLUS MATERIALS SHALL BE DISPOSED OF IN ACCORDANCE WITH ARTICLE 202.03 OF THE STANDARD SPECIFICATION.
5.

THE COMMUNICATION VAULT SHALL BE CONSTRUCTED SO THAT THE TOP OF THE FRAME WILL BE FLUSH WITH THE SURFACE OF THE MEDIAN, SIDEWALK, OR GROUND LINE.COMMUNICATION VAULTS SHALL BE INSTALLED AT 4000 FEET MAXIMUM UNLESS OTHERWISE NOTED OR APPROVED BY THE ENGINEER.
6.

THE CONTACTOR WILL BE ALLOWED TO INCREASE THE DISTANCE BETWEEN COMMUNICATION VAULTS AS NEEDED TO OPTIMIZE INSTALLATION AND MAKE ADJUSTMENTS FOR COMMUNICATION DUCT AND FIBER OPTIC CABLE REEL SIZES.THE CONTRACTOR SHALL SUBMIT ALL PROPOSED CHANGES TO THE DEPARTMENT FOR REVIEW PRIOR TO ORDERING MATERIALS.
7.

AFTER INSTALLING THE FIRST THREE MILES OF COMMUNICATION DUCT ALONG WITH COMMUNICATION VAULTS,THE CONTRACTOR SHALL CONDUCT A TEST TO DEMONSTRATE TO THE DEPARTMENT THAT THE PROPOSED COMMUNICATION VAULT SPACING IS OPTIMAL FOR EFFICIENT FIBER INSTALLATION.AS PART OF THE TEST,THE CONTRACTOR SHALL INSTALL FIBER OPTIC CABLE IN THE MICRODUCT ALONG THE ENTIRE THREE MILE DUCT LENGTH.IN THE EVENT THAT THE TEST IS UNSUCCESSFUL,THE CONTRACTOR CAN ADJUST COMMUNICATION VAULT SPACING AS REQUIRED FOR FIBER INSTALLATION.
8.

THE CONTRACTOR SHALL SUBMIT A FIBER SPLICING PLAN TO THE DEPARTMENT FOR REVIEW AND APPROVAL PRIOR TO INSTALLING COMMUNICATIONS DUCT AND FIBER.
9.

FIBER OPTIC CABLE SHALL BE SPLICED TO CREATE A CONTINUOUS LINK THROUGH THE ENTIRE PROJECT LIMITS.ALL FIBERS WITHIN THE CABLE SHALL BE FUSION SPLICED AND ALL SPLICES SHALL BE PROTECTED BY A WEATHERPROOF SPLICE ENCLOSURE.SPLICES SHALL ONLY BE MADE IN COMMUNICATION VAULTS.
10.

THE CONTRACTOR SHALL INSTALL A #12 (XLP-TYPE USE OR THHN) TRACER WIRE ALONG WITH THE FIBER OPTIC CABLE FOR LOCATING PURPOSES.THE TRACER WIRE SHALL BE CONTINUOUS AND ACCESSIBLE FROM THE COMMUNICATION VAULTS.THE COST OF FURNISHING AND INSTALLING THE TRACER WIRE SHALL BE INCLUDED IN THE UNIT BID PRICE FOR THE PAY ITEM "FIBER OPTIC CABLE 96 FIBERS, SINGLE MODE".AT THE CONTRACTOR'S OPTION,THE CONTRACTOR MAY ELECT TO UTILIZE COMMUNICATION DUCT THAT CONTAINS AN INTEGRATED WIRE THAT CAN BE USED FOR UNDERGROUND LOCATING PURPOSES.
11.

ALL COMMUNICATIONS DUCT SHALL BE INSTALLED IN AND WILL BE PAID FOR IN ACCORDANCE WITH SECTION 810 "UNDERGROUND RACEWAYS" OF THE STANDARD SPECIFICATIONS.
12.

THE LOCATION OF THE PROPOSED CONDUIT AS SHOWN ON THE PLAN SHEETS IS APPROXIMATE AND NOT DRAWN TO SCALE.CONDUIT INSTALLED ALONG THE INTERSTATE AND ROADWAYS SHALL BE LOCATED A MAXIMUM OF 10 FEET FROM THE EDGE OF THE R.O.W. UNLESS DIRECTED OTHERWISE BY THE RESIDENT ENGINEER.THE CONDUIT SHALL BE INSTALLED AT A 36" MINIMUM DEPTH EXCEPT WHEN CROSSING WATERWAYS AND DRAINAGE FLOW LINES WHERE IT SHALL BE INSTALLED AT 60".
13.

THE COST OF ROCK EXCAVATION, ROCK DISPOSAL, AND THE COST OF INSTALLING CONDUIT THROUGH ROCKY TERRAIN (TRENCHING, BORING, SAW-CUTTING, AND OTHER INSTALLATION METHODS AS REQUIRED) SHALL BE INCLUDED IN THE PAY ITEM "UNDERGROUND CONDUIT, MULTI-DUCT, 7-16MM MICRODUCTS".THERE WILL BE NO ADDITIONAL COMPENSATION FOR THIS WORK.
14.

THE PLAN SHEETS IDENTIFY AREAS WHERE COMMUNICATION DUCT WILL NEED TO BE DIRECTIONALLY BORED UNDER ROADWAYS, RAMPS, AND STRUCTURES.THE DEPARTMENT HAS ATTEMPTED TO IDENTIFY THESE AREAS AS ACCURATELY AS POSSIBLE BY UTILIZING ALL AVAILABLE INFORMATION.THE CONTRACTOR SHALL BE RESPONSIBLE FOR VERIFYING ALL FIELD CONDITIONS PRIOR TO BIDDING.THIS INFORMATION HAS BEEN PROVIDED FOR REFERENCE ONLY AND THERE WILL BE NO ADDITIONAL COMPENSATION FOR ERRORS OR OMISSIONS.
15.

POTHOLING TO LOCATE EXISTING UNDERGROUND UTILITIES SHALL BE INCLUDED IN THE CONTRACT BID PRICE FOR THE COMMUNICATION DUCT PAY ITEM.
16.

REMOVAL AND REPLACEMENT OF EXISTING SIDEWALK, PAVEMENT, AND ISLANDS FOR UTILITY LOCATING PURPOSES WILL NOT BE PAID FOR SEPARATELY,BUT SHALL BE INCLUDED IN THE CONTRACT BID PRICE FOR THE COMMUNICATION DUCT PAY ITEM.
17.

NO ADDITIONAL COMPENSATION SHALL BE ALLOWED FOR PLACING CONDUIT AT GREATER THAN THE REQUIRED MINIMUM DEPTH TO AVOID OBSTACLES SUCH AS UNDERGROUND UTILITIES.
18.

THE CONTRATOR IS RESPONSIBLE FOR THE COST OF UNCOVERING OR HAND DIGGING AROUND UTILITIES AS NECESSARY.THE COST OF THIS WORK SHALL BE INCLUDED IN THE UNIT BID PRICE FOR THE COMMUNICATIONS DUCT.
19.

THE CONTRACTOR SHALL FURNISH AND INSTALL ALL ITEMS REQUIRED TO ATTACH THE CONDUITS AND JUNCTION BOXES TO THE STRUCTURE,INCLUDING,BUT NOT LIMITED TO UNI-STRUT, BRACKETS, SEAL-TITE, LBS, FITTINGS, HARDWARE, AND OTHER MISCELLANEOUS ITEMS.THESE ITEMS WILL NOT BE PAID FOR SEPARATELY,BUT SHALL BE INCLUDED IN THE BID PRICE FOR THE CONDUIT ATTACHED TO STRUCTURE PAY ITEM.
20.

CONDUIT ATTACHMENT BRACKETS SHALL BE INSTALLED AT 8 FEET SPACINGS (MAXIMUM) ON STRUCTURES.
21.

THE CONTRACTOR SHALL FURNISH AND INSTALL EXPANSION/DEFLECTION COUPLINGS (OR OTHER EQUIPMENT AND METHODS AS APPROVED BY THE ENGINEER) FOR ALL BRIDGE JOINTS AS REQUIRED AND DIRECTED BY THE ENGINEER.
22.

THE CONTRACTOR SHALL SUBMIT A COMPLETE PACKAGE (INCLUDING CONDUIT BRACKETS, HARDWARE, ATTACHMENT POINTS, ATTACHMENT METHODS, ETC.) TO THE DEPARTMENT FOR REVIEW AND SUBSEQUENT APPROVAL PRIOR TO COMMENCING WORK.
23.

ALL SEAL-TITE CONDUIT SHALL BE NON-METALLIC AND SHALL INCLUDE CONNECTORS WITH INTEGRAL STAINLESS STEEL KELLUM GRIPS AT THE ENDS FOR INCREASED STRENGTH AND DURABILITY.
24.

ALL CONDUIT ATTACHMENT BRACKETSAND HARDWARE SHALL BE STAINLESS STEEL.
25.

THE CONTRACTOR SHALL INSTALL THREAD LOCKER ON ALL ATTACHED CONDUIT THREADED CONNECTIONS TO PREVENT LOOSENING THROUGH VIBRATION.
26.

THE CONTRACTOR SHALL BE RESPONSIBLE FOR LOCATING FIELD TILE, UNDERDRAIN, AND DRAINAGE STRUCTURE LOCATIONS.THE CONTRACTOR SHALL MAKE AN EFFORT TO MINIMIZE DAMAGE TO THESE FACILITIES DURING THE INSTALLATION OF CONDUIT AND COMMUNICATION VAULTS.IN THE EVENT THAT THESE FACILITIES ARE DAMAGED,THE CONTRACTOR SHALL BE RESPONSIBLE FOR MAKING REPAIRS TO THESE ITEMS TO RESTORE FUNCTIONALITY TO THE SATISFACTION OF THE ENGINEER.
27.

THE CONTRACTOR SHALL BE RESPONSIBLE FOR ANY MOWING,BRUSH AND SHRUB REMOVAL IF REQUIRED TO INSTALL THE PROPOSED CONDUIT AND COMMUNICATIONS VAULTS.THE CONTRACTOR SHALL DISPOSE OF ALL REMOVED ITEMS OFF OF THE JOB SITE.THE COST OF THIS WORK SHALL BE INCLUDED IN THE BID PRICES FOR THE COMMUNICATION DUCT PAY ITEM.
28.

THE CONTRACTOR SHALL PLAN AND CONDUCT CONDUIT AND FIBER INSTALLATION OPERATIONS TO MINIMIZE THE NUMBER OF INTERSTATE AND ROAD LANE CLOSURES AND TO MINIMIZE TRAFFIC DISRUPTIONS AND DELAYS FOR THE MOTORING PUBLIC.
29.

THE CONTRACTOR SHALL OBTAIN ALL PERMITS REQUIRED FOR INSTALLING COMMUNICATIONS DUCT AND COMMUNICATION VAULTS UNDER AND ALONG COUNTY AND TOWNSHIP ROADWAYS.
30.

CONDUIT ATTACHED TO STRUCTURE SHALL BE INSTALLED ON THE BACK OF THE OUTSIDE BRIDGE PARAPET WALL. THE CONDUIT SHALL BE LOCATED A MINIMUM OF 18 INCHES FROM THE TOP OF THE PARAPET. THE CONTRACTOR SHALL SUBMIT A DETAILED CONDUIT ATTACHMENT PLAN TO THE DEPARTMENT FOR REVIEW AND APPROVAL PRIOR TO ORDERING MATERIALS.


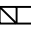
COMMITMENTS

Commitments are not to be altered without the written approval of all parties to which the commitment was made.

NO COMMITMENTS HAVE BEEN MADE ON THIS PROJECT.

HIGHWAY STANDARDS

701001-02  
701006-05  
701011-04  
701101-05  
701106-02  
701400-10  
701406-12  
701456-05  
701901-08

LEGEND			
---	UNDERGROUND CONDUIT, MULTI-DUCT, 7-16MM MICRODUCTS	---	3" GALVANIZED STEEL CONDUIT ATTACHED TO STRUCTURE
	UNDERGROUND CONDUIT, MULTI-DUCT, 7-16MM MICRODUCTS (PUSHED UNDER ROADWAYS, STRUCTURES, ETC.)		24" X 24" X 10" STAINLESS STEEL JUNCTION BOX ATTACHED TO STRUCTURE
----			COMMUNICATIONS VAULT

FIBER OPTIC SLACK CABLE	
LOCATION	SLACK LENGTH
COMMUNICATIONS VAULT	200 FT
JUNCTION BOX	10 FT

MODEL: Default  
FILE NAME: C:\Users\howalder\Desktop\New folder\Conduit\_plan4130.dgn

* MCLEAN/WOODFORD/MARSHALL													
	USER NAME = howalder	DESIGNED -	REVISED -	STATE OF ILLINOIS DEPARTMENT OF TRANSPORTATION	CONSTRUCTION NOTES, COMMITMENTS, AND LEGEND				F.A.I. RTE.	SECTION	COUNTY	TOTAL SHEETS	SHEET NO.
		DRAWN -	REVISED -						39	[62-2]102(1-4)57(2-4)ITS	*	79	2
	PLOT SCALE = 160.0000 ' / in.	CHECKED -	REVISED -						CONTRACT NO. 68G20				
	PLOT DATE = 2/5/2021	DATE -	REVISED -		NOT TO SCALE	SHEET 2	OF 79 SHEETS						
								ILLINOIS FED. AID PROJECT					

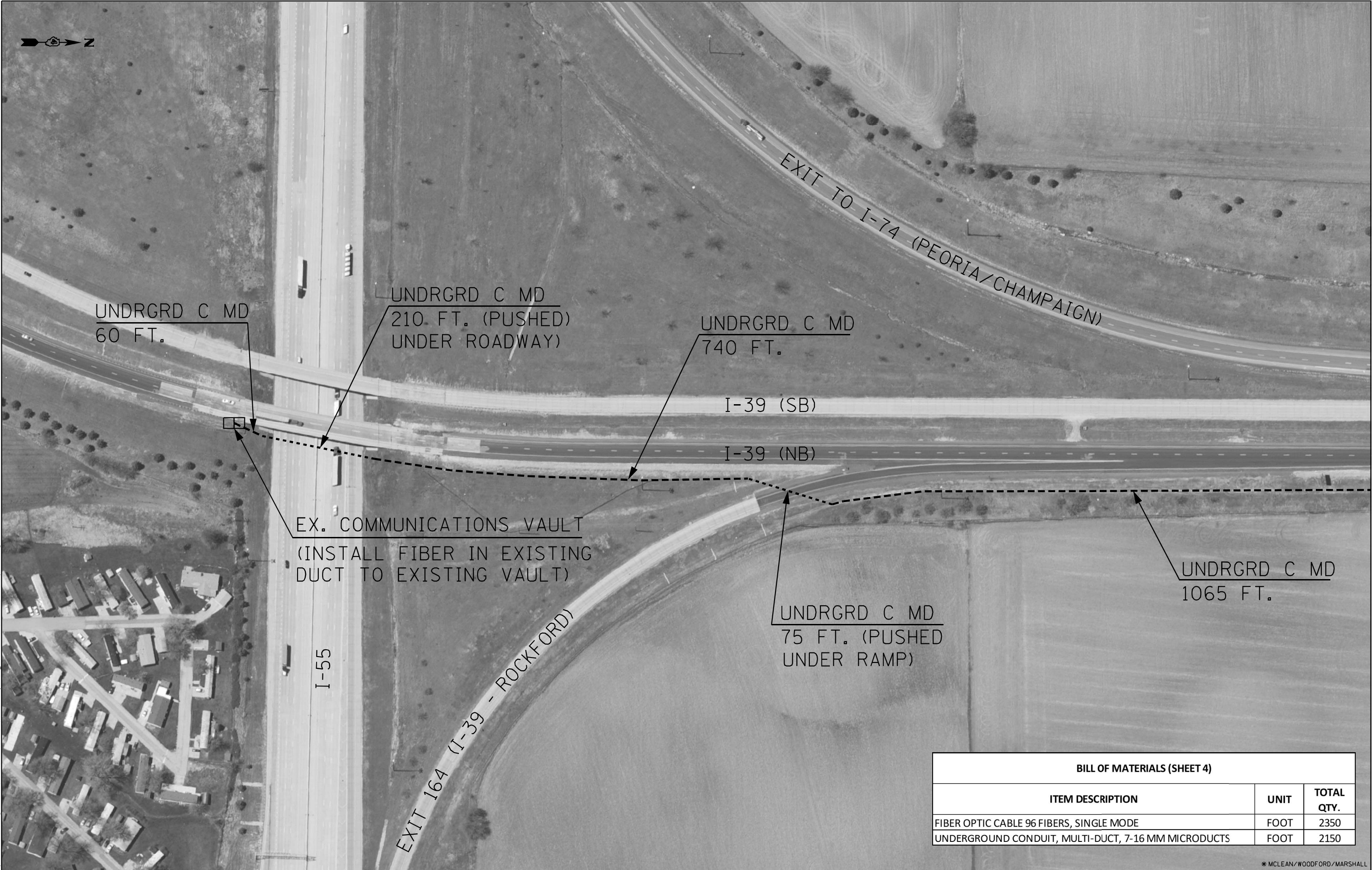


MODEL: Default  
FILE NAME: C:\Users\howalder\Desktop\New folder\Conduit\_plan4130.dgn

				MCLEAN COUNTY		WOODFORD COUNTY	MARSHALL COUNTY
CODE NO.	ITEM DESCRIPTION	UNIT	TOTAL QUANTITY	CONST. TYPE CODE 0021 100% STATE BROADBAND FIBER PROGRAM FUNDS URBAN	CONST. TYPE CODE 0021 100% STATE BROADBAND FIBER PROGRAM FUNDS RURAL	CONST. TYPE CODE 0021 100% STATE BROADBAND FIBER PROGRAM FUNDS RURAL	CONST. TYPE CODE 0021 100% STATE BROADBAND FIBER PROGRAM FUNDS RURAL
67100100	MOBILIZATION	L SUM	1	0.06	0.19	0.55	0.20
81300948	JUNCTION BOX, STAINLESS STEEL, ATTACHED TO STRUCTURE, 24" X 24" X 10"	EACH	4			2	2
X7010216	TRAFFIC CONTROL AND PROTECTION, (SPECIAL)	L SUM	1	0.06	0.19	0.55	0.20
X8101100	UNDERGROUND CONDUIT, MULTI-DUCT, 7-16MM MICRODUCTS	FOOT	185290	11075	35560	101085	37570
X8110462	CONDUIT ATTACHED TO STRUCTURE, 3" DIA., STAINLESS STEEL	FOOT	705			500	205
X8710035	FIBER OPTIC CABLE 96 FIBERS, SINGLE MODE	FOOT	194730	11775	37260	106205	39490
Z0033052	COMMUNICATIONS VAULT	EACH	47	3	8	26	10
Z0048665	RAILROAD PROTECTIVE LIABILITY INSURANCE	L SUM	1			0.5	0.5

\* MCLEAN/WOODFORD/MARSHALL

	USER NAME = howalder	DESIGNED -	REVISED -	STATE OF ILLINOIS DEPARTMENT OF TRANSPORTATION	SUMMARY OF QUANTITIES			F.A.I. RTE.	SECTION	COUNTY	TOTAL SHEETS	SHEET NO.
		DRAWN -	REVISED -					39	[62-2]102(1-4)57(2-4)ITS	*	79	3
	PLOT SCALE = 160.0000' / in.	CHECKED -	REVISED -					CONTRACT NO. 68C20				
	PLOT DATE = 2/3/2021	DATE -	REVISED -		NOT TO SCALE	SHEET 3	OF 79 SHEETS	ILLINOIS FED. AID PROJECT				



BILL OF MATERIALS (SHEET 4)		
ITEM DESCRIPTION	UNIT	TOTAL QTY.
FIBER OPTIC CABLE 96 FIBERS, SINGLE MODE	FOOT	2350
UNDERGROUND CONDUIT, MULTI-DUCT, 7-16 MM MICRODUCTS	FOOT	2150

\* MCLEAN/WOODFORD/MARSHALL

MODEL: Default  
FILE NAME: s:\projects\68g20\68g20.dwg  
PROJECT: I-39 (FROM BLOOMINGTON TO WENONA) CONTINUED  
SHEET: 4 OF 79  
DATE: 2/3/2021

USER NAME = bourisba	DESIGNED -	REVISED -
PLOT SCALE = 1/8" = 100'	DRAWN -	REVISED -
PLOT DATE = 2/3/2021	CHECKED -	REVISED -
	DATE -	REVISED -

STATE OF ILLINOIS  
DEPARTMENT OF TRANSPORTATION

FIBER OPTIC CONDUIT AND CABLE PROJECT I-39 (FROM BLOOMINGTON TO WENONA) CONTINUED		
NOT TO SCALE	SHEET 4	OF 79 SHEETS

F.A.I. RTE.	SECTION	COUNTY	TOTAL SHEETS	SHEET NO.
39	[62-2];102(1-4);57(2-4)ITS	*	79	4
CONTRACT NO. 68G20				
ILLINOIS FED. AID PROJECT				



MODEL: Default  
FILE NAME: s:\projects\ammonia.dot\illinois\pwr\DOT Documents\DOT Office\District 4\Projects\DL\_68GXX\CAD\Drawings\CD\Sheet5\Consult.dgn  
4/13/2021

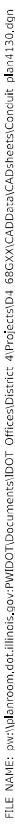


BILL OF MATERIALS (SHEET 5)		
ITEM DESCRIPTION	UNIT	TOTAL QTY.
FIBER OPTIC CABLE 96 FIBERS, SINGLE MODE	FOOT	2730
UNDERGROUND CONDUIT, MULTI-DUCT, 7-16 MM MICRODUCTS	FOOT	2530
COMMUNICATIONS VAULT	EACH	1

\* MCLEAN/WOODFORD/MARSHALL

	USER NAME = bourisba	DESIGNED -	REVISED -	STATE OF ILLINOIS DEPARTMENT OF TRANSPORTATION	FIBER OPTIC CONDUIT AND CABLE PROJECT I-39 (FROM BLOOMINGTON TO WENONA) CONTINUED	NOT TO SCALE	SHEET 5	OF	79 SHEETS	STA.	TO STA.	F.A.I. RTE.	SECTION	COUNTY	TOTAL SHEETS	SHEET NO.
	PLOT SCALE = 160,0000 ' / in.	DRAWN -	REVISED -									39	[62-2);102(1-4);57(2-4)]ITS	*	79	5
	PLOT DATE = 2/3/2021	CHECKED -	REVISED -									CONTRACT NO. 68G20				
		DATE -	REVISED -									ILLINOIS FED. AID PROJECT				





I-39 (NB)

EXIT 2

UNDRGRD C MD  
2485 FT.

UNDRGRD C MD  
90 FT. (PUSHED  
UNDER RAMP)

BILL OF MATERIALS (SHEET 6)		
ITEM DESCRIPTION	UNIT	TOTAL QTY.
FIBER OPTIC CABLE 96 FIBERS, SINGLE MODE	FOOT	2575
UNDERGROUND CONDUIT, MULTI-DUCT, 7-16 MM MICRODUCTS	FOOT	2575

\* MCLEAN/WOODFORD/MARSHALL

FILE NAME: D:\01-2012\01-2012.DWG	USER NAME = bourisba	DESIGNED -	REVISED -	STATE OF ILLINOIS DEPARTMENT OF TRANSPORTATION	FIBER OPTIC CONDUIT AND CABLE PROJECT I-39 (FROM BLOOMINGTON TO WENONA) CONTINUED				F.A.I. RTE.	SECTION	COUNTY	TOTAL SHEETS	SHEET NO.
		DRAWN -	REVISED -						39	[62-2]:102[1-4]:57[2-4]JITS	*	79	6
	PLOT SCALE = 160,000' / in.	CHECKED -	REVISED -		CONTRACT NO. 68G20								
	PLOT DATE = 2/3/2021	DATE -	REVISED -										
					NOT TO SCALE	SHEET 6	OF	79 SHEETS	ILLINOIS FED. AID PROJECT				



UNDRGRD C MD  
220 FT.

\* MCLEAN/WOODFORD/MARSHALL

F.A.I. RTE.	SECTION	COUNTY	TOTAL SHEETS	SHEET NO.
39	[62-2];102(1-4);57(2-4)]ITS	*	79	7
		CONTRACT NO. 68G20		
		ILLINOIS FED. AID PROJECT		





I-39 (NB)

UNDRGRD C MD  
2450 FT.

UNDRGRD C MD  
70 FT.

COMMUNICATIONS VAULT  
1.0 EACH

BILL OF MATERIALS (SHEET 8)		
ITEM DESCRIPTION	UNIT	TOTAL QTY.
FIBER OPTIC CABLE 96 FIBERS, SINGLE MODE	FOOT	2720
UNDERGROUND CONDUIT, MULTI-DUCT, 7-16 MM MICRODUCTS	FOOT	2520
COMMUNICATIONS VAULT	EACH	1

\* MCLEAN/WOODFORD/MARSHALL

FILE NAME: DWG	USER NAME = bourisba	DESIGNED -	REVISED -	STATE OF ILLINOIS DEPARTMENT OF TRANSPORTATION	FIBER OPTIC CONDUIT AND CABLE PROJECT I-39 (FROM BLOOMINGTON TO WENONA) CONTINUED				F.A.I. RTE.	SECTION	COUNTY	TOTAL SHEETS	SHEET NO.
		DRAWN -	REVISED -						39	[62-2];102(1-4);57(2-4)]ITS	*	79	8
	PLOT SCALE = 160,0000 ' / in.	CHECKED -	REVISED -						CONTRACT NO. 68G20				
	PLOT DATE = 2/3/2021	DATE -	REVISED -		NOT TO SCALE	SHEET 8	OF 79 SHEETS			ILLINOIS FED. AID PROJECT			



MODEL: Default  
FILE: \\nrcs-001\pub\ammon\dot\illinois\gov\PIWIDOT\Documents\DOT Office\District 4\Projects\DL\_68GXX\CADD\sta\Cable\Sheet\Conduit.dgn 11/30/2021



BILL OF MATERIALS (SHEET 9)		
ITEM DESCRIPTION	UNIT	TOTAL QTY.
FIBER OPTIC CABLE 96 FIBERS, SINGLE MODE	FOOT	2525
UNDERGROUND CONDUIT, MULTI-DUCT, 7-16 MM MICRODUCTS	FOOT	2525

\* MCLEAN/ WOODFORD/ MARSHALL

	USER NAME = bourisba	DESIGNED -	REVISED -	STATE OF ILLINOIS DEPARTMENT OF TRANSPORTATION	FIBER OPTIC CONDUIT AND CABLE PROJECT I-39 (FROM BLOOMINGTON TO WENONA) CONTINUED	NOT TO SCALE	SHEET 9 OF 79 SHEETS	F.A.I. RTE.:	SECTION	COUNTY	TOTAL SHEETS	SHEET NO.
	PLOT SCALE = 160,0000 ' / in.	DRAWN -	REVISED -					39	[62-2];102(1-4);57(2-4)]ITS	*	79	9
	PLOT DATE = 2/3/2021	CHECKED -	REVISED -					CONTRACT NO. 68G20				
		DATE -	REVISED -					ILLINOIS FED. AID PROJECT				

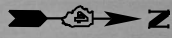


\* MCLEAN/WOODFORD/MARSHALL

	USER NAME = bourlaba	DESIGNED -	REVISED -	STATE OF ILLINOIS DEPARTMENT OF TRANSPORTATION	FIBER OPTIC CONDUIT AND CABLE PROJECT I-39 (FROM BLOOMINGTON TO WENONA) CONTINUED			F.A.I. RTE.	SECTION	COUNTY	TOTAL SHEETS	SHEET NO.
	PLOT SCALE = 160,000' / in.	DRAWN -	REVISED -					39	[62-2]; 102(1-4); 57(2-4) JTS	*	79	10
	PLOT DATE = 2/3/2021	CHECKED -	REVISED -		CONTRACT NO. 68G20							
		DATE -	REVISED -		NOT TO SCALE	SHEET 10 OF 79 SHEETS	ILLINOIS FED. AID PROJECT					



MODEL: Default  
FILE: \\miller\c:\projects\68g20\68g20.dwg  
PROJECT: I-39 (FROM BLOOMINGTON TO WENONA) CONTINUED  
SHEET: 11 OF 79  
DATE: 2/3/2021



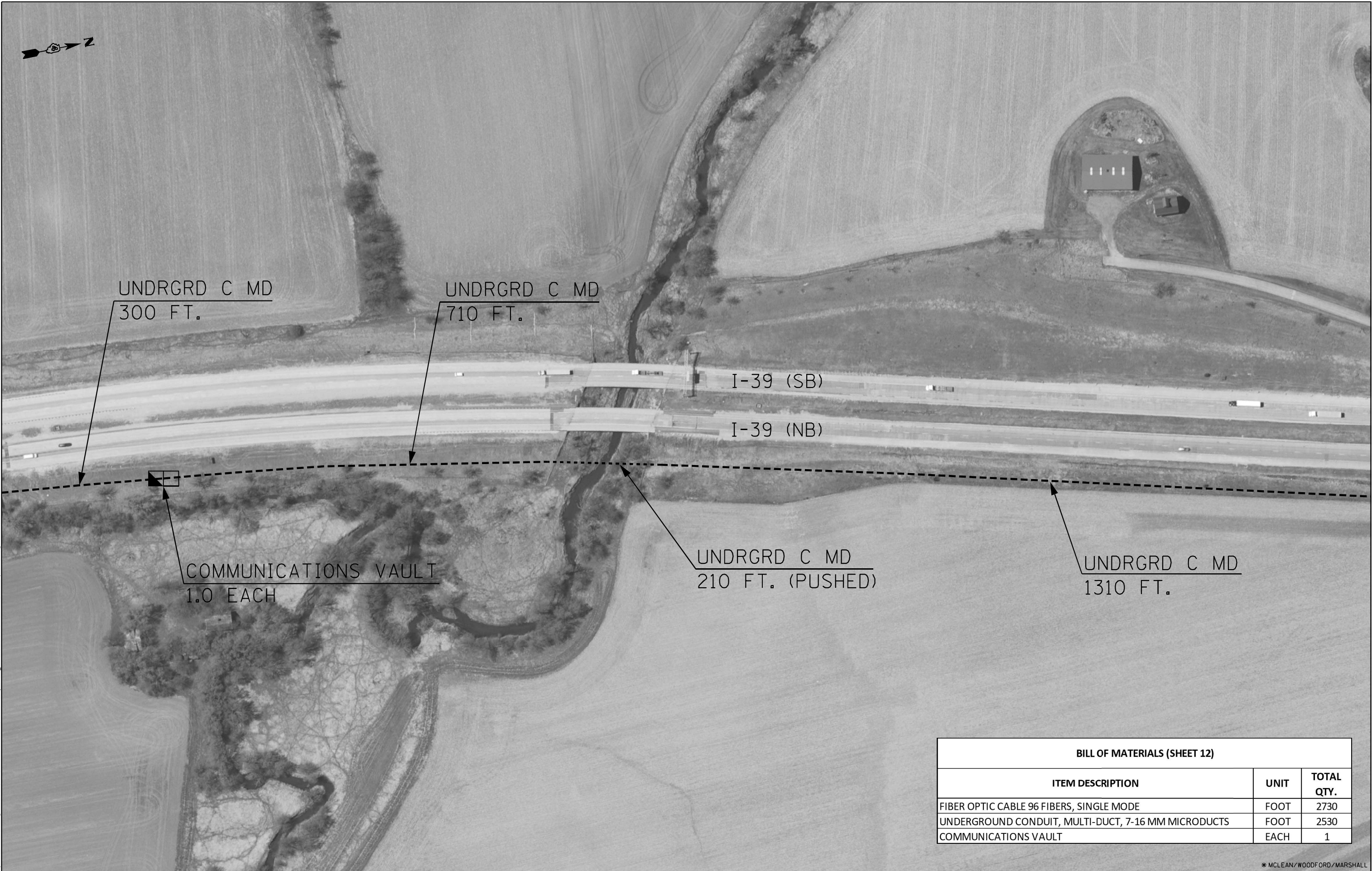
BILL OF MATERIALS (SHEET 11)		
ITEM DESCRIPTION	UNIT	TOTAL QTY.
FIBER OPTIC CABLE 96 FIBERS, SINGLE MODE	FOOT	2530
UNDERGROUND CONDUIT, MULTI-DUCT, 7-16 MM MICRODUCTS	FOOT	2530

\* MCLEAN/WOODFORD/MARSHALL

MODEL: Default.dwg FILE NAME: 0000	USER NAME = bourisba	DESIGNED -	REVISED -	STATE OF ILLINOIS DEPARTMENT OF TRANSPORTATION	FIBER OPTIC CONDUIT AND CABLE PROJECT I-39 (FROM BLOOMINGTON TO WENONA) CONTINUED				F.A.I. RTE.:	SECTION	COUNTY	TOTAL SHEETS	SHEET NO.
		DRAWN -	REVISED -						39	[62-2];102(1-4);57(2-4)]ITS	*	79	11
	PLOT SCALE = 160,0000 ' / in.	CHECKED -	REVISED -		CONTRACT NO. 68G20								
	PLOT DATE = 2/3/2021	DATE -	REVISED -										
						NOT TO SCALE	SHEET 11	OF	79 SHEETS				



MODEL: Default  
FILE NAME: s:\projects\amnona.dot\illinois\pww\DOT\Documents\IBOT\Office\District 4\Projects\DU\_68GXX\CAD\Drawings\Conduit.dwg  
PLOT DATE: 2/3/2021



BILL OF MATERIALS (SHEET 12)			
ITEM DESCRIPTION	UNIT	TOTAL QTY.	
FIBER OPTIC CABLE 96 FIBERS, SINGLE MODE	FOOT	2730	
UNDERGROUND CONDUIT, MULTI-DUCT, 7-16 MM MICRODUCTS	FOOT	2530	
COMMUNICATIONS VAULT	EACH	1	

\* MCLEAN/WOODFORD/MARSHALL

	USER NAME = bourisba	DESIGNED -	REVISED -	STATE OF ILLINOIS DEPARTMENT OF TRANSPORTATION	FIBER OPTIC CONDUIT AND CABLE PROJECT I-39 (FROM BLOOMINGTON TO WENONA) CONTINUED	NOT TO SCALE	SHEET 12 OF 79 SHEETS		F.A.I. RTE. = 39	SECTION = [62-2];102(1-4);57(2-4)]ITS	COUNTY = *	TOTAL SHEETS = 79	SHEET NO. = 12
	PLOT SCALE = 160,0000 ' / in.	CHECKED -	REVISED -						CONTRACT NO. 68G20				
	PLOT DATE = 2/3/2021	DATE -	REVISED -						ILLINOIS FED. AID PROJECT				

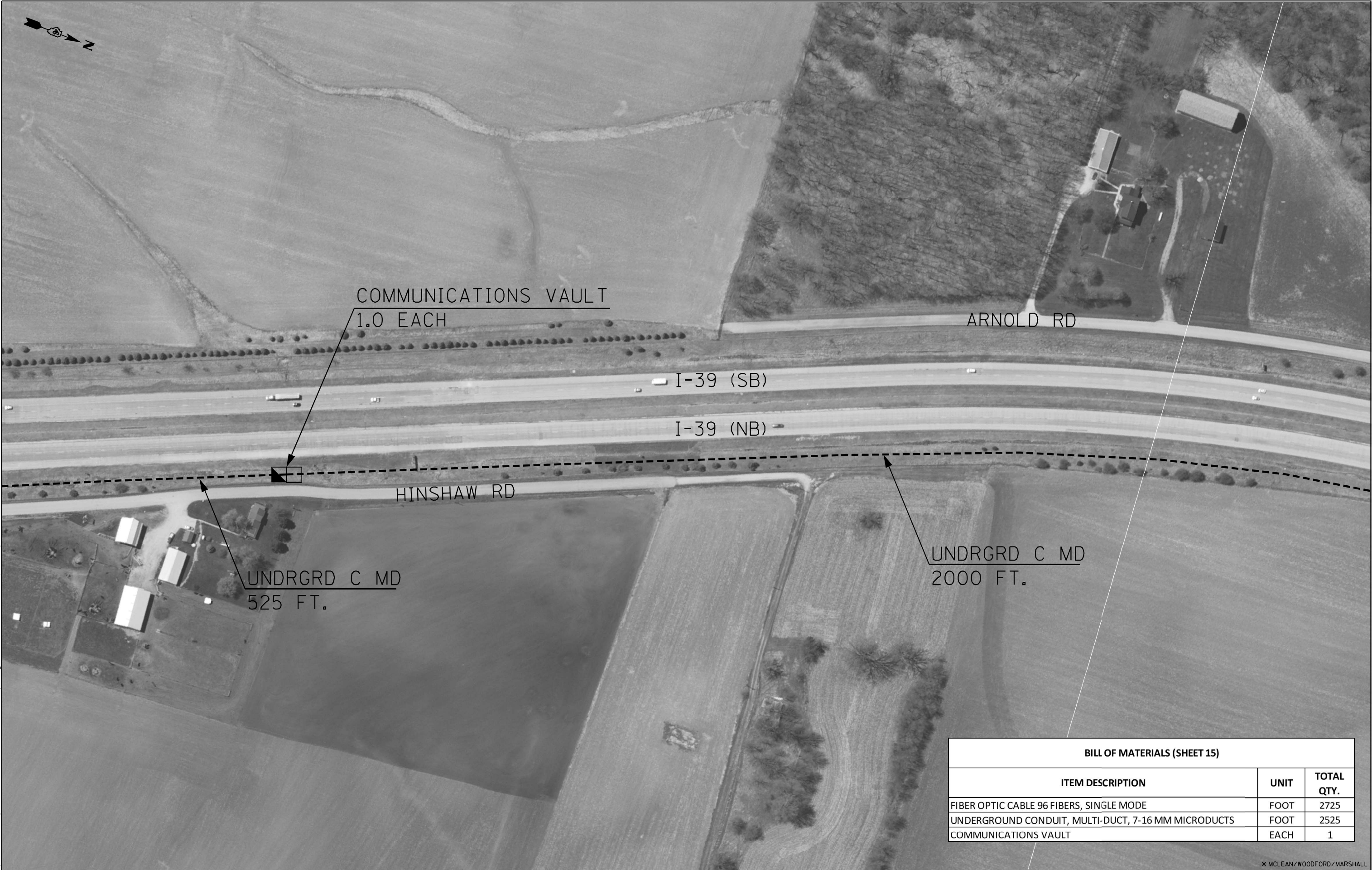












BILL OF MATERIALS (SHEET 15)		
ITEM DESCRIPTION	UNIT	TOTAL QTY.
FIBER OPTIC CABLE 96 FIBERS, SINGLE MODE	FOOT	2725
UNDERGROUND CONDUIT, MULTI-DUCT, 7-16 MM MICRODUCTS	FOOT	2525
COMMUNICATIONS VAULT	EACH	1

\* MCLEAN/ WOODFORD/ MARSHALL

	USER NAME = bourisba	DESIGNED -	REVISED -	STATE OF ILLINOIS DEPARTMENT OF TRANSPORTATION	FIBER OPTIC CONDUIT AND CABLE PROJECT I-39 (FROM BLOOMINGTON TO WENONA) CONTINUED			F.A.I. RTE.	SECTION	COUNTY	TOTAL SHEETS	SHEET NO.
		DRAWN -	REVISED -					39	[62-2];102(1-4);57(2-4)]ITS	*	79	15
	PLOT SCALE = 160,0000 ' / in.	CHECKED -	REVISED -					CONTRACT NO. 68G20				
	PLOT DATE = 2/3/2021	DATE -	REVISED -					ILLINOIS FED. AID PROJECT				
						NOT TO SCALE	SHEET 15	OF 79 SHEETS				









I-39 (NB)

UNDRGRD C MD  
2520 FT.

\* MCLEAN/WOODFORD/MARSHALL

FILE NAME: D:\PROJECTS\2021\11-23-2021\11-23-2021.DWG	USER NAME = bourisba	DESIGNED -	REVISED -	STATE OF ILLINOIS DEPARTMENT OF TRANSPORTATION	FIBER OPTIC CONDUIT AND CABLE PROJECT I-39 (FROM BLOOMINGTON TO WENONA) CONTINUED				F.A.I. RTE.	SECTION	COUNTY	TOTAL SHEETS	SHEET NO.
		DRAWN -	REVISED -						39	[62-2];102(1-4);57(2-4))ITS	*	79	17
	PLOT SCALE = 160,0000 ' / in.	CHECKED -	REVISED -		NOT TO SCALE				SHEET 17	OF 79 SHEETS	CONTRACT NO. 68G20		
	PLOT DATE = 2/3/2021	DATE -	REVISED -						ILLINOIS		FED. AID PROJECT		

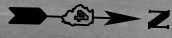


\* MCLEAN/WOODFORD/MARSHALL

	USER NAME = bourisba	DESIGNED -	REVISED -	STATE OF ILLINOIS DEPARTMENT OF TRANSPORTATION	FIBER OPTIC CONDUIT AND CABLE PROJECT I-39 (FROM BLOOMINGTON TO WENONA) CONTINUED			F.A.I. RTE.	SECTION	COUNTY	TOTAL SHEETS	SHEET NO.
	PLOT SCALE = 160,000' / in.	DRAWN -	REVISED -					39	[62-2);102(1-4);57(2-4)]ITS	*	79	18
	PLOT DATE = 2/3/2021	CHECKED -	REVISED -		CONTRACT NO. 68G20							
		DATE -	REVISED -		NOT TO SCALE	SHEET 18 OF 79 SHEETS	ILLINOIS FED. AID PROJECT					



MODEL: Default  
FILE: \\miller\p\projects\dot\illinois\dot\p\w\dot\Documents\DOT Office\District 4\Projects\DL\_68GXXCADD\taCAD\heest\Consult\_dba\1130.dgn



BILL OF MATERIALS (SHEET 19)		
ITEM DESCRIPTION	UNIT	TOTAL QTY.
FIBER OPTIC CABLE 96 FIBERS, SINGLE MODE	FOOT	2720
UNDERGROUND CONDUIT, MULTI-DUCT, 7-16 MM MICRODUCTS	FOOT	2520
COMMUNICATIONS VAULT	EACH	1

\* MCLEAN/WOODFORD/MARSHALL

	USER NAME = bourisba	DESIGNED -	REVISED -	STATE OF ILLINOIS DEPARTMENT OF TRANSPORTATION	FIBER OPTIC CONDUIT AND CABLE PROJECT I-39 (FROM BLOOMINGTON TO WENONA) CONTINUED	NOT TO SCALE	SHEET 19 OF 79 SHEETS	F.A.I. RTE. SECTION COUNTY			TOTAL SHEETS	SHEET NO.
	PLOT SCALE = 160,0000 ' / in.	DRAWN -	REVISED -					39	[62-2);102(1-4);57(2-4)]ITS	*	79	19
	PLOT DATE = 2/3/2021	CHECKED -	REVISED -					CONTRACT NO. 68G20				
		DATE -	REVISED -					ILLINOIS FED. AID PROJECT				



MODEL: Default  
FILE NAME: s:\projects\2021\68GXXCAD\Drawings\DOT Office\District 4\Projects\2021\68GXXCAD\Drawings\Conduit.dgn  
DATE: 2/3/2021



BILL OF MATERIALS (SHEET 20)		
ITEM DESCRIPTION	UNIT	TOTAL QTY.
FIBER OPTIC CABLE 96 FIBERS, SINGLE MODE	FOOT	2600
UNDERGROUND CONDUIT, MULTI-DUCT, 7-16 MM MICRODUCTS	FOOT	2600

\* MCLEAN/WOODFORD/MARSHALL

	USER NAME = bourisba	DESIGNED -	REVISED -	STATE OF ILLINOIS DEPARTMENT OF TRANSPORTATION	FIBER OPTIC CONDUIT AND CABLE PROJECT I-39 (FROM BLOOMINGTON TO WENONA) CONTINUED			F.A.I. RTE.	SECTION	COUNTY	TOTAL SHEETS	SHEET NO.
		DRAWN -	REVISED -					39	[62-2];102(1-4);57(2-4)]ITS	*	79	20
	PLOT SCALE = 160,0000 ' / in.	CHECKED -	REVISED -		CONTRACT NO. 68G20							
	PLOT DATE = 2/3/2021	DATE -	REVISED -									
						NOT TO SCALE	SHEET 20	OF 79 SHEETS				



MODEL: Default  
FILE NAME: s:\projects\68g20\68g20.dwg  
PROJECT: I-39 (FROM BLOOMINGTON TO WENONA) CONTINUED  
SHEET: 21 OF 79  
DATE: 2/3/2021



BILL OF MATERIALS (SHEET 21)		
ITEM DESCRIPTION	UNIT	TOTAL QTY.
FIBER OPTIC CABLE 96 FIBERS, SINGLE MODE	FOOT	2720
UNDERGROUND CONDUIT, MULTI-DUCT, 7-16 MM MICRODUCTS	FOOT	2520
COMMUNICATIONS VAULT	EACH	1

\* MCLEAN/ WOODFORD/ MARSHALL

MODEL: Default.dwg FILE NAME: dwg	USER NAME = bourisba	DESIGNED -	REVISED -	STATE OF ILLINOIS DEPARTMENT OF TRANSPORTATION	FIBER OPTIC CONDUIT AND CABLE PROJECT I-39 (FROM BLOOMINGTON TO WENONA) CONTINUED				F.A.I. RTE.	SECTION	COUNTY	TOTAL SHEETS	SHEET NO.
		DRAWN -	REVISED -						39	[62-2];102(1-4);57(2-4)ITS	*	79	21
	PLOT SCALE = 160,0000 ' / in.	CHECKED -	REVISED -		CONTRACT NO. 68G20								
	PLOT DATE = 2/3/2021	DATE -	REVISED -		ILLINOIS FED. AID PROJECT								
					NOT TO SCALE	SHEET 21	OF	79	SHEETS				









BILL OF MATERIALS (SHEET 23)		
ITEM DESCRIPTION	UNIT	TOTAL QTY.
FIBER OPTIC CABLE 96 FIBERS, SINGLE MODE	FOOT	2735
UNDERGROUND CONDUIT, MULTI-DUCT, 7-16 MM MICRODUCTS	FOOT	2535
COMMUNICATIONS VAULT	EACH	1

\* MCLEAN/WOODFORD/MARSHALL

MODEL: Default  
FILE: \\miller\c:\projects\68G20\68G20.dwg  
PROJECT: 68G20  
SHEET: 23  
DATE: 2/3/2021

USER NAME = bourisba	DESIGNED -	REVISED -
	DRAWN -	REVISED -
PLOT SCALE = 160,0000 ' / in.	CHECKED -	REVISED -
PLOT DATE = 2/3/2021	DATE -	REVISED -

STATE OF ILLINOIS  
DEPARTMENT OF TRANSPORTATION

FIBER OPTIC CONDUIT AND CABLE PROJECT  
I-39 (FROM BLOOMINGTON TO WENONA) CONTINUED

NOT TO SCALE SHEET 23 OF 79 SHEETS

F.A.I. RTE.	SECTION	COUNTY	TOTAL SHEETS	SHEET NO.
39	[62-2];102(1-4);57(2-4)]ITS	*	79	23
CONTRACT NO. 68G20				
ILLINOIS FED. AID PROJECT				



MODEL: Default  
FILE NAME: s:\projects\amnonn.dot\illinois\pww\DOT\Documents\DOT Office\District 4\Projects\DL\_68GXXCADD\sta\CAD\Sheet\Consult\_dba\1130.dgn



BILL OF MATERIALS (SHEET 24)		
ITEM DESCRIPTION	UNIT	TOTAL QTY.
FIBER OPTIC CABLE 96 FIBERS, SINGLE MODE	FOOT	2720
UNDERGROUND CONDUIT, MULTI-DUCT, 7-16 MM MICRODUCTS	FOOT	2520
COMMUNICATIONS VAULT	EACH	1

\* MCLEAN/WOODFORD/MARSHALL

	USER NAME = bourisba	DESIGNED -	REVISED -	STATE OF ILLINOIS DEPARTMENT OF TRANSPORTATION	FIBER OPTIC CONDUIT AND CABLE PROJECT I-39 (FROM BLOOMINGTON TO WENONA) CONTINUED			F.A.I. RTE.	SECTION	COUNTY	TOTAL SHEETS	SHEET NO.	
		DRAWN -	REVISED -					39	[62-2];102(1-4);57(2-4)]ITS	*	79	24	
	PLOT SCALE = 160,0000 ' / in.	CHECKED -	REVISED -		CONTRACT NO. 68G20								
	PLOT DATE = 2/3/2021	DATE -	REVISED -		NOT TO SCALE	SHEET 24 OF 79 SHEETS	ILLINOIS FED. AID PROJECT						







I-39 (NB)

COMMUNICATIONS VAULT  
1.0 EACH

UNDRGRD C MD  
1610 FT.

BILL OF MATERIALS (SHEET 26)		
ITEM DESCRIPTION	UNIT	TOTAL QTY.
FIBER OPTIC CABLE 96 FIBERS, SINGLE MODE	FOOT	2720
UNDERGROUND CONDUIT, MULTI-DUCT, 7-16 MM MICRODUCTS	FOOT	2520
COMMUNICATIONS VAULT	EACH	1

\* MCLEAN/WOODFORD/MARSHALL

	USER NAME = bourisba	DESIGNED -	REVISED -	STATE OF ILLINOIS DEPARTMENT OF TRANSPORTATION	FIBER OPTIC CONDUIT AND CABLE PROJECT I-39 (FROM BLOOMINGTON TO WENONA) CONTINUED				F.A.I. RTE.	SECTION	COUNTY	TOTAL SHEETS	SHEET NO.
		DRAWN -	REVISED -						39	[62-2]:102[1-4]:57[2-4]]ITS	*	79	26
	PLOT SCALE = 160,000' / in.	CHECKED -	REVISED -						CONTRACT NO. 68G20				
	PLOT DATE = 2/3/2021	DATE -	REVISED -		NOT TO SCALE SHEET 26 OF 79 SHEETS				ILLINOIS FED. AID PROJECT				



MODEL: Default  
FILE NAME: s:\projects\amnonm.dot\illinois\pww\DOT Documents\DOT Office\District 4\Projects\DUJ 68GXX\CAD\DATA\CAD Sheets\Conduit.dwg 1/130.dwg



BILL OF MATERIALS (SHEET 27)		
ITEM DESCRIPTION	UNIT	TOTAL QTY.
FIBER OPTIC CABLE 96 FIBERS, SINGLE MODE	FOOT	2720
UNDERGROUND CONDUIT, MULTI- DUCT, 7-16 MM MICRODUCTS	FOOT	2520
COMMUNICATIONS VAULT	EACH	1

\* MCLEAN/ WOODFORD / MARSHALL

	USER NAME = bourisba	DESIGNED -	REVISED -	STATE OF ILLINOIS DEPARTMENT OF TRANSPORTATION	FIBER OPTIC CONDUIT AND CABLE PROJECT I-39 (FROM BLOOMINGTON TO WENONA) CONTINUED			F.A.I. RTE.	SECTION	COUNTY	TOTAL SHEETS	SHEET NO.
		DRAWN -	REVISED -					39	[62-2);102(1-4);57(2-4)]ITS	*	79	27
	PLOT SCALE = 160,0000 ' / in.	CHECKED -	REVISED -					CONTRACT NO. 68G20				
	PLOT DATE = 2/3/2021	DATE -	REVISED -		NOT TO SCALE	SHEET 27	OF 79 SHEETS	ILLINOIS FED. AID PROJECT				





I-39 (SB)

I-39 (NB)

UNDRGRD C MD  
1030 FT.

UNDRGRD C MD  
100 FT. (PUSHED  
UNDER CULVERT)

UNDRGRD C MD  
1390 FT.

BILL OF MATERIALS (SHEET 28)

ITEM DESCRIPTION	UNIT	TOTAL QTY.
FIBER OPTIC CABLE 96 FIBERS, SINGLE MODE	FOOT	2520
UNDERGROUND CONDUIT, MULTI-DUCT, 7-16 MM MICRODUCTS	FOOT	2520

\* MCLEAN/WOODFORD/MARSHALL

USER NAME = bourisba	DESIGNED -	REVISED -
	DRAWN -	REVISED -
PLOT SCALE = 160,0000 ' / in.	CHECKED -	REVISED -
PLOT DATE = 2/3/2021	DATE -	REVISED -

STATE OF ILLINOIS  
DEPARTMENT OF TRANSPORTATION

FIBER OPTIC CONDUIT AND CABLE PROJECT  
I-39 (FROM BLOOMINGTON TO WENONA) CONTINUED

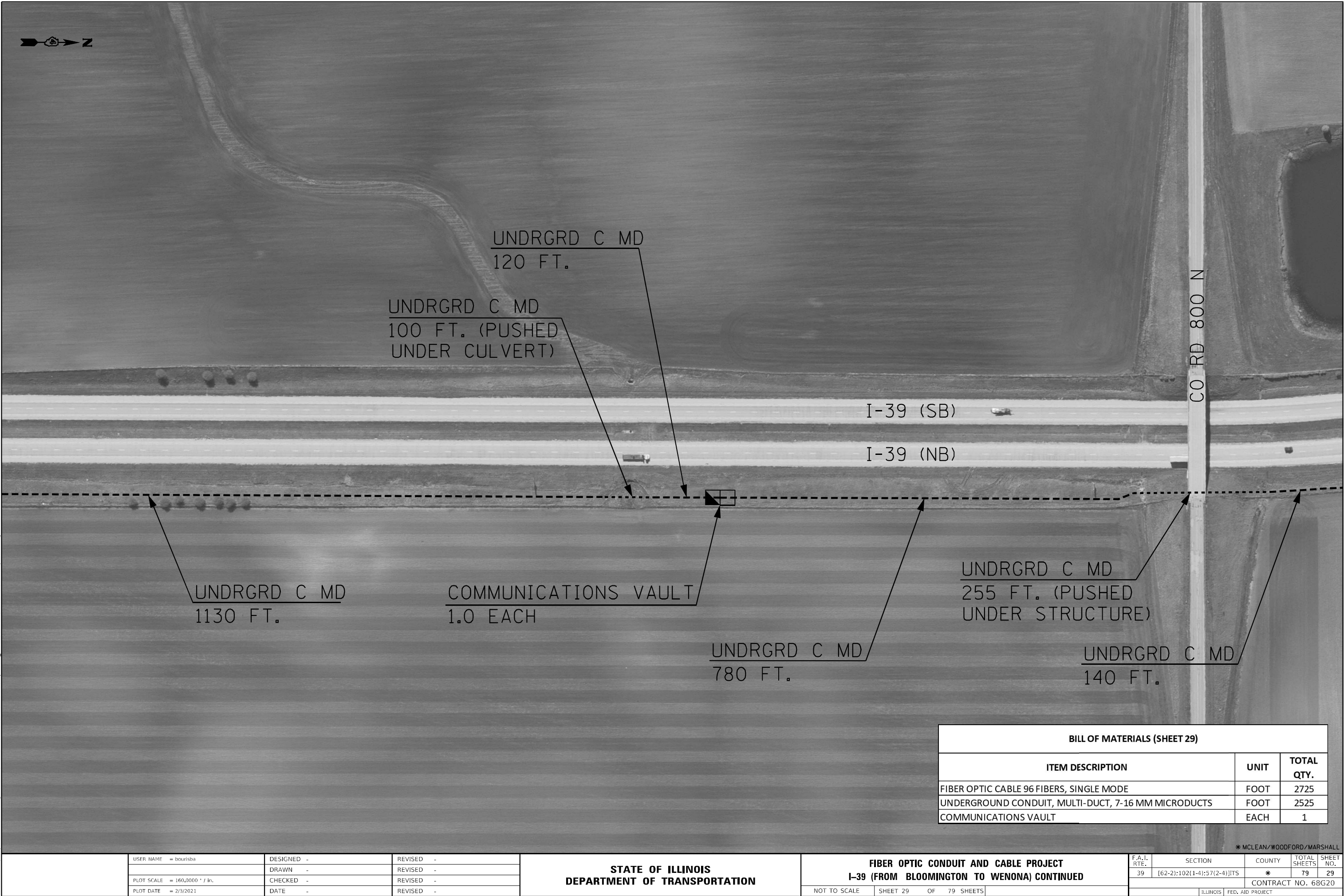
NOT TO SCALE    SHEET 28    OF    79 SHEETS

F.A.I. RTE.	SECTION	COUNTY	TOTAL SHEETS	SHEET NO.
39	[62-2);102(1-4);57(2-4)]ITS	*	79	28
ILLINOIS				FED. AID PROJECT

CONTRACT NO. 68G20



MODEL: Default  
FILE: \\mclea\pwworkspace\mclea\pwworkspace\Illinois\DOT Documents\DOT Office\District 4\Projects\DA\_68GXX\CADD\TA\CD\Fiber\Sheet\Consult.dgn 11/30/2021



BILL OF MATERIALS (SHEET 29)		
ITEM DESCRIPTION	UNIT	TOTAL QTY.
FIBER OPTIC CABLE 96 FIBERS, SINGLE MODE	FOOT	2725
UNDERGROUND CONDUIT, MULTI-DUCT, 7-16 MM MICRODUCTS	FOOT	2525
COMMUNICATIONS VAULT	EACH	1

\* MCLEAN/WOODFORD/MARSHALL

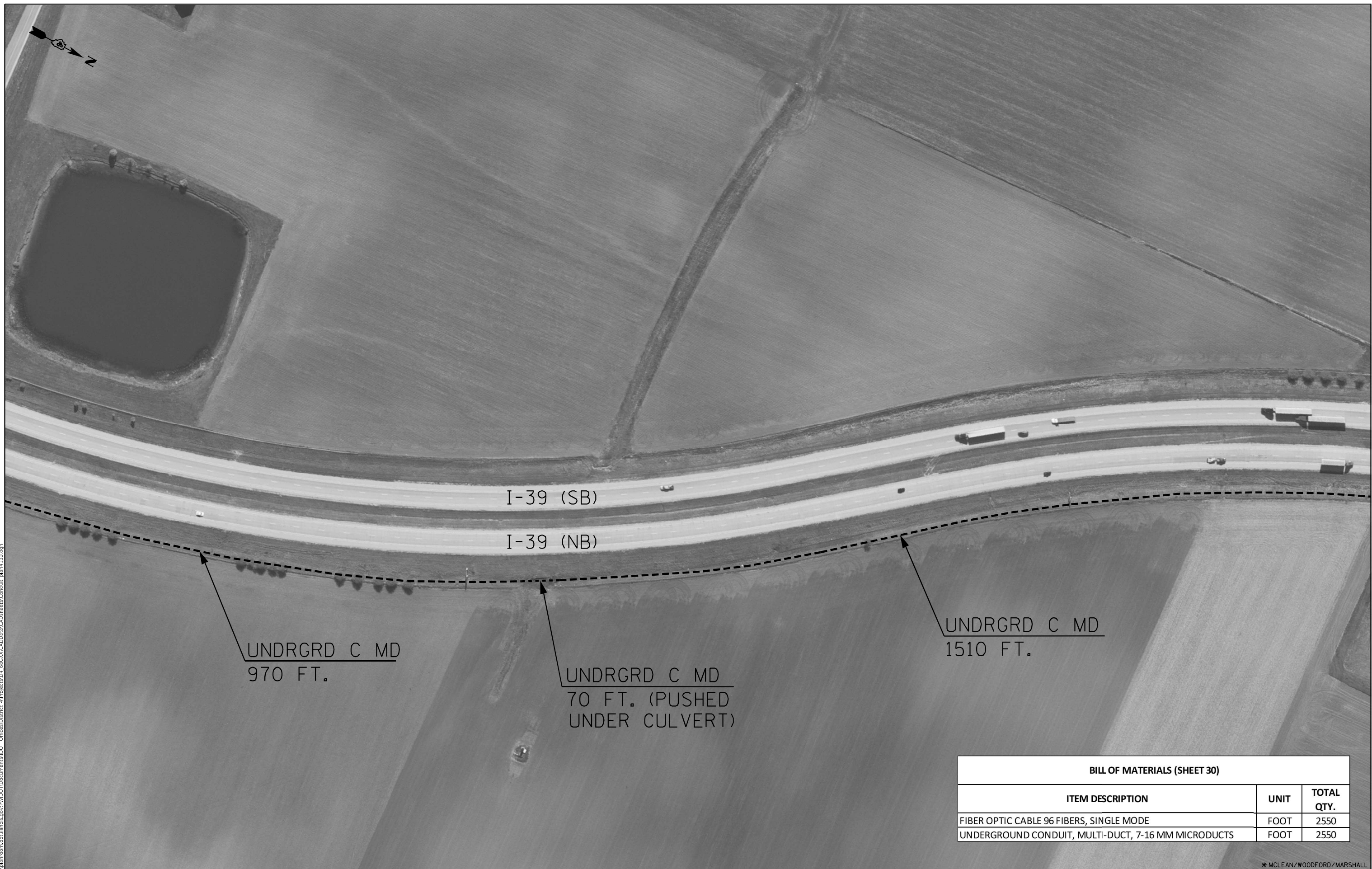
	USER NAME = bourisba	DESIGNED -	REVISED -
		DRAWN -	REVISED -
	PLOT SCALE = 160,0000 ' / in.	CHECKED -	REVISED -
	PLOT DATE = 2/3/2021	DATE -	REVISED -

<b>STATE OF ILLINOIS</b> <b>DEPARTMENT OF TRANSPORTATION</b>
---

<b>FIBER OPTIC CONDUIT AND CABLE PROJECT</b> <b>I-39 (FROM BLOOMINGTON TO WENONA) CONTINUED</b>		
NOT TO SCALE	SHEET 29	OF 79 SHEETS

F.A.I. RTE.	SECTION	COUNTY	TOTAL SHEETS	SHEET NO.
39	[62-2];102(1-4);57(2-4)]ITS	*	79	29
			CONTRACT NO. 68G20	
		ILLINOIS	FED. AID PROJECT	



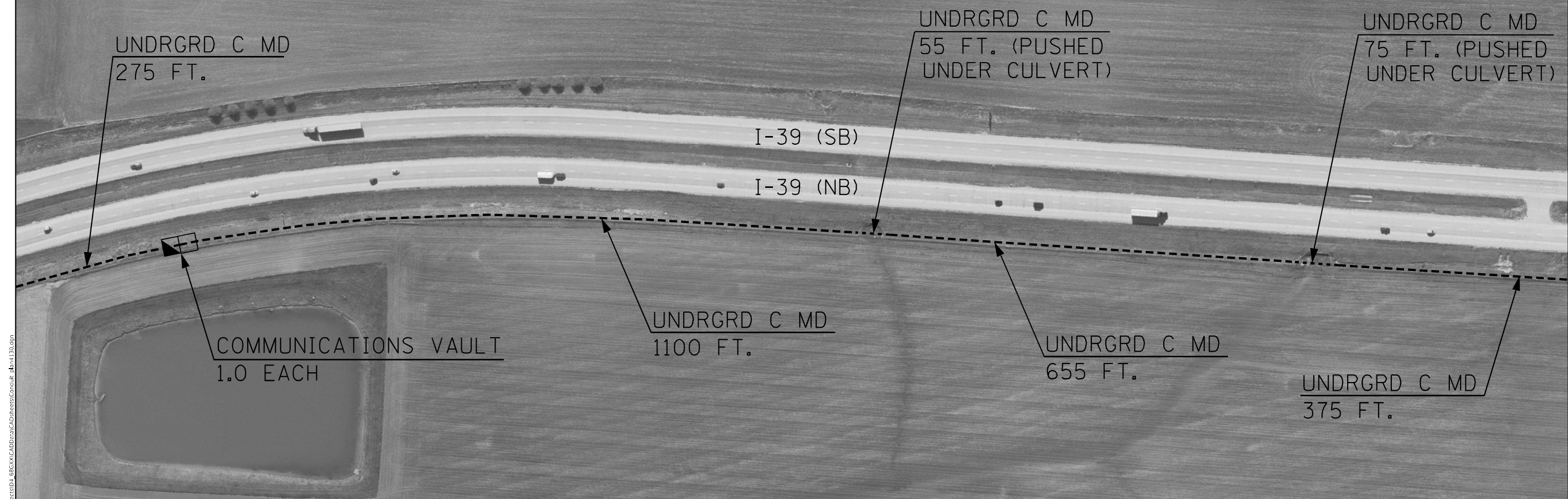


BILL OF MATERIALS (SHEET 30)		
ITEM DESCRIPTION	UNIT	TOTAL QTY.
FIBER OPTIC CABLE 96 FIBERS, SINGLE MODE	FOOT	2550
UNDERGROUND CONDUIT, MULTI-DUCT, 7-16 MM MICRODUCTS	FOOT	2550

\* MCLEAN/WOODFORD/MARSHALL

FILE NAME:	USER NAME = bourisba	DESIGNED -	REVISED -	STATE OF ILLINOIS DEPARTMENT OF TRANSPORTATION	FIBER OPTIC CONDUIT AND CABLE PROJECT I-39 (FROM BLOOMINGTON TO WENONA) CONTINUED					F.A.I. RTE.	SECTION	COUNTY	TOTAL SHEETS	SHEET NO.
		DRAWN -	REVISED -		39	[62-2];102(1-4);57(2-4)JTS	*	79	30					
	PLOT SCALE = 160,0000 ' / in.	CHECKED -	REVISED -		CONTRACT NO. 68G20									
	PLOT DATE = 2/3/2021	DATE -	REVISED -		NOT TO SCALE	SHEET 30	OF 79 SHEETS	ILLINOIS FED. AID PROJECT						





BILL OF MATERIALS (SHEET 31)		
ITEM DESCRIPTION	UNIT	TOTAL QTY.
FIBER OPTIC CABLE 96 FIBERS, SINGLE MODE	FOOT	2735
UNDERGROUND CONDUIT, MULTI-DUCT, 7-16 MM MICRODUCTS	FOOT	2535
COMMUNICATIONS VAULT	EACH	1

\* MCLEAN/ WOODFORD/ MARSHALL

MODEL: Default  
FILE NAME: 68G20.dwg  
PLOT DATE: 2/3/2021

USER NAME = bourisba	DESIGNED -	REVISED -	STATE OF ILLINOIS DEPARTMENT OF TRANSPORTATION	FIBER OPTIC CONDUIT AND CABLE PROJECT I-39 (FROM BLOOMINGTON TO WENONA) CONTINUED	NOT TO SCALE	SHEET 31 OF 79 SHEETS	F.A.I. RTE.	SECTION	COUNTY	TOTAL SHEETS	SHEET NO.
PLOT SCALE = 160,0000 ' / in.	DRAWN -	REVISED -					39	[62-2];102(1-4);57(2-4)]ITS	*	79	31
PLOT DATE = 2/3/2021	CHECKED -	REVISED -					CONTRACT NO. 68G20				
	DATE -	REVISED -					ILLINOIS FED. AID PROJECT				



I-39 (NB)

COMMUNICATIONS VAULT  
1.0 EACH

UNDRGRD C MD  
780 FT.

BILL OF MATERIALS (SHEET 32)		
ITEM DESCRIPTION	UNIT	TOTAL QTY.
FIBER OPTIC CABLE 96 FIBERS, SINGLE MODE	FOOT	2720
UNDERGROUND CONDUIT, MULTI-DUCT, 7-16 MM MICRODUCTS	FOOT	2520
COMMUNICATIONS VAULT	EACH	1

\* MCLEAN/WOODFORD/MARSHALL

FILE NAME: D:\

	USER NAME = bourisba	DESIGNED -	REVISED -	STATE OF ILLINOIS DEPARTMENT OF TRANSPORTATION	FIBER OPTIC CONDUIT AND CABLE PROJECT I-39 (FROM BLOOMINGTON TO WENONA) CONTINUED				F.A.I. RTE.	SECTION	COUNTY	TOTAL SHEETS	SHEET NO.	
		DRAWN -	REVISED -						39	[62-2]:102(1-4):57(2-4)]ITS	*	79	32	
	PLOT SCALE = 160,0000 ' / in.	CHECKED -	REVISED -		NOT TO SCALE				SHEET 32	OF 79 SHEETS	CONTRACT NO. 68G20			
	PLOT DATE = 2/3/2021	DATE -	REVISED -						ILLINOIS		FED. AID PROJECT			













MODEL: Default  
FILE: \\miller\p\projects\68GXX\68GXX\DOT Documents\DOT Office\District 4\Projects\DU\_68GXX\CADD\sta\CAD\Sheet\Consult\_dba1130.dgn



BILL OF MATERIALS (SHEET 35)		
ITEM DESCRIPTION	UNIT	TOTAL QTY.
FIBER OPTIC CABLE 96 FIBERS, SINGLE MODE	FOOT	2720
UNDERGROUND CONDUIT, MULTI-DUCT, 7-16 MM MICRODUCTS	FOOT	2520
COMMUNICATIONS VAULT	EACH	1

\* MCLEAN/WOODFORD/MARSHALL

	USER NAME = bourisba	DESIGNED -	REVISED -	STATE OF ILLINOIS DEPARTMENT OF TRANSPORTATION	FIBER OPTIC CONDUIT AND CABLE PROJECT I-39 (FROM BLOOMINGTON TO WENONA) CONTINUED	NOT TO SCALE	SHEET 35 OF 79 SHEETS	F.A.I. RTE. SECTION		COUNTY	TOTAL SHEETS	SHEET NO.
		DRAWN -	REVISED -					39	[62-2];102(1-4);57(2-4)]ITS	*	79	35
	PLOT SCALE = 160,0000 ' / in.	CHECKED -	REVISED -					CONTRACT NO. 68G20				
	PLOT DATE = 2/3/2021	DATE -	REVISED -					ILLINOIS FED. AID PROJECT				





UNDRGRD C MD  
1725 FT.

\* MCLEAN/WOODFORD/MARSHALL

	USER NAME = bourisba	DESIGNED -	REVISED -	STATE OF ILLINOIS DEPARTMENT OF TRANSPORTATION	FIBER OPTIC CONDUIT AND CABLE PROJECT I-39 (FROM BLOOMINGTON TO WENONA) CONTINUED				F.A.I. RTE.	SECTION	COUNTY	TOTAL SHEETS	SHEET NO.
		DRAWN -	REVISED -						39	[62-2]:102(1-4):57(2-4)]ITS	*	79	36
	PLOT SCALE = 160,0000 ' / in.	CHECKED -	REVISED -		CONTRACT NO. 68G20								
	PLOT DATE = 2/3/2021	DATE -	REVISED -		NOT TO SCALE	SHEET 36	OF 79 SHEETS	ILLINOIS FED. AID PROJECT					





I-39 (NB)

UNDRGRD C MD  
1890 FT.

\* MCLEAN/WOODFORD/MARSHALL

FILE NAME: D:\11-2014\11-2014-001.dwg	USER NAME = bourisba	DESIGNED -	REVISED -	STATE OF ILLINOIS DEPARTMENT OF TRANSPORTATION	FIBER OPTIC CONDUIT AND CABLE PROJECT I-39 (FROM BLOOMINGTON TO WENONA) CONTINUED				F.A.I. RTE.	SECTION	COUNTY	TOTAL SHEETS	SHEET NO.
		DRAWN -	REVISED -						39	[62-2];102(1-4);57(2-4)]ITS	*	79	37
	PLOT SCALE = 160,0000' / in.	CHECKED -	REVISED -						CONTRACT NO. 68G20				
	PLOT DATE = 2/3/2021	DATE -	REVISED -										
					NOT TO SCALE	SHEET 37	OF 79 SHEETS						
								ILLINOIS	FED. AID PROJECT				







\* MCLEAN/WOODFORD/MARSHALL

MODEL: Default  
FILE NAME: ovi:\planroom\_dot\_illinois.gov\PWIDOT\Documents\IDOT\_Offices\District\_4\Projects\ID4\_68GXX\CADData\CADsheets\Conduit\_plan4130.dgn





I-39 (SB)

I-39 (NB)

UNDRGRD C MD  
1270 FT.

COMMUNICATIONS VAULT  
1.0 EACH

UNDRGRD C MD  
1250 FT.

BILL OF MATERIALS (SHEET 40)		
ITEM DESCRIPTION	UNIT	TOTAL QTY.
FIBER OPTIC CABLE 96 FIBERS, SINGLE MODE	FOOT	2720
UNDERGROUND CONDUIT, MULTI-DUCT, 7-16 MM MICRODUCTS	FOOT	2520
COMMUNICATIONS VAULT	EACH	1

\* MCLEAN/ WOODFORD/ MARSHALL

MODEL: Default  
FILE NAME: 202

<div></div>	USER NAME = bourisba	DESIGNED -	REVISED -	<div>STATE OF ILLINOIS DEPARTMENT OF TRANSPORTATION</div>	<div>FIBER OPTIC CONDUIT AND CABLE PROJECT I-39 (FROM BLOOMINGTON TO WENONA) CONTINUED</div>				F.A.I. RTE.:	SECTION	COUNTY	TOTAL SHEETS	SHEET NO.
		DRAWN -	REVISED -						39	[62-2);102(1-4);57(2-4)]ITS	*	79	40
	PLOT SCALE = 160,0000 ' / in.	CHECKED -	REVISED -						CONTRACT NO. 68G20				
	PLOT DATE = 2/3/2021	DATE -	REVISED -		ILLINOIS FED. AID PROJECT								
							NOT TO SCALE	SHEET 40	OF 79 SHEETS				





MODEL: Default  
FILE: \\miller\projects\68G20\68G20.dwg  
PROJECT: I-39 (FROM BLOOMINGTON TO WENONA) CONTINUED  
SHEET: 41 OF 79  
DATE: 2/3/2021  
USER: bourisba

BILL OF MATERIALS (SHEET 41)		
ITEM DESCRIPTION	UNIT	TOTAL QTY.
FIBER OPTIC CABLE 96 FIBERS, SINGLE MODE	FOOT	2520
UNDERGROUND CONDUIT, MULTI-DUCT, 7-16 MM MICRODUCTS	FOOT	2520

\* MCLEAN/WOODFORD/MARSHALL

MODEL: Definitive  
FILE NAME: 202

<div></div>	USER NAME = bourisba	DESIGNED -	REVISED -	STATE OF ILLINOIS DEPARTMENT OF TRANSPORTATION	FIBER OPTIC CONDUIT AND CABLE PROJECT I-39 (FROM BLOOMINGTON TO WENONA) CONTINUED	NOT TO SCALE	SHEET 41 OF 79 SHEETS	F.A.I. RTE. 39	SECTION [62-2];102(1-4);57(2-4)]ITS	COUNT *	TOTAL SHEETS 79	SHEET NO. 41
		DRAWN -	REVISED -									
	PLOT SCALE = 160,0000 ' / in.	CHECKED -	REVISED -									
	PLOT DATE = 2/3/2021	DATE -	REVISED -									
	ILLINOIS FED. AID PROJECT											



I-39 (NB)

UNDRGRD C MD  
230 FT.

UNDRGRD C MD  
2290 FT.

\* MCLEAN/WOODFORD/MARSHALL

	USER NAME   =  bourisba	DESIGNED   -	REVISED   -	STATE OF ILLINOIS DEPARTMENT OF TRANSPORTATION	FIBER OPTIC CONDUIT AND CABLE PROJECT I-39 (FROM BLOOMINGTON TO WENONA) CONTINUED				F.A.I. RTE.	SECTION	COUNTY	TOTAL SHEETS	SHEET NO.	
		DRAWN    -	REVISED   -						39	[62-2];102(1-4);57(2-4)]ITS	*	79	42	
	PLOT SCALE   =  160,0000 ' / in.	CHECKED   -	REVISED   -						CONTRACT NO. 68G20					
	PLOT DATE    =  2/3/2021	DATE       -	REVISED   -		NOT TO SCALE	SHEET 42	OF 79 SHEETS							
					ILLINOIS   FED. AID PROJECT									





MODEL: Default  
FILE: \\mfc-001\lanonon.doi\linelc.gov\PWIDOT\Documents\IDOT Office\District 4\Projects\DL\_68GXX\CAD\Drawings\Conduit.dgn 1130.dgn

BILL OF MATERIALS (SHEET 43)		
ITEM DESCRIPTION	UNIT	TOTAL QTY.
FIBER OPTIC CABLE 96 FIBERS, SINGLE MODE	FOOT	2725
UNDERGROUND CONDUIT, MULTI-DUCT, 7-16 MM MICRODUCTS	FOOT	2525
COMMUNICATIONS VAULT	EACH	1

\* MCLEAN/WOODFORD/MARSHALL

	USER NAME = bourisba	DESIGNED -	REVISED -	STATE OF ILLINOIS DEPARTMENT OF TRANSPORTATION	FIBER OPTIC CONDUIT AND CABLE PROJECT I-39 (FROM BLOOMINGTON TO WENONA) CONTINUED	NOT TO SCALE	SHEET 43 OF 79 SHEETS	F.A.I. RTE.:	SECTION	COUNTY	TOTAL SHEETS	SHEET NO.
	PLOT SCALE = 160,0000 ' / in.	DRAWN -	REVISED -					39	[62-2);102(1-4);57(2-4)]ITS	*	79	43
	PLOT DATE = 2/3/2021	CHECKED -	REVISED -					CONTRACT NO. 68G20				
		DATE -	REVISED -					ILLINOIS FED. AID PROJECT				



MODEL: Default  
FILE: \\nrc\gis\projects\ammonia\dot\illinois\gov\PIWIDOT\Documents\IDOT\_Offices\District\_4\Projects\ID4\_68GXX\CADD\sta\CAD\Sheet\Consult\_dba\1130.dgn



BILL OF MATERIALS (SHEET 44)		
ITEM DESCRIPTION	UNIT	TOTAL QTY.
FIBER OPTIC CABLE 96 FIBERS, SINGLE MODE	FOOT	2520
UNDERGROUND CONDUIT, MULTI-DUCT, 7-16 MM MICRODUCTS	FOOT	2520

\* MCLEAN/ WOODFORD/ MARSHALL

	USER NAME = bourisba	DESIGNED -	REVISED -	STATE OF ILLINOIS DEPARTMENT OF TRANSPORTATION	FIBER OPTIC CONDUIT AND CABLE PROJECT I-39 (FROM BLOOMINGTON TO WENONA) CONTINUED			F.A.I. RTE.	SECTION	COUNTY	TOTAL SHEETS	SHEET NO.
	PLOT SCALE = 160,0000 ' / in.	DRAWN -	REVISED -					39	[62-2];102(1-4);57(2-4)]ITS	*	79	44
	PLOT DATE = 2/3/2021	CHECKED -	REVISED -		CONTRACT NO. 68G20							
		DATE -	REVISED -		ILLINOIS FED. AID PROJECT							
						NOT TO SCALE	SHEET 44	OF 79 SHEETS				





BILL OF MATERIALS (SHEET 45)		
ITEM DESCRIPTION	UNIT	TOTAL QTY.
FIBER OPTIC CABLE 96 FIBERS, SINGLE MODE	FOOT	2720
UNDERGROUND CONDUIT, MULTI-DUCT, 7-16 MM MICRODUCTS	FOOT	2520
COMMUNICATIONS VAULT	EACH	1

\* MCLEAN/WOODFORD/MARSHALL

	USER NAME = baurisba	DESIGNED -	REVISED -	STATE OF ILLINOIS DEPARTMENT OF TRANSPORTATION	FIBER OPTIC CONDUIT AND CABLE PROJECT I-39 (FROM BLOOMINGTON TO WENONA) CONTINUED				F.A.I. RTE.	SECTION	COUNTY	TOTAL SHEETS	SHEET NO.
	PLOT SCALE = 160,000' / in.	DRAWN -	REVISED -		39	[62-2):102(1-4):57(2-4)]ITS				*	79	45	
	PLOT DATE = 2/3/2021	CHECKED -	REVISED -		CONTRACT NO. 68G20								
		DATE -	REVISED -		NOT TO SCALE	SHEET 45	OF	79 SHEETS	ILLINOIS FED. AID PROJECT				



MODEL: Default  
FILE: \\mlls\c:\projects\dot\illinois\gov\pww\DOT\Documents\DOT - Office\District 4\Projects\DL\_68GXX\CAD\Drawings\Conduit.dgn



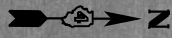
BILL OF MATERIALS (SHEET 46)		
ITEM DESCRIPTION	UNIT	TOTAL QTY.
FIBER OPTIC CABLE 96 FIBERS, SINGLE MODE	FOOT	2720
UNDERGROUND CONDUIT, MULTI-DUCT, 7-16 MM MICRODUCTS	FOOT	2520
COMMUNICATIONS VAULT	EACH	1

\* MCLEAN/ WOODFORD/ MARSHALL

	USER NAME = bourisba	DESIGNED -	REVISED -	STATE OF ILLINOIS DEPARTMENT OF TRANSPORTATION	FIBER OPTIC CONDUIT AND CABLE PROJECT I-39 (FROM BLOOMINGTON TO WENONA) CONTINUED			F.A.I. RTE.	SECTION	COUNTY	TOTAL SHEETS	SHEET NO.	
		DRAWN -	REVISED -					39	[62-2];102(1-4);57(2-4)]ITS	*	79	46	
	PLOT SCALE = 160,0000 ' / in.	CHECKED -	REVISED -		CONTRACT NO. 68G20								
	PLOT DATE = 2/3/2021	DATE -	REVISED -		NOT TO SCALE	SHEET 46 OF 79 SHEETS	ILLINOIS FED. AID PROJECT						



MODEL: Default  
FILE NAME: s:\data\amoon, dot, illinois, gov\PIWIDOT\Documents\IDOT Office\District 4\Projects\DL\_68GXXCADD\sta\CAD\heest\Consult\_dba\1130.dgn



I-39 (SB)

I-39 (NB)

UNDRGRD C MD  
2520 FT.

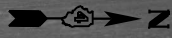
BILL OF MATERIALS (SHEET 47)		
ITEM DESCRIPTION	UNIT	TOTAL QTY.
FIBER OPTIC CABLE 96 FIBERS, SINGLE MODE	FOOT	2520
UNDERGROUND CONDUIT, MULTI-DUCT, 7-16 MM MICRODUCTS	FOOT	2520

\* MCLEAN/ WOODFORD / MARSHALL

	USER NAME = bourisba	DESIGNED -	REVISED -	STATE OF ILLINOIS DEPARTMENT OF TRANSPORTATION	FIBER OPTIC CONDUIT AND CABLE PROJECT I-39 (FROM BLOOMINGTON TO WENONA) CONTINUED			F.A.I. RTE.	SECTION	COUNTY	TOTAL SHEETS	SHEET NO.
		DRAWN -	REVISED -					39	[62-2];102(1-4);57(2-4)]ITS	*	79	47
	PLOT SCALE = 160,0000 ' / in.	CHECKED -	REVISED -					CONTRACT NO. 68G20				
	PLOT DATE = 2/3/2021	DATE -	REVISED -					ILLINOIS FED. AID PROJECT				
	NOT TO SCALE							SHEET 47	OF	79 SHEETS		



MODEL: Default  
FILE: \\mllc-001\lanonon.doi\illinois.gov\PI\DOT\Documents\DOT Office\District 4\Projects\DL\_68GXX\CADD\sta\CAD\heest\Consult\_dba\1130.dgn



I-39 (SB)

I-39 (NB)

UNDRGRD C MD  
820 FT.

UNDRGRD C MD  
490 FT.

UNDRGRD C MD  
50 FT. (PUSHED  
UNDER CULVERT)

UNDRGRD C MD  
1160 FT.

COMMUNICATIONS VAULT  
1.0 EACH

BILL OF MATERIALS (SHEET 48)

ITEM DESCRIPTION	UNIT	TOTAL QTY.
FIBER OPTIC CABLE 96 FIBERS, SINGLE MODE	FOOT	2720
UNDERGROUND CONDUIT, MULTI-DUCT, 7-16 MM MICRODUCTS	FOOT	2520
COMMUNICATIONS VAULT	EACH	1

\* MCLEAN/WOODFORD/MARSHALL

USER NAME = bourisba	DESIGNED -	REVISED -
	DRAWN -	REVISED -
PLOT SCALE = 160,0000 ' / in.	CHECKED -	REVISED -
PLOT DATE = 2/3/2021	DATE -	REVISED -

STATE OF ILLINOIS  
DEPARTMENT OF TRANSPORTATION

FIBER OPTIC CONDUIT AND CABLE PROJECT  
I-39 (FROM BLOOMINGTON TO WENONA) CONTINUED

NOT TO SCALE    SHEET 48    OF    79 SHEETS

F.A.I. RTE.	SECTION	COUNTY	TOTAL SHEETS	SHEET NO.
39	[62-2];102(1-4);57(2-4)]ITS	*	79	48
CONTRACT NO. 68G20				
ILLINOIS FED. AID PROJECT				



MODEL: Default  
FILE: \\mllc\proj\68G20\68G20.dwg  
PROJECT: 68G20 (FROM BLOOMINGTON TO WENONA) CONTINUED  
SHEET: 49 OF 79  
DATE: 2/3/2021



BILL OF MATERIALS (SHEET 49)		
ITEM DESCRIPTION	UNIT	TOTAL QTY.
FIBER OPTIC CABLE 96 FIBERS, SINGLE MODE	FOOT	2720
UNDERGROUND CONDUIT, MULTI-DUCT, 7-16 MM MICRODUCTS	FOOT	2520
COMMUNICATIONS VAULT	EACH	1

\* MCLEAN/ WOODFORD/ MARSHALL

MODEL: DED-100  
FILE NAME: 200

USER NAME = bourisba	DESIGNED -	REVISED -	STATE OF ILLINOIS DEPARTMENT OF TRANSPORTATION	FIBER OPTIC CONDUIT AND CABLE PROJECT I-39 (FROM BLOOMINGTON TO WENONA) CONTINUED			F.A.I. RTE.	SECTION	COUNTY	TOTAL SHEETS	SHEET NO.
	DRAWN -	REVISED -					39	[62-2];102(1-4);57(2-4)ITS	*	79	49
	PLOT SCALE = 160,0000 ' / in.	CHECKED -		REVISED -	CONTRACT NO. 68G20						
	PLOT DATE = 2/3/2021	DATE -		REVISED -	NOT TO SCALE	SHEET 49 OF 79 SHEETS	ILLINOIS FED. AID PROJECT				



TI	116	/	CO	RD	1800	N

\* MCLEAN/WOODFORD/MARSHALL

**STATE OF ILLINOIS  
DEPARTMENT OF TRANSPORTATION**







I-39 (NB)

COMMUNICATIONS VAULT  
1.0 EACH

UNDRGRD C MD  
1015 FT.

BILL OF MATERIALS (SHEET 52)		
ITEM DESCRIPTION	UNIT	TOTAL QTY.
FIBER OPTIC CABLE 96 FIBERS, SINGLE MODE	FOOT	2720
UNDERGROUND CONDUIT, MULTI-DUCT, 7-16 MM MICRODUCTS	FOOT	2520
COMMUNICATIONS VAULT	EACH	1

\* MCLEAN/WOODFORD/MARSHALL

	USER NAME = bourisba	DESIGNED -	REVISED -	<div>STATE OF ILLINOIS DEPARTMENT OF TRANSPORTATION</div>	<div>FIBER OPTIC CONDUIT AND CABLE PROJECT I-39 (FROM BLOOMINGTON TO WENONA) CONTINUED</div>				F.A.I. RTE.	SECTION	COUNTY	TOTAL SHEETS	SHEET NO.
		DRAWN -	REVISED -						39	[62-2];102(1-4);57(2-4)]ITS	*	79	52
	PLOT SCALE = 160,0000' / in.	CHECKED -	REVISED -						CONTRACT NO. 68G20				
	PLOT DATE = 2/3/2021	DATE -	REVISED -		NOT TO SCALE				SHEET 52	OF 79 SHEETS			
ILLINOIS FED. AID PROJECT													



MODEL: Default  
FILE: \\mfc-2021\lanonm\dot\illinois\gov\PIWIDOT\Documents\DOT Office\District 4\Projects\DL\_68GXX\CADD\sta\CAD\Sheet\Conduit.dgn 1130.dgn



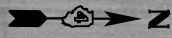
BILL OF MATERIALS (SHEET 53)		
ITEM DESCRIPTION	UNIT	TOTAL QTY.
FIBER OPTIC CABLE 96 FIBERS, SINGLE MODE	FOOT	2525
UNDERGROUND CONDUIT, MULTI-DUCT, 7-16 MM MICRODUCTS	FOOT	2525

\* MCLEAN/WOODFORD/MARSHALL

	USER NAME = bourisba	DESIGNED -	REVISED -	STATE OF ILLINOIS DEPARTMENT OF TRANSPORTATION	FIBER OPTIC CONDUIT AND CABLE PROJECT I-39 (FROM BLOOMINGTON TO WENONA) CONTINUED			F.A.I. RTE.	SECTION	COUNTY	TOTAL SHEETS	SHEET NO.	
		DRAWN -	REVISED -					39	[62-2];102(1-4);57(2-4)]ITS	*	79	53	
	PLOT SCALE = 160,0000 ' / in.	CHECKED -	REVISED -		CONTRACT NO. 68G20								
	PLOT DATE = 2/3/2021	DATE -	REVISED -		NOT TO SCALE			SHEET 53	OF	79 SHEETS	ILLINOIS FED. AID PROJECT		



MODEL: Default  
FILE: \\miller\c:\projects\dot\illinois\dot\pww\dot\documents\dot\office\dot\district 4\projects\dot\4\_68GXX\CADD\sta\cab\sheet54\cab\sheet54.dgn



I-39 (SB)

I-39 (NB)

UNDRGRD C MD  
460 FT.

COMMUNICATIONS VAULT  
1.0 EACH

UNDRGRD C MD  
2060 FT.

BILL OF MATERIALS (SHEET 54)

ITEM DESCRIPTION	UNIT	TOTAL QTY.
FIBER OPTIC CABLE 96 FIBERS, SINGLE MODE	FOOT	2720
UNDERGROUND CONDUIT, MULTI-DUCT, 7-16 MM MICRODUCTS	FOOT	2520
COMMUNICATIONS VAULT	EACH	1

\* MCLEAN/ WOODFORD/ MARSHALL

USER NAME = bourisba	DESIGNED -	REVISED -
	DRAWN -	REVISED -
PLOT SCALE = 160,0000 ' / in.	CHECKED -	REVISED -
PLOT DATE = 2/3/2021	DATE -	REVISED -

STATE OF ILLINOIS  
DEPARTMENT OF TRANSPORTATION

FIBER OPTIC CONDUIT AND CABLE PROJECT  
I-39 (FROM BLOOMINGTON TO WENONA) CONTINUED

NOT TO SCALE    SHEET 54    OF    79 SHEETS

F.A.I. RTE.	SECTION	COUNTY	TOTAL SHEETS	SHEET NO.
39	[62-2];102(1-4);57(2-4)]ITS	*	79	54
				CONTRACT NO. 68G20
ILLINOIS    FED. AID PROJECT				







MODEL: Default  
FILE: \\nrc\gis\work\ammon\dot\illinois\gov\PIWIDOT\Documents\IDOT Office\District 4\Projects\DL\_68GXX\CADD\sta\CAD\Sheet\Consult\_dba\1130.dgn



BILL OF MATERIALS (SHEET 56)		
ITEM DESCRIPTION	UNIT	TOTAL QTY.
FIBER OPTIC CABLE 96 FIBERS, SINGLE MODE	FOOT	2610
UNDERGROUND CONDUIT, MULTI-DUCT, 7-16 MM MICRODUCTS	FOOT	2610

\* MCLEAN/ WOODFORD/ MARSHALL

	USER NAME   = bourisba	DESIGNED   -	REVISED   -	STATE OF ILLINOIS DEPARTMENT OF TRANSPORTATION	FIBER OPTIC CONDUIT AND CABLE PROJECT I-39 (FROM BLOOMINGTON TO WENONA) CONTINUED			F.A.I. RTE.	SECTION	COUNTY	TOTAL SHEETS	SHEET NO.	
	PLOT SCALE   = 160,0000 ' / in.	DRAWN    -	REVISED   -					39	[62-2];102(1-4);57(2-4)]ITS	*	79	56	
	PLOT DATE    = 2/3/2021	DATE       -	REVISED   -		NOT TO SCALE		SHEET 56       OF   79 SHEETS	CONTRACT NO. 68G20					
							ILLINOIS   FED. AID PROJECT						





BILL OF MATERIALS (SHEET 57)		
ITEM DESCRIPTION	UNIT	TOTAL QTY.
FIBER OPTIC CABLE 96 FIBERS, SINGLE MODE	FOOT	2750
UNDERGROUND CONDUIT, MULTI-DUCT, 7-16 MM MICRODUCTS	FOOT	2550
COMMUNICATIONS VAULT	EACH	1

\* MCLEAN/ WOODFORD/ MARSHALL

	USER NAME = bourisba	DESIGNED -	REVISED -	STATE OF ILLINOIS DEPARTMENT OF TRANSPORTATION	FIBER OPTIC CONDUIT AND CABLE PROJECT I-39 (FROM BLOOMINGTON TO WENONA) CONTINUED			F.A.I. RTE.	SECTION	COUNTY	TOTAL SHEETS	SHEET NO.
		DRAWN -	REVISED -					39	[62-2];102(1-4);57(2-4)]ITS	*	79	57
	PLOT SCALE = 160,000' / in.	CHECKED -	REVISED -					CONTRACT NO. 68G20				
	PLOT DATE = 2/3/2021	DATE -	REVISED -					ILLINOIS FED. AID PROJECT				
						NOT TO SCALE	SHEET 57 OF 79 SHEETS					



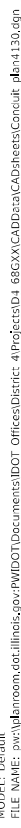


BILL OF MATERIALS (SHEET 58)		
ITEM DESCRIPTION	UNIT	TOTAL QTY.
FIBER OPTIC CABLE 96 FIBERS, SINGLE MODE	FOOT	2820
UNDERGROUND CONDUIT, MULTI-DUCT, 7-16 MM MICRODUCTS	FOOT	2620
COMMUNICATIONS VAULT	EACH	1

\* MCLEAN/ WOODFORD / MARSHALL

	USER NAME = bourisba	DESIGNED -	REVISED -	STATE OF ILLINOIS DEPARTMENT OF TRANSPORTATION	FIBER OPTIC CONDUIT AND CABLE PROJECT I-39 (FROM BLOOMINGTON TO WENONA) CONTINUED			F.A.I. RTE.	SECTION	COUNTY	TOTAL SHEETS	SHEET NO.
		DRAWN -	REVISED -					39	[62-2);102(1-4);57(2-4)]ITS	*	79	58
	PLOT SCALE = 160,0000 ' / in.	CHECKED -	REVISED -		CONTRACT NO. 68G20							
	PLOT DATE = 2/3/2021	DATE -	REVISED -		ILLINOIS FED. AID PROJECT							
						NOT TO SCALE	SHEET 58	OF 79 SHEETS				





UNDRGRD C MD  
2045 FT.

\* MCLEAN/WOODFORD/MARSHALL

FILE NAME: D:\

	USER NAME = bourisba	DESIGNED -	REVISED -	STATE OF ILLINOIS DEPARTMENT OF TRANSPORTATION	FIBER OPTIC CONDUIT AND CABLE PROJECT I-39 (FROM BLOOMINGTON TO WENONA) CONTINUED				F.A.I. RTE.	SECTION	COUNTY	TOTAL SHEETS	SHEET NO.
		DRAWN -	REVISED -						39	[62-2]:102(1-4):57(2-4)]ITS	*	79	59
	PLOT SCALE = 160,0000 ' / in.	CHECKED -	REVISED -						CONTRACT NO. 68G20				
	PLOT DATE = 2/3/2021	DATE -	REVISED -		NOT TO SCALE	SHEET 59	OF 79	SHEETS	ILLINOIS FED. AID PROJECT				





MODEL: Default  
FILE: \\miles\proj\68GXXCAD\Drawings\DOT Office\District 4\Projects\DI\_68GXXCAD\Drawings\Conduit.dgn  
DATE: 2/3/2021



BILL OF MATERIALS (SHEET 60)		
ITEM DESCRIPTION	UNIT	TOTAL QTY.
FIBER OPTIC CABLE 96 FIBERS, SINGLE MODE	FOOT	2745
UNDERGROUND CONDUIT, MULTI-DUCT, 7-16 MM MICRODUCTS	FOOT	2545
COMMUNICATIONS VAULT	EACH	1

\* MCLEAN/WOODFORD/MARSHALL

STATE OF ILLINOIS DEPARTMENT OF TRANSPORTATION				FIBER OPTIC CONDUIT AND CABLE PROJECT I-39 (FROM BLOOMINGTON TO WENONA) CONTINUED				F.A.I. RTE.	SECTION	COUNTY	TOTAL SHEETS	SHEET NO.
NOT TO SCALE				SHEET 60 OF 79 SHEETS				39	[62-2];102(1-4);57(2-4)]ITS	*	79	60
USER NAME = bourisba				DESIGNED -				CONTRACT NO. 68G20				
DRAWN -				REVISD -				ILLINOIS FED. AID PROJECT				
PLOT SCALE = 160,000' / in.				CHECKED -								
PLOT DATE = 2/3/2021				DATE -								



I-39 (NB)

UNDRGRD C MD  
2520 FT.

BILL OF MATERIALS (SHEET 61)		
ITEM DESCRIPTION	UNIT	TOTAL QTY.
FIBER OPTIC CABLE 96 FIBERS, SINGLE MODE	FOOT	2520
UNDERGROUND CONDUIT, MULTI-DUCT, 7-16 MM MICRODUCTS	FOOT	2520

\* MCLEAN/WOODFORD/MARSHALL

FILE NAME: DW

USER NAME = bourisba	DESIGNED -	REVISED -	STATE OF ILLINOIS DEPARTMENT OF TRANSPORTATION	FIBER OPTIC CONDUIT AND CABLE PROJECT I-39 (FROM BLOOMINGTON TO WENONA) CONTINUED			F.A.I. RTE.	SECTION	COUNTY	TOTAL SHEETS	SHEET NO.
	DRAWN -	REVISED -					39	[62-2];102(1-4);57(2-4)]ITS	*	79	61
PLOT SCALE = 160,000 ' / in.	CHECKED -	REVISED -					CONTRACT NO. 68G20				
PLOT DATE = 2/3/2021	DATE -	REVISED -									
				NOT TO SCALE	SHEET 61	OF 79 SHEETS					



I-39 (NB)

UNDRGRD C MD  
2520 FT.

\* MCLEAN/WOODFORD/MARSHALL

	USER NAME = bourisba	DESIGNED -	REVISED -	STATE OF ILLINOIS DEPARTMENT OF TRANSPORTATION	FIBER OPTIC CONDUIT AND CABLE PROJECT I-39 (FROM BLOOMINGTON TO WENONA) CONTINUED				F.A.I. RTE.	SECTION	COUNTY	TOTAL SHEETS	SHEET NO.
		DRAWN -	REVISED -		39	[62-2);102(1-4);57(2-4)]ITS				*	79	62	
	PLOT SCALE = 160,0000 ' / in.	CHECKED -	REVISED -						CONTRACT NO. 68G20				
	PLOT DATE = 2/3/2021	DATE -	REVISED -		NOT TO SCALE SHEET 62 OF 79 SHEETS				ILLINOIS FED. AID PROJECT				





I-39 (NB)

UNDRGRD C MD  
1040 FT.

\* MCLEAN/WOODFORD/MARSHALL

	USER NAME = baurisba	DESIGNED -	REVISED -	STATE OF ILLINOIS DEPARTMENT OF TRANSPORTATION	FIBER OPTIC CONDUIT AND CABLE PROJECT I-39 (FROM BLOOMINGTON TO WENONA) CONTINUED				F.A.I. RTE.	SECTION	COUNTY	TOTAL SHEETS	SHEET NO.
		DRAWN -	REVISED -						39	[62-2];102(1-4);57(2-4)]ITS	*	79	63
	PLOT SCALE = 160,000' / in.	CHECKED -	REVISED -						CONTRACT NO. 68G20				
	PLOT DATE = 2/3/2021	DATE -	REVISED -		NOT TO SCALE		SHEET 63 OF 79 SHEETS		ILLINOIS FED. AID PROJECT				

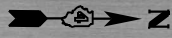


MODEL: Default  
FILE: \\nrc\gis\work\amnon\dot\illinois\gov\PIWDOT\Documents\IDOT Office\District 4\Projects\ID4\_68GXXCADD\sta\CAD\Sheet\Consult\_dba\1130.dgn





Model: Default  
File Name: 68GXXCADBData\CD\Sheets\Conduit.dgn  
User: boursiba  
Project: I-39 (FROM BLOOMINGTON TO WENONA) CONTINUED  
Sheet: 65  
Date: 2/3/2021



BILL OF MATERIALS (SHEET 65)			
ITEM DESCRIPTION		UNIT	TOTAL QTY.
FIBER OPTIC CABLE 96 FIBERS, SINGLE MODE		FOOT	2720
UNDERGROUND CONDUIT, MULTI-DUCT, 7-16 MM MICRODUCTS		FOOT	2520
COMMUNICATIONS VAULT		EACH	1

\* MCLEAN/WOODFORD/MARSHALL

	USER NAME = boursiba	DESIGNED -	REVISED -	STATE OF ILLINOIS DEPARTMENT OF TRANSPORTATION	FIBER OPTIC CONDUIT AND CABLE PROJECT I-39 (FROM BLOOMINGTON TO WENONA) CONTINUED	NOT TO SCALE	SHEET 65 OF 79 SHEETS	F.A.I. RTE. SECTION		COUNTY	TOTAL SHEETS	SHEET NO.
	PLOT SCALE = 160,000' / in.	DRAWN -	REVISED -					39	[62-2];102(1-4);57(2-4)]ITS	*	79	65
	PLOT DATE = 2/3/2021	CHECKED -	REVISED -					CONTRACT NO. 68G20				
		DATE -	REVISED -					ILLINOIS FED. AID PROJECT				



\* MCLEAN/WOODFORD/MARSHALL

	USER NAME = bourisba	DESIGNED -	REVISED -	<div style="text-align: center;"> <b>STATE OF ILLINOIS</b>  <b>DEPARTMENT OF TRANSPORTATION</b> </div>	<div style="text-align: center;"> <b>FIBER OPTIC CONDUIT AND CABLE PROJECT</b>  <b>I-39 (FROM BLOOMINGTON TO WENONA) CONTINUED</b> </div>			F.A.I. RTE.	SECTION	COUNTY	TOTAL SHEETS	SHEET NO.
		DRAWN -	REVISED -					39	[62-2);102(1-4);57(2-4)]ITS	*	79	66
	PLOT SCALE = 160,000' / in.	CHECKED -	REVISED -		CONTRACT NO. 68G20							
	PLOT DATE = 2/3/2021	DATE -	REVISED -		NOT TO SCALE		SHEET 66 OF 79 SHEETS		ILLINOIS FED. AID PROJECT			





I-39 (NB)

UNDRGRD C MD  
2520 FT.

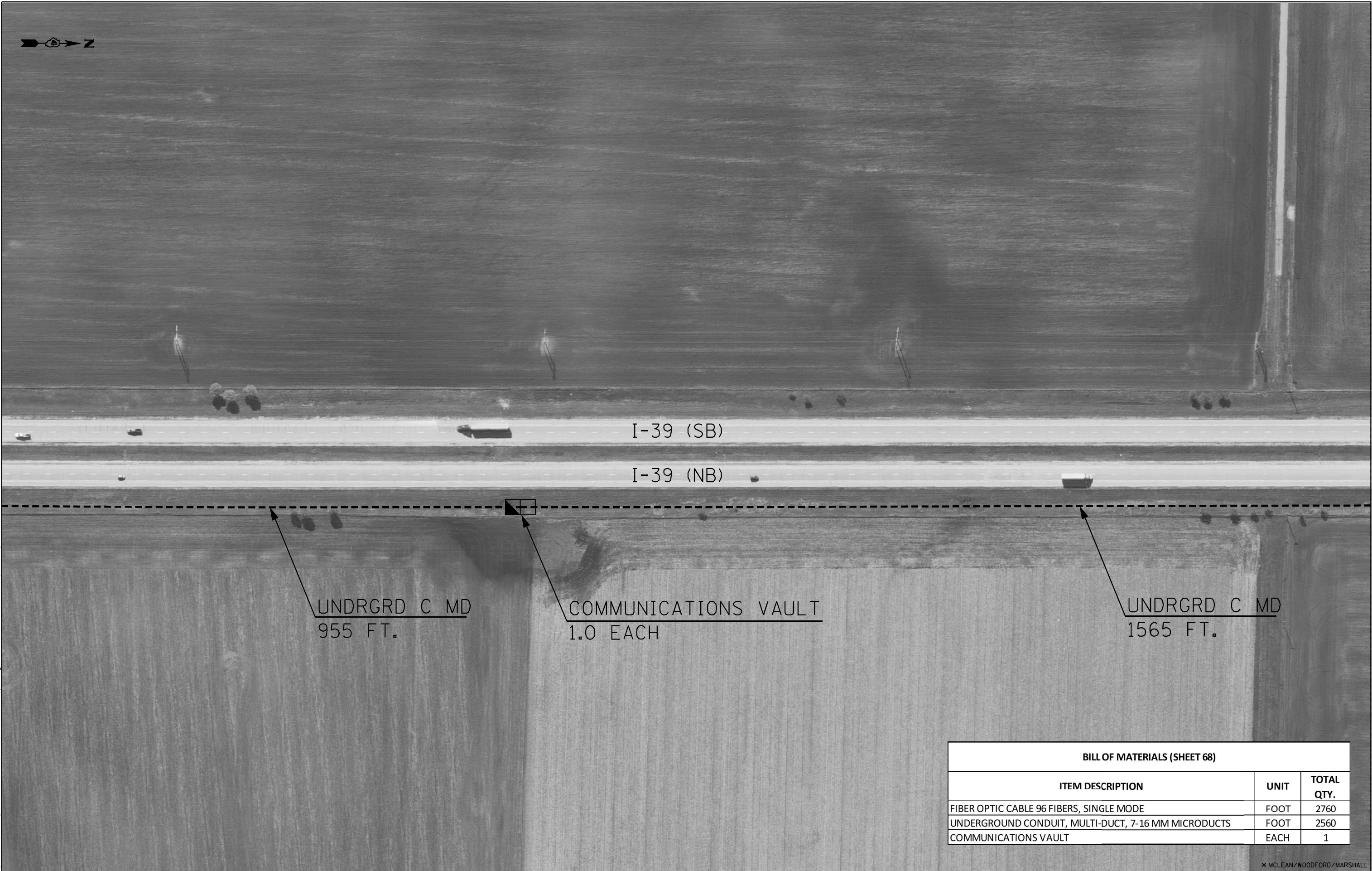
BILL OF MATERIALS (SHEET 67)		
ITEM DESCRIPTION	UNIT	TOTAL QTY.
FIBER OPTIC CABLE 96 FIBERS, SINGLE MODE	FOOT	2520
UNDERGROUND CONDUIT, MULTI-DUCT, 7-16 MM MICRODUCTS	FOOT	2520

\* MCLEAN/WOODFORD/MARSHALL

FILE NAME: D:\PROJECTS\2021\11-23-2021\11-23-2021.DWG	USER NAME = bourisba	DESIGNED -	REVISED -	STATE OF ILLINOIS DEPARTMENT OF TRANSPORTATION	FIBER OPTIC CONDUIT AND CABLE PROJECT I-39 (FROM BLOOMINGTON TO WENONA) CONTINUED				F.A.I. RTE.	SECTION	COUNTY	TOTAL SHEETS	SHEET NO.
		DRAWN -	REVISED -						39	[62-2]:102(1-4):57(2-4)]ITS	*	79	67
	PLOT SCALE = 160,0000 ' / in.	CHECKED -	REVISED -		CONTRACT NO. 68G20								
	PLOT DATE = 2/3/2021	DATE -	REVISED -										
					NOT TO SCALE	SHEET 67	OF 79 SHEETS	ILLINOIS FED. AID PROJECT					



MODEL: Default  
FILE: \\mlls\c:\projects\68g20\68g20.dwg  
PROJECT: 68G20 (FROM BLOOMINGTON TO WENONA) CONTINUED  
SHEET: 68 OF 79  
DATE: 2/3/2021



BILL OF MATERIALS (SHEET 68)		
ITEM DESCRIPTION	UNIT	TOTAL QTY.
FIBER OPTIC CABLE 96 FIBERS, SINGLE MODE	FOOT	2760
UNDERGROUND CONDUIT, MULTI-DUCT, 7-16 MM MICRODUCTS	FOOT	2560
COMMUNICATIONS VAULT	EACH	1

\* MCLEAN/WOODFORD/MARSHALL

	USER NAME = bourisba	DESIGNED -	REVISED -	STATE OF ILLINOIS DEPARTMENT OF TRANSPORTATION	FIBER OPTIC CONDUIT AND CABLE PROJECT I-39 (FROM BLOOMINGTON TO WENONA) CONTINUED	NOT TO SCALE	SHEET 68 OF 79 SHEETS	F.A.I. RTE. SECTION COUNTY TOTAL SHEETS SHEET NO.		
	PLOT SCALE = 160,000' / in.	DRAWN -	REVISED -					39	[62-2];102(1-4);57(2-4)]ITS	* 79 68
	PLOT DATE = 2/3/2021	CHECKED -	REVISED -					CONTRACT NO. 68G20		
		DATE -	REVISED -					ILLINOIS FED. AID PROJECT		



I-39 (NB)

UNDRGRD C MD  
2435 FT.

UNDRGRD C MD  
85 FT.

COMMUNICATIONS VAULT  
1.0 EACH

CO RD 350 N

BILL OF MATERIALS (SHEET 69)		
ITEM DESCRIPTION	UNIT	TOTAL QTY.
FIBER OPTIC CABLE 96 FIBERS, SINGLE MODE	FOOT	2720
UNDERGROUND CONDUIT, MULTI-DUCT, 7-16 MM MICRODUCTS	FOOT	2520
COMMUNICATIONS VAULT	EACH	1

\* MCLEAN/WOODFORD/MARSHALL

USER NAME = bourisba	DESIGNED -	REVISED -	STATE OF ILLINOIS DEPARTMENT OF TRANSPORTATION	FIBER OPTIC CONDUIT AND CABLE PROJECT I-39 (FROM BLOOMINGTON TO WENONA) CONTINUED				F.A.I. RTE.	SECTION	COUNTY	TOTAL SHEETS	SHEET NO.
	DRAWN -	REVISED -						39	[62-2];102(1-4);57(2-4)]ITS	*	79	69
PLOT SCALE = 160,0000 ' / in.	CHECKED -	REVISED -						CONTRACT NO. 68G20				
PLOT DATE = 2/3/2021	DATE -	REVISED -		NOT TO SCALE	SHEET 69	OF 79 SHEETS			ILLINOIS	FED. AID PROJECT		



MODEL: Default  
FILE NAME: s:\projects\ammonia.dot\illinois\pwr\DOT Documents\DOT Office\District 4\Projects\DL\_68GXX\CADD\ra\CAD\hearts\Consult\_dba\1130.dgn



BILL OF MATERIALS (SHEET 70)		
ITEM DESCRIPTION	UNIT	TOTAL QTY.
FIBER OPTIC CABLE 96 FIBERS, SINGLE MODE	FOOT	2520
UNDERGROUND CONDUIT, MULTI-DUCT, 7-16 MM MICRODUCTS	FOOT	2520

\* MCLEAN/ WOODFORD/ MARSHALL

	USER NAME = bourisba	DESIGNED -	REVISED -	STATE OF ILLINOIS DEPARTMENT OF TRANSPORTATION	FIBER OPTIC CONDUIT AND CABLE PROJECT I-39 (FROM BLOOMINGTON TO WENONA) CONTINUED			F.A.I. RTE.	SECTION	COUNTY	TOTAL SHEETS	SHEET NO.	
		DRAWN -	REVISED -					39	[62-2];102(1-4);57(2-4)]ITS	*	79	70	
	PLOT SCALE = 160,0000 ' / in.	CHECKED -	REVISED -		CONTRACT NO. 68G20								
	PLOT DATE = 2/3/2021	DATE -	REVISED -		NOT TO SCALE	SHEET 70 OF 79 SHEETS	ILLINOIS FED. AID PROJECT						





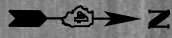
UNDRGRD C MD  
40 FT.

\* MCLEAN/WOODFORD/MARSHALL

FILE NAME: D:\PROJECTS\2021\11-23-2021\11-23-2021.DWG	USER NAME = bourisba	DESIGNED -	REVISED -	STATE OF ILLINOIS DEPARTMENT OF TRANSPORTATION	FIBER OPTIC CONDUIT AND CABLE PROJECT I-39 (FROM BLOOMINGTON TO WENONA) CONTINUED				F.A.I. RTE.	SECTION	COUNTY	TOTAL SHEETS	SHEET NO.
		DRAWN -	REVISED -						39	[62-2];102(1-4);57(2-4)]ITS	*	79	71
	PLOT SCALE = 160,0000 ' / in.	CHECKED -	REVISED -						CONTRACT NO. 68G20				
	PLOT DATE = 2/3/2021	DATE -	REVISED -		NOT TO SCALE	SHEET 71	OF 79 SHEETS						
								ILLINOIS	FED. AID	PROJECT			



MODEL: Default  
FILE NAME: s:\projects\ammonia.dot\illinois\pww\DOT Documents\IDOT Office\District 4\Projects\ID4\_68GXXCADD\sta\CAD\Sheet\Consult\_dba\1130.dgn



BILL OF MATERIALS (SHEET 72)			
ITEM DESCRIPTION		UNIT	TOTAL QTY.
FIBER OPTIC CABLE 96 FIBERS, SINGLE MODE		FOOT	2520
UNDERGROUND CONDUIT, MULTI-DUCT, 7-16 MM MICRODUCTS		FOOT	2520

\* MCLEAN/WOODFORD/MARSHALL

	USER NAME = bourisba	DESIGNED -	REVISED -	STATE OF ILLINOIS DEPARTMENT OF TRANSPORTATION	FIBER OPTIC CONDUIT AND CABLE PROJECT I-39 (FROM BLOOMINGTON TO WENONA) CONTINUED	NOT TO SCALE	SHEET 72 OF 79 SHEETS		F.A.I. RTE.	SECTION	COUNTY	TOTAL SHEETS	SHEET NO.
	PLOT SCALE = 160,0000 ' / in.	DRAWN -	REVISED -						39	[62-2);102(1-4);57(2-4)]ITS	*	79	72
	PLOT DATE = 2/3/2021	CHECKED -	REVISED -						CONTRACT NO. 68G20				
		DATE -	REVISED -						ILLINOIS FED. AID PROJECT				





I-39 (NB)

UNDRGRD C MD  
2075 FT.

COMMUNICATIONS VAULT  
1.0 EACH

BILL OF MATERIALS (SHEET 73)		
ITEM DESCRIPTION	UNIT	TOTAL QTY.
FIBER OPTIC CABLE 96 FIBERS, SINGLE MODE	FOOT	2720
UNDERGROUND CONDUIT, MULTI-DUCT, 7-16 MM MICRODUCTS	FOOT	2520
COMMUNICATIONS VAULT	EACH	1

\* MCLEAN/WOODFORD/MARSHALL

FILE NAME: D:\PROJECTS\2021\11-23-2021\11-23-2021.DWG	USER NAME = bourisba	DESIGNED -	REVISED -	STATE OF ILLINOIS DEPARTMENT OF TRANSPORTATION	FIBER OPTIC CONDUIT AND CABLE PROJECT I-39 (FROM BLOOMINGTON TO WENONA) CONTINUED				F.A.I. RTE.	SECTION	COUNTY	TOTAL SHEETS	SHEET NO.
		DRAWN -	REVISED -						39	[62-2];102(1-4);57(2-4)]ITS	*	79	73
	PLOT SCALE = 160,000 ' / in.	CHECKED -	REVISED -						CONTRACT NO. 68G20				
	PLOT DATE = 2/3/2021	DATE -	REVISED -										
						NOT TO SCALE	SHEET 73	OF 79 SHEETS					
									ILLINOIS	FED. AID	PROJECT		





UNDRGRD C MD  
130 FT.

\* MCLEAN/WOODFORD/MARSHALL

FILE NAME: 39-1-2021-102-1-4-57-2-4-ITS	USER NAME = bourisba	DESIGNED -	REVISED -	STATE OF ILLINOIS DEPARTMENT OF TRANSPORTATION	FIBER OPTIC CONDUIT AND CABLE PROJECT I-39 (FROM BLOOMINGTON TO WENONA) CONTINUED				F.A.I. RTE.	SECTION	COUNTY	TOTAL SHEETS	SHEET NO.
		DRAWN -	REVISED -						39	[62-2];102(1-4);57(2-4)]ITS	*	79	74
	PLOT SCALE = 160,000 ' / in.	CHECKED -	REVISED -						CONTRACT NO. 68G20				
	PLOT DATE = 2/3/2021	DATE -	REVISED -		NOT TO SCALE				SHEET 74	OF 79 SHEETS			
					ILLINOIS				FED. AID PROJECT				



MODEL: Default  
FILE NAME: g:\projects\68g20\68g20.dwg  
PROJECT: I-39 (FROM BLOOMINGTON TO WENONA) CONTINUED  
SHEET: 75 OF 79  
DATE: 2/3/2021



BILL OF MATERIALS (SHEET 75)		
ITEM DESCRIPTION	UNIT	TOTAL QTY.
FIBER OPTIC CABLE 96 FIBERS, SINGLE MODE	FOOT	2520
UNDERGROUND CONDUIT, MULTI-DUCT, 7-16 MM MICRODUCTS	FOOT	2520

				STATE OF ILLINOIS DEPARTMENT OF TRANSPORTATION		FIBER OPTIC CONDUIT AND CABLE PROJECT I-39 (FROM BLOOMINGTON TO WENONA) CONTINUED		F.A.I. RTE.: 39	SECTION: [62-2];102(1-4);57(2-4)]ITS	COUNTY: *	TOTAL SHEETS: 79	SHEET NO.: 75
						NOT TO SCALE		SHEET 75 OF 79 SHEETS		ILLINOIS FED. AID PROJECT		





I-39 (NB)

UNDRGRD C MD  
85 FT.

BILL OF MATERIALS (SHEET 76)		
ITEM DESCRIPTION	UNIT	TOTAL QTY.
FIBER OPTIC CABLE 96 FIBERS, SINGLE MODE	FOOT	2785
UNDERGROUND CONDUIT, MULTI-DUCT, 7-16 MM MICRODUCTS	FOOT	2585
COMMUNICATIONS VAULT	EACH	1

\* MCLEAN/WOODFORD/MARSHALL

FILE NAME: D:\PROJECTS\2021\20210203\20210203.DWG

USER NAME = bourisba	DESIGNED -	REVISED -	STATE OF ILLINOIS DEPARTMENT OF TRANSPORTATION	FIBER OPTIC CONDUIT AND CABLE PROJECT I-39 (FROM BLOOMINGTON TO WENONA) CONTINUED				F.A.I. RTE.	SECTION	COUNTY	TOTAL SHEETS	SHEET NO.
	DRAWN -	REVISED -		39	[62-2]:102(1-4);57(2-4)]ITS	*	79	76				
PLOT SCALE = 160,0000 ' / in.	CHECKED -	REVISION -						CONTRACT NO. 68G20				
PLOT DATE = 2/3/2021	DATE -	REVISED -		NOT TO SCALE	SHEET 76	OF	79 SHEETS					
				ILLINOIS			FED. AID PROJECT					



IL 17 / 700-N RD

EXIT 35 (LACON/WENONA - IL 17)

I-39 (SB)

I-39 (NB)

COMMUNICATIONS VAULT  
1.0 EACH

UNDRGRD C MD  
160 FT. (PUSHED  
UNDER STRUCTURE)

**BILL OF MATERIALS (SHEET 77)**

ITEM DESCRIPTION	UNIT	TOTAL QTY.
FIBER OPTIC CABLE 96 FIBERS, SINGLE MODE	FOOT	1215
UNDERGROUND CONDUIT, MULTI-DUCT, 7-16 MM MICRODUCTS	FOOT	1015
COMMUNICATIONS VAULT	EACH	1

\* MCLEAN/WOODFORD/MARSHALL

	USER NAME = bourisba	DESIGNED -	REVISED -	STATE OF ILLINOIS DEPARTMENT OF TRANSPORTATION	FIBER OPTIC CONDUIT AND CABLE PROJECT I-39 (FROM BLOOMINGTON TO WENONA) CONTINUED				F.A.I. RTE.	SECTION	COUNTY	TOTAL SHEETS	SHEET NO.
		DRAWN -	REVISED -		39	[62-2];102(1-4);57(2-4)]ITS	*	79	77				
PLOT SCALE = 160,0000' / in.	CHECKED -	REVISED -							CONTRACT NO. 68G20				
PLOT DATE = 2/3/2021	DATE -	REVISED -			NOT TO SCALE	SHEET 77	OF 79 SHEETS		ILLINOIS FED. AID PROJECT				



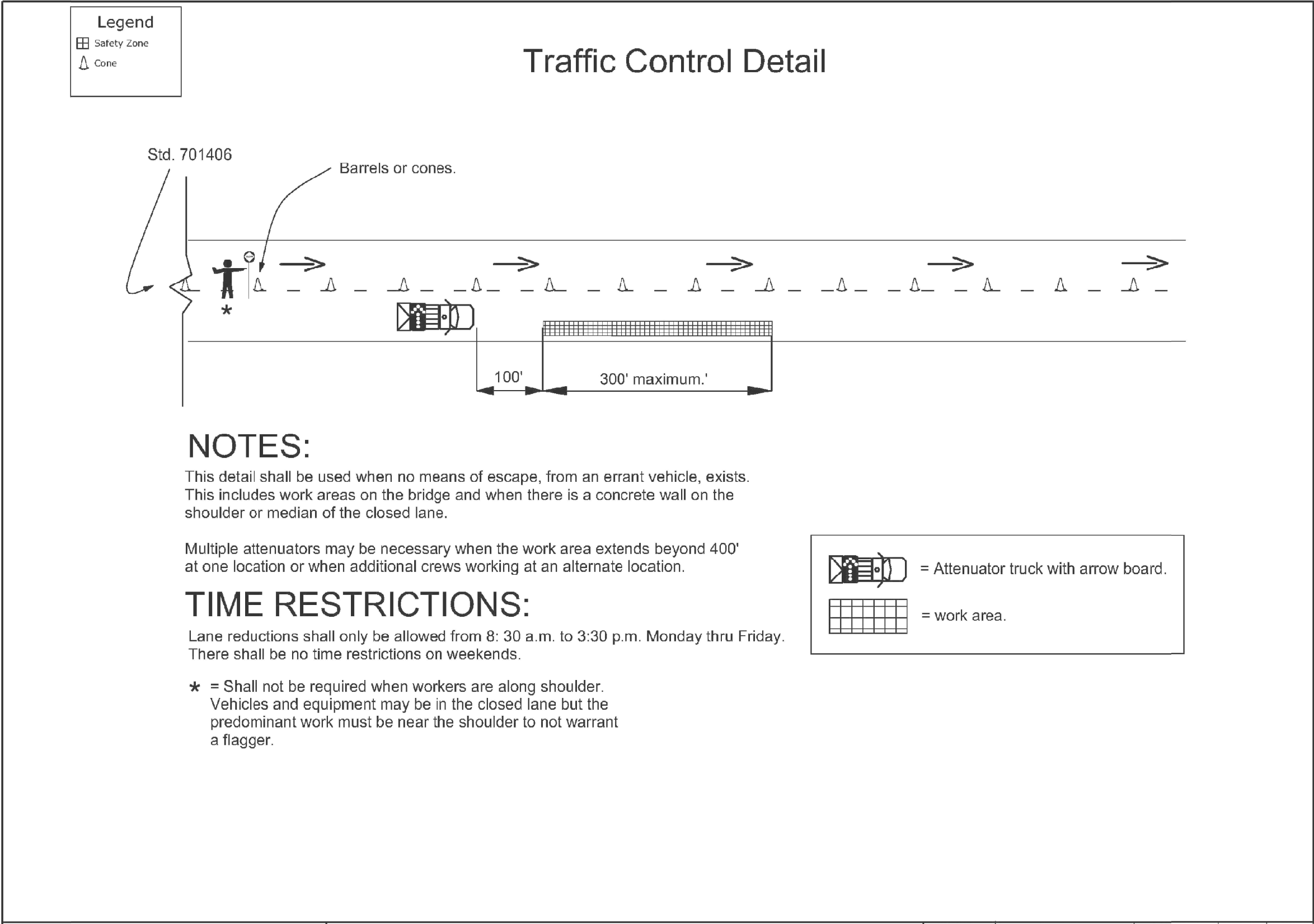
RESERVED

Model: Default  
File Name: C:\Users\howalder\Desktop\New folder\Conduit - plan.dgn

				STATE OF ILLINOIS DEPARTMENT OF TRANSPORTATION	BRIDGE CONDUIT ATTACHMENT BRACKET DETAILS			* MCLEAN/WOODFORD/MARSHALL			
	USER NAME = howalder	DESIGNED -	REVISED -					F.A.I. RTE.	SECTION	COUNTY	TOTAL SHEETS
		DRAWN -	REVISED -					39	(62-2);102(1-4);57(2-4)ITS	*	79
	PLOT SCALE = 160.0000 ' / in.	CHECKED -	REVISED -					CONTRACT NO. 68G20			
	PLOT DATE = 2/4/2021	DATE -	REVISED -		NOT TO SCALE	SHEET 78	OF 79 SHEETS	ILLINOIS FED. AID PROJECT			



Model: Default  
File Name: C:\Users\howald\OneDrive\Documents\plan4130.dgn



THE COST OF ATTENUATOR TRUCK SHALL BE INCLUDED IN THE BID PRICE FOR TRAFFIC CONTROL AND PROTECTION, STANDARD 701406 (SPECIAL)

\* MCLEAN/WOODFORD/MARSHALL

USER NAME = howald	DESIGNED -	REVISED -
DRAWN -	REVISED -	
PLOT SCALE = 160.0000 ' / in.	CHECKED -	REVISED -
PLOT DATE = 2/4/2021	DATE -	REVISED -

STATE OF ILLINOIS  
DEPARTMENT OF TRANSPORTATION

TRAFFIC CONTROL DETAIL

NOT TO SCALE SHEET 79 OF 79 SHEETS

F.A.I. RTE.	SECTION	COUNTY	TOTAL SHEETS	SHEET NO.
39	(62-2);102(1-4);57(2-4)ITS	*	79	79
CONTRACT NO. 68G20				
ILLINOIS FED. AID PROJECT				