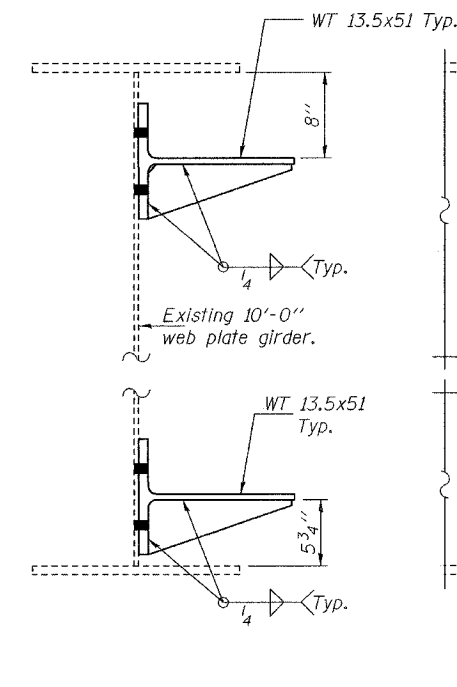
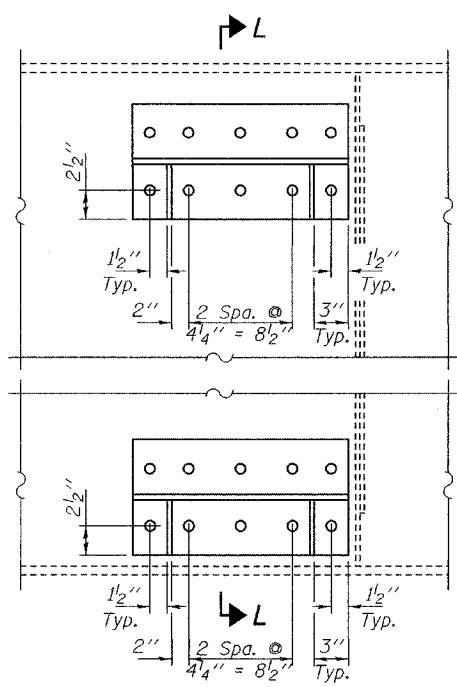
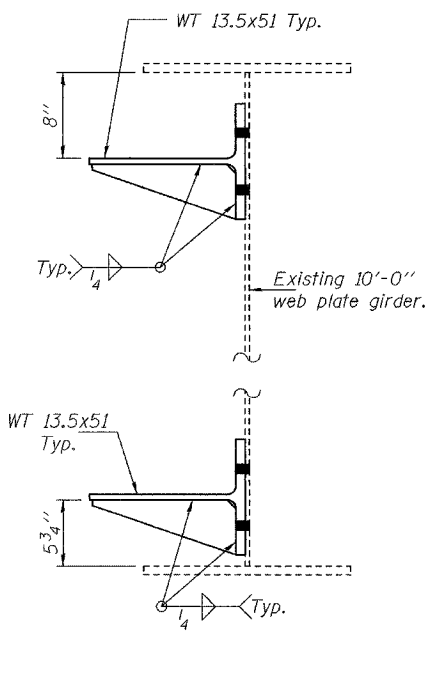
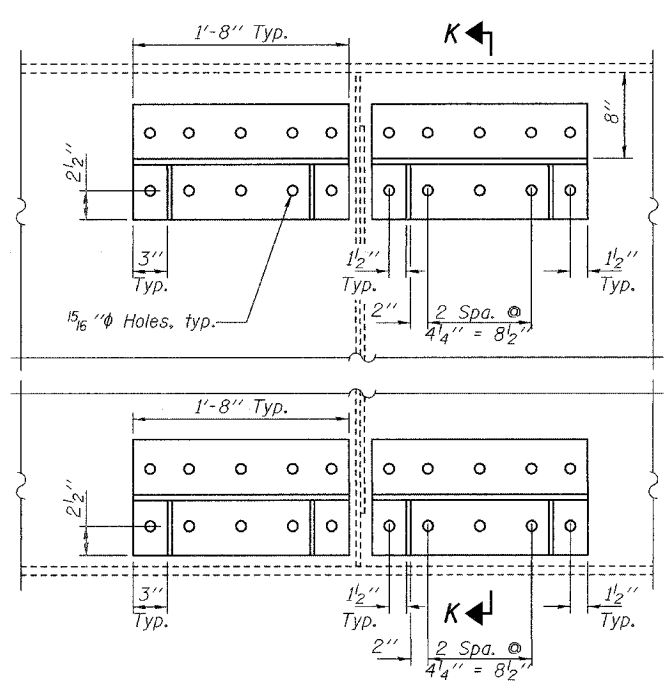
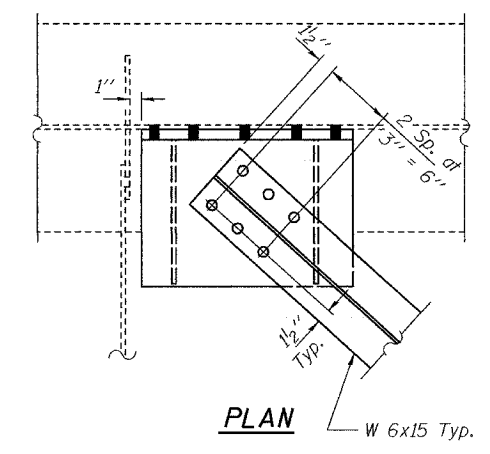
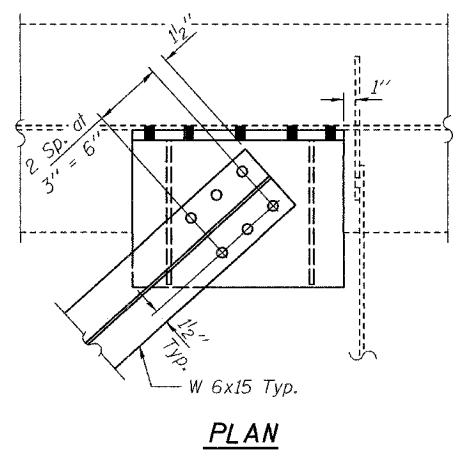
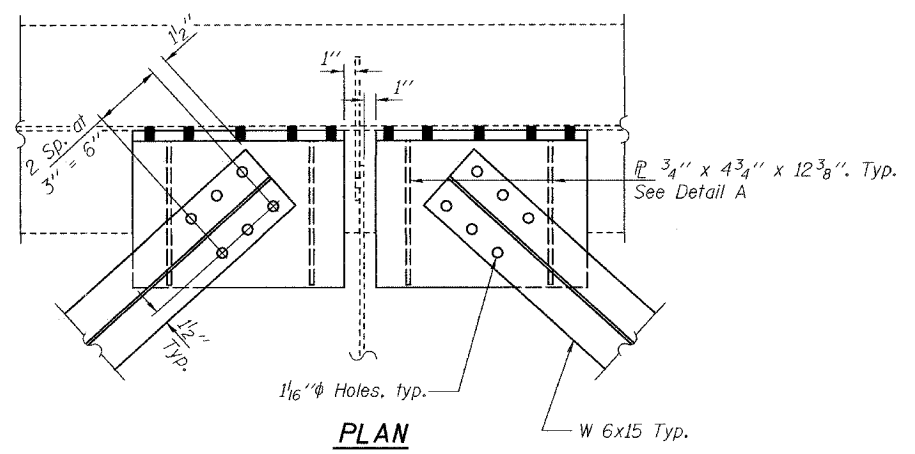


98846

STATE OF ILLINOIS
DEPARTMENT OF TRANSPORTATION

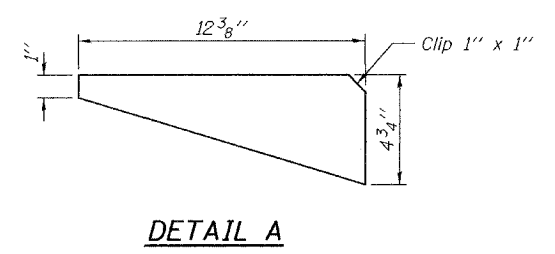
ROUTE NO.	SECTION	COUNTY	SHEET NO.	SHEET	SHEET NO. 7 13 SHEETS
F.A.I. 57	(02-1B)I	ALEXANDER	11	17	
FED. ROAD DIST. NO. 7	ILLINOIS	FED. AID PROJECT-			



REPAIR DETAIL b
Detail b' similar by rotation
(8 Locations ea. b & b', per structure)

REPAIR DETAIL c
Detail c' similar by rotation
(2 Locations ea. c & c', per structure)

REPAIR DETAIL d
Detail d' similar by rotation
(2 Locations ea. d & d', per structure)



REPAIR DETAILS
I-57 OVER CACHE RIVER
F.A.I. RTE. 57 - SEC. (02-1B)I
ALEXANDER COUNTY
STATION 943+72.00
SN 002-0003 (NB) & 002-0004 (SB)

DESIGNED	JSB	<p>MARCH 8, 2004</p> <p>EXAMINED <i>John A. Morris</i> ENGINEER OF STRUCTURAL SERVICES</p> <p>PASSED</p> <p>ENGINEER OF BRIDGES AND STRUCTURES</p>
CHECKED	VHV	
DRAWN	ballva	
CHECKED	JSB VHV	