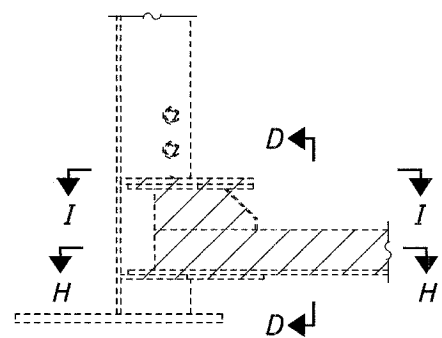


98846

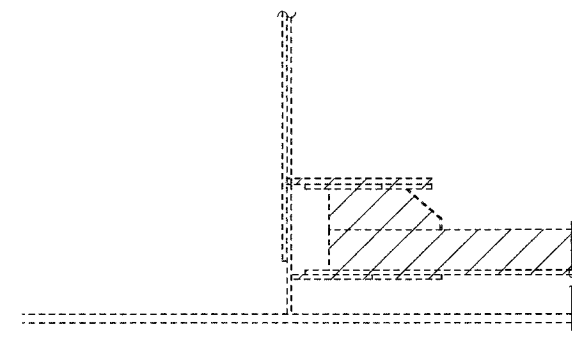
STATE OF ILLINOIS
DEPARTMENT OF TRANSPORTATION

ROUTE NO.	SECTION	COUNTY	SHEET NO.	SHEET	SHEET NO. 6
F.A.I. 57	02-1B)I	ALEXANDER	10	17	13 SHEETS
FED. ROAD DIST. NO. 7	ILLINOIS	FED. AID PROJECT-			



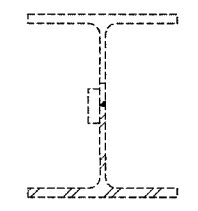
TYPICAL CONNECTION AT VERTICAL STIFFENER

Cross-frame and cross-frame gusset left out for clarity

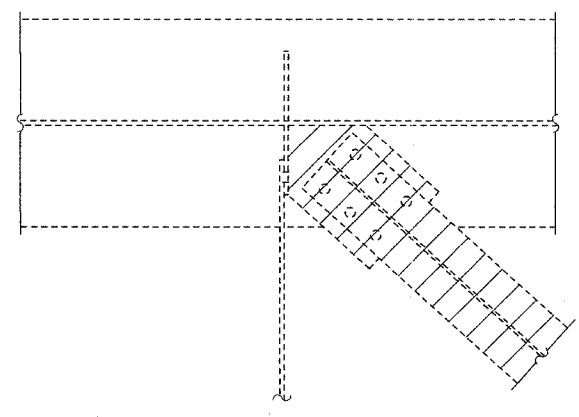


SECTION J-J

1974 connection retrofit
Cross-frame angles left out for clarity

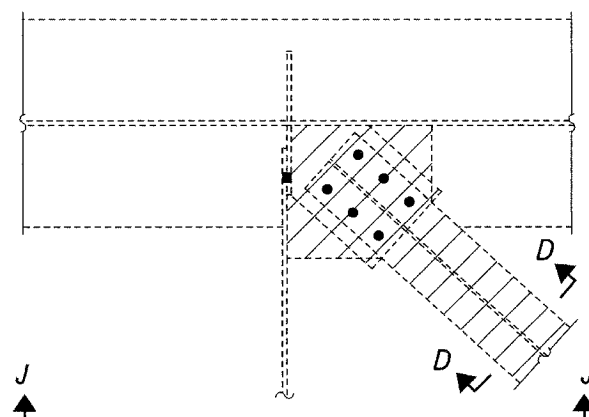


SECTION D-D



SECTION H-H

Original horizontal cross-bracing connection
Cross-frame angles left out for clarity



SECTION I-I

1974 connection retrofit
Cross-frame angles left out for clarity

REPAIR LOCATION d

Location d' similar by rotation
(2 Locations ea. d & d')
(Per structure, top & bottom for Sec. H-H.)
(Per structure, bottom only for Sec. I-I)

Notes:

Hatched areas indicate removal of existing lateral bracing and connection plates. Cost included with Structural Steel Removal.
Remove existing connection plates,
grind smooth all weld material remaining on the web and stiffener, and inspect ground surfaces for cracks using dye penetrant or magnetic particle testing. Any cracks found shall be identified and reported to the Bureau of Bridges and Structures for further disposition. Cost included with Structural Steel Removal.

DESIGNED	JSB
CHECKED	VHV
DRAWN	balva
CHECKED	JSB VHV

MARCH 8, 2004
EXAMINED *John A. Morris*
ENGINEER OF STRUCTURAL SERVICES
PASSED
ENGINEER OF BRIDGES AND STRUCTURES

REPAIR DETAILS
I-57 OVER CACHE RIVER
F.A.I. RTE. 57 - SEC. (02-1B)I
ALEXANDER COUNTY
STATION 943+72.00
SN 002-0003 (NB) & 002-0004 (SB)