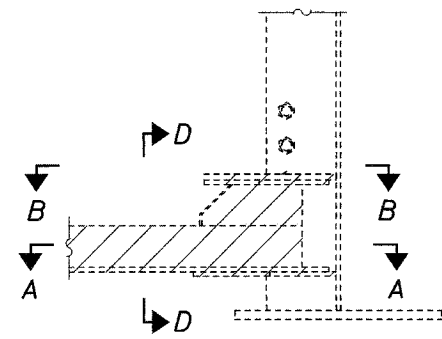


98846

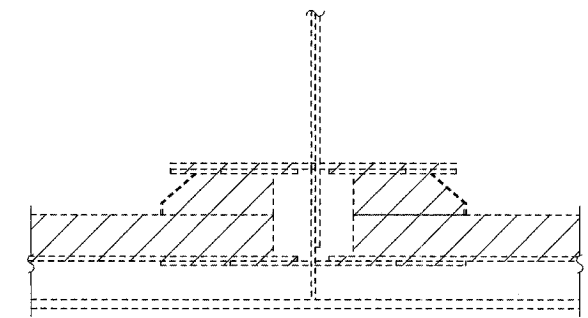
STATE OF ILLINOIS  
DEPARTMENT OF TRANSPORTATION

ROUTE NO.	SECTION	COUNTY	DISTRICT	SHEET NO.	SHEET NO. 5 13 SHEETS
F.A.I. 57	(02-1B)I	ALEXANDER	9	17	
FED. ROAD DIST. NO. 7	ILLINOIS	FED. AID PROJECT-			



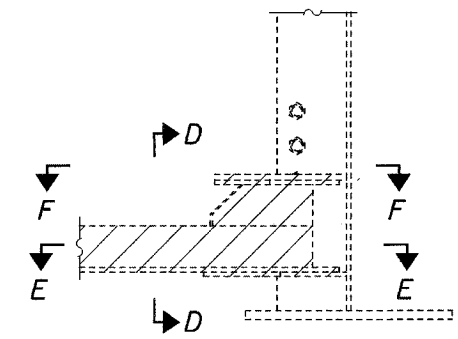
**TYPICAL CONNECTION AT VERTICAL STIFFENER**

Cross-frame and cross-frame gusset left out for clarity



**SECTION C-C**

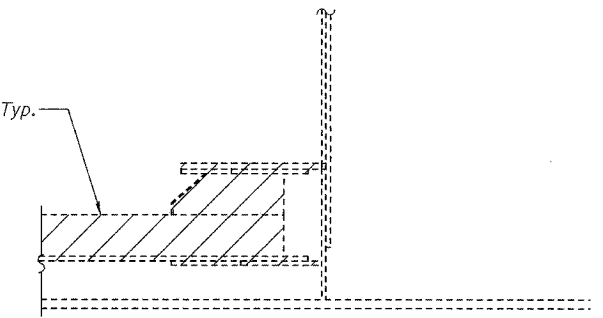
1974 connection retrofit  
Cross-frame angles left out for clarity



**TYPICAL CONNECTION AT VERTICAL STIFFENER**

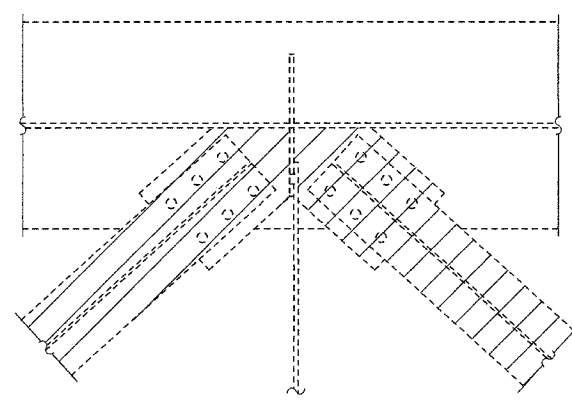
Cross-frame and cross-frame gusset left out for clarity

ST4WF12. Typ.



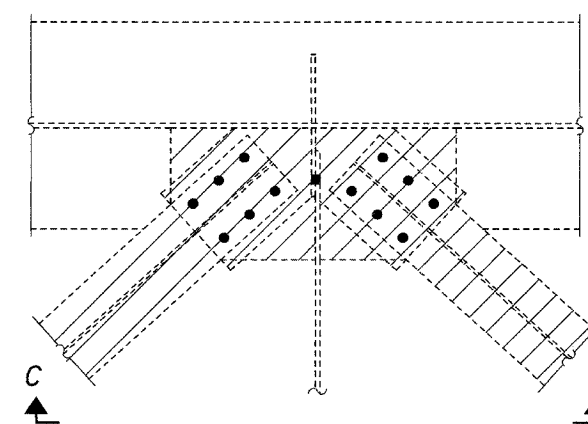
**SECTION G-G**

1974 connection retrofit  
Cross-frame angles left out for clarity



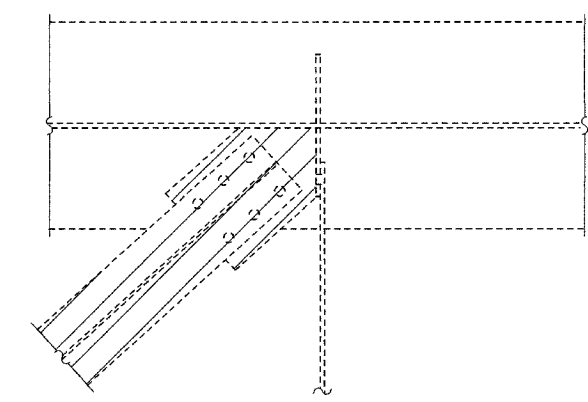
**SECTION A-A**

Original horizontal cross-bracing connection  
Cross-frame angles left out for clarity



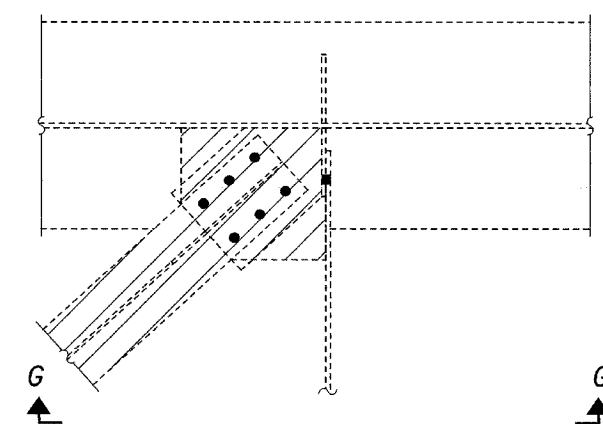
**SECTION B-B**

1974 connection retrofit  
Cross-frame angles left out for clarity



**SECTION E-E**

Original horizontal cross-bracing connection  
Cross-frame angles left out for clarity

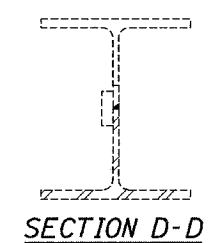


**SECTION F-F**

1974 connection retrofit  
Cross-frame angles left out for clarity

**REPAIR LOCATION b**  
Location b' similar by rotation  
(8 Locations ea. b & b')  
(Per structure, top & bottom for Sec. A-A.)  
(Per structure, bottom only for Sec. B-B)

**REPAIR LOCATION c**  
Location c' similar by rotation  
(2 Locations ea. c & c')  
(Per structure, top & bottom for Sec. E-E.)  
(Per structure, bottom only for Sec. F-F)



**SECTION D-D**

**Notes:**  
Hatched areas indicate removal of existing lateral bracing and connection plates. Cost included with Structural Steel Removal.  
Remove existing connection plates, grind smooth all weld material remaining on the web and stiffener, and inspect ground surfaces for cracks using dye penetrant or magnetic particle testing. Any cracks found shall be identified and reported to the Bureau of Bridges and Structures for further disposition. Cost included with Structural Steel Removal.

**REPAIR DETAILS**  
**I-57 OVER CACHE RIVER**  
**F.A.I. RTE. 57 - SEC. (02-1B)I**  
**ALEXANDER COUNTY**  
**STATION 943+72.00**  
**SN 002-0003 (NB) & 002-0004 (SB)**

DESIGNED	JSB
CHECKED	VHV
DRAWN	balva
CHECKED	JSB VHV

MARCH 8, 2004  
EXAMINED *John A. Morris*  
ENGINEER OF STRUCTURAL SERVICES  
PASSED  
ENGINEER OF BRIDGES AND STRUCTURES