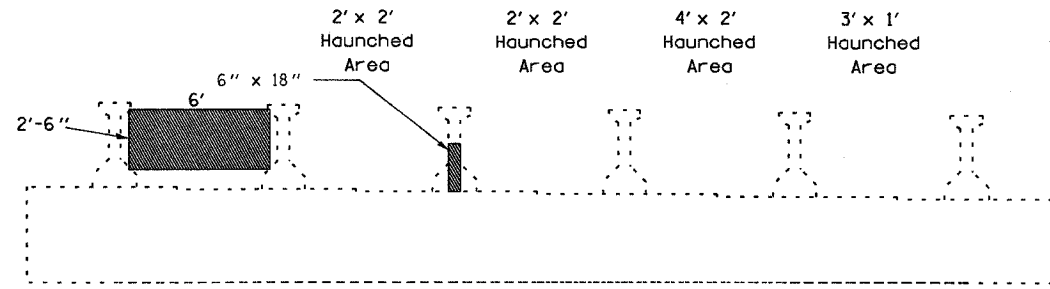


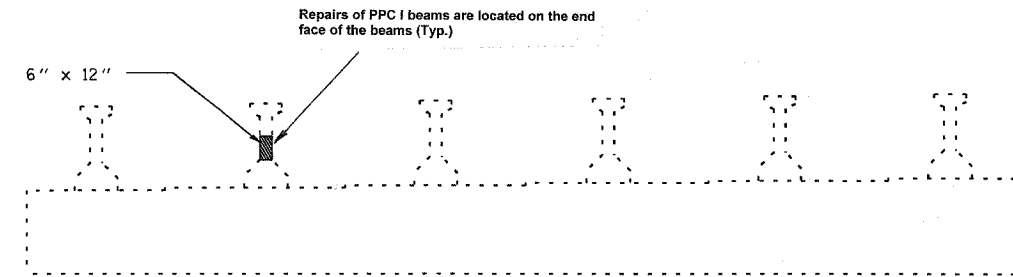
STATE OF ILLINOIS
DEPARTMENT OF TRANSPORTATION

P.L.L. SHEET	SECTION	COUNTY	TOTAL SHEETS	SHEET NO.
24	#	JOHNSON	150	150b
STA.		TO STA.		
FED. ROAD DIST. NO.		ILLINOIS	FED. AID PROJECT	

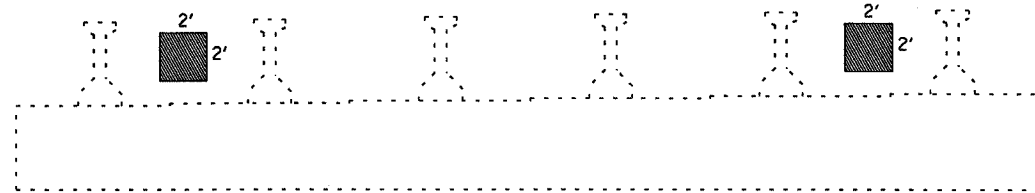
* BSMAR FY04-3
98836



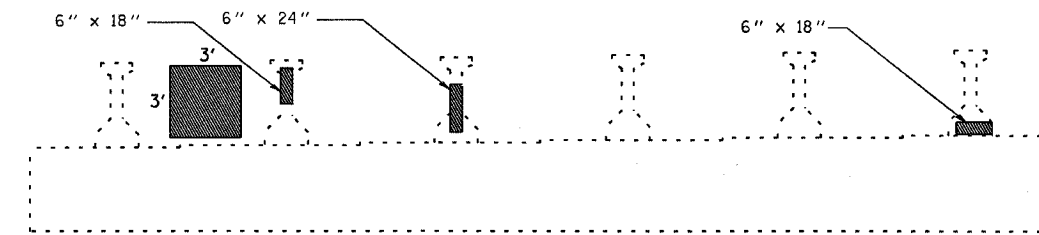
NORTH ABUT. OF 044-0043 (LOOKING NORTH)



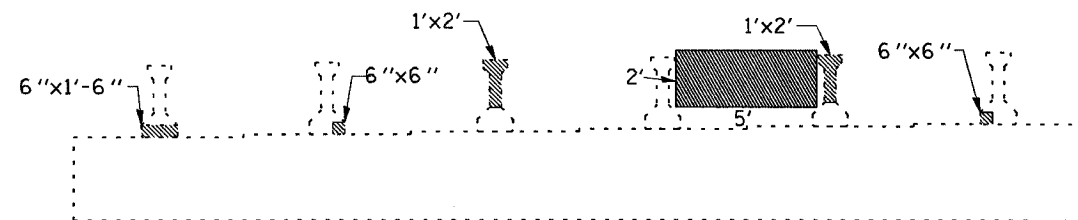
SOUTH ABUT. OF 044-0043 (LOOKING SOUTH)



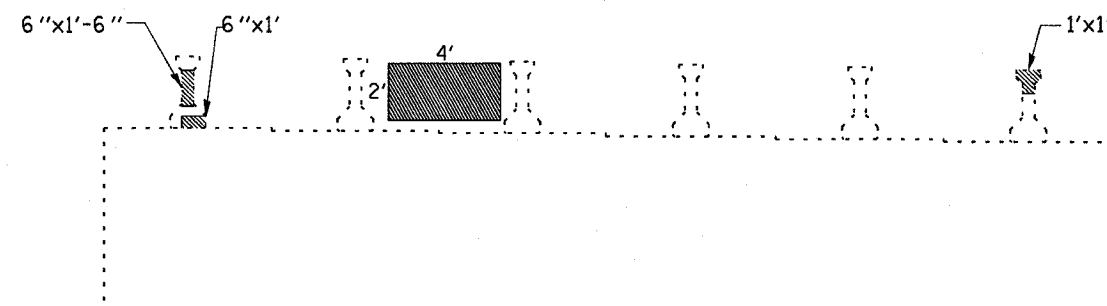
NORTH ABUT. OF 044-0044 (LOOKING NORTH)



SOUTH ABUT. OF 044-0044 (LOOKING SOUTH)




NORTH ABUT. STRUCTURE 044-0045 (LOOKING NORTH)



SOUTH ABUT. STRUCTURE 044-0045 (LOOKING SOUTH)

DESIGNED	MAS
CHECKED	MAS
DRAWN	TEB
CHECKED	MAS

 Polymer Modified Portland Cement Mortar

CONCRETE REPAIR
JOHNSON COUNTY
SN 044-0043
SN 044-0044
SN 044-0045