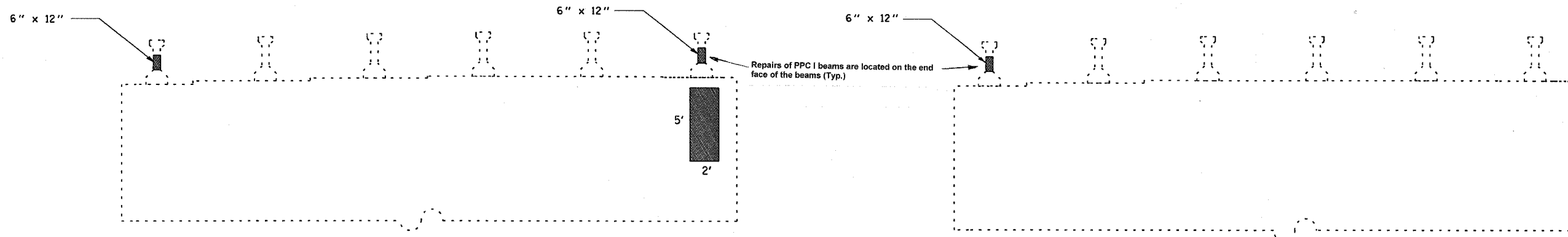


STATE OF ILLINOIS
DEPARTMENT OF TRANSPORTATION

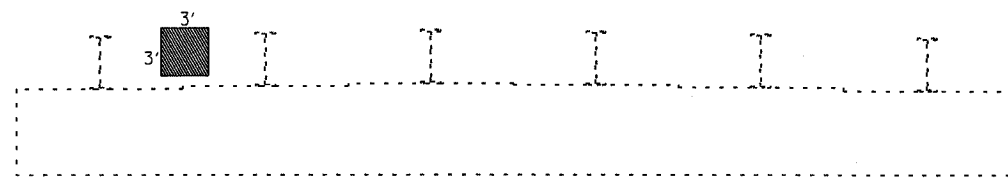
P.A. NO.	SECTION	COUNTY	TOTAL SHEETS	SHEET NO.
24	*	Johnson	150	150a
STA.	TO STA.			
FED. ROAD DIST. NO.	ILLINOIS	FED. AID PROJECT		

• BSMART FY04-3
98836

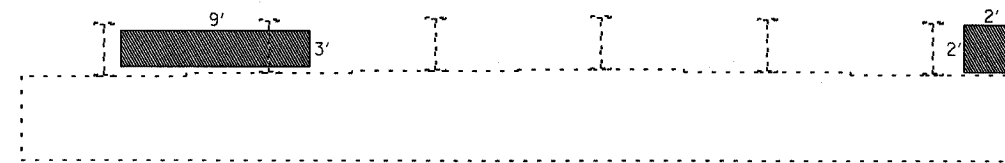


North Abut. of 044-0039 (Looking North)

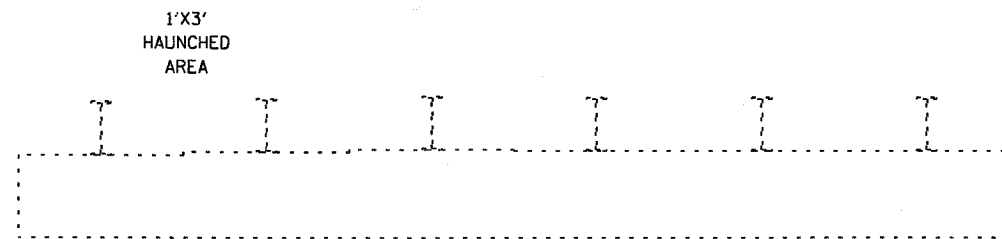
NORTH ABUT. OF 044-0040 (LOOKING NORTH)



NORTH ABUT. OF 044-0041 (LOOKING NORTH)



NORTH ABUT. OF 044-0042 (LOOKING NORTH)




SOUTH ABUT. OF 044-0042 (LOOKING SOUTH)

BILL OF MATERIAL

STRUCTURE NUMBER	POLYMER MODIFIED PORTLAND CEMENT (SQ FT)
044-0039	11
044-0040	0.5
044-0041	9
044-0042	34
044-0043	35.5
044-0044	23.5
044-0045	33
044-0046	22
044-0047	20
044-0048	60
044-0049	0
044-0050	9
TOTAL	258

CONCRETE REPAIR
JOHNSON COUNTY
SN 044-0039 & 0040
SN 044-0041 & 0042

DESIGNED	MAS
CHECKED	MAS
DRAWN	JMB
CHECKED	MAS

 Polymer Modified Portland Cement Mortar