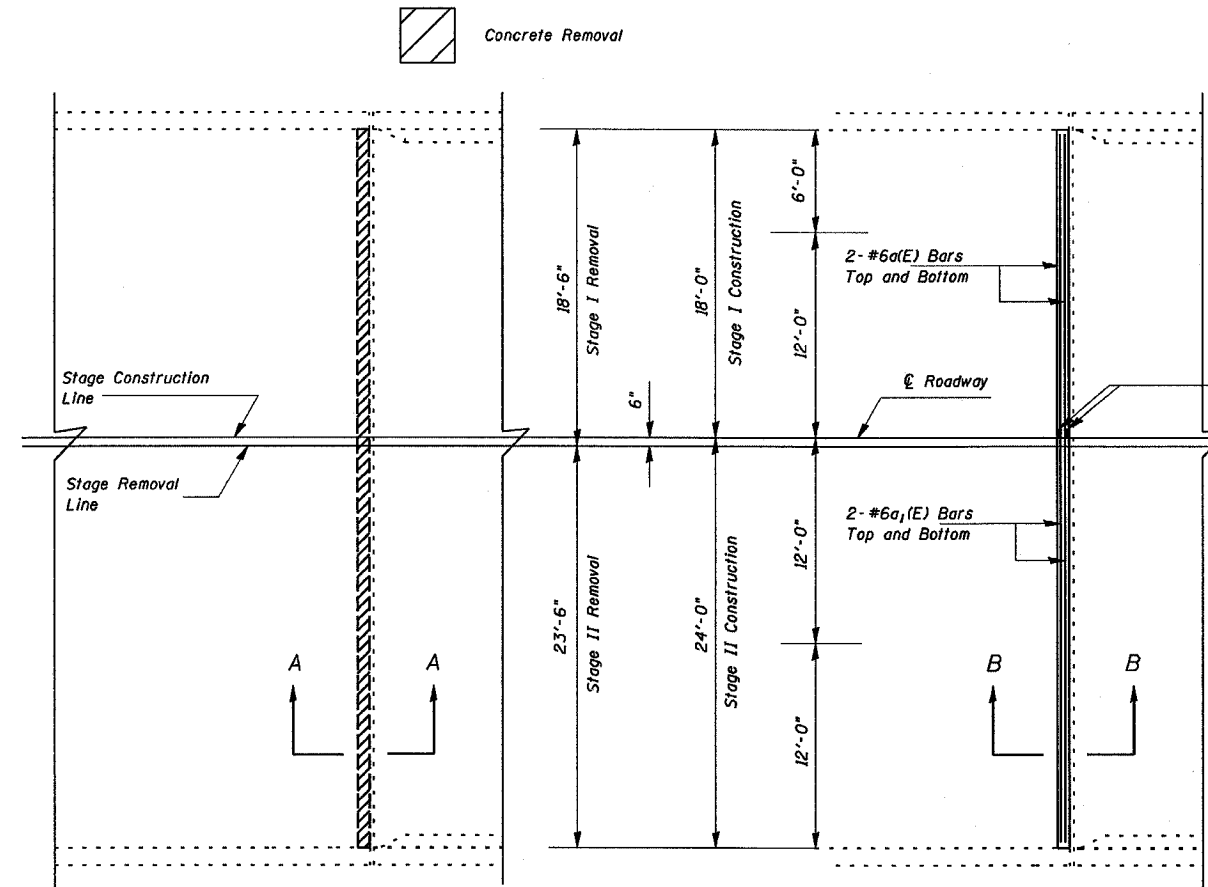


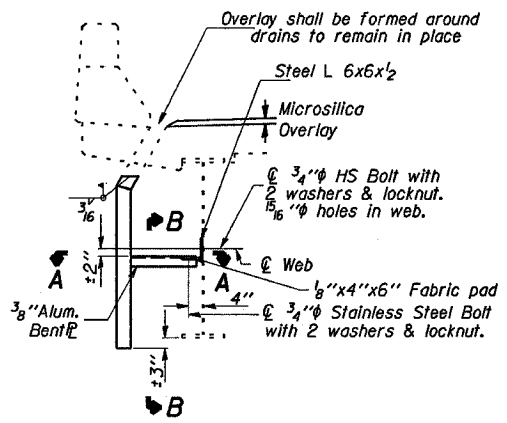
PLAN SHEET	SECTION	COUNTY	TOTAL SHEETS	SHEET NO.
24		JOHNSON	150	147
STA.	TO STA.			
FED. ROAD DIST. NO.	STATE	FED. AID PROJECT		

*BSMART FY04-3
98836

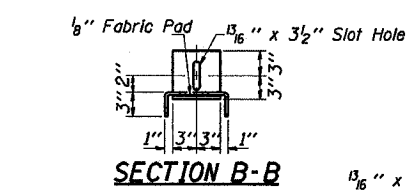


WEST ABUTMENT PLAN-EB
SHOWING CONCRETE REMOVAL

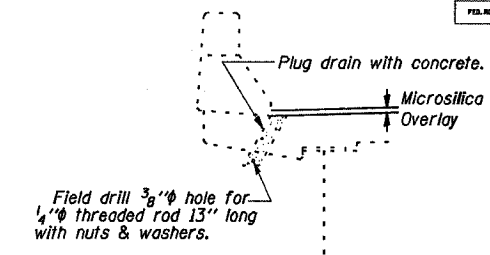
WEST ABUTMENT PLAN-EB
SHOWING CONCRETE SUPERSTRUCTURE



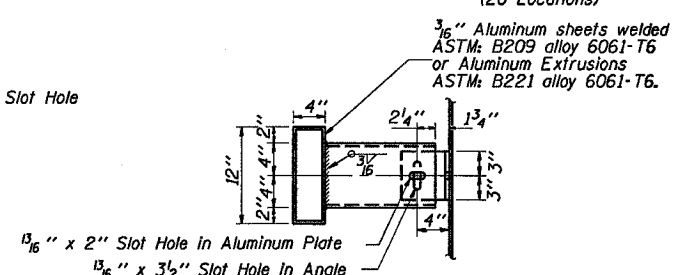
SECTION AT DRAIN
(20 Locations)



SECTION B-B
DRAIN EXTENSION DETAIL
(16 Locations)

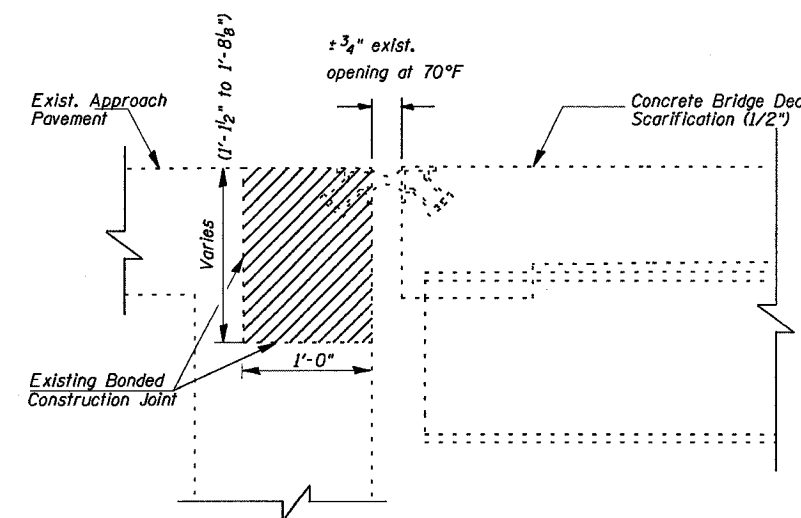


SECTION AT DRAIN
DRAIN ELIMINATION DETAIL
(20 Locations)

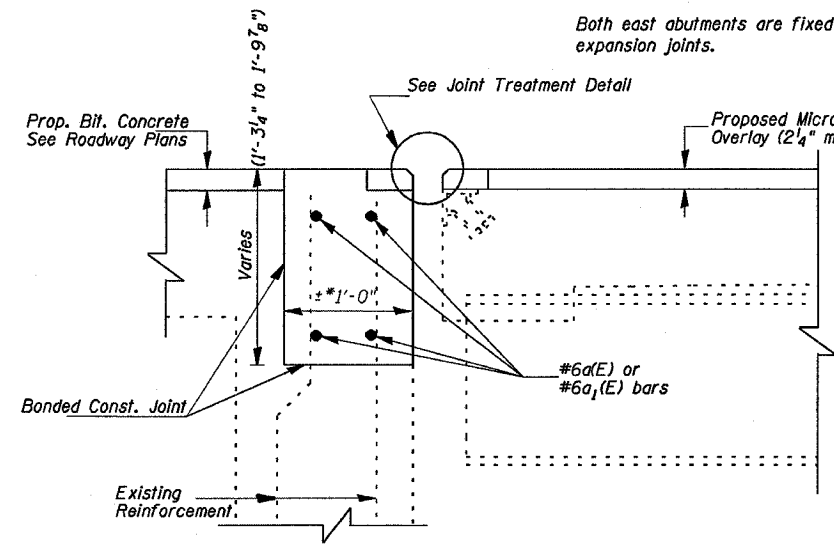


SECTION A-A

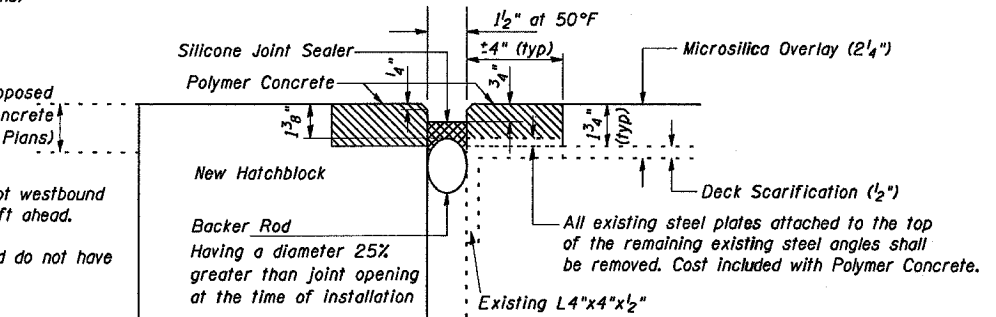
Note: Both west abutments typical except westbound west abutment is skewed 4°48' left ahead.
Both east abutments are fixed and do not have expansion joints.



SECTION A-A
Dimensions are at right angles



SECTION B-B
Dimensions are at right angles



JOINT TREATMENT

TYPICAL END OF SEAL TREATMENT AT EXPANSION JOINT

BILL OF MATERIAL

Bar.	No.	Size	Length	Shape
a(E)	8	#6	17'-8"	
a1(E)	8	#6	23'-8"	
Concrete Removal			CU YD	4.4
Concrete Superstructure			CU YD	4.8
Reinf. Bars, Epoxy Ctd.			LBS	500
Bar Splicers			EACH	8
Polymer Concrete			CU FT	8.2
Silicone Joint Sealer, 1 1/2"			FOOT	84

JOINT & DRAIN TREATMENT DETAILS

JOHNSON COUNTY
SN 044-0049 (EB)
SN 044-0050 (WB)

DESIGNED	MAS
CHECKED	MAS
DRAWN	TEB
CHECKED	MAS