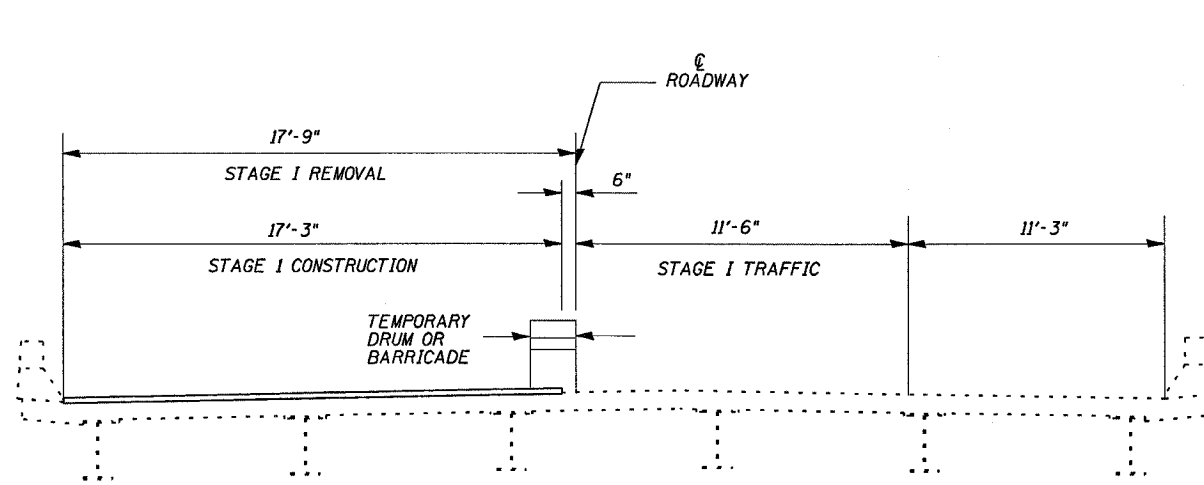
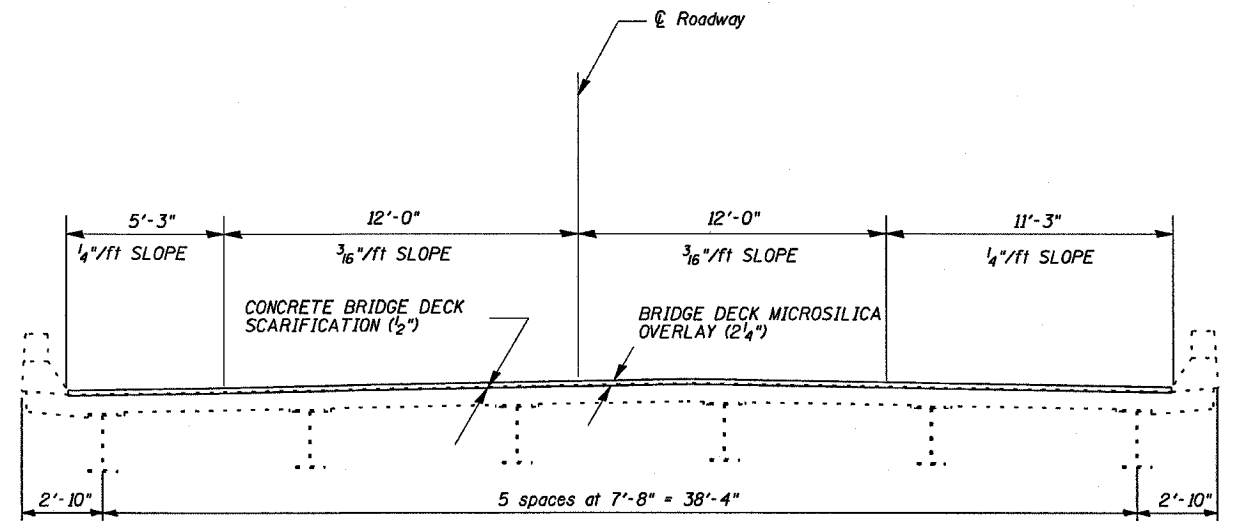


STATE OF ILLINOIS  
DEPARTMENT OF TRANSPORTATION

P.L.L. SHEET	SECTION	COUNTY	TOTAL SHEETS	SHEET NO.
24		JOHNSON	150	145
STA.		TO STA.		
FED. ROAD DIST. NO.		ILLINOIS	FED. AID PROJECT	
• BSMART FY04-3 98836				

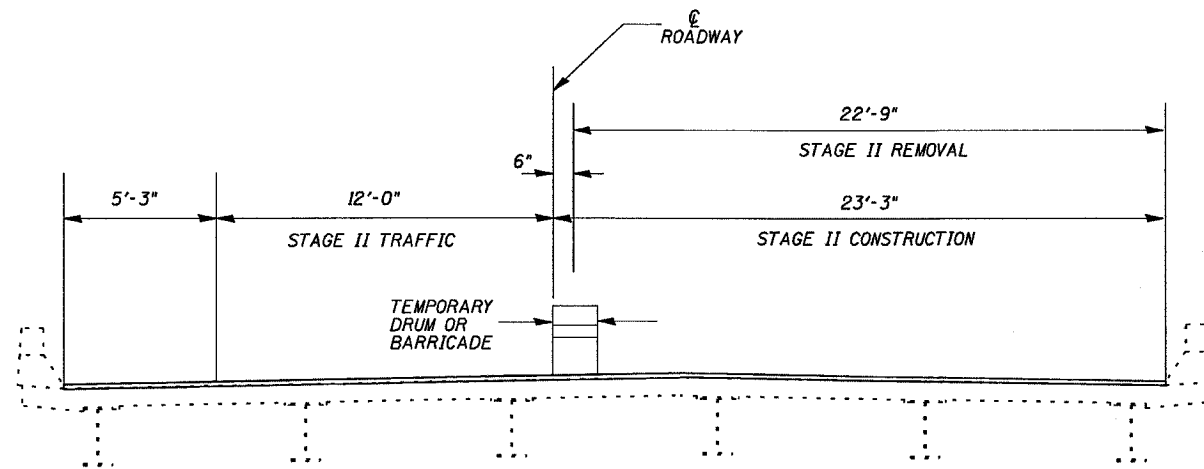


**STAGE I**



**TYPICAL CROSS SECTION**

(Proposed cross slope matches the existing normal crown)



**STAGE II**

Notes: Cross sections are looking in direction of traffic

The temporary drums or barricades shall be located as shown on this sheet except when workers are present, when they may be temporarily moved over 2'-0" shifting traffic onto the existing bituminous shoulders.

DESIGNED	TWH MAS
CHECKED	MAS
DRAWN	Kraatz/ Dickerson
CHECKED	TWH MAS

**STAGE CONSTRUCTION DETAILS**  
**JOHNSON COUNTY**  
**SN 044-0049 (EB)**  
**SN 044-0050 (WB)**