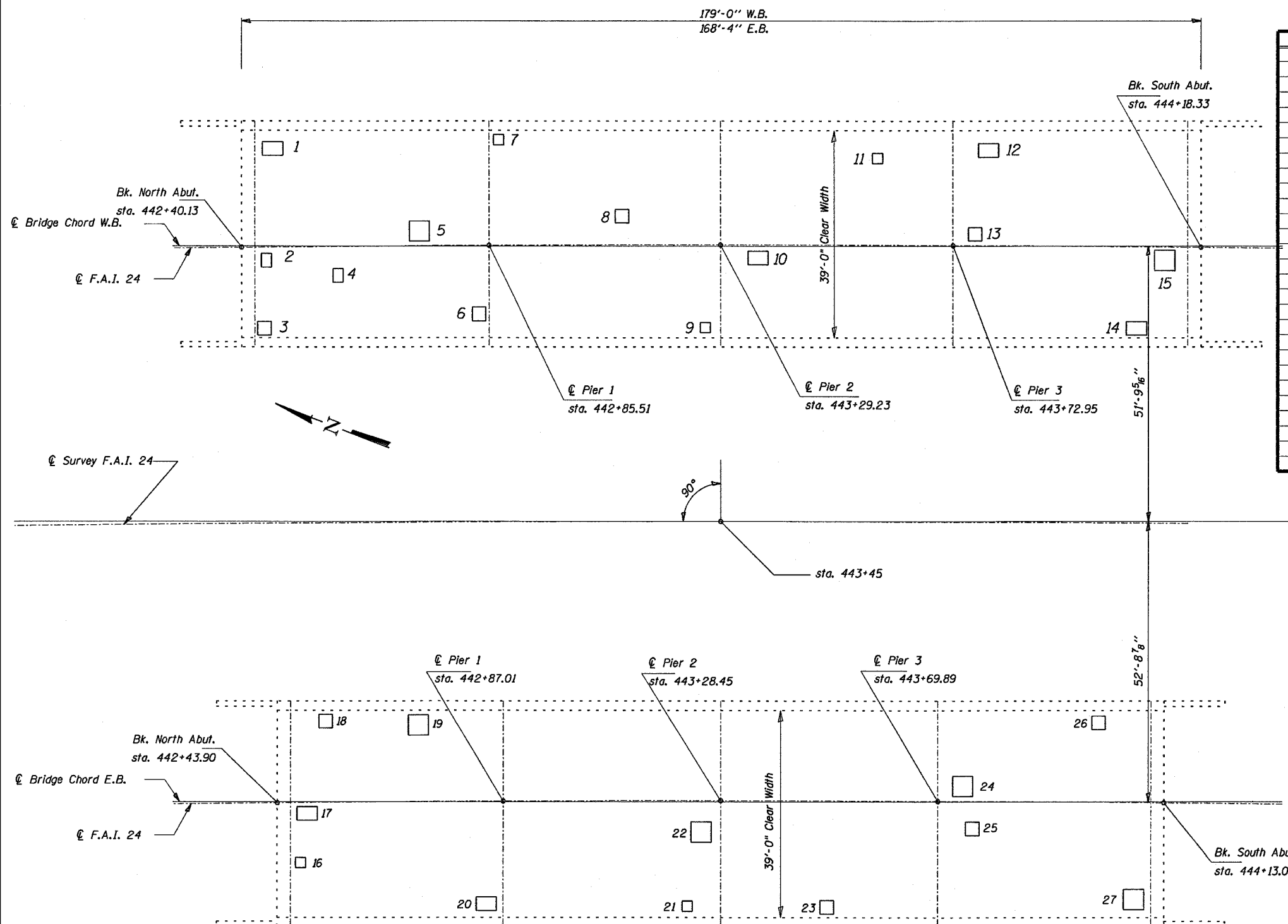


STATE OF ILLINOIS
DEPARTMENT OF TRANSPORTATION

F.A.I. #	SECTION	COUNTY	TOTAL SHEETS	SHEET NO.
24	#	JOHNSON	150	139
STA.	TO STA.			
FED. ROAD DIST. NO.	ILLINOIS	FED. AID PROJECT		

BSMART FY04-3
98836



NUMBER	LENGTH (FT)	WIDTH (FT)	AREA (SQ YD)
1	3	4	1.3
2	2	3	0.7
3	3	3	1.0
4	2	3	0.7
5	4	4	1.8
6	3	3	1.0
7	2	2	0.4
8	3	3	1.0
9	2	2	0.4
10	4	3	1.3
11	2	2	0.4
12	3	3	1.0
13	4	3	1.3
14	4	3	1.3
15	4	4	1.8
16	3	3	1.0
17	4	3	1.3
18	2	2	0.4
19	4	4	1.8
20	4	3	1.3
21	2	2	0.4
22	4	4	1.8
23	3	3	1.0
24	4	4	1.8
25	3	3	1.0
26	3	3	1.0
27	4	4	1.8

Tangent to F.A.I. 24
sta. 443+45

BILL OF MATERIAL

Item	Unit	Total	0045	0046
Deck Slab Repair (Partial Depth)	Sq. Yd.	30	15.4	14.6

Notes: Deck sounding was performed in July 2003.

Quantities shown in the plans for patching are estimates. The Resident Engineer will determine final patch locations and quantities in the field before bridge deck patching operations begin.

The Resident Engineer will mark the plan view for the deck repairs to be incorporated in the as built plans.

DESIGNED	TWH MAS
CHECKED	MAS
DRAWN	TWH JB
CHECKED	TWH MAS

DECK PATCHING DETAILS
JOHNSON COUNTY
SN 044-0045 (W.B.)
SN 044-0046 (E.B.)