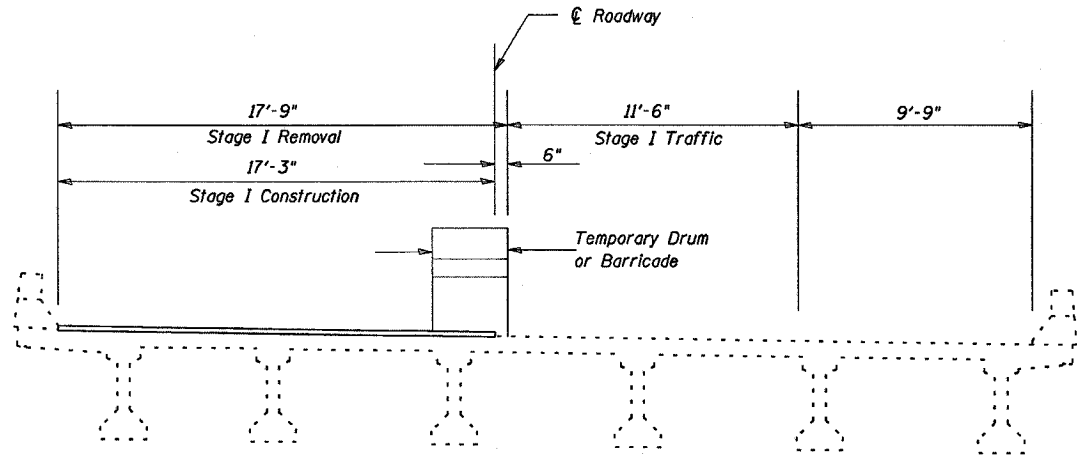
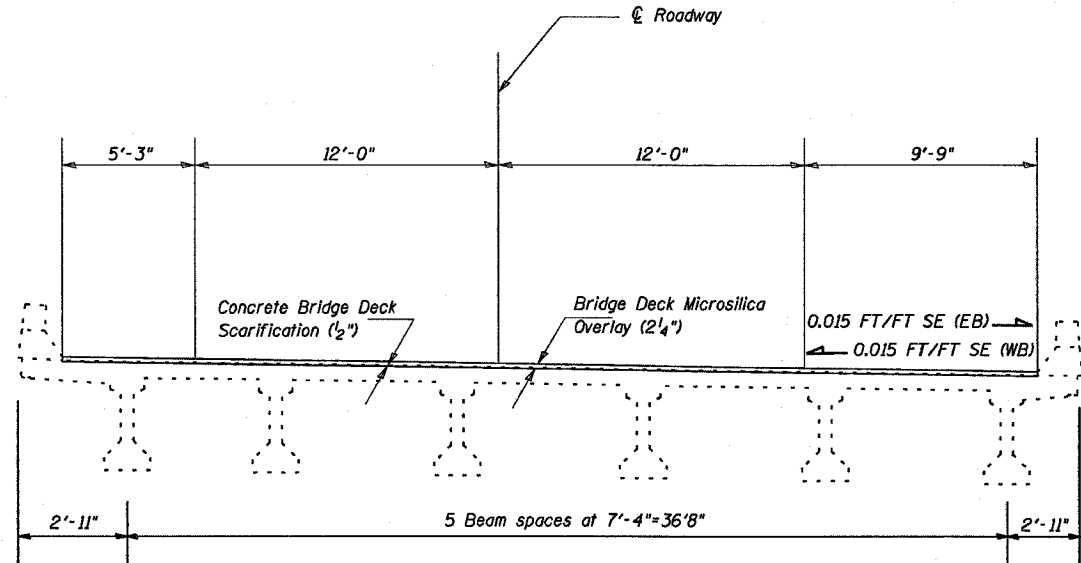


STATE OF ILLINOIS  
DEPARTMENT OF TRANSPORTATION

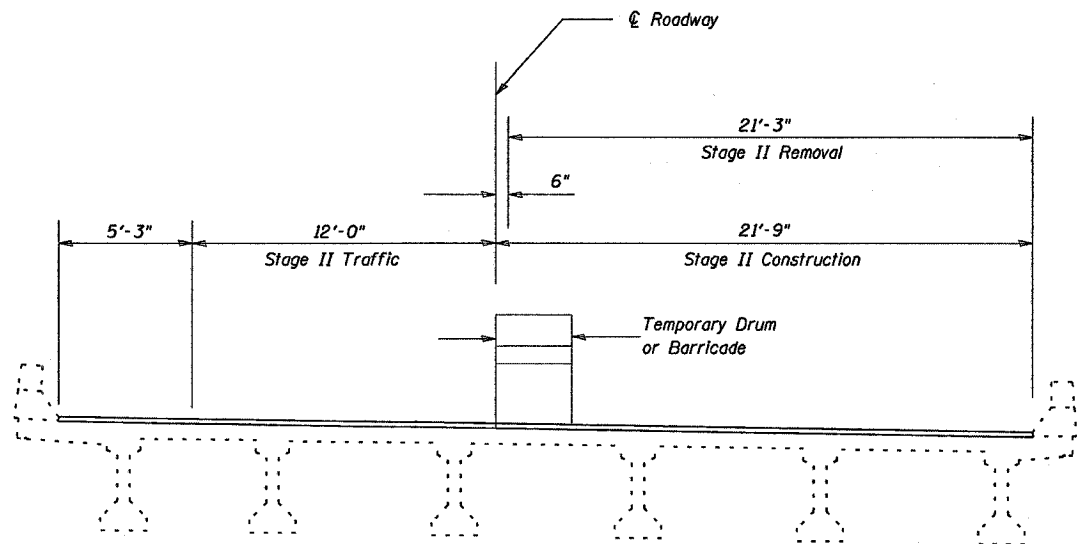
P.A. & REL.	SECTION	COUNTY	TOTAL SHEETS	SHEET NO.
24	#	JOHNSON	150	138
STA.	TO STA.			
FED. ROAD DIST. NO.	ILLINOIS	FED. AID PROJECT		
* BSMART FY04-3 98836				



**STAGE I**



**TYPICAL CROSS SECTION**  
(Proposed cross slope matches the existing 0.015 Ft/Ft SE)



**STAGE II**

Notes: Cross sections are looking in direction of traffic  
The temporary drums or barricades shall be located as shown on this sheet except when workers are present, when they may be temporarily moved over 2'-0" shifting traffic onto the existing bituminous shoulders.

DESIGNED	TWH MAS
CHECKED	MAS
DRAWN	TWH JB
CHECKED	TWH MAS

**STAGE CONSTRUCTION DETAILS**  
**JOHNSON COUNTY**  
**SN 044-0045 (W.B.)**  
**SN 044-0046 (E.B.)**