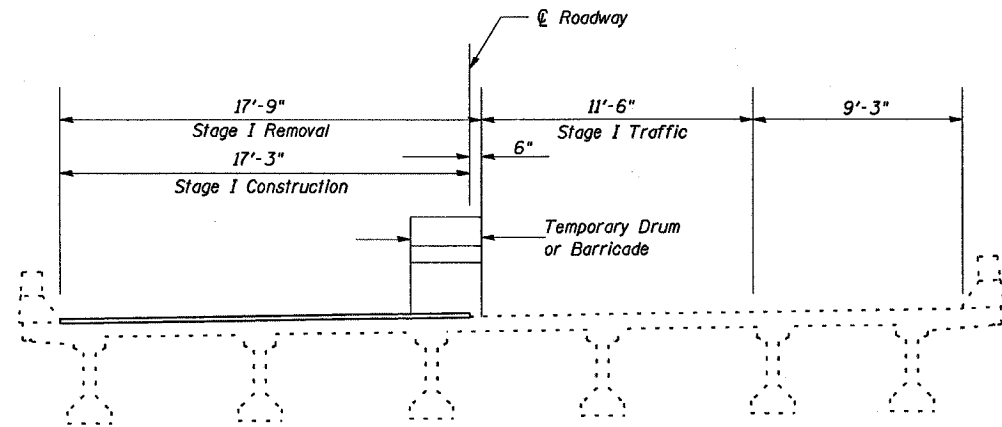
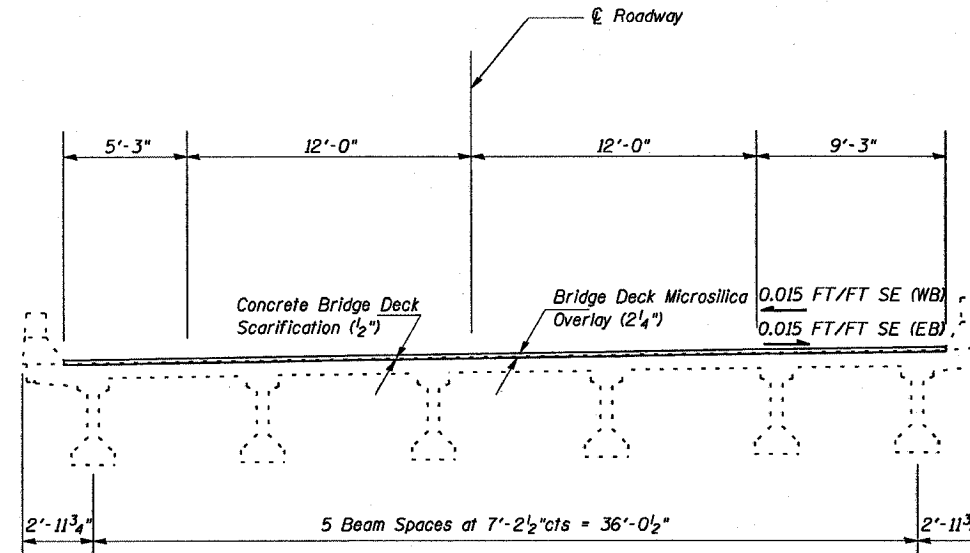


STATE OF ILLINOIS
DEPARTMENT OF TRANSPORTATION

P.L.L. SEC.	SECTION	COUNTY	TOTAL SHEETS	SHEET NO.
24	*	JOHNSON	150	134
STA.	TO STA.			
FED. ROAD DIST. NO.	BLK/SPR	FED. AID PROJECT		
* BSMART FY04-3 98836				

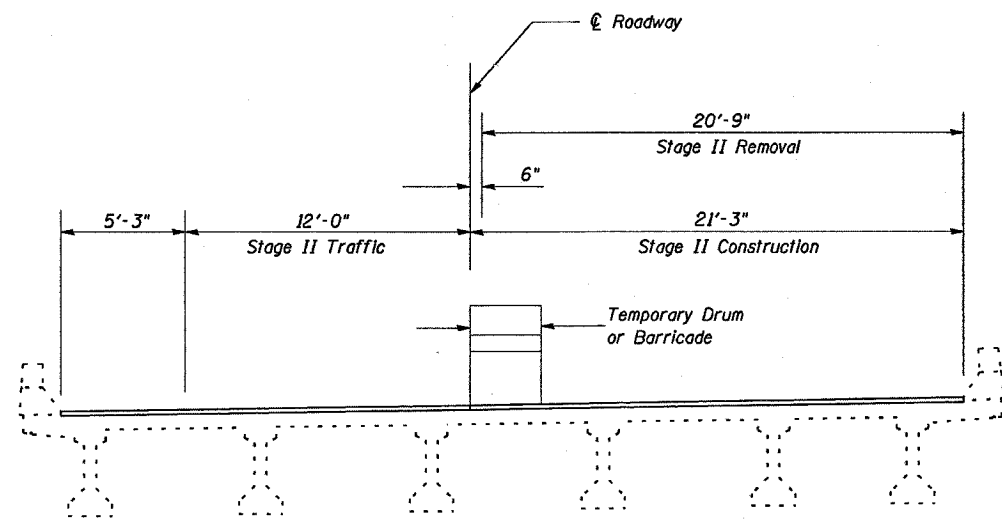


STAGE I



TYPICAL CROSS SECTION

(PROPOSED CROSS SLOPE MATCHES THE EXISTING 0.015 F1/F1 SE)



STAGE II

Notes: Cross sections are looking in direction of traffic.

The temporary drums or barricades shall be located as shown on this sheet except when workers are present, when they may be temporarily moved over 2'-0" shifting traffic onto the existing bituminous shoulders.

STAGE CONSTRUCTION DETAILS

JOHNSON COUNTY
SN 044-0043 (WB)
SN 044-0044 (EB)

DESIGNED	TWH MAS
CHECKED	MAS
DRAWN	LD TEB
CHECKED	TWH MAS