

STATE OF ILLINOIS  
DEPARTMENT OF TRANSPORTATION

P.A.A. NO.	SECTION #	COUNTY	TOTAL SHEETS	SHEET #
24		JOHNSON	150	125
STA.	TO STA.			
FED. ROAD DIST. NO.	ALIAS	FED. AID PROJECT		

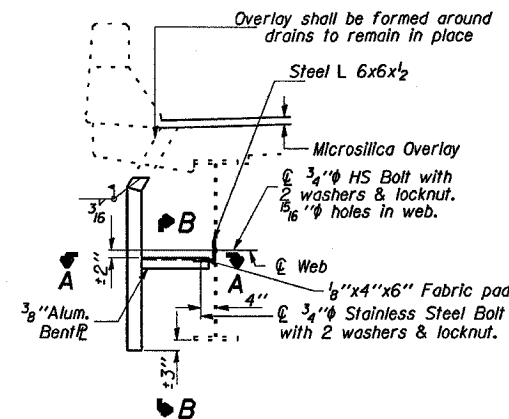
\* BSMART FY04-3  
98836

Plug drain with concrete.  
Microsilica Overlay

Field drill  $\frac{3}{8}$ " hole for  $\frac{1}{4}$ " threaded rod 13" long with nuts & washers.

**SECTION AT DRAIN  
DRAIN ELIMINATION DETAIL**  
(24 Locations)

$\frac{3}{16}$ " Aluminum sheets welded  
ASTM: B209 alloy 6061-T6  
or Aluminum Extrusions  
ASTM: B221 alloy 6061-T6.



**SECTION AT DRAIN**

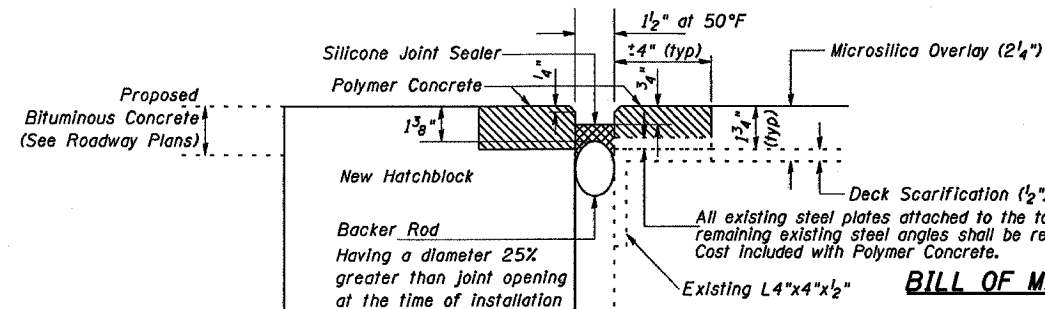
$\frac{1}{8}$ " Fabric Pad  
 $\frac{1}{16}$ " x  $3\frac{1}{2}$ " Slot Hole

**SECTION B-B**

**DRAIN EXTENSION DETAIL**  
(16 Locations)

$\frac{1}{16}$ " x 2" Slot Hole in Aluminum Plate  
 $\frac{1}{16}$ " x  $3\frac{1}{2}$ " Slot Hole in Angle

**SECTION A-A**



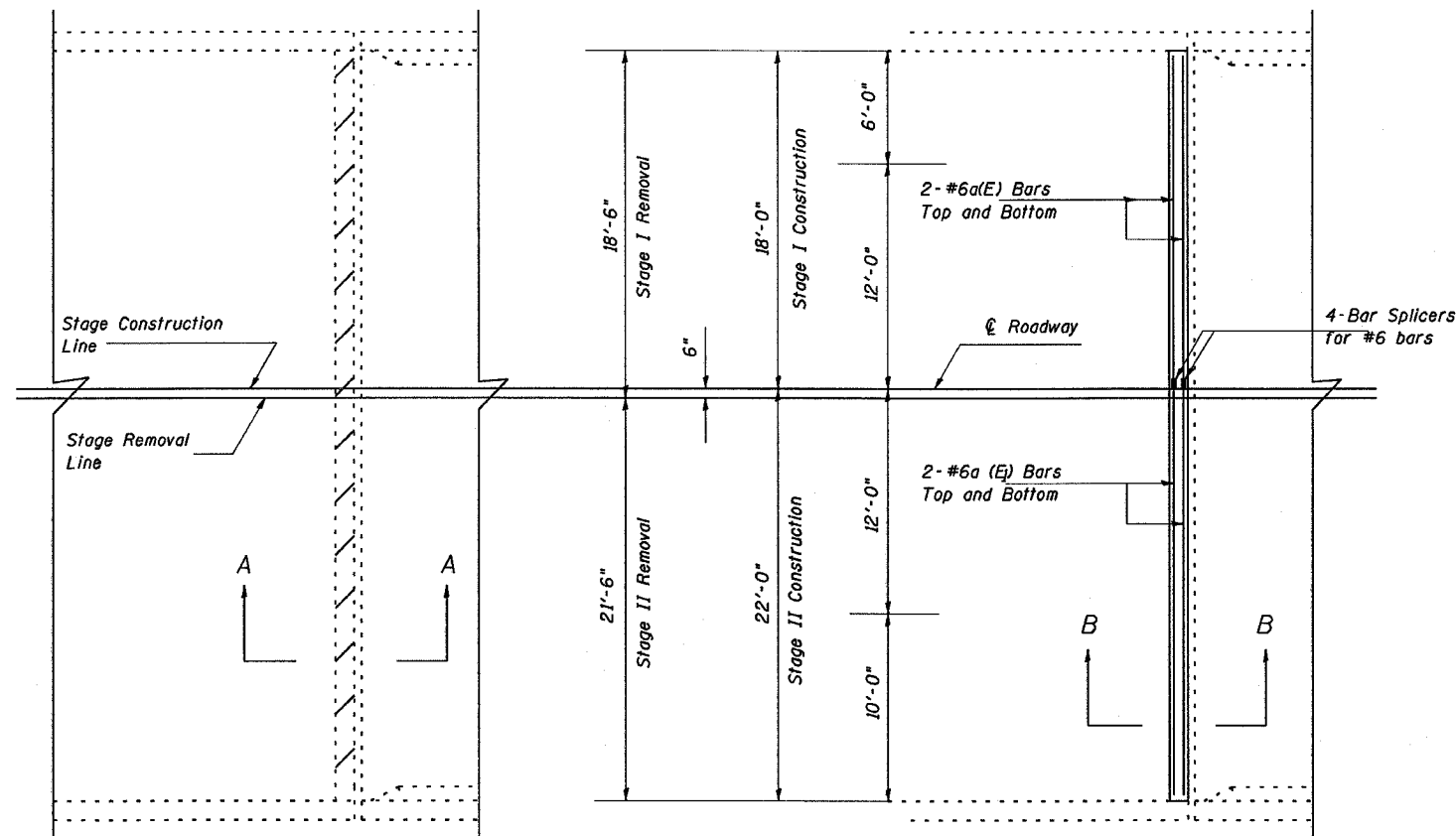
**JOINT TREATMENT**

**BILL OF MATERIAL**

Bar	No.	Size	Length	Shape
a(E)	16	#6	17'-8"	---
a <sub>1</sub> (E)	16	#6	21'-8"	---
Concrete Removal		CU YD	8.3	
Concrete Superstructure		CU YD	9.2	
Reinf Bars, Epoxy Ctd.		LBS	950	
Bar Splicers		EACH	16	
Polymer Concrete		CU FT	15.5	
Silicone Joint Sealer, 1/2"		FOOT	160	

**JOINT & DRAIN TREATMENT DETAILS  
JOHNSON COUNTY  
SN 044-0041 (EB)  
SN 044-0042 (WB)**

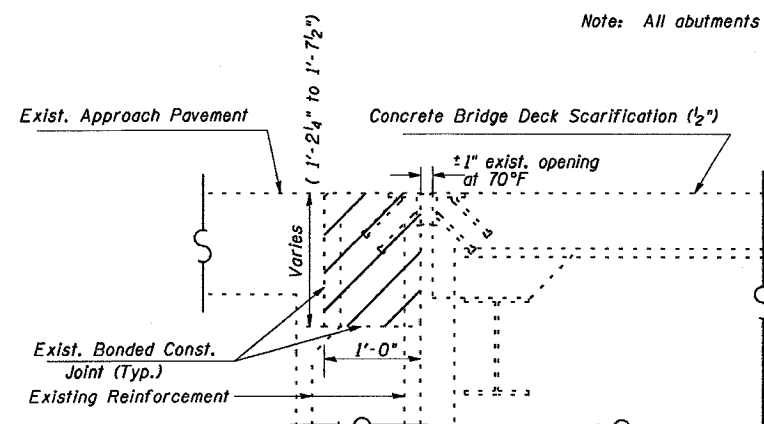
Concrete Removal



**NORTH ABUTMENT PLAN - EB**  
SHOWING CONCRETE REMOVAL

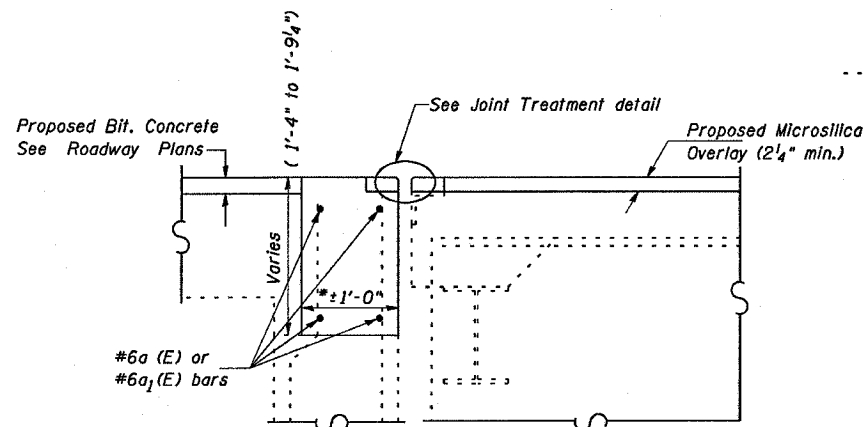
**NORTH ABUTMENT PLAN - EB**  
SHOWING CONCRETE SUPERSTRUCTURE

Note: All abutments typical



**SECTION A-A**

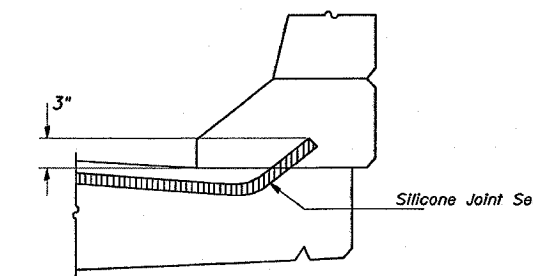
Dimensions are at right angles.



**SECTION B-B**

Dimensions are at right angles.

\* Adjust width in field to provide the specified joint opening



**TYPICAL END OF SEAL TREATMENT  
AT EXPANSION JOINT**

DESIGNED	MAS
CHECKED	MAS
DRAWN	TEB
CHECKED	MAS