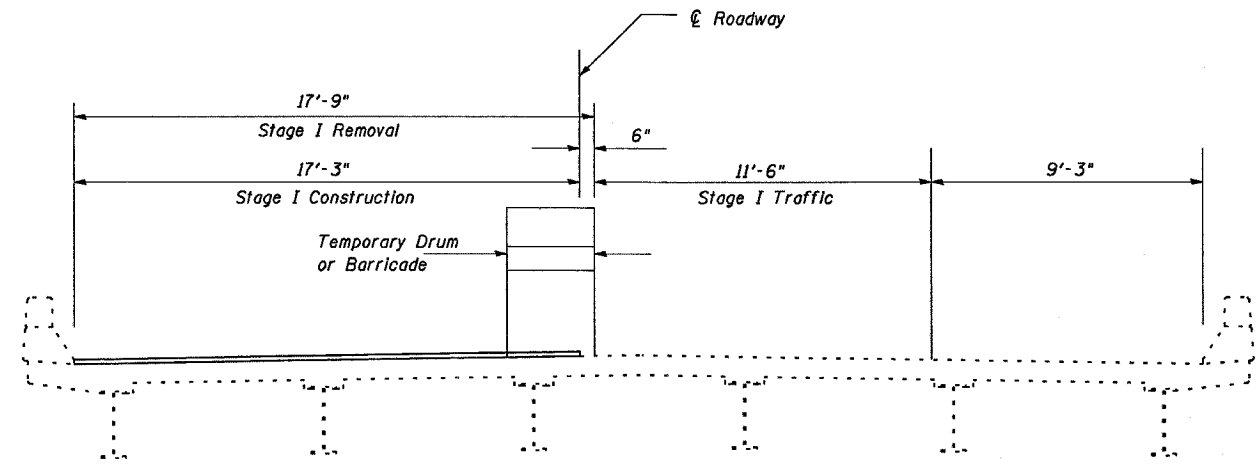


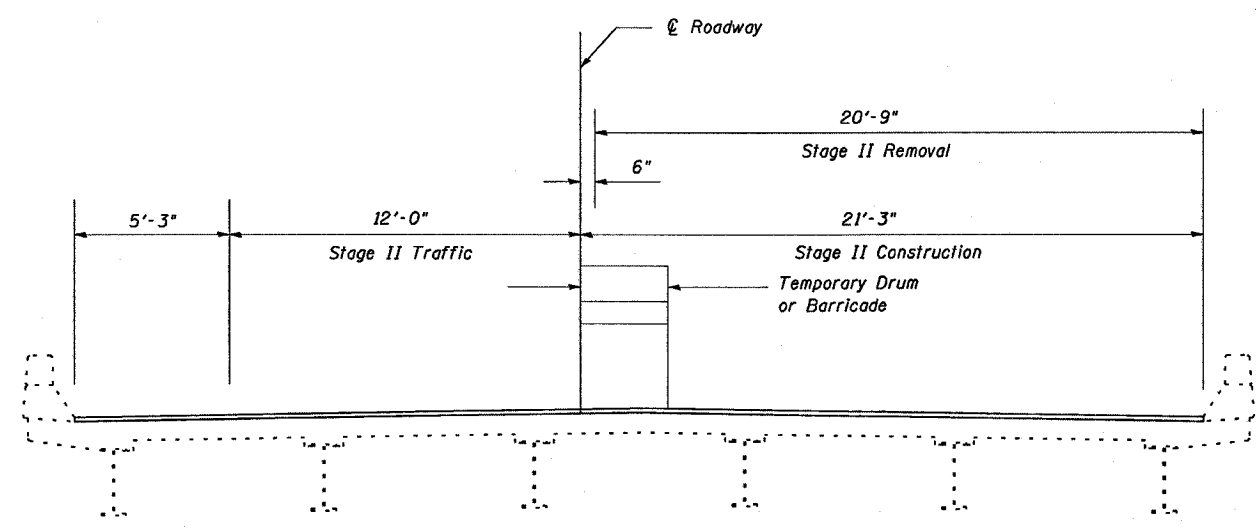
STATE OF ILLINOIS
DEPARTMENT OF TRANSPORTATION

F.A. #	SECTION	COUNTY	TOTAL SHEETS	SHEET NO.
24	#	JOHNSON	150	123
STA.	TO STA.			
FED. ROAD DIST. NO.	ILLINOIS	FED. AID PROJECT		

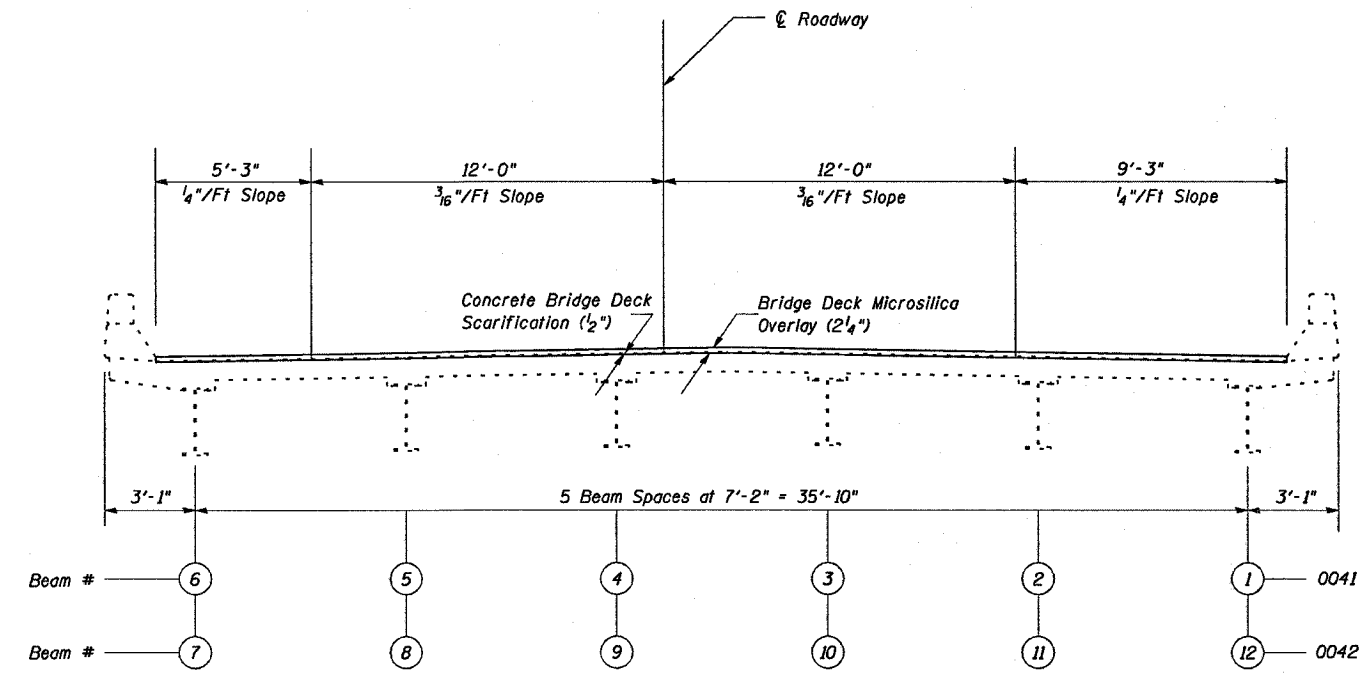
* BSMART FY04-3
98836



STAGE I



STAGE II



TYPICAL CROSS SECTION
(PROPOSED CROSS SLOPE MATCHES THE EXISTING NORMAL CROWN)

Notes: Cross sections are looking in direction of traffic

The temporary drums or barricades shall be located as shown on this sheet except when workers are present, when they may be temporarily moved over 2'-0" shifting traffic onto the existing bituminous shoulders.

DESIGNED	TWH MAS
CHECKED	MAS
DRAWN	JH TEB
CHECKED	TWH MAS

STAGE CONSTRUCTION DETAILS
JOHNSON COUNTY
SN 044-0041 (EB)
SN 044-0042 (WB)