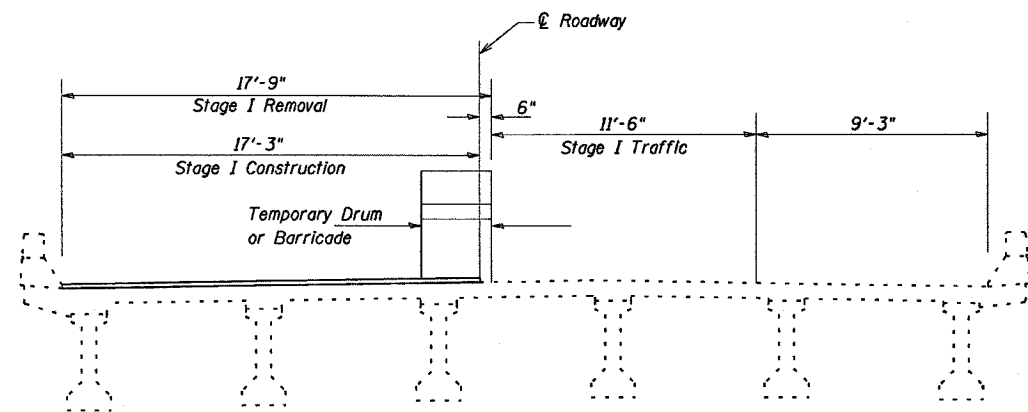


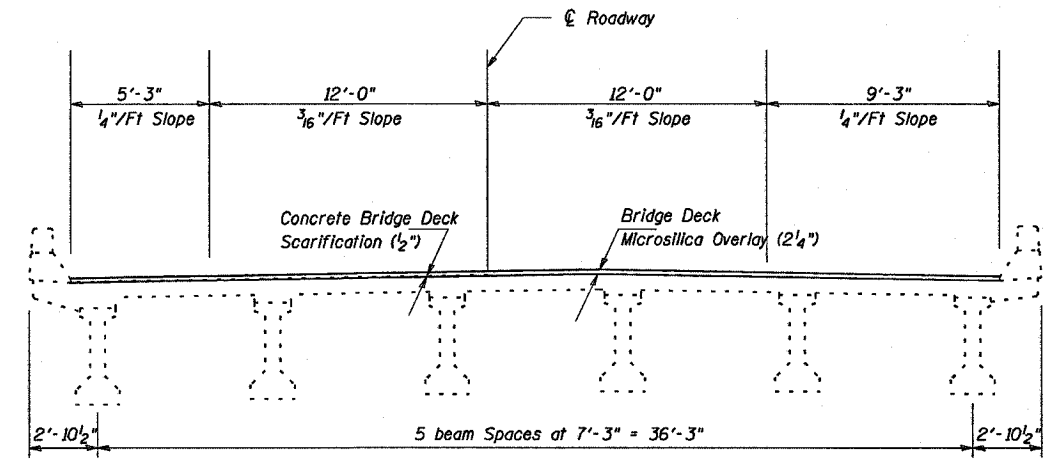
STATE OF ILLINOIS
DEPARTMENT OF TRANSPORTATION

SECTION #	COUNTY	TOTAL SHEETS	SHEET #
24	JOHNSON	150	120
STA. TO STA.		FED. ROAD DIST. NO.	
		ILLINOIS	

* BSMART FY04-3
98836



STAGE I



TYPICAL CROSS SECTION

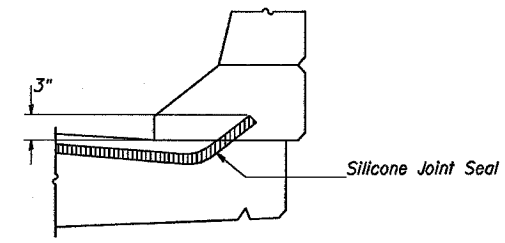
(Proposed cross slope matches the existing normal crown)

Notes: Cross sections are looking in direction of traffic

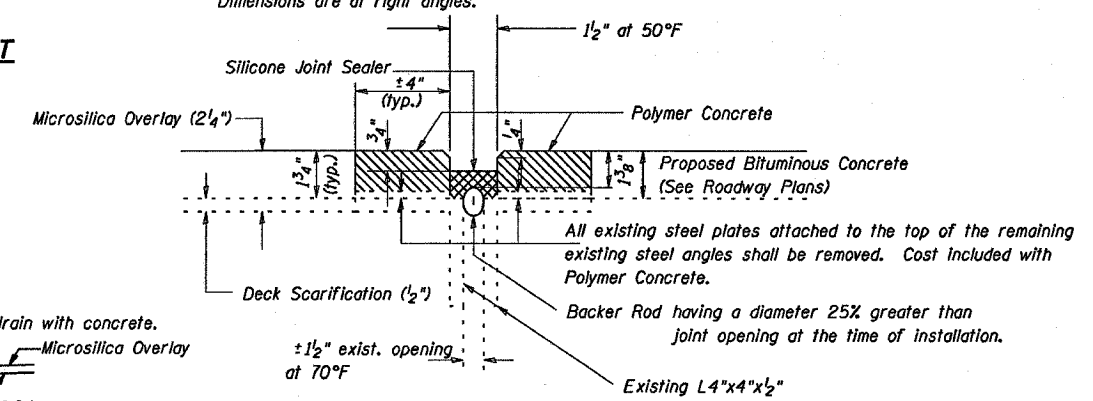
The temporary drums or barricades shall be located as shown on this sheet except when workers are present, when they may be temporarily moved over 2'-0" shifting traffic onto the existing bituminous shoulders.

All abutments typical

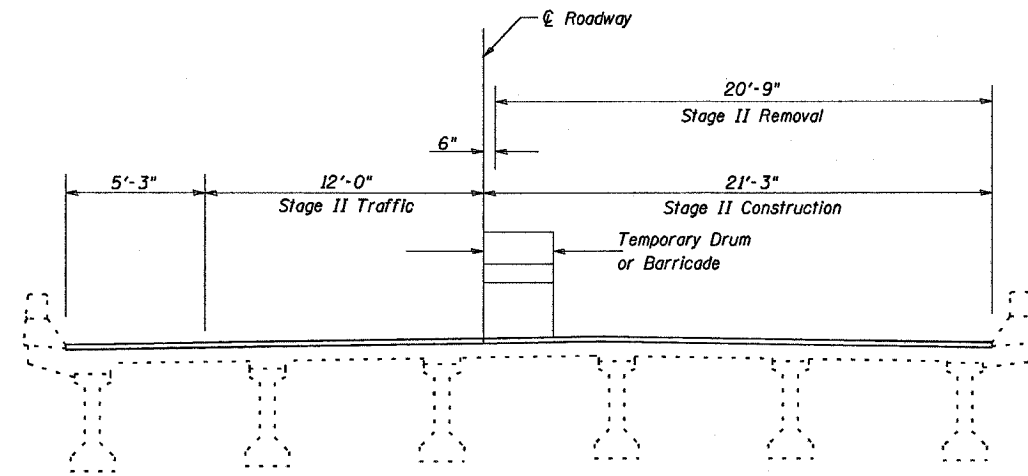
Dimensions are at right angles.



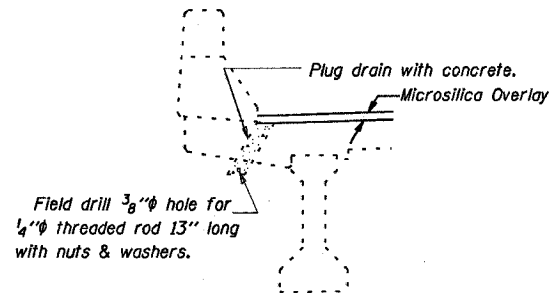
TYPICAL END OF SEAL TREATMENT AT EXPANSION JOINT



JOINT TREATMENT AT ABUTMENTS



STAGE II



**SECTION AT DRAIN
DRAIN ELIMINATION DETAIL**
(8 Locations)

STAGE CONSTRUCTION, JOINT TREATMENT & DRAIN ELIMINATION DETAILS
JOHNSON COUNTY
SN 044-0039 (W.B.)
SN 044-0040 (E.B.)

DESIGNED	TWH MAS
CHECKED	MAS
DRAWN	TWH TEB
CHECKED	MAS