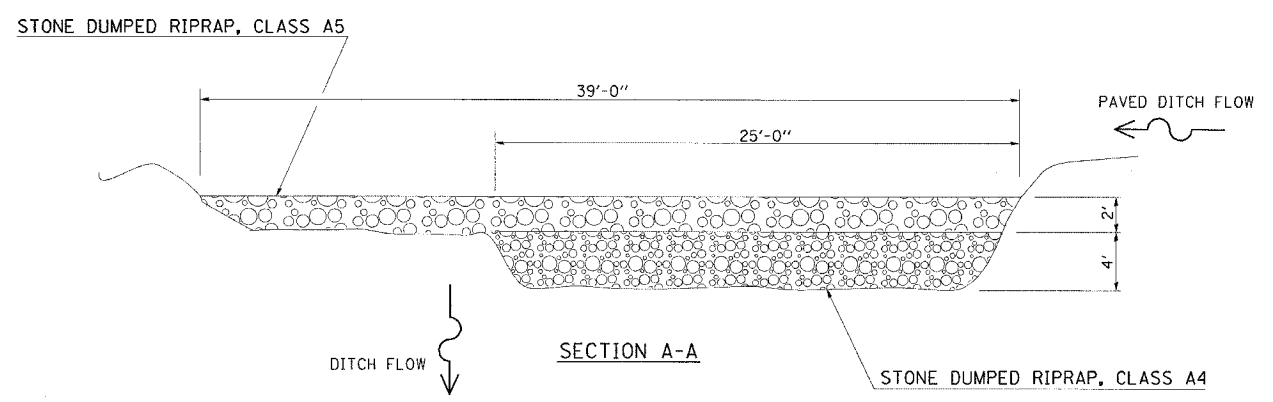
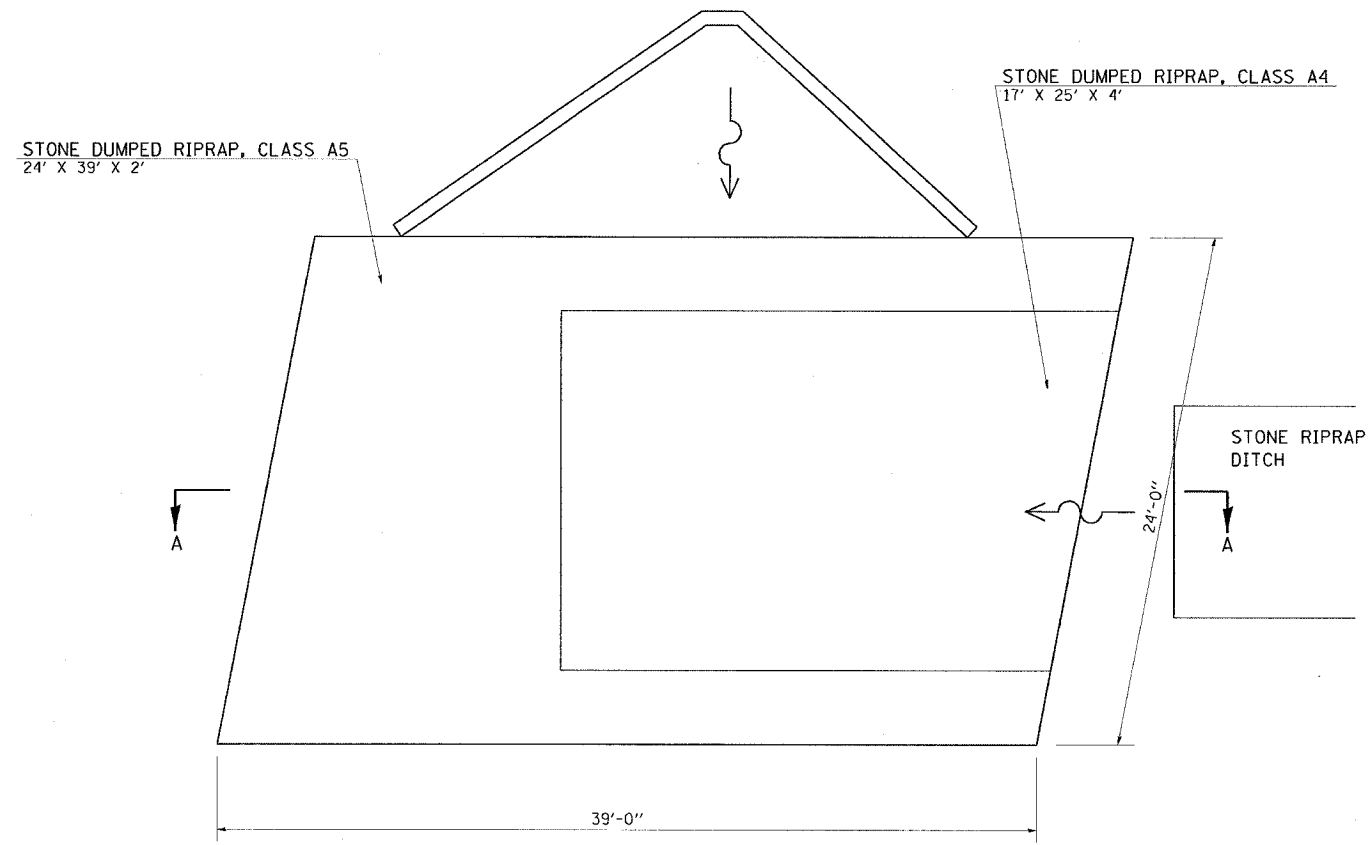
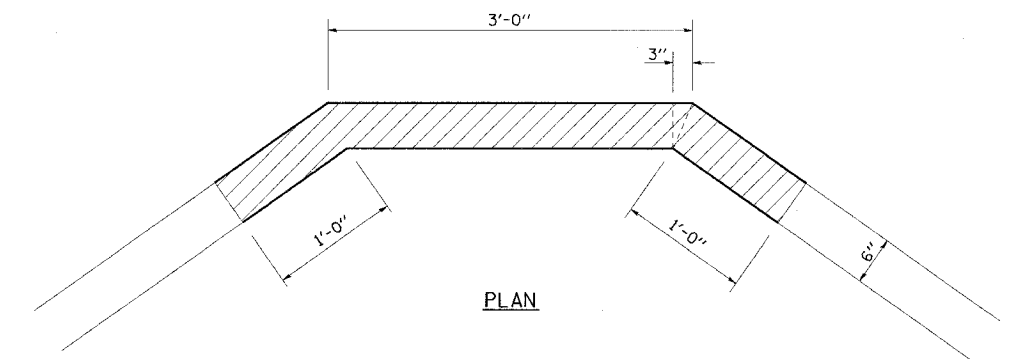
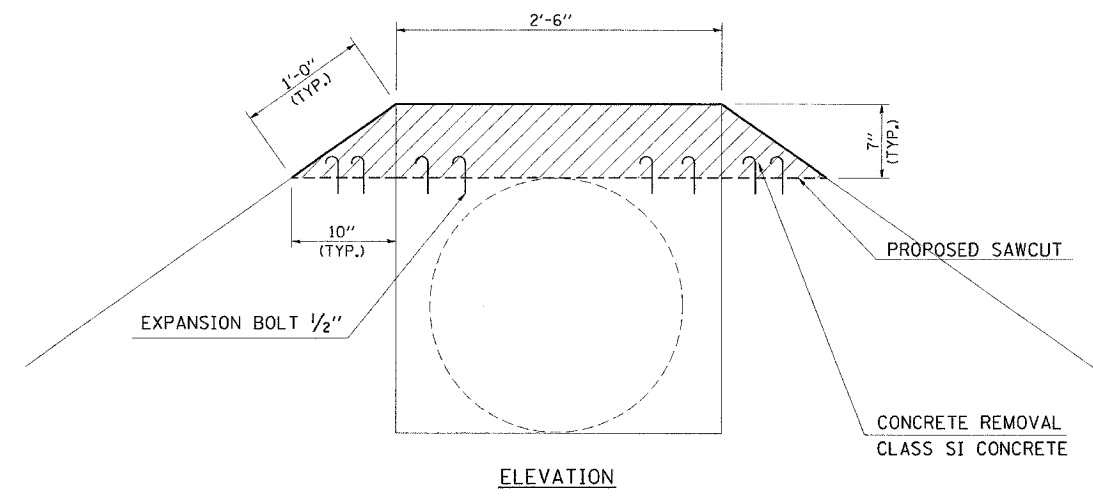


F. A. I. DIST.	SECTION	COUNTY	TOTAL SHEETS	SHEET NO.
24	*	JOHNSON	150	107
STA.		TO STA.		
FED. ROAD DIST. NO.		BLDG. NO.	FED. AID PROJECT	
* (44-5,6)RS, BSMART FY04-3				
98836				

STONE RIPRAP OUTLET
RT. STA. 107+70 (E BL) MP 17.3



CONCRETE HEADWALL REPAIR
LT. STA. 120+00 (WBL) MP 17.5



NOTES:

- THIS WORK CONSIST OF THE REPAIR OF DAMAGED REINFORCED CONCRETE.
- DAMAGED REINFORCED CONCRETE SHALL BE REMOVED DOWN TO SOUND CONCRETE IN ACCORDANCE WITH ARTICLE 501.03 OF THE STANDARD SPECIFICATIONS FOR ROAD AND BRIDGE CONSTRUCTION.
- ALL REMOVED CONCRETE SHALL BE DISPOSED OF IN ACCORDANCE WITH ARTICLE 202.03 OF THE STANDARD SPECIFICATIONS.
- THE CONTRACTOR SHALL PLACE EXPANSION BOLTS 1/2" IN DIAMETER AT 7" CENTERS AND EPOXY GROUTED AS PER SECTION 584 OF THE STANDARD SPECIFICATIONS.
- THE CONTRACTOR SHALL PLACE ANY EXPANSION BOLTS AND CONCRETE TO THE DIMENSION SHOWN IN THIS DETAIL.
- CONCRETE PLACEMENT SHALL BE IN ACCORDANCE WITH THE APPLICABLE PORTIONS OF SECTION 503 OF THE STANDARD SPECIFICATIONS.
- CLASS SI CONCRETE SHALL BE USED THROUGHOUT.
- EXPOSED EDGES SHALL BE BEVELED 3/4".
- SEE THE CULVERT REPAIR SCHEDULE SHEET 14 FOR THE INFORMATIONAL QUANTITIES OF CONCRETE REMOVAL, SAW CUTS, EXPANSION BOLTS 1/2" AND CLASS SI CONCRETE ITEMS.
- THIS WORK SHALL BE PAID FOR AS EACH FOR CONCRETE HEADWALL REPAIR WHICH PRICE SHALL INCLUDE ALL LABOR AND MATERIALS REQUIRED TO REPAIR THE EXISTING HEADWALL.

**DETAILS: STONE RIPRAP OUTLET RT. STA. 107+70 (EBL) MP 17.3;
HEADWALL REPAIR LT. STA. 120+00 (WBL) MP 17.5**

Set Jan 17 10:42 AM 2004
C:\p\projects\190200\98836\124-2.dgn LVH:62