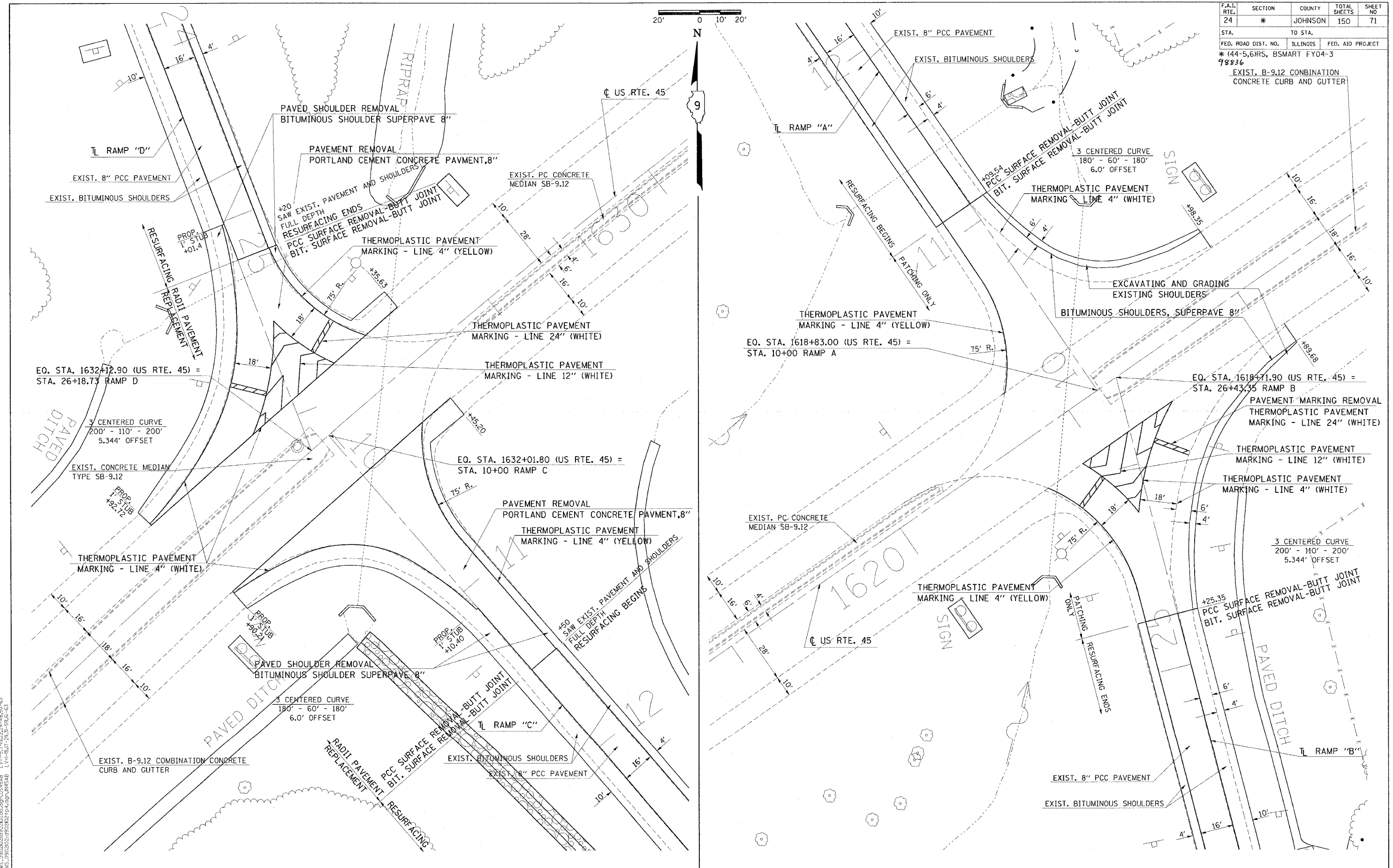


F.A.I. RTE.	SECTION	COUNTY	TOTAL SHEETS	SHEET NO
24	*	JOHNSON	150	71
STA. TO STA.				
FED. ROAD DIST. NO. ILLINOIS FED. AID PROJECT				
* (44-5,6)RS, BSMART FY04-3				
98836				
EXIST. B-9.12 COMBINATION CONCRETE CURB AND GUTTER				



Web: Feb 4 16:00:06 2004
 c:\prow\lms\092022\0225.dgn LV:2-20:22:63
 DMS:092022\092022\0225.dgn US:45:CD LV:5-19:22:24-48:50-63
 DMS:092022\092022\0225.dgn US:45:AB LV:5-19:22:24-48:50-63
 DMS:092022\092022\0225.dgn US:45:AB LV:5-19:22:24-48:50-63
 DMS:092022\092022\0225.dgn US:45:AB LV:5-19:22:24-48:50-63

US RTE. 45 INTERCHANGE (RAMPS A, B, C, D)