

PROP. CURVE 7
 PI STA. = 429+96.60
 $\Delta = 20^\circ 00' 49"$ (RT)
 $D = 0^\circ 30' 08"$
 $R = 11,408.69'$
 $T = 2,013.05'$
 $L = 3,985.08'$
 $E = 176.24'$
 S.E. REMOVE CROWN
 P.C. STA. = 409+83.55
 P.T. STA. = 449+68.63

BM 1201 CHISELED "C" IN NW HANDRAIL
 SN 044-0045, STA. 442+38
STONE RIPRAP DITCH
 SEE DETAIL SHEET 109
 LT. STA. 434+12 TO STA. 436+11.5 (C WBL)

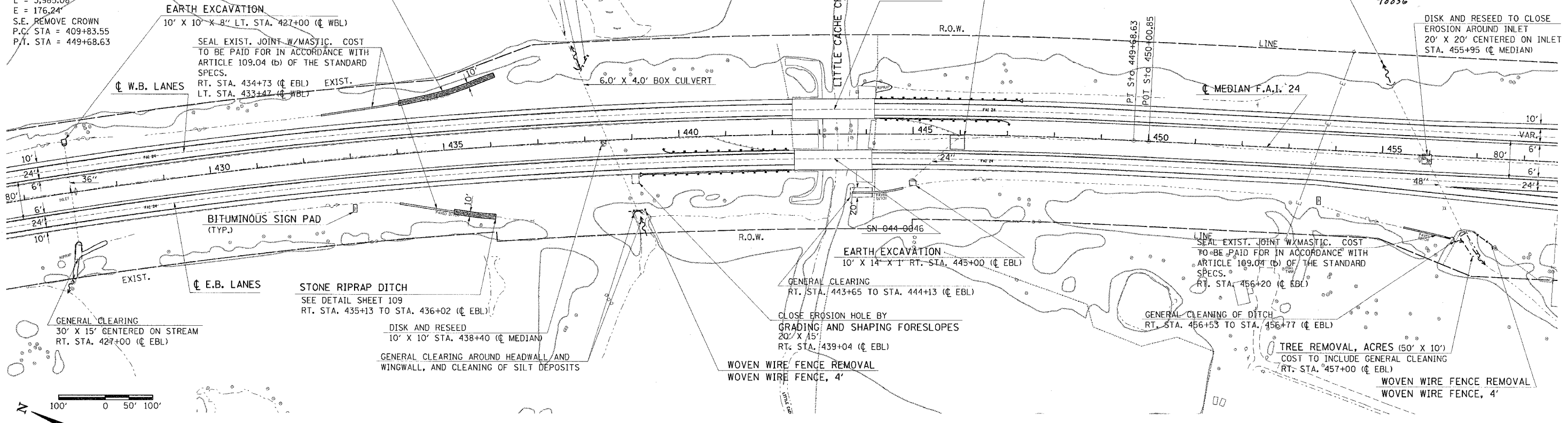
GENERAL CLEARING AROUND HEADWALL AND
 WINGWALL, AND THE STREAM FROM BOX TO R.O.W.
 TO IMPROVE FLOW
WOVEN WIRE FENCE REMOVAL
 WOVEN WIRE FENCE, 4'

EXCAVATION TO REPAIR CULVERT
 GRADING AND SHAPING FORESLOPES
 30' X 30' CENTERED ON INLET
 RT. STA. 445+95 (C MEDIAN)

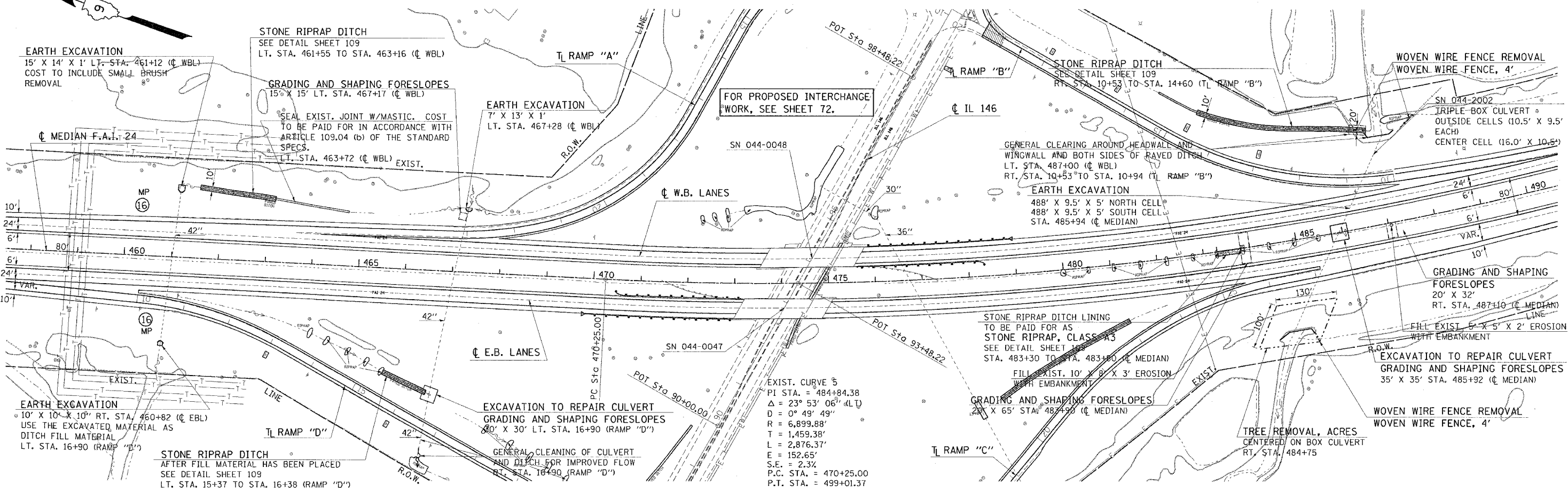
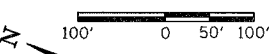
GENERAL CLEARING AROUND HEADWALL,
 WINGWALLS AND GENERAL CLEANING OF
 DITCH FOR IMPROVED FLOW
 LT. STA. 455+10 (C EBL)

F.A. DIST.	SECTION	COUNTY	TOTAL SHEETS	SHEET NO.
24	*	JOHNSON	150	61
TO STA.				
FED. ROAD DIST. NO.				
ALTIMETER				
FED. AID PROJECT				
* (44-5,6)RS, BSMART FY04-3				
98836				

DISK AND RESEED TO CLOSE
 EROSION AROUND INLET
 20' X 20' CENTERED ON INLET
 STA. 455+95 (C MEDIAN)



Tue Jun 20 09:50:42 2004
 c:\p\projects\090202\d90202p3.dgn LV=24-202224-46-49-63
 DMS:090202.dgn D:\p\0202.dgn LV=2-9-22-25-35-37-48-50-62
 DMS:090202.dgn D:\p\0202.dgn LV=2-9-22-25-35-37-48-50-62



Tue Jun 20 09:50:42 2004
 c:\p\projects\090202\d90202p3.dgn LV=24-202224-46-49-63
 DMS:090202.dgn D:\p\0202.dgn LV=2-9-22-25-35-37-48-50-62
 DMS:090202.dgn D:\p\0202.dgn LV=2-9-22-25-35-37-48-50-62

STA. 426+00 TO STA. 490+00