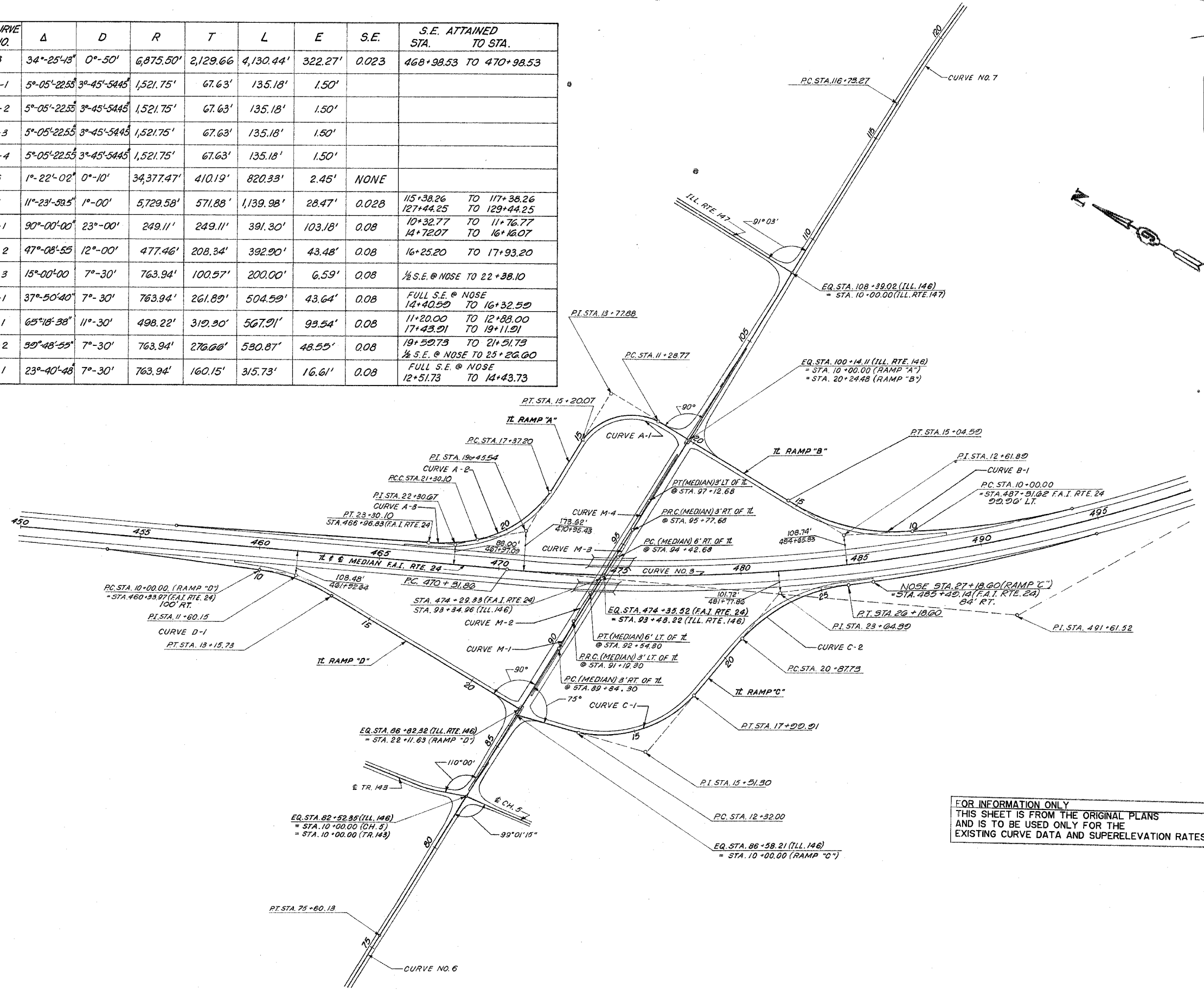


ROUTE	P.I. STA.	CURVE NO.	Δ	D	R	T	L	E	S.E.	S.E. ATTAINED STA. TO STA.
FAI -24	491+61.52	3	34°-25'-43"	0°-50'	6,875.50'	2,129.66'	4,130.44'	322.27'	0.023	468+98.53 TO 470+98.53
ILL. 146(MED)		M-1	5°-05'-22.55"	3°-45'-54.45"	1,521.75'	67.63'	135.18'	1.50'		
ILL. 146(MED)		M-2	5°-05'-22.55"	3°-45'-54.45"	1,521.75'	67.63'	135.18'	1.50'		
ILL. 146(MED)		M-3	5°-05'-22.55"	3°-45'-54.45"	1,521.75'	67.63'	135.18'	1.50'		
ILL. 146(MED)		M-4	5°-05'-22.55"	3°-45'-54.45"	1,521.75'	67.63'	135.18'	1.50'		
ILL. 146	71+50.00	6	1°-22'-02"	0°-10'	34,377.47'	410.19'	820.33'	2.45'	NONE	
ILL. 146	122+45.15	7	11°-23'-59.5"	1°-00'	5,729.58'	571.88'	1,139.98'	28.47'	0.028	115+38.26 TO 117+38.26 127+44.25 TO 129+44.25
RAMP "A"	13+77.88	A-1	90°-00'-00"	23°-00'	249.11'	249.11'	391.30'	103.18'	0.08	10+32.77 TO 11+76.77 14+72.07 TO 16+16.07
RAMP "A"	19+45.54	A-2	47°-08'-55"	12°-00'	477.46'	208.34'	392.90'	43.48'	0.08	16+25.20 TO 17+93.20
RAMP "A"	22+30.67	A-3	15°-00'-00"	7°-30'	763.94'	100.57'	200.00'	6.59'	0.08	1/2 S.E. @ NOSE TO 22+38.10
RAMP "B"	12+61.89	B-1	37°-50'-40"	7°-30'	763.94'	261.89'	504.59'	43.64'	0.08	FULL S.E. @ NOSE 14+40.99 TO 16+32.59
RAMP "C"	15+51.30	C-1	65°-18'-38"	11°-30'	498.22'	310.30'	567.91'	99.54'	0.08	11+20.00 TO 12+88.00 17+43.21 TO 19+11.21
RAMP "C"	23+64.39	C-2	39°-48'-55"	7°-30'	763.94'	276.66'	530.87'	48.55'	0.08	19+50.73 TO 21+51.73 1/2 S.E. @ NOSE TO 23+26.60
RAMP "D"	11+60.15	D-1	23°-40'-48"	7°-30'	763.94'	160.15'	315.73'	16.61'	0.08	FULL S.E. @ NOSE 12+51.73 TO 14+43.73



FOR INFORMATION ONLY  
THIS SHEET IS FROM THE ORIGINAL PLANS  
AND IS TO BE USED ONLY FOR THE  
EXISTING CURVE DATA AND SUPERELEVATION RATES