

04-22-2016 LETTING ITEM 128

STATE OF ILLINOIS  
DEPARTMENT OF TRANSPORTATION  
DIVISION OF HIGHWAYS

**PLANS FOR PROPOSED  
FEDERAL AID HIGHWAY**

FAU 2625 MILL ROAD (I-290 TO IRVING PARK ROAD),  
MARY JANE LANE (MILL ROAD TO PROSPECT AVENUE),  
VICTORIA LANE (MILL ROAD TO PROSPECT AVENUE)

SECTION: 14-00051-00-RS

PROJECT: M-4003(303)

JOB: C-91-260-14

**RESURFACING AND WATERMAIN IMPROVEMENTS**  
**CITY OF WOOD DALE**  
**DUPAGE COUNTY**

LOCATION MAP

F.A.U. RTE.	SECTION	COUNTY	TOTAL SHEETS	SHEET NO.
2625	14-00051-00-RS	DUPAGE	31	1
M-4003(303)		ILLINOIS	CONTRACT NO. 61C61	

FOR INDEX OF SHEETS, SEE SHEET NO. 2

FOR INDEX OF HIGHWAY STANDARDS, SEE SHEET NO. 2

TRAFFIC DATA

MILL ROAD (MAJOR COLLECTOR)  
2012 ADT = 3,500  
POSTED SPEED LIMIT: 30 MPH  
DESIGN SPEED LIMIT: 30 MPH

MARY JANE LANE (LOCAL)  
ADT = 300  
POSTED SPEED LIMIT: 20 MPH  
DESIGN SPEED LIMIT: 20 MPH

VICTORIA LANE (LOCAL)  
ADT = 300  
POSTED SPEED LIMIT: 20 MPH  
DESIGN SPEED LIMIT: 20 MPH



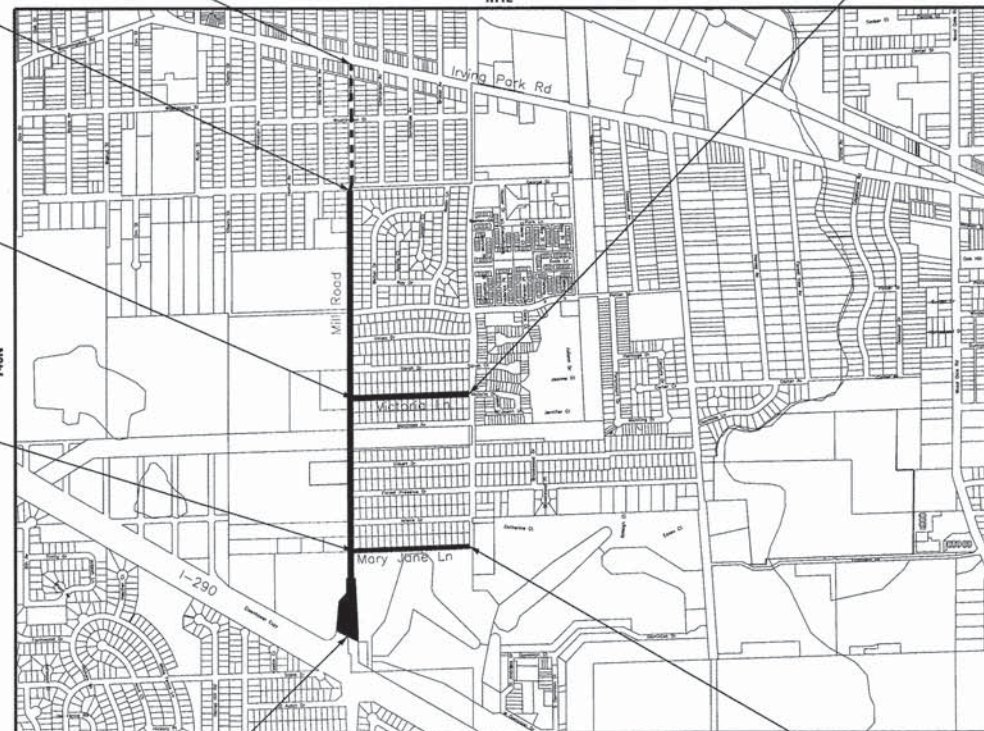
FAU 2625 MILL ROAD  
OMISSION ENDS  
STA 77+00

FAU 2625 MILL ROAD  
IMPROVEMENT ENDS  
OMISSION BEGINS  
STA 62+83

MUN 4028 VICTORIA LANE  
IMPROVEMENT BEGINS  
STA 120+19

MUN 4025 MARY JANE LANE  
IMPROVEMENT BEGINS  
STA 100+12

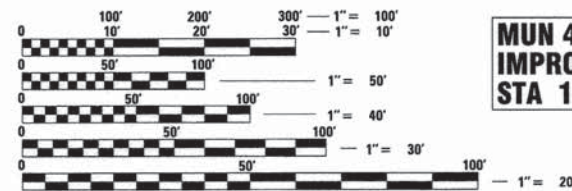
MUN 4028 VICTORIA LANE  
IMPROVEMENT ENDS  
STA 132+95



FAU 2625 MILL ROAD  
IMPROVEMENT BEGINS  
STA 11+50

GROSS LENGTH = 9,114 FT. = 1.726 MILES  
NET LENGTH = 7,697 FT. = 1.458 MILES

MUN 4025 MARY JANE LANE  
IMPROVEMENT ENDS  
STA 113+00



FULL SIZE PLANS HAVE BEEN PREPARED USING STANDARD  
ENGINEERING SCALES. REDUCED SIZED PLANS WILL NOT  
CONFORM TO STANDARD SCALES. IN MAKING MEASUREMENTS  
ON REDUCED PLANS, THE ABOVE SCALES MAY BE USED.

J.U.L.I.E. DESIGN STAGE REQUEST  
DIG. No. A3012822



CONTACT JULIE AT 811 OR 800-892-0123  
WITH THE FOLLOWING:

COUNTY = DUPAGE  
CITY-TOWNSHIP = WOOD DALE-ADDISON  
SEC. & 1/4 SEC. NO. = S17 E 1/2  
48 HOURS (2 working days) BEFORE YOU DIG

CONTRACT NO. 61C61



PROJECT MANAGER  
LICENSE EXPIRES 11-30-2017

PROJECT ENGINEER

STATE OF ILLINOIS  
DEPARTMENT OF TRANSPORTATION  
DIVISION OF HIGHWAYS

APPROVED *Martin B. York* 1/14/16  
*Rubia Works* Director  
CITY OF WOOD DALE

PASSED *February 10, 2016*  
*Christopher Holt*  
DISTRICT 1 ENGINEER OF LOCAL ROADS AND STREETS

RELEASING FOR BID  
BASED ON LIMITED  
REVIEW *February 16, 2016*  
*John Furtman*  
DEPUTY DIRECTOR OF  
HIGHWAYS, REGION 1 ENGINEER

PRINTED BY THE AUTHORITY  
OF THE STATE OF ILLINOIS

B&W PROJECT NO.: 150676 DATE: 01-25-16

FEDERAL AID PROGRAM ENGINEER: FAWAD AQUEEL, P.E. (847-705-4021) SCHAUMBURG, IL



**GENERAL NOTES**

- ALL CONSTRUCTION SHALL BE DONE IN ACCORDANCE WITH THE DETAILS IN THE PLANS, THE SPECIAL PROVISIONS INCLUDED IN THE CONTRACT DOCUMENTS, AND THE LATEST EDITION OF THE FOLLOWING STATE OF ILLINOIS SPECIFICATIONS: "THE STANDARD SPECIFICATIONS FOR ROAD AND BRIDGE CONSTRUCTION" (REFERRED TO AS THE "STANDARD SPECIFICATIONS"), THE "SUPPLEMENTAL SPECIFICATIONS AND RECURRING SPECIAL PROVISIONS", THE "MANUAL ON UNIFORM TRAFFIC CONTROL DEVICES FOR STREETS AND HIGHWAYS", THE "MANUAL OF TEST PROCEDURES FOR MATERIALS" AND THE "STANDARD SPECIFICATIONS FOR WATER AND SEWER MAIN CONSTRUCTION IN ILLINOIS".
- THE LOCATIONS OF PUBLIC OR PRIVATE UTILITIES SHOWN ON THE PLANS REPRESENTS ONLY THE OPINION OF THE CITY AND IS ONLY INCLUDED FOR THE CONVENIENCE OF THE BIDDER AND THE ACCURACY IS NOT GUARANTEED. THE CONTRACTOR SHALL BE RESPONSIBLE FOR THE PROTECTION OF ALL UNDERGROUND OR SURFACE UTILITIES, INCLUDING SPRINKLER SYSTEMS, EVEN THOUGH THEY MAY NOT BE SHOWN ON THE PLANS.
- THE CONTRACTOR SHALL NOTIFY THE CITY PUBLIC WORKS DIRECTOR, MATT YORK 630-787-3765, AT LEAST 48 HOURS IN ADVANCE OF BEGINNING WORK TO OBTAIN CITY UTILITY LOCATIONS.
- THE CONTRACTOR MAY OBTAIN MUNICIPAL WATER IN BULK, AT NO CHARGE, AS LONG AS THERE IS NOT A "WATERING BAN" IN EFFECT. THE INDISCRIMINATE USE OF FIRE HYDRANTS IS STRICTLY PROHIBITED. WATER FOR CONSTRUCTION SHALL BE METERED OR OTHERWISE ACCOUNTED FOR AND A DAILY LOG MAINTAINED. THE CONTRACTOR SHALL PROVIDE THE WATER TRUCK AND DRIVER REQUIRED TO OBTAIN AND TRANSPORT THIS WATER. THE CITY RESERVES THE RIGHT TO RESTRICT OR REFUSE THE USE OF CITY WATER IF DEEMED NECESSARY.
- ACCESS TO PRIVATE DRIVEWAYS SHALL BE PROVIDED AT ALL TIMES EXCEPT DURING ACTUAL CONSTRUCTION ADJACENT THERE TO. TEMPORARY RAMPS SHALL BE CONSTRUCTED AS NEEDED TO PROVIDE SUCH ACCESS, UTILIZING AGGREGATE SURFACE COURSE FOR TEMPORARY ACCESS.
- IT WILL BE THE CONTRACTOR'S RESPONSIBILITY TO NOTIFY THE ENGINEER, RESIDENTS AND THE CITY WHEN ACCESS TO DRIVEWAYS WILL BE TEMPORARILY CLOSED DUE TO CURB AND GUTTER AND/OR DRIVEWAY REPLACEMENT. THE CONTRACTOR SHALL DISTRIBUTE NOTICES PROVIDED BY THE CITY TO RESIDENTS AT LEAST 24 HOURS PRIOR TO PLANNED CLOSURE. EVERY EFFORT SHALL BE MADE TO ACCOMMODATE ACCESS TO THESE PROPERTIES INCLUDING KNOCKING ON DOORS WHEN DRIVEWAYS ARE ABOUT TO BE CLOSED.
- THE CONTRACTOR SHALL CONTACT THE LOCAL AGENCY MATERIAL INSPECTOR (SOIL AND MATERIAL CONSULTANTS - THOMAS JOHNSON - 847-870-0544) AT LEAST 48 HOURS PRIOR TO ANY CONCRETE OR HOT-MIX ASPHALT MATERIAL DELIVERIES.
- THE DAYS PAVING OPERATION SHOULD RESULT IN A SINGLE TRANSVERSE JOINT. ANY COLD LONGITUDINAL JOINTS WILL NOT BE ACCEPTED. PROVIDING A SINGLE TRANSVERSE JOINT SHALL BE ACCOMPLISHED BY PAVING ONE LANE OF SUFFICIENT LENGTH THAT WILL ALLOW FOR THE PAVING OF THE ADJACENT LANE IN THE SAME DAY.
- IN AREAS WHERE THE EXISTING DRIVEWAY, SIDEWALK, OR CURB AND GUTTER IS TO BE REMOVED AND REPLACED, THE REMOVAL AND DISPOSAL OF ANY ADDITIONAL MATERIAL REQUIRED TO ESTABLISH THE PROPOSED DRIVEWAY, SIDEWALK, OR CURB AND GUTTER SUBGRADE ELEVATION SHALL BE INCLUDED IN THE APPROPRIATE REMOVAL PAY ITEMS.
- THE CONTRACTOR WILL BE REQUIRED TO USE A STEEL PLATE OR PLATES TO CLOSE ANY GAPS OCCURRING WHEN A FRAME IS OFFSET FROM THE STRUCTURE. THE STEEL PLATE SHALL BE 1/2-INCH THICK AND APPROXIMATELY 6-INCH WIDE BY 24-INCH LONG. SOME ADJUSTMENT IN SIZE MAY BE NECESSARY TO PREVENT THE STEEL PLATE FROM OVERHANGING THE OUTSIDE OF THE STRUCTURE WALL. THE STEEL PLATE SHALL BE BEDDED IN AND COVERED WITH MORTAR. THIS WORK SHALL BE INCLUDED IN THE COST OF STRUCTURE ADJUSTMENTS OR STRUCTURE RECONSTRUCTIONS.
- THE CURB SHALL BE TAPERED TO THE GUTTER IN A FIVE (5) FOOT LENGTH WHEREVER THE CURB AND GUTTER TERMINATES, WITH AN EXPANSION JOINT PLACED AT THE START OF THE TAPER.
- IN ALL TRENCHES CROSSING DRIVEWAYS, SIDEWALKS, AND ALL PROPOSED AND EXISTING ROADWAYS, THE MATERIAL FOR THE TOP 12 INCHES SHALL BE CA-6 CRUSHED GRAVEL OR CRUSHED STONE AND BE INCLUDED IN THE PAY ITEM FOR TRENCH BACKFILL.
- DURING CONSTRUCTION, THE CONTRACTOR WILL BE PERMITTED TO LIMIT ON-STREET PARKING IN ORDER TO COMPLETE CONSTRUCTION OPERATIONS. THE CONTRACTOR WILL BE REQUIRED TO COORDINATE WITH THE MUNICIPALITY A MINIMUM OF 48 HOURS IN ADVANCE. IT WILL BE THE RESPONSIBILITY OF THE CONTRACTOR TO PLACE ADVANCE SIGNS TO ALERT RESIDENTS AND COMMUTERS OF THE CONSTRUCTION WORK. THE PLACEMENT OF THESE SIGNS SHALL TAKE PLACE 48 HOURS IN ADVANCE IN ORDER TO ALLOW SUFFICIENT TIME FOR RESIDENTS AND GENERAL PUBLIC TO REVISE THEIR PARKING PATTERNS.
- ALL NEW CLOSED MANHOLE LIDS SHALL BE LABELED "WATER", "STORM", OR "SANITARY" ACCORDING TO THE TYPE OF STRUCTURE ON WHICH IT IS INSTALLED

THE CONTRACTOR SHALL SUBMIT A PRE-PLANNED SEQUENCE OF WORK AT THE PRECONSTRUCTION CONFERENCE FOR REVIEW AND APPROVAL. WORK SHALL BE SCHEDULED TO MINIMIZE INCONVENIENCE TO RESIDENTS AND TO MAINTAIN A REASONABLE LEVEL OF CONSTRUCTION EFFICIENCY. THE CITY RESERVES THE RIGHT TO RESTRICT WORK ON ANY AREA IF TRAFFIC CONTROL OPERATIONS BECOME UNACCEPTABLE.

SUGGESTED SEQUENCE OF CONSTRUCTION:

- PRIOR TO CONSTRUCTION, INSTALL ALL TEMPORARY EROSION CONTROL DEVICES NECESSARY AND ESTABLISH ALL TRAFFIC CONTROL REQUIRED.
- CONSTRUCT CURB AND GUTTER REPAIRS ON ONE SIDE OF THE STREET AT A TIME, TO MINIMIZE CONGESTION. PROVIDE ACCESS TO DRIVEWAYS WITH TEMPORARY AGGREGATE AFTER 72 HOURS OF CURING TIME.
- MILL PAVEMENT AND INSTALL CLASS D PATCHES (MILL ROAD, MARY JANE LANE) OR COMPLETE AGGREGATE BASE REPAIRS (VICTORIA LANE).
- INSTALL PIPE DRAINS, CONNECTING SUMP LINES TO THE CURB, IF NOT ALREADY CONNECTED TO THE STORM SEWER, AS DIRECTED BY THE ENGINEER.
- REPEAT STEPS 3 AND 4 FOR THE OTHER SIDE OF THE STREET.
- BACKFILL BEHIND THE CURB AND RESTORE PARKWAYS.
- INSTALL HMA BINDER COURSE. BINDER COURSE SHALL BE INSTALLED WITHIN 10 DAYS OF THE START OF HMA MILLING.
- BEGIN INSTALLING DRIVEWAYS.

AFTER ALL STAGES HAVE BEEN COMPLETED:

- FINISH DRIVEWAYS AND PARKWAY GRADING AND INSTALL TOPSOIL AND SOD.
- INSTALL HMA SURFACE COURSE.
- COMPLETE PUNCH LIST ITEMS AND REMOVE TEMPORARY EROSION CONTROL ITEMS ONCE SOD ESTABLISHES.

CONSTRUCTION STAGING NOTES:

- ALL STREETS SHALL BE OPEN TO TRAFFIC AT THE END OF EACH DAY WITH BARRICADES PLACED AROUND ALL PARKED EQUIPMENT, STOCKPILES AND STEEP EMBANKMENTS.
- ALL RESIDENTS SHALL HAVE ACCESS TO THEIR DRIVEWAYS AT THE END OF EACH DAY, EXCEPT DURING ADJACENT CURB AND GUTTER CONSTRUCTION OR CONCRETE DRIVEWAY REPLACEMENT.
- ACCESS FOR MAIL SERVICE, GARBAGE COLLECTION, SCHOOL BUSES AND EMERGENCY VEHICLES MUST BE MAINTAINED AT ALL TIMES.

**INDEX OF SHEETS**

1	COVER SHEET
2	INDEX OF SHEETS, HIGHWAY STANDARDS AND GENERAL NOTES
3 - 5	SUMMARY OF QUANTITIES
6 - 8	EXISTING AND PROPOSED TYPICAL SECTIONS
9 - 13	GEOMETRIC PLAN - MILL ROAD
14 - 15	GEOMETRIC PLAN - MARY JANE LANE
16 - 17	GEOMETRIC PLAN - VICTORIA LANE
18	MISCELLANEOUS DETAILS
19	(BD-08) DETAILS FOR FRAMES AND LIDS ADJUSTMENT WITH MILLING
20	(BD-24) CURB OR CURB AND GUTTER REMOVAL AND REPLACEMENT
21	(BD-32) BUTT JOINT AND HMA TAPER DETAILS
22	(TC-10) TRAFFIC CONTROL AND PROTECTION FOR SIDE ROADS, INTERSECTIONS, AND DRIVEWAYS
23	(TC-13) TYPICAL PAVEMENT MARKINGS
24	(TC-22) ARTERIAL ROAD INFORMATION SIGN

**HIGHWAY STANDARDS**

000001-06	STANDARD SYMBOLS, ABBREVIATIONS AND PATTERNS
280001-07	TEMPORARY EROSION CONTROL SYSTEMS
424001-08	PERPENDICULAR CURB RAMPS FOR SIDEWALKS
424011-02	CORNER PARALLEL CURB RAMPS FOR SIDEWALKS
424016-02	MID-BLOCK CURB RAMPS FOR SIDEWALKS
424021-03	DEPRESSED CORNER FOR SIDEWALKS
442201-03	CLASS C AND D PATCHES
604001-04	FRAME AND LIDS TYPE 1
606001-06	CONCRETE CURB TYPE B AND COMBINATION CONCRETE CURB AND GUTTER
701006-05	OFF-RD OPERATIONS, 2L, 2W, 15' (4.5 m) TO 24" (600 mm) FROM PAVEMENT
701301-04	LANE CLOSURE, 2L, 2W, SHORT TIME OPERATIONS
701311-03	LANE CLOSURE 2L, 2W MOVING OPERATIONS - DAY ONLY
701501-06	URBAN LANE CLOSURE, 2L, 2W, UNDIVIDED
701801-06	SIDEWALK, CORNER OR CROSSWALK CLOSURE
701901-05	TRAFFIC CONTROL DEVICES
780001-05	TYPICAL PAVEMENT MARKINGS

COPYRIGHT © 2016, BY BAXTER & WOODMAN, INC.  
 STATE OF ILLINOIS PROFESSIONAL ENGINEERING REGISTRATION BOARD  
 LICENSE NO. 389-001001-0000 EXP. 02/12/2018  
 566K6C  
 2/12/2018 AM 8:02:30 AM  
 \\s01c4r4\asf-01\B\Default.plt  
 ... \V\50676-RD-GenNotes.dgn  
 in:\C\Y8101\06\WDD\50676-Mill Road - Street and MW\CA001\Sheets\50676SHT-RD-GenNotes.dgn

	DESIGNED - JDM	REVISED - PER IDOT REVIEW 1-20-16
	DRAWN - KAR	REVISED -
	CHECKED - JJF	REVISED -
	DATE - 01-25-16	FILE - 150676SHT-RD-GenNotes.dgn

**STATE OF ILLINOIS  
DEPARTMENT OF TRANSPORTATION**

**GENERAL NOTES, HIGHWAY STANDARDS AND  
INDEX OF SHEETS**

SCALE: NONE STA. TO STA.

F.A.U. RTE.	SECTION	COUNTY	TOTAL SHEETS	SHEET NO.
2625	14-00051-00-RS	DuPAGE	24	2
FED. ROAD DIST. NO. [ILLINOIS] FED. AID PROJECT M-4003(303)			CONTRACT NO. 61C61	







**SUMMARY OF QUANTITIES**

CODE NO.	ITEM	UNIT	TOTAL QUANTITY	CONSTRUCTION CODE		
				MILL ROAD 75% FED 25% CITY	MARY JANE LANE 100% CITY	VICTORIA LANE 100% CITY
				ROADWAY URBAN	NON PARTICIPATING	NON PARTICIPATING
				0005	0005	0005
42400400	PORTLAND CEMENT CONCRETE SIDEWALK 7 INCH	SQ FT	910	650	130	130
42400800	DETECTABLE WARNINGS	SQ FT	56	56		
44000159	HOT-MIX ASPHALT SURFACE REMOVAL, 2 1/2"	SQ YD	19,810	16,580	3,230	
44000166	HOT-MIX ASPHALT SURFACE REMOVAL, 4 1/4"	SQ YD	3,620			3,620
44000200	DRIVEWAY PAVEMENT REMOVAL	SQ YD	276	142	34	100
44000600	SIDEWALK REMOVAL	SQ FT	8,800	6,200	1,300	1,300
44201692	CLASS D PATCHES, TYPE II, 4 INCH	SQ YD	100		100	
44201694	CLASS D PATCHES, TYPE III, 4 INCH	SQ YD	100		100	
44201696	CLASS D PATCHES, TYPE IV, 4 INCH	SQ YD	425		425	
44201765	CLASS D PATCHES, TYPE II, 10 INCH	SQ YD	266	266		
44201769	CLASS D PATCHES, TYPE III, 10 INCH	SQ YD	432	432		
44201771	CLASS D PATCHES, TYPE IV, 10 INCH	SQ YD	1,687	1,687		
44300200	STRIP REFLECTIVE CRACK CONTROL TREATMENT	FOOT	6,430	5,140	1,290	
56500600	DOMESTIC WATER SERVICE BOXES TO BE ADJUSTED	EACH	5	5		
60250200	CATCH BASINS TO BE ADJUSTED	EACH	5		2	3

\* INDICATES SPECIALTY ITEM

CODE NO.	ITEM	UNIT	TOTAL QUANTITY	CONSTRUCTION CODE		
				MILL ROAD 75% FED 25% CITY	MARY JANE LANE 100% CITY	VICTORIA LANE 100% CITY
				ROADWAY URBAN	NON PARTICIPATING	NON PARTICIPATING
				0005	0005	0005
60260100	INLETS TO BE ADJUSTED	EACH	16	12	2	2
60406100	FRAMES AND LIDS, TYPE 1, CLOSED LID	EACH	1	1		
66300105	CALCIUM CHLORIDE APPLIED	TON	11			11
* 66900200	NON-SPECIAL WASTE DISPOSAL	CU YD	335	156	41	138
* 66900450	SPECIAL WASTE PLANS AND REPORTS	LSUM	1.00	0.66	0.17	0.17
* 66900530	SOIL DISPOSAL ANALYSIS	EACH	9	7	1	1
67000400	ENGINEER'S FIELD OFFICE, TYPE A	CAL MO	3	3		
67100100	MOBILIZATION	LSUM	1.00	0.66	0.17	0.17
70102620	TRAFFIC CONTROL AND PROTECTION, STANDARD 701501	LSUM	1.00	0.66	0.17	0.17
70102640	TRAFFIC CONTROL AND PROTECTION, STANDARD 701801	LSUM	1.00	0.66	0.17	0.17
70300100	SHORT-TERM PAVEMENT MARKING	FOOT	3,849	2,567	644	638
70300150	SHORT TERM PAVEMENT MARKING REMOVAL	SQ FT	1,284	856	215	213
* 78000100	THERMOPLASTIC PAVEMENT MARKING - LETTERS AND SYMBOLS	SQ FT	290		290	
* 78000200	THERMOPLASTIC PAVEMENT MARKING - LINE 4"	FOOT	3,550	3,550		
* 78000400	THERMOPLASTIC PAVEMENT MARKING - LINE 6"	FOOT	760	760		

\* INDICATES SPECIALTY ITEM

COPYRIGHT © 2016 BY BAXTER & WOODMAN, INC.  
 STATE OF ILLINOIS - PROFESSIONAL DESIGN FIRM  
 LICENSE NO. 18-00000000-0000-0000-0000-0000  
 DATE 01/25/16  
 PROJECT: 150676SHT-RD-S00.dgn  
 DRAWN BY: KAR  
 CHECKED BY: JUF  
 DATE: 01-25-16  
 FILE: 150676SHT-RD-S00.dgn

<b>BAXTER &amp; WOODMAN</b> Consulting Engineers	DESIGNED - JDM	REVISED - PER IDOT REVIEW 1-20-16
	DRAWN - KAR	REVISED -
	CHECKED - JUF	REVISED -
	DATE - 01-25-16	FILE - 150676SHT-RD-S00.dgn

**STATE OF ILLINOIS  
DEPARTMENT OF TRANSPORTATION**

**SUMMARY OF QUANTITIES**

SCALE: NONE STA. TO STA.

F.A.U. RTE. 2625	SECTION 14-00051-00-RS	COUNTY DuPAGE	TOTAL SHEETS 24	SHEET NO. 4
FED. ROAD DIST. NO. ILLINOIS FED. AID PROJECT M-4003(303)		CONTRACT NO. 61C61		

**SUMMARY OF QUANTITIES**

CODE NO.	ITEM	UNIT	TOTAL QUANTITY	CONSTRUCTION CODE		
				MILL ROAD 75% FED 25% CITY	MARY JANELANE 100% CITY	VICTORIA LANE 100% CITY
				ROADWAY	NON PARTICIPATING	NON PARTICIPATING
				URBAN 0005	0005	0005
78000600	THERMOPLASTIC PAVEMENT MARKING - LINE 12"	FOOT	420	420		
78000650	THERMOPLASTIC PAVEMENT MARKING - LINE 24"	FOOT	195	195		
78300100	PAVEMENT MARKING REMOVAL	SQ.FT	108	108		
Z0004510	HOT-MIX ASPHALT DRIVEWAY PAVEMENT, 3"	SQ.YD	213	79	34	100
Z0004562	COMBINATION CONCRETE CURB AND GUTTER REMOVAL AND REPLACEMENT	FOOT	2,710	1,250	320	1,140
Z0013798	CONSTRUCTION LAY OUT	LSUM	1.00	0.66	0.17	0.17
Z0030850	TEMPORARY INFORMATION SIGNING	SQ.FT	52	52		
X4021000	TEMPORARY ACCESS (PRIVATE ENTRANCE)	EACH	34			34
X4023000	TEMPORARY ACCESS (ROAD)	EACH	2			2
X6030310	FRAMES AND LIDS TO BE ADJUSTED (SPECIAL)	EACH	14	13	1	
X0009097	SPEED HUMP REMOVAL	EACH	4		4	
X0009098	SPEED HUMP REPLACEMENT	EACH	4		4	

\* INDICATES SPECIALTY ITEM

COPYRIGHT © 2016 BY BAXTER & WOODMAN, INC.  
 STATE OF ILLINOIS - PROFESSIONAL DESIGN FIRM  
 LICENSE NO. 184-00121 - EXPIRES 4/30/2017  
 2/12/2016 8:02:50 AM  
 ...\\pc1dr\pdef-bw\Default.plt  
 ...\\pc1dr\pdef-bw\50676\_RoadwayPen.tbl  
 i:\crys\l\l\l\l\50676-Mill Road - Street and WM\CADD\Sheets\Roadway\50676SHT-RD-S00.dgn



DESIGNED - JDM	REVISED - PER IDOT REVIEW 1-20-16
DRAWN - KAR	REVISED -
CHECKED - JJF	REVISED -
DATE - 01-25-16	FILE - 150676SHT-RD-S00.dgn

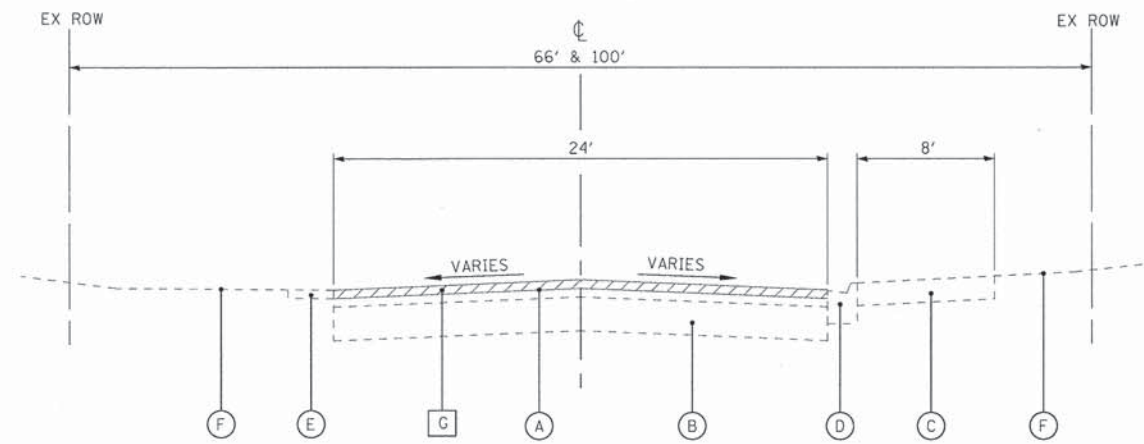
**STATE OF ILLINOIS  
DEPARTMENT OF TRANSPORTATION**

**SUMMARY OF QUANTITIES**

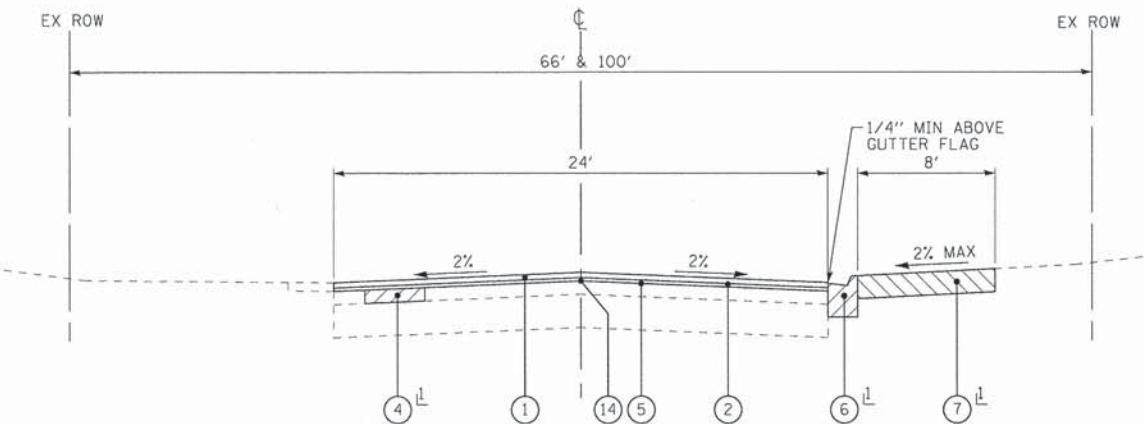
SCALE: NONE      STA.      TO STA.

F.A.U. RTE.	SECTION	COUNTY	TOTAL SHEETS	SHEET NO.
2625	14-00051-00-RS	DUPAGE	24	5
FED. ROAD DIST. NO.			ILLINOIS FED. AID PROJECT M-4003(303)	
			CONTRACT NO. 61C61	

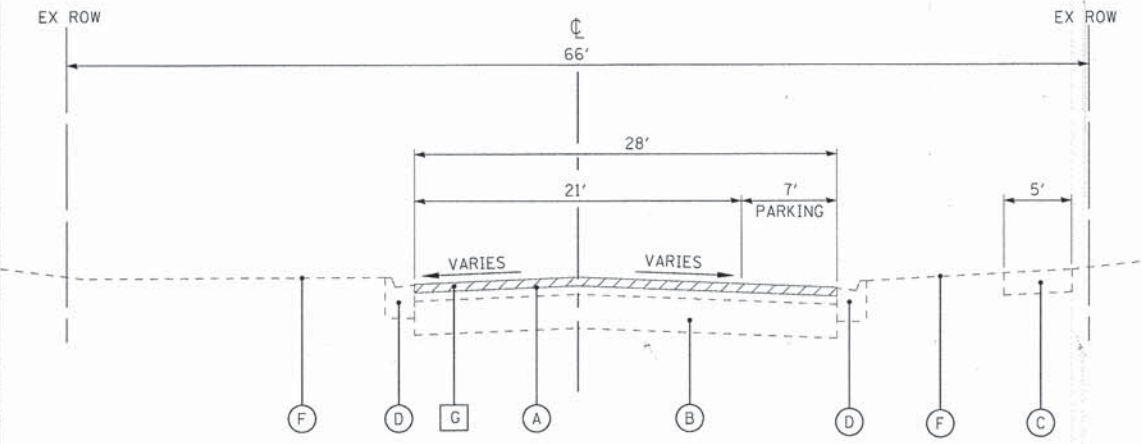




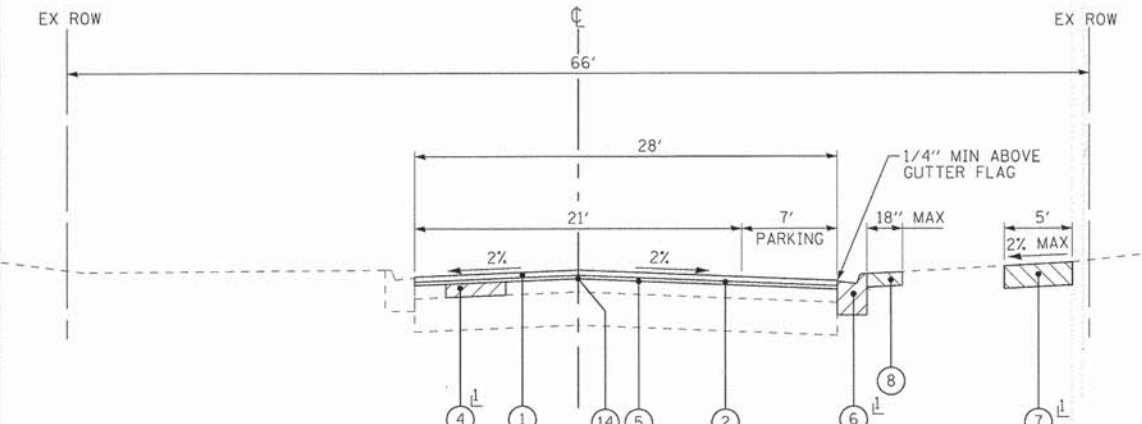
**EXISTING TYPICAL SECTION**  
MILL ROAD STA 11+50 TO STA 23+00  
(NOT TO SCALE)



**PROPOSED TYPICAL SECTION**  
MILL ROAD STA 11+50 TO STA 23+00  
(NOT TO SCALE)      ↓ AS DETERMINED BY THE ENGINEER



**EXISTING TYPICAL SECTION**  
MILL ROAD STA 23+00 TO STA 36+80, STA 37+88 TO STA 59+62  
(NOT TO SCALE)



**PROPOSED TYPICAL SECTION**  
MILL ROAD STA 23+00 TO STA 36+80, STA 37+88 TO STA 59+62  
(NOT TO SCALE)      ↓ AS DETERMINED BY THE ENGINEER

- EXISTING LEGEND**
- (A) EXISTING HOT-MIX ASPHALT PAVEMENT
  - (B) EXISTING AGGREGATE BASE COURSE
  - (C) EXISTING SIDEWALK
  - (D) EXISTING CONCRETE CURB AND GUTTER
  - (E) EXISTING SHOULDER
  - (F) GROUND SURFACE
  - (G) HOT-MIX ASPHALT SURFACE REMOVAL, 2 1/2"
  - (H) HOT-MIX ASPHALT SURFACE REMOVAL, 4 1/4"
  - [Hatched Box] REMOVAL ITEM

- PROPOSED LEGEND**
- (1) HOT-MIX ASPHALT SURFACE COURSE, MIX "D", N50 - 1 3/4"
  - (2) LEVELING BINDER (MACHINE METHOD), N50 - 3/4" AVG
  - (3) PREPARATION OF BASE
  - (4) CLASS D PATCHES, 10" MILL ROAD, 4" MARY JANE LANE
  - (5) BITUMINOUS MATERIALS (TACK COAT)
  - (6) COMBINATION CONCRETE CURB AND GUTTER REMOVAL AND REPLACEMENT
  - (7) SIDEWALK REMOVAL  
PCC SIDEWALK, 5"  
AGGREGATE BASE COURSE, TYPE B, 4"
  - (8) PARKWAY RESTORATION  
(REMOVAL AND DISPOSAL OF UNSUITABLE MATERIAL  
TOPSOIL FURNISH AND PLACE, 4"  
SODDING, SALT TOLERANT)
  - (9) HOT-MIX ASPHALT SURFACE COURSE, MIX "D", N50 - 2"
  - (10) HOT-MIX ASPHALT BINDER COURSE, IL-19.0, N50 - 2 1/2"
  - (11) REMOVAL AND DISPOSAL OF UNSUITABLE MATERIAL  
AGGREGATE SUBGRADE IMPROVEMENT 12"
  - (12) AGGREGATE BASE REPAIR
  - (13) GEOTECHNICAL FABRIC FOR GROUND STABILIZATION
  - (14) STRIP REFLECTIVE CRACK CONTROL

**HOT-MIX ASPHALT MIXTURE REQUIREMENTS**

CONTRACTOR SHALL MILL BEFORE PATCHING.

MIXTURE TYPE	AIR VOIDS @ Ndes
<b>PAVEMENT RESURFACING</b>	
HOT-MIX ASPHALT SURFACE COURSE, MIX "D", N50 (IL 9.5 mm) - 1 3/4"	4% @ 50 Gyr.
LEVELING BINDER (MACHINE METHOD), N50 - 3/4"	4% @ 50 Gyr.
<b>FULL DEPTH PAVEMENT</b>	
HOT-MIX ASPHALT SURFACE COURSE, MIX "D", N50 (IL 9.5 mm) - 2"	4% @ 50 Gyr.
HOT-MIX ASPHALT BINDER COURSE, IL-19.0, N50 - 2 1/2"	4% @ 50 Gyr.
<b>DRIVEWAY PAVEMENT</b>	
HOT-MIX ASPHALT SURFACE COURSE, MIX "D", N50 (IL 9.5 mm) - 3"	4% @ 50 Gyr.
<b>PATCHING</b>	
CLASS D PATCHES (HMA BINDER IL-19.0mm) - 4", 10"	4% @ 70 Gyr.

THE UNIT WEIGHT USED TO CALCULATE ALL HMA MIXTURE QUANTITIES IS 112 LBS/SQ YD/IN.  
THE "AC TYPE" FOR POLYMERIZED HMA MIXES SHALL BE "SBS/SBR PG 76-22" AND FOR NON-POLYMERIZED HMA THE "AC TYPE" SHALL BE "PG 64-22" UNLESS MODIFIED BY THE DISTRICT ONE SPECIAL PROVISIONS.  
FOR USE OF RECYCLED MATERIALS SEE DISTRICT ONE SPECIAL PROVISIONS.

COPYRIGHT © 2016, BY BAXTER & WOODMAN, INC.  
 STATE OF ILLINOIS - PROFESSIONAL DESIGN FIRM  
 LICENSE NO. - 184-00121 - EXPIRES 4/30/2017  
 2/2/2016 8:02:24 AM  
 ...:\p\ordr\150676\RD-TypSec.dgn  
 ...:\p\ordr\150676\Roadway\150676SHT-RD-TypSec.dgn  
 ...:\p\ordr\150676\Roadway\150676SHT-RD-TypSec.dgn

DESIGNED - JDM	REVISED - PER IDOT REVIEW 1-20-16
DRAWN - KAR	REVISED -
CHECKED - JJF	REVISED -
DATE - 01-25-16	FILE - 150676SHT-RD-TypSec.dgn

**STATE OF ILLINOIS  
DEPARTMENT OF TRANSPORTATION**

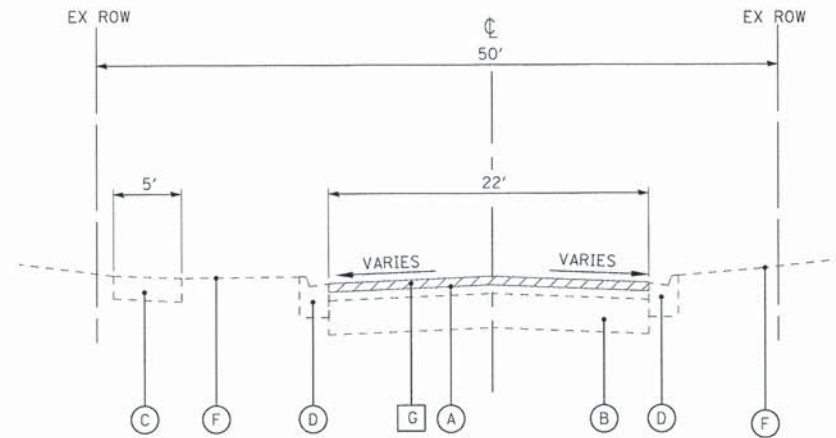
**TYPICAL SECTIONS AND HOT-MIX ASPHALT MIXTURE REQUIREMENTS**

SCALE: NONE      STA. TO STA.

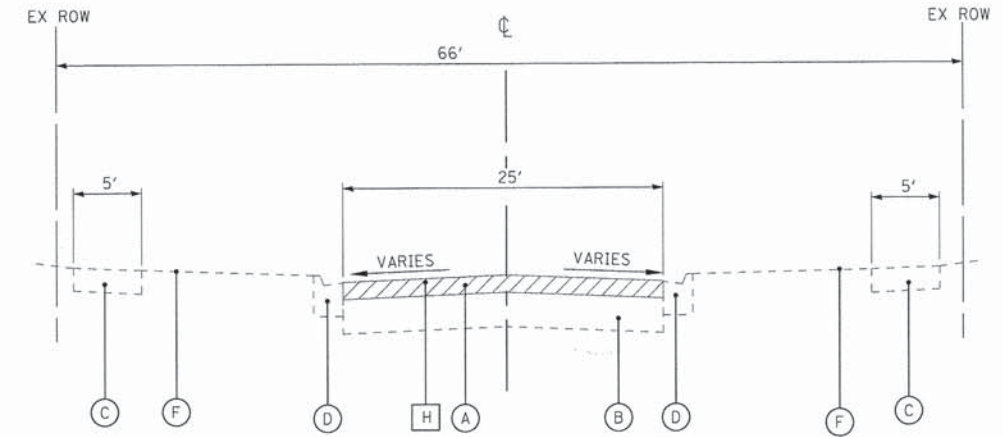
F.A.I. RTE.	SECTION	COUNTY	TOTAL SHEETS	SHEET NO.
2625	14-00051-00-RS	DuPAGE	24	6
FED. ROAD DIST. NO. ILLINOIS FED. AID PROJECT M-4003(303)			CONTRACT NO. 61C61	



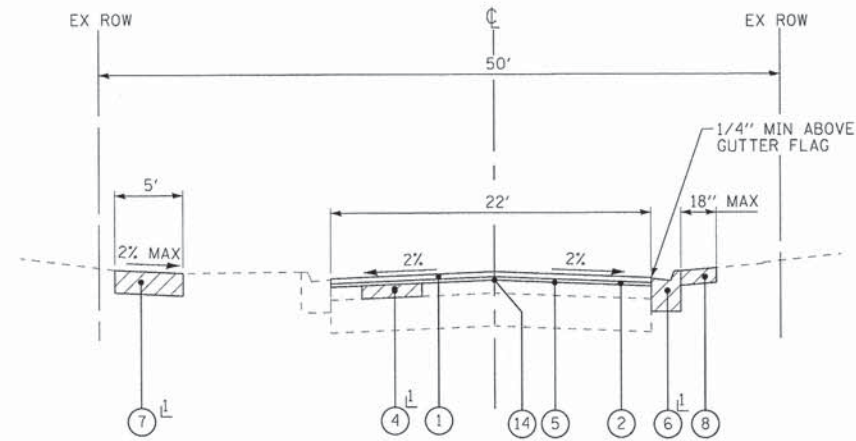




**EXISTING TYPICAL SECTION**  
**MARY JANE LANE STA 100+12 TO STA 113+00**  
 (NOT TO SCALE)

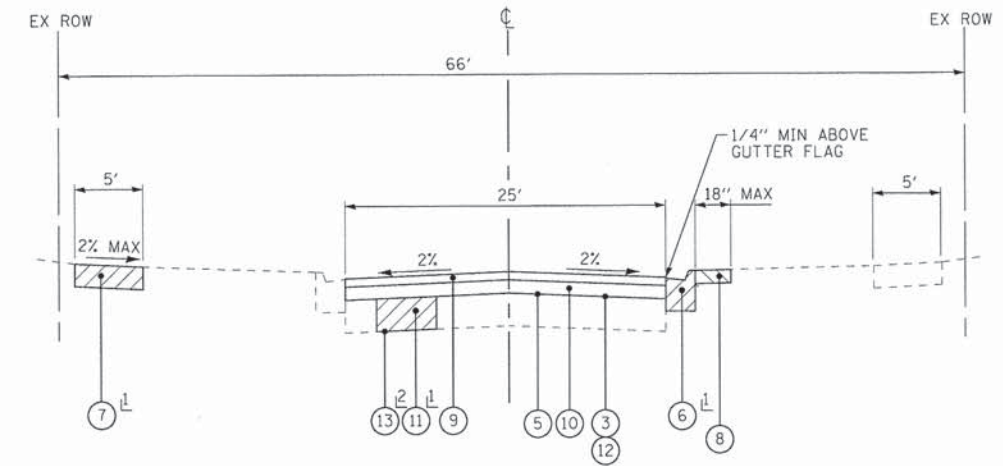


**EXISTING TYPICAL SECTION**  
**VICTORIA LANE STA 120+19 TO STA 132+95**  
 (NOT TO SCALE)



**PROPOSED TYPICAL SECTION**  
**MARY JANE LANE STA 100+12 TO STA 113+00**  
 (NOT TO SCALE)

Ⓡ AS DETERMINED BY THE ENGINEER



**PROPOSED TYPICAL SECTION**  
**VICTORIA LANE STA 120+19 TO STA 132+95**  
 (NOT TO SCALE)

Ⓡ AS DETERMINED BY THE ENGINEER  
 Ⓢ ONLY USED FOR FULL WIDTH PATCHES, AS DETERMINED BY THE ENGINEER

**EXISTING LEGEND**

- Ⓐ EXISTING HOT-MIX ASPHALT PAVEMENT
- Ⓑ EXISTING AGGREGATE BASE COURSE
- Ⓒ EXISTING SIDEWALK
- Ⓓ EXISTING CONCRETE CURB AND GUTTER
- Ⓔ EXISTING SHOULDER
- Ⓕ GROUND SURFACE
- Ⓖ HOT-MIX ASPHALT SURFACE REMOVAL, 2 1/2"
- Ⓗ HOT-MIX ASPHALT SURFACE REMOVAL, 4 1/4"
- ▨ REMOVAL ITEM

**PROPOSED LEGEND**

- ① HOT-MIX ASPHALT SURFACE COURSE, MIX "D", N50 - 1 3/4"
- ② LEVELING BINDER (MACHINE METHOD), N50 - 3/4" AVG
- ③ PREPARATION OF BASE
- ④ CLASS D PATCHES, 10" MILL ROAD, 4" MARY JANE LANE
- ⑤ BITUMINOUS MATERIALS (TACK COAT)
- ⑥ COMBINATION CONCRETE CURB AND GUTTER REMOVAL AND REPLACEMENT
- ⑦ SIDEWALK REMOVAL  
 PCC SIDEWALK, 5"  
 AGGREGATE BASE COURSE, TYPE B, 4"
- ⑧ PARKWAY RESTORATION  
 (REMOVAL AND DISPOSAL OF UNSUITABLE MATERIAL  
 TOPSOIL FURNISH AND PLACE, 4"  
 SODDING, SALT TOLERANT)
- ⑨ HOT-MIX ASPHALT SURFACE COURSE, MIX "D", N50 - 2"
- ⑩ HOT-MIX ASPHALT BINDER COURSE, IL-19.0, N50 - 2 1/2"
- ⑪ REMOVAL AND DISPOSAL OF UNSUITABLE MATERIAL  
 AGGREGATE SUBGRADE IMPROVEMENT 12"
- ⑫ AGGREGATE BASE REPAIR
- ⑬ GEOTECHNICAL FABRIC FOR GROUND STABILIZATION
- ⑭ STRIP REFLECTIVE CRACK CONTROL

COPYRIGHT © 2016 BY BAXTER & WOODMAN, INC.  
 STATE OF ILLINOIS - PROFESSIONAL DESIGN FIRM  
 LICENSE NO. - 384-00121 - EXPIRES 4/30/2017  
 8060609  
 \\s01dr-v\pdpf-BW\_DeFault.plt  
 ...\\s01re\150676\_Roadway\150676.dwg  
 B:\Cyril\150676\150676-MillRoad - Street and MillRoad - TypSec.dgn  
 2/27/2016 8:02:55 AM



DESIGNED - JDM	REVISED - PER IDOT REVIEW 1-20-16
DRAWN - KAR	REVISED -
CHECKED - JJF	REVISED -
DATE - 01-25-16	FILE - 150676SHT-RD-TypSec.dgn

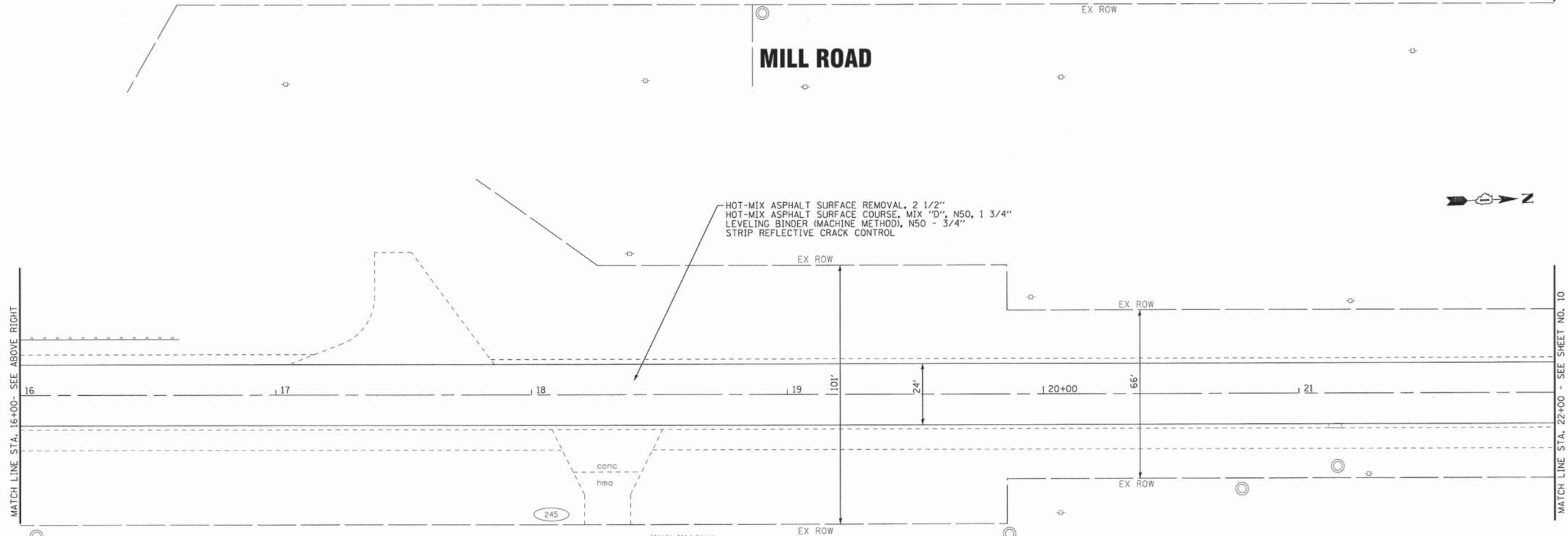
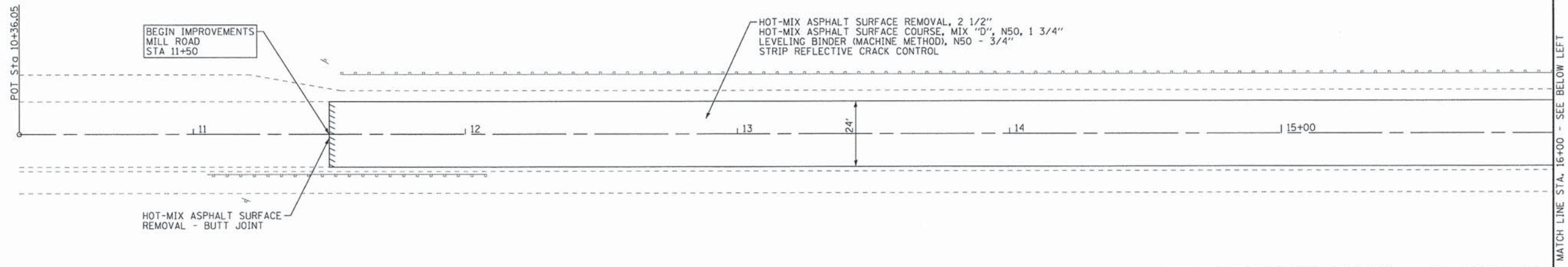
STATE OF ILLINOIS  
 DEPARTMENT OF TRANSPORTATION

**TYPICAL SECTIONS**

SCALE: NONE STA. TO STA.

F.A.U. RTE.	SECTION	COUNTY	TOTAL SHEETS	SHEET NO.
2625	14-00051-00-RS	DuPAGE	24	8
FED. ROAD DIST. NO. ILLINOIS FED. AID PROJECT M-4003303			CONTRACT NO. 61C61	





COPYRIGHT © 2016, BY BAXTER & WOODMAN, INC.  
 STATE OF ILLINOIS - PROFESSIONAL DESIGN FIRM  
 LICENSE NO. - 084-00127-EXPRES - 30/20/16  
 27/27/2016 8:02:26 AM  
 ...\\p01dr-v\p01f-BW\_DeFault.plt  
 ...\\p01r\150676\_Roadway\150676-MillRoad - Street and MW\CADD\Sheets\Roadway\150676SHT-RD-Plan1.dgn  
 ...\\p01r\150676\_Roadway\150676-MillRoad - Street and MW\CADD\Sheets\Roadway\150676SHT-RD-Plan1.dgn

<b>BAXTER &amp; WOODMAN</b> Consulting Engineers	DESIGNED - JDM	REVISED - PER IDOT REVIEW 1-20-16
	DRAWN - KAR	REVISED -
	CHECKED - JUF	REVISED -
	DATE - 01-25-16	FILE - 150676SHT-RD-Plan1.dgn

**STATE OF ILLINOIS  
DEPARTMENT OF TRANSPORTATION**

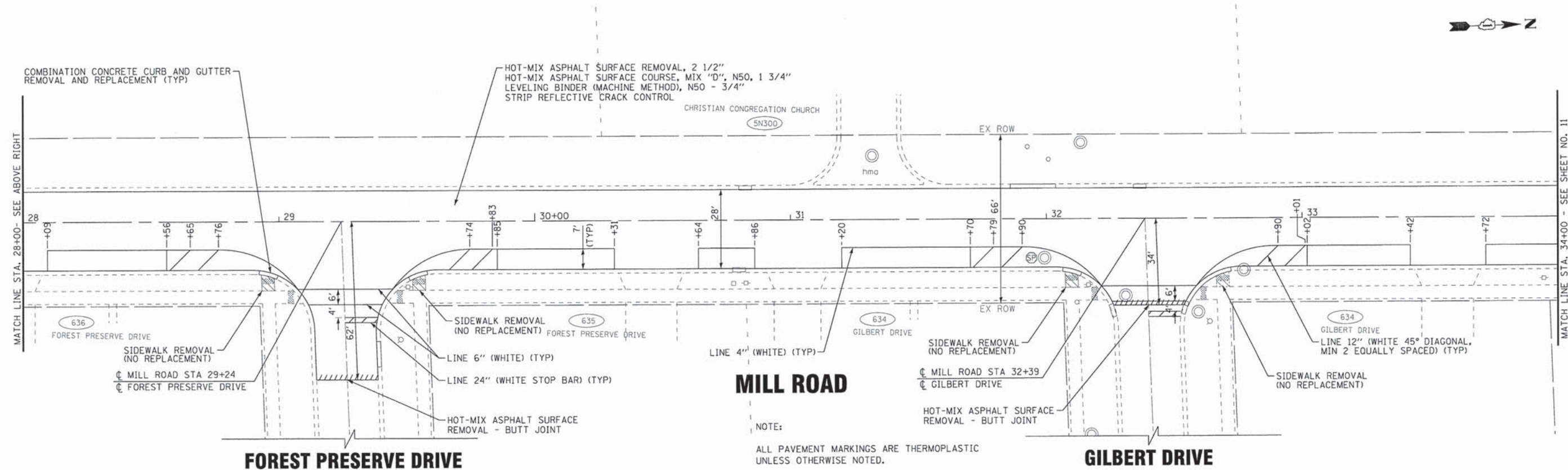
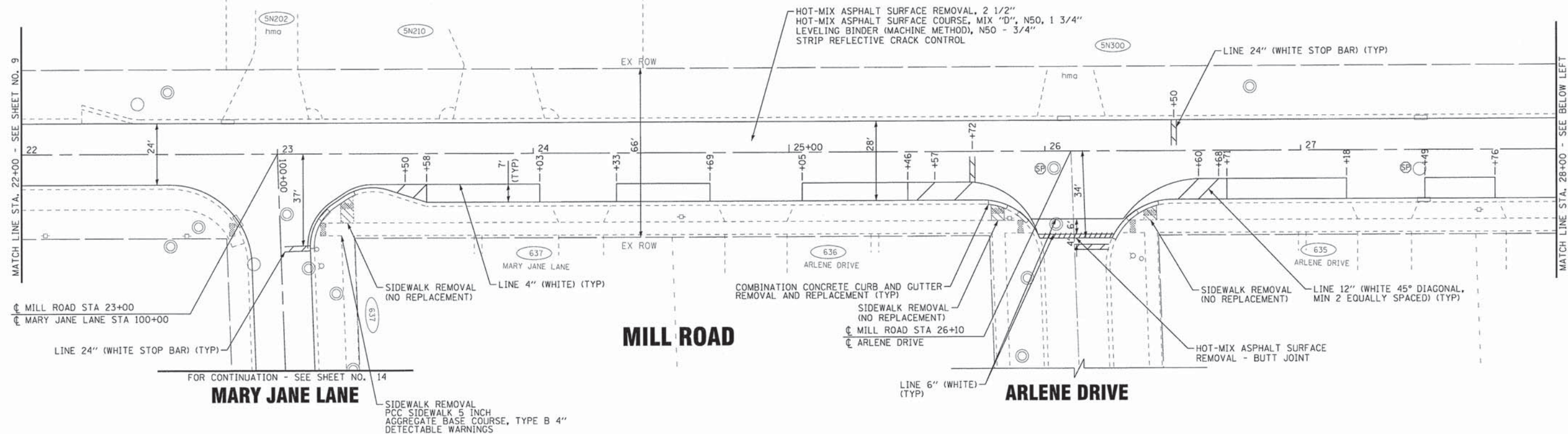
**GEOMETRIC PLAN  
MILL ROAD**

SCALE: 1" = 20'

STA. 10+36.05 TO STA. 22+00

F.A.U. RTE.	SECTION	COUNTY	TOTAL SHEETS	SHEET NO.
2625	14-00051-00-RS	DuPAGE	24	9
FED. ROAD DIST. NO. ILLINOIS FED. AID PROJECT M-4003303			CONTRACT NO. 61C61	





NOTE:  
ALL PAVEMENT MARKINGS ARE THERMOPLASTIC  
UNLESS OTHERWISE NOTED.

COPYRIGHT © 2016 BY BAXTER & WOODMAN, INC.  
 STATE OF ILLINOIS - PROFESSIONAL DESIGN FIRM  
 LICENSE NO. 184-00121 - EXPIRES 8/31/2017  
 560608  
 2/12/2016  
 \\s01\projects\150676\Roadway\150676SHT-RD-Plan2.dgn  
 I:\Crystal\Lake\WDDL\150676-MillRoad - Street and WA\CADD\Sheets\150676SHT-RD-Plan2.dgn

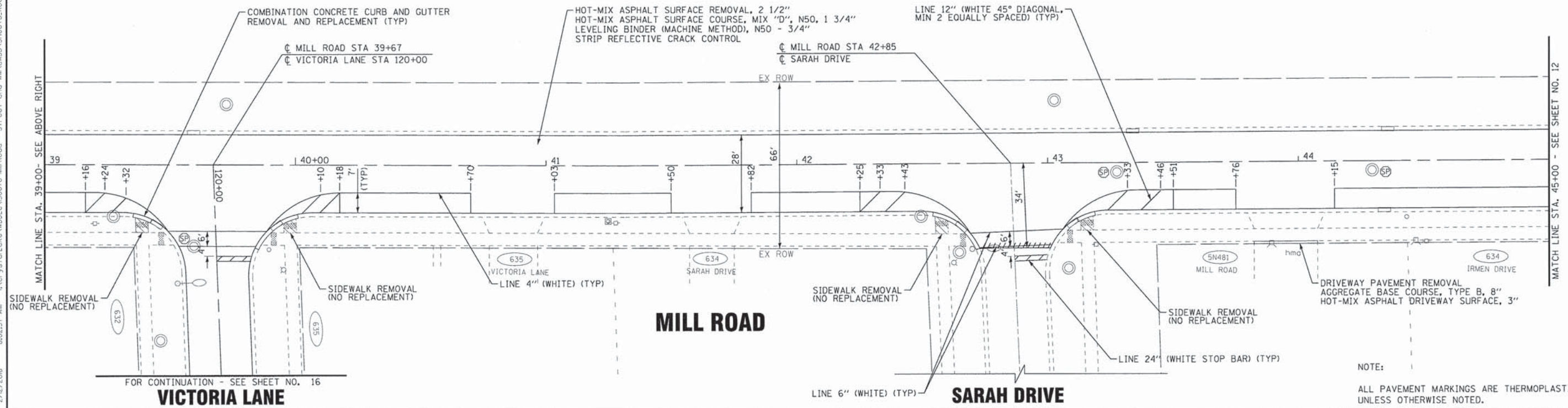
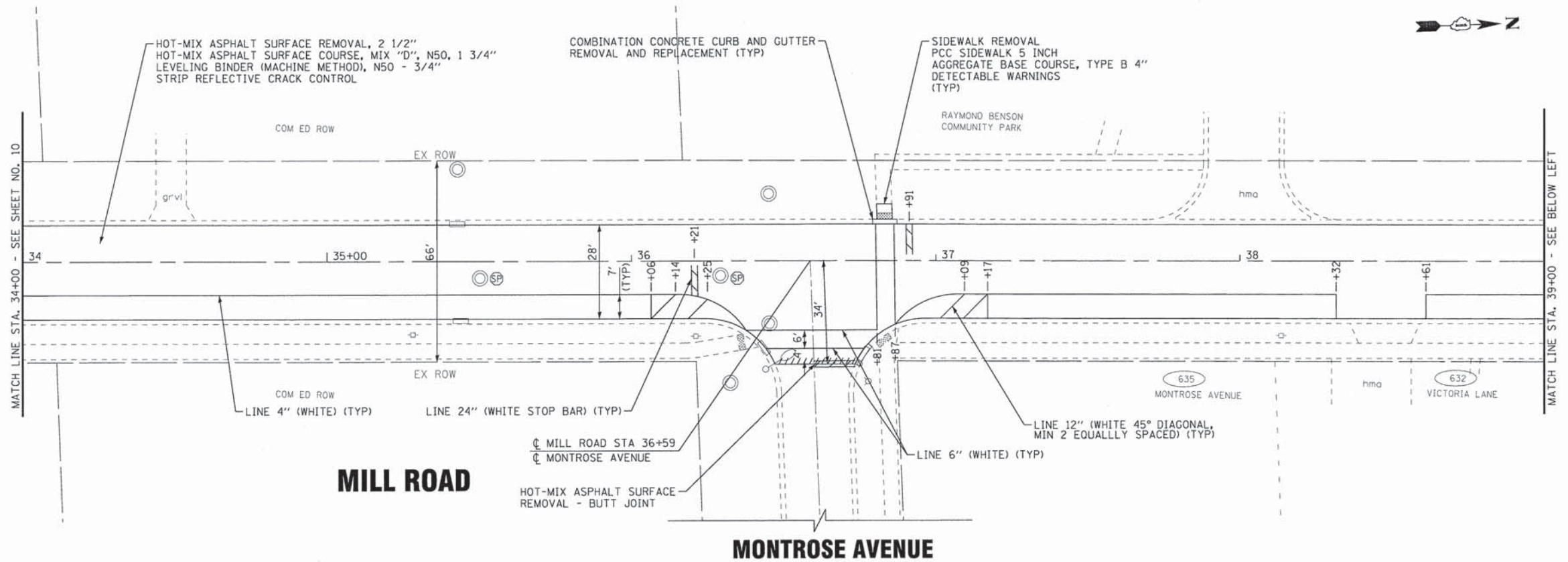
<b>BAXTER &amp; WOODMAN</b> Consulting Engineers	DESIGNED - JDM	REVISED - PER IDOT REVIEW 1-20-16
	DRAWN - KAR	REVISED -
	CHECKED - JJF	REVISED -
	DATE - 01-25-16	FILE - 150676SHT-RD-Plan2.dgn

**STATE OF ILLINOIS  
DEPARTMENT OF TRANSPORTATION**

<b>GEOMETRIC PLAN MILL ROAD</b>	
SCALE: 1" = 20'	STA. 22+00 TO STA. 34+00

F.A.U. RTE.	SECTION	COUNTY	TOTAL SHEETS	SHEET NO.
2625	14-00051-00-RS	DuPAGE	24	10
FED. ROAD DIST. NO.		ILLINOIS FED. AID PROJECT M-4003(303)	CONTRACT NO. 61C61	





COPYRIGHT © 2016, BY BAXTER & WOODMAN, INC.  
 STATE OF ILLINOIS - PROFESSIONAL DESIGN FIRM  
 LICENSE NO. - 184-00121 - EXPIRES 4/30/2017  
 560Kor  
 2/12/2016  
 ...\\plotdr-v\pdtf-bw\_DeFault.plt  
 ...\\plots\150676\_RoadwayPlan.tbl  
 I:\CrystalLake\WDL\150676-Mill Road - Street and W\CAD\Drawings\Roadway\150676SHT-RD-Plan3.dgn

<b>BAXTER &amp; WOODMAN</b> <small>Consulting Engineers</small>	DESIGNED - JDM	REVISED - PER IDOT REVIEW 1-20-16
	DRAWN - KAR	REVISED -
	CHECKED - JJF	REVISED -
	DATE - 01-25-16	FILE - 150676SHT-RD-Plan3.dgn

**STATE OF ILLINOIS  
DEPARTMENT OF TRANSPORTATION**

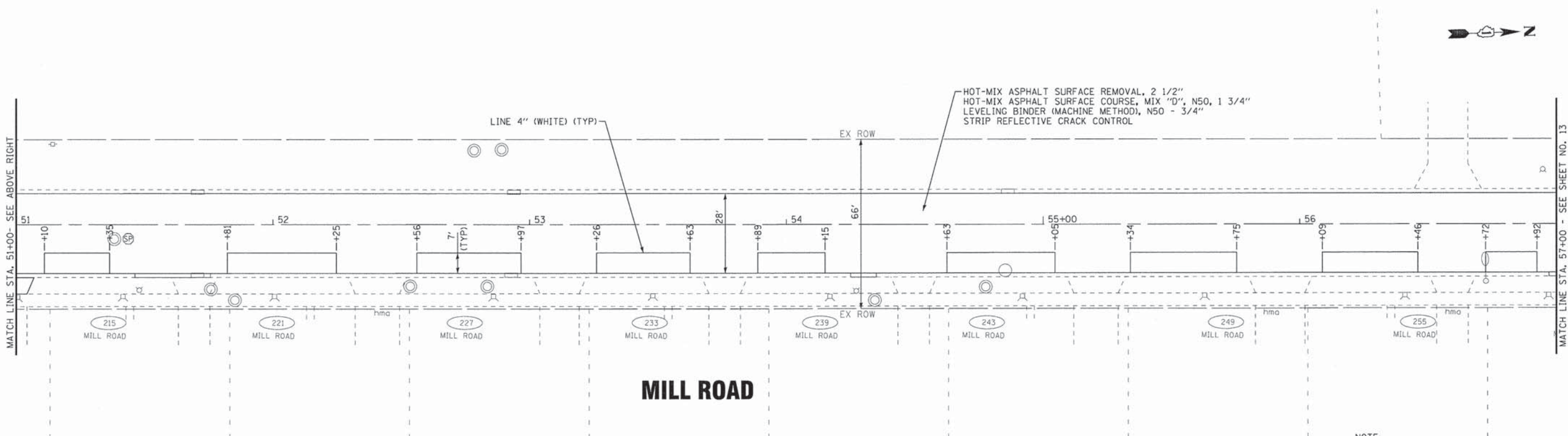
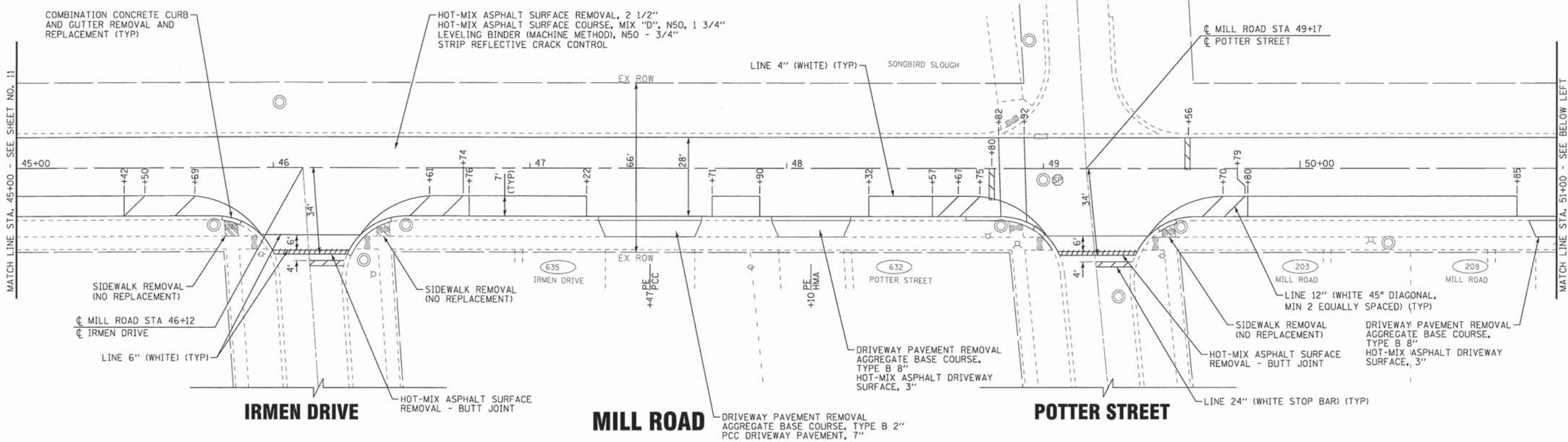
<b>GEOMETRIC PLAN MILL ROAD</b>	
SCALE: 1" = 20'	STA. 34+00 TO STA. 45+00

F.A.U. RTE.	SECTION	COUNTY	TOTAL SHEETS	SHEET NO.
2625	14-00051-00-RS	DuPAGE	24	11
FED. ROAD DIST. NO.		ILLINOIS FED. AID PROJECT M-4003(303)		
		CONTRACT NO. 61C61		

NOTE:  
ALL PAVEMENT MARKINGS ARE THERMOPLASTIC UNLESS OTHERWISE NOTED.



SONGBIRD SLOUGH



NOTE:  
ALL PAVEMENT MARKINGS ARE THERMOPLASTIC UNLESS OTHERWISE NOTED.

COPYRIGHT © 2016 BY BAXTER & WOODMAN, INC.  
 STATE OF ILLINOIS - PROFESSIONAL DESIGN FIRM  
 LICENSE NO. 184-00021 - EXPIRES 4/30/2017  
 2/12/2016  
 ...\\p01-dv-vpof-BW.Default.pdf  
 ...\\p01s\150676\_Roadway\RD-Plan4.dgn  
 ...\\CrystalLake\NDLL\150676-MillRoad - Street and HMA.CADD\Sheets\_Roadway\150676SHT-RD-Plan4.dgn

DESIGNED - JDM	REVISED - PER IDOT REVIEW 1-20-16
DRAWN - KAR	REVISED -
CHECKED - JJF	REVISED -
DATE - 01-25-16	FILE - 150676SHT-RD-Plan4.dgn

STATE OF ILLINOIS  
DEPARTMENT OF TRANSPORTATION

GEOMETRIC PLAN  
MILL ROAD

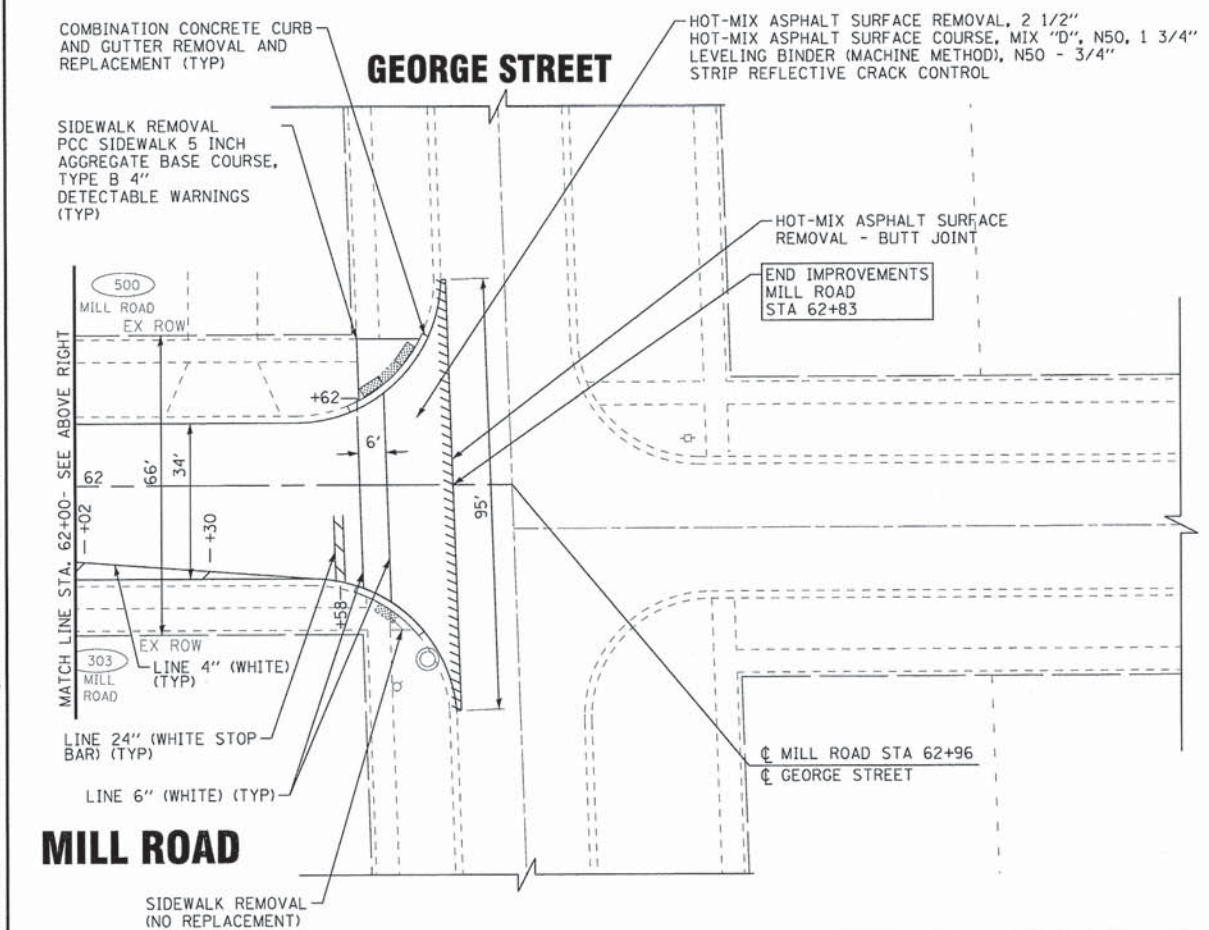
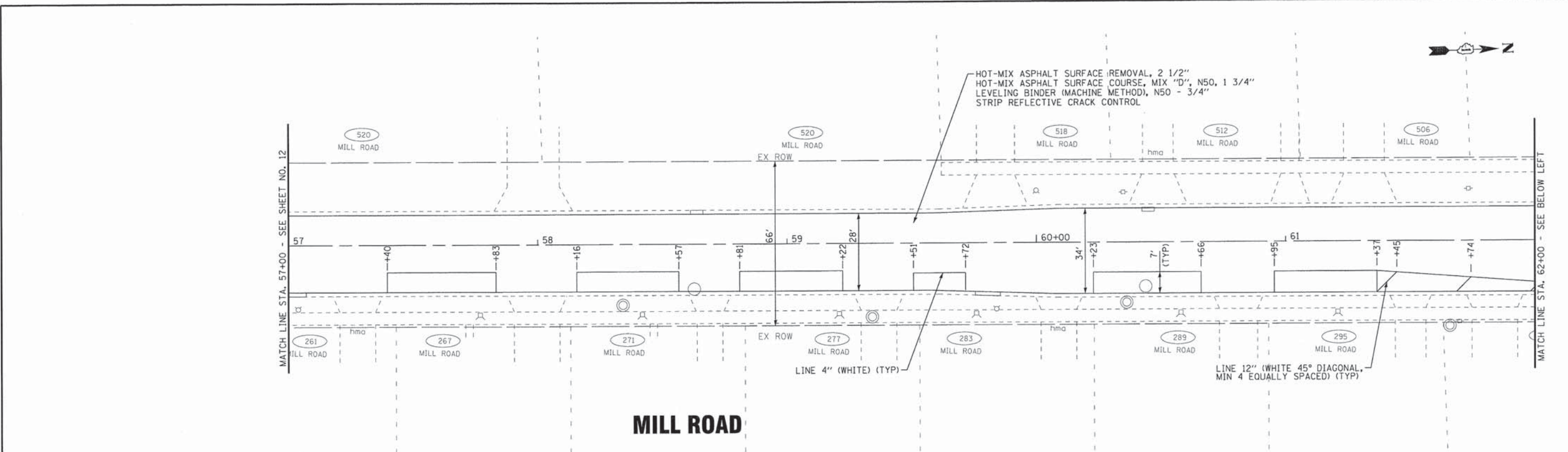
SCALE: 1" = 20'

STA. 45+00 TO STA. 57+00

F.A.U. RTE.	SECTION	COUNTY	TOTAL SHEETS	SHEET NO.
2625	14-00051-00-RS	DuPAGE	24	12
FED. ROAD DIST. NO.			ILLINOIS FED. AID PROJECT W-4003(303)	
CONTRACT NO. 61C61				



COPYRIGHT © 2016, BY BAXTER & WOODMAN, INC.  
 STATE OF ILLINOIS - PROFESSIONAL DESIGN FIRM  
 LICENSE NO. - 384-00021 - EXPIRES 4/30/2020  
 2/12/2016 8:04:53 AM  
 ...\\p01r-v\p01f-BW\_DeFault.plt  
 ...\\p01r\150676\_Roadway\150676SHT-RD-Plan5.dgn  
 ...\\p01r\150676\_Roadway\150676-MillRoad - Street and MillRoad.dwg



<b>BAXTER &amp; WOODMAN</b> Consulting Engineers	DESIGNED - JDM	REVISED - PER IDOT REVIEW 1-20-16
	DRAWN - KAR	REVISED -
	CHECKED - JJF	REVISED -
	DATE - 01-25-16	FILE - 150676SHT-RD-Plan5.dgn

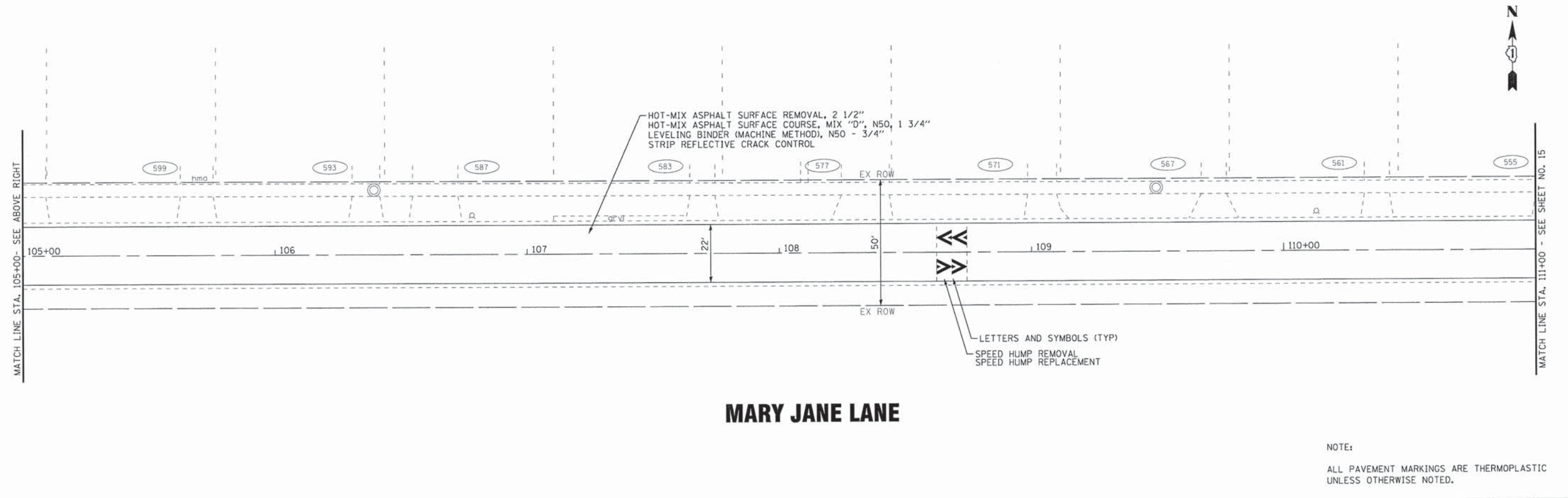
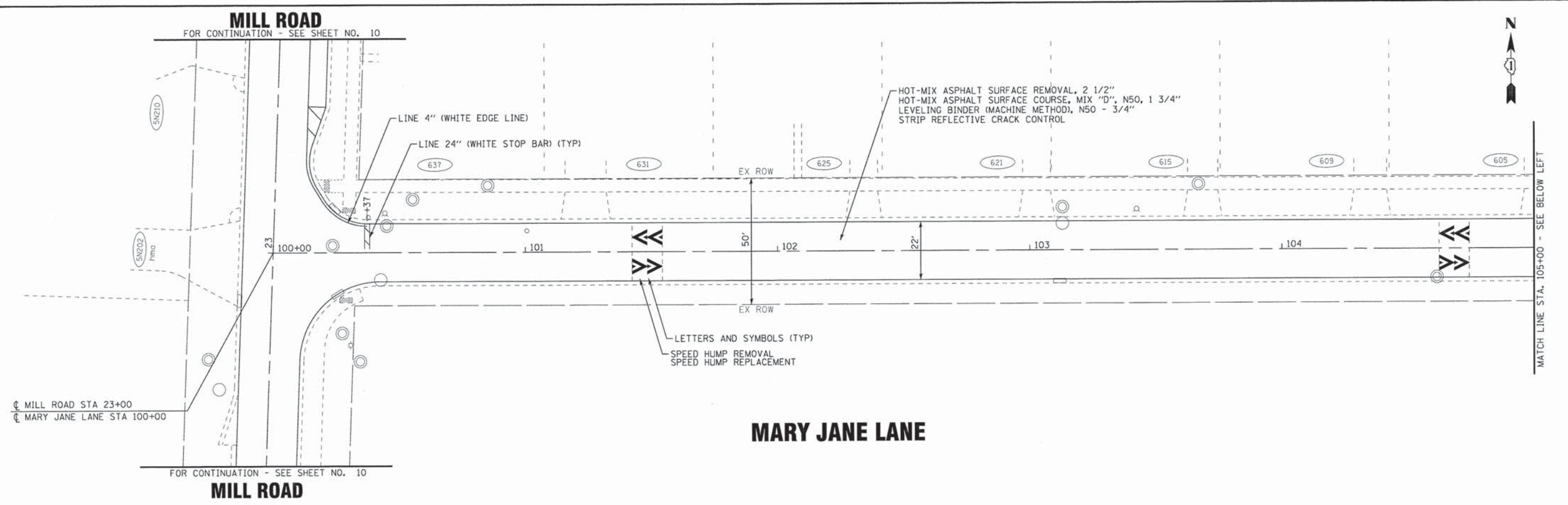
**STATE OF ILLINOIS  
DEPARTMENT OF TRANSPORTATION**

<b>GEOMETRIC PLAN MILL ROAD</b>	
SCALE: 1" = 20'	STA. 57+00 TO STA. 62+96

F.A.U. RTE.	SECTION	COUNTY	TOTAL SHEETS	SHEET NO.
2625	14-00051-00-RS	DuPAGE	24	13
FED. ROAD DIST. NO.		ILLINOIS FED. AID PROJECT M-4003303		

NOTE:  
ALL PAVEMENT MARKINGS ARE THERMOPLASTIC UNLESS OTHERWISE NOTED.





Copyright © 2016, by BAXTER & WOODMAN, INC.,  
STATE OF ILLINOIS - PROFESSIONAL DESIGN FIRM  
LICENSE NO. - 384-001226, EXPIRES 08/31/2018  
2/27/2016 8:03:00 AM

...\\p01dr-v\p01-f\B-W\_Design\150676SHT-RD-Plan6.dgn  
I:\C:\781818\150676SHT-RD-Plan6.dgn  
I:\C:\781818\150676SHT-RD-Plan6.dgn

<b>BAXTER &amp; WOODMAN</b> Consulting Engineers	DESIGNED - JDM	REVISED - PER IDOT REVIEW 1-20-16
	DRAWN - KAR	REVISED -
	CHECKED - JUF	REVISED -
	DATE - 01-25-16	FILE - 150676SHT-RD-Plan6.dgn

**STATE OF ILLINOIS  
DEPARTMENT OF TRANSPORTATION**

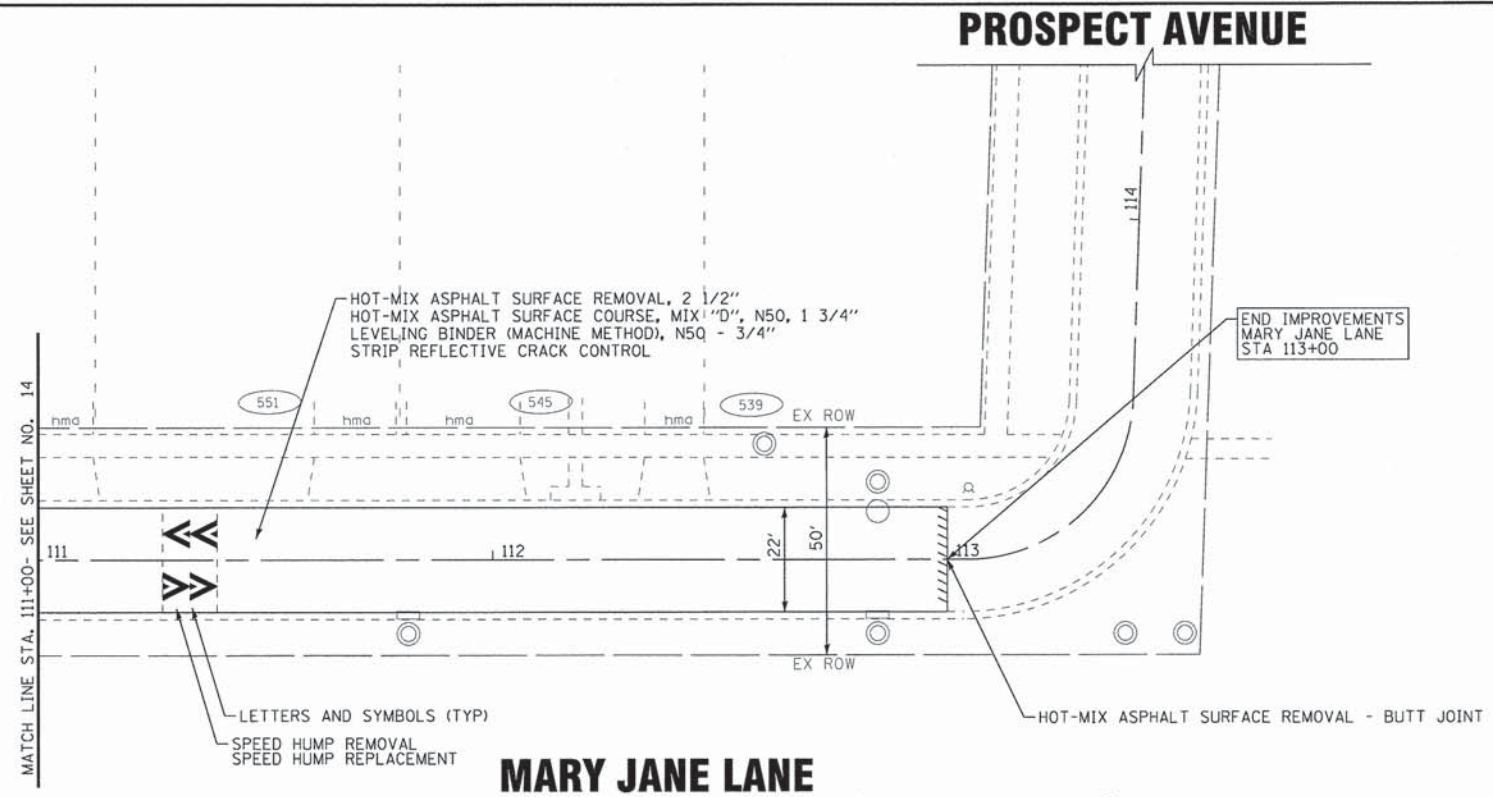
**GEOMETRIC PLAN  
MARY JANE LANE**

SCALE: 1" = 20'  
STA. 100+00 TO STA. 111+00

F.A.U. RTE.	SECTION	COUNTY	TOTAL SHEETS	SHEET NO.
2625	14-00051-00-R5	DuPAGE	24	14
FED. ROAD DIST. NO. ILLINOIS FED. AID PROJECT M-4003303			CONTRACT NO. 61C61	

NOTE:  
ALL PAVEMENT MARKINGS ARE THERMOPLASTIC UNLESS OTHERWISE NOTED.





COPYRIGHT © 2016 BY BAXTER & WOODMAN, INC.  
 STATE OF ILLINOIS PROFESSIONAL ENGINEERING LICENSE NO. 184-00121 - EXPIRES 4/30/2017  
 5603000 2/12/2016 8:03:07 AM  
 I:\Crystal\Iloke\WDDLC\150676-Mill Road - Street and WM\CADD\Sheets\Roadway\150676SHT-RD-Plan7.dgn

<b>BAXTER &amp; WOODMAN</b> <small>Consulting Engineers</small>	DESIGNED - JDM	REVISED - PER IDOT REVIEW 1-20-16
	DRAWN - KAR	REVISED -
	CHECKED - JJF	REVISED -
	DATE - 01-25-16	FILE - 150676SHT-RD-Plan7.dgn

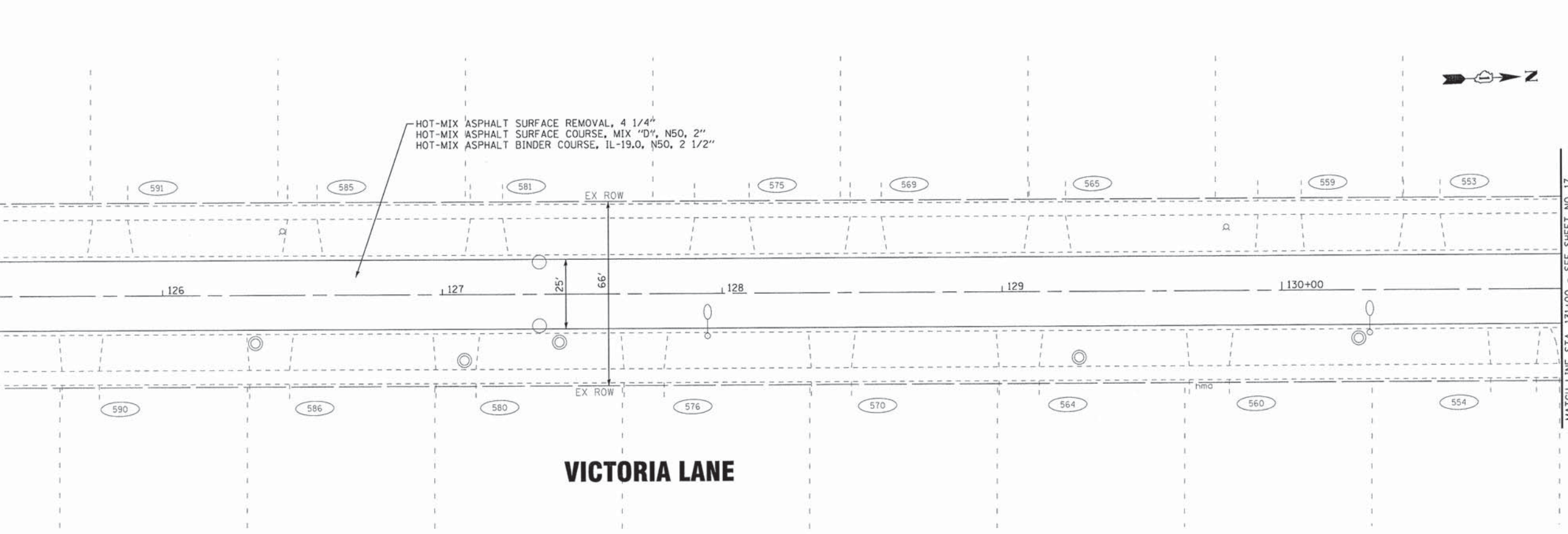
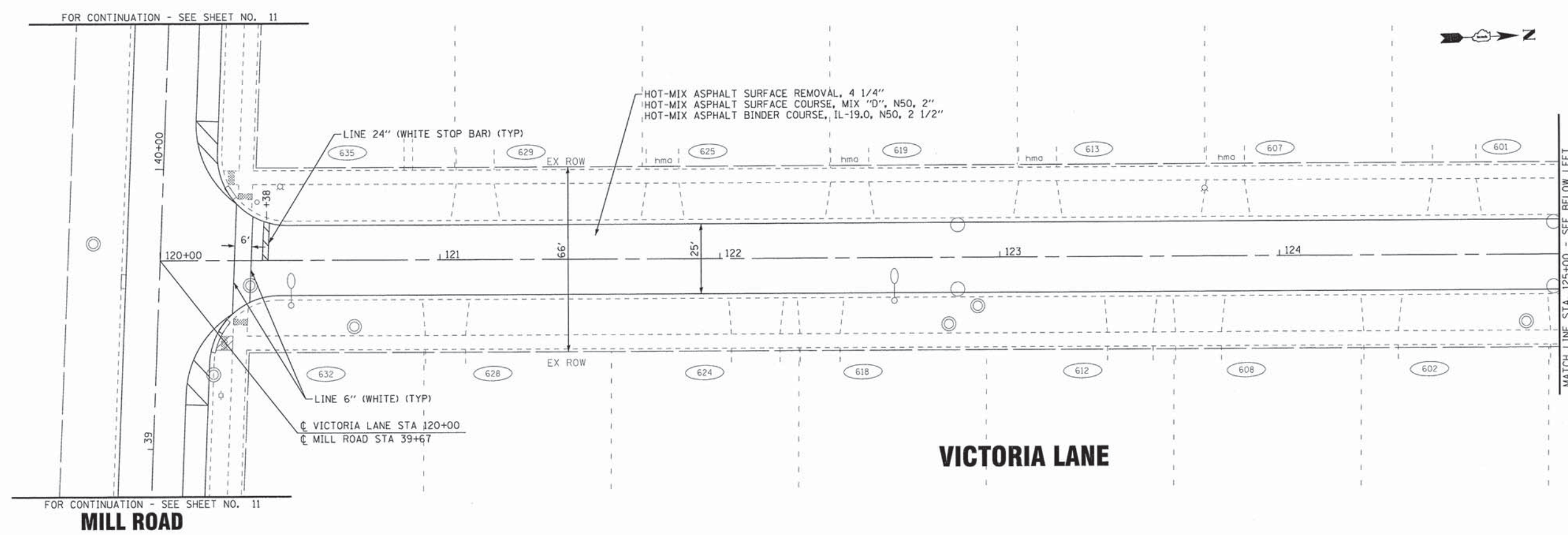
**STATE OF ILLINOIS  
DEPARTMENT OF TRANSPORTATION**

**GEOMETRIC PLAN  
MARY JANE LANE**

SCALE: 1" = 20'      STA. 111+00      TO STA. 114+34

F.A.U. RTE.	SECTION	COUNTY	TOTAL SHEETS	SHEET NO.
2625	14-00051-00-RS	DuPAGE	24	15
FED. ROAD DIST. NO. ILLINOIS FED. AID PROJECT M-40033033			CONTRACT NO. 61C61	





COPYRIGHT © 2016, BY BAXTER & WOODMAN, INC.  
 STATE OF ILLINOIS - ROAD DESIGN DIVISION  
 5600 N. Rte. 180 - Joliet, IL 61781  
 815-741-2100  
 2/22/2016 8:03:07 AM  
 ...\\sfs\cadd\150676\150676-RD-Plan8.dgn  
 ...\\sfs\cadd\150676\150676-RD-Plan8.dgn  
 ...\\sfs\cadd\150676\150676-RD-Plan8.dgn

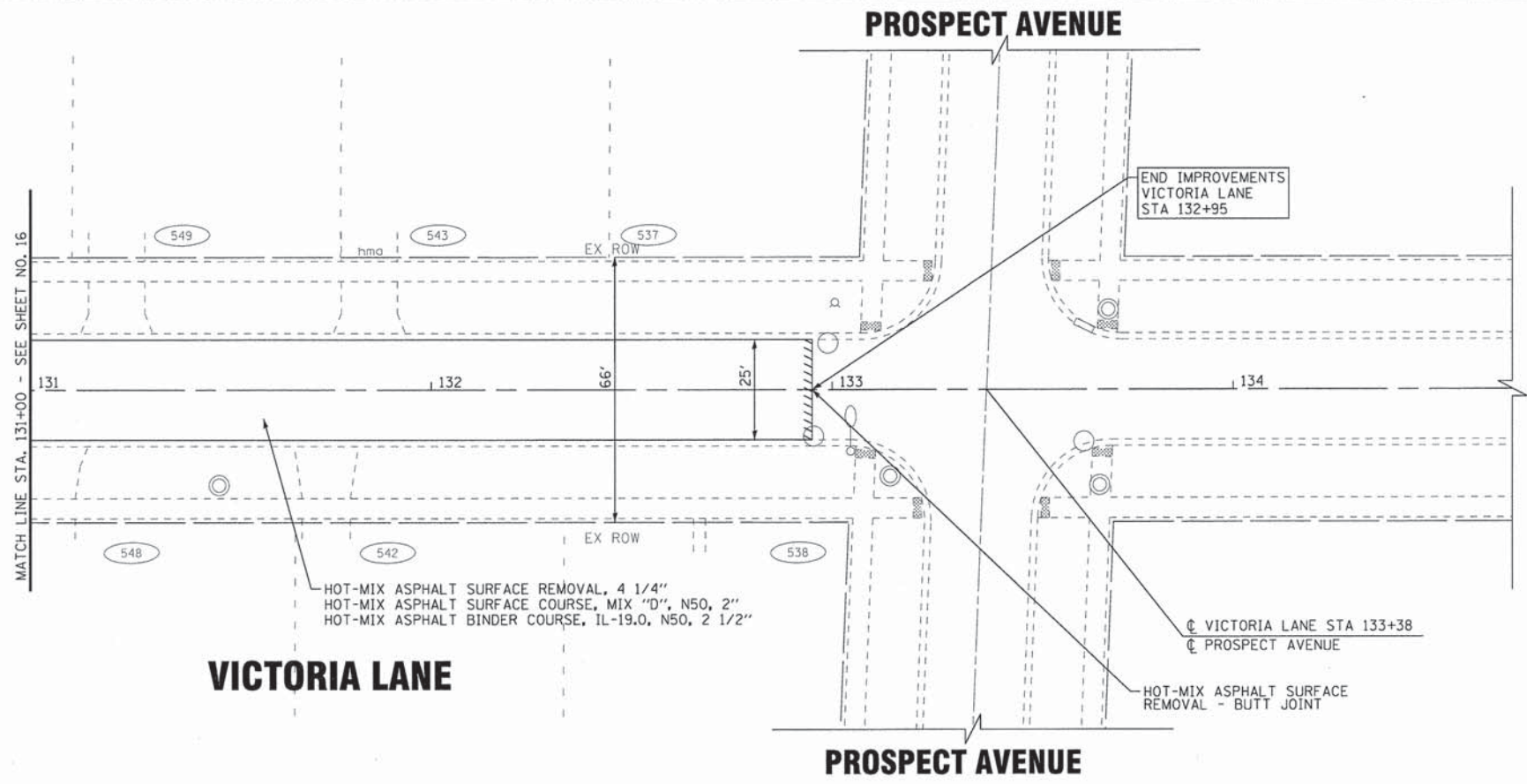
<b>BAXTER &amp; WOODMAN</b> Consulting Engineers	DESIGNED - JDM	REVISED - PER IDOT REVIEW 1-20-16
	DRAWN - KAR	REVISED -
	CHECKED - JJF	REVISED -
	DATE - 01-25-16	FILE - 150676SHT-RD-Plan8.dgn

**STATE OF ILLINOIS**  
**DEPARTMENT OF TRANSPORTATION**

**GEOMETRIC PLAN**  
**VICTORIA LANE**  
 SCALE: 1" = 20'  
 STA. 120+00 TO STA. 131+00

F.A.U. RTE.	SECTION	COUNTY	TOTAL SHEETS	SHEET NO.
2625	14-00051-00-RS	DuPAGE	24	16
FED. ROAD DIST. NO.		ILLINOIS FED. AID PROJECT M-4003(303)		
CONTRACT NO. 61C61				





**VICTORIA LANE**

**PROSPECT AVENUE**

END IMPROVEMENTS  
VICTORIA LANE  
STA 132+95

☉ VICTORIA LANE STA 133+38  
☉ PROSPECT AVENUE

HOT-MIX ASPHALT SURFACE  
REMOVAL - BUTT JOINT

HOT-MIX ASPHALT SURFACE REMOVAL, 4 1/4"  
HOT-MIX ASPHALT SURFACE COURSE, MIX "D", N50, 2"  
HOT-MIX ASPHALT BINDER COURSE, 1L-19.0, N50, 2 1/2"

MATCH LINE STA. 131+00 - SEE SHEET NO. 16

COPYRIGHT © 2016 BY BAXTER & WOODMAN, INC.  
 ALL RIGHTS RESERVED. ILLINOIS PROFESSIONAL ENGINEERING LICENSE NO. 184-00121. EXPIRES 4/30/2017.  
 566K00 2/12/2016 8:03:02 AM  
 ...\\s01dr\work\150676SHT-RD-Plan9.dgn  
 ...\\p1014\150676-Roadway\Pen.tbl  
 I:\CrystalLake\WDL\150676-Mill Road - Street and MW\CA001\Sheets.Roadway\150676SHT-RD-Plan9.dgn



DESIGNED - JDM	REVISED - PER IDOT REVIEW 1-20-16
DRAWN - KAR	REVISED -
CHECKED - JJF	REVISED -
DATE - 01-25-16	FILE - 150676SHT-RD-Plan9.dgn

STATE OF ILLINOIS  
DEPARTMENT OF TRANSPORTATION

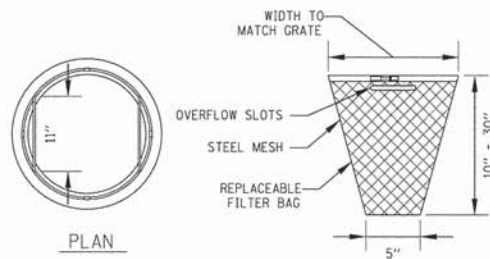
GEOMETRIC PLAN  
VICTORIA LANE

SCALE: 1" = 20'

STA. 131+00 TO STA. 134+70

F.A.U. RTE.	SECTION	COUNTY	TOTAL SHEETS	SHEET NO.
2625	14-00051-00-RS	DUPAGE	24	17
CONTRACT NO. 61C61				
FED. ROAD DIST. NO. ILLINOIS FED. AID PROJECT M-4003(303)				

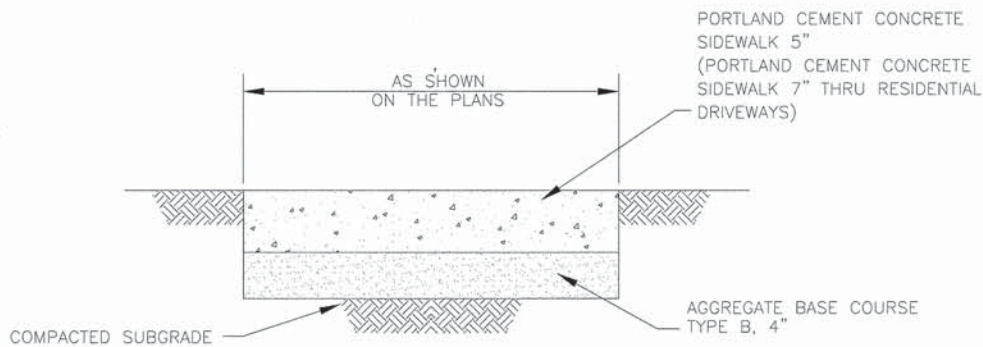




GENERAL NOTES:  
 FRAME: TOP RING CONSTRUCTED FROM 1 1/4" x 1 1/4" x 1/8" ANGLE. BASE RING CONSTRUCTED OF 1 1/2" x 1/2" x 1/8" CHANNEL. HANDLES & SUSPENSION BRACKETS CONSTRUCTED FROM 1/4" x 1 1/4" FLAT. ALL STEEL CONFORMING TO ASTM-A36.  
 REPLACEABLE BAG: CONSTRUCTED FROM 4 OZ./SQ. YD. NON-WOVEN POLYPROPYLENE GEOTEXTILE REINFORCED WITH POLYESTER MESH. CONNECTED TO BASE RING WITH STAINLESS STEEL STRAP & LOCK.

**INLET PROTECTION INLET FILTER**

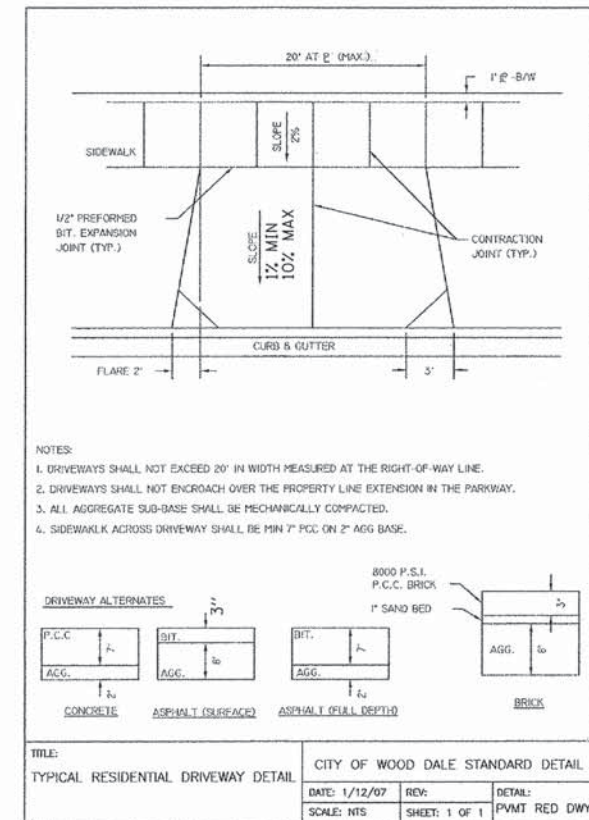
NO SCALE



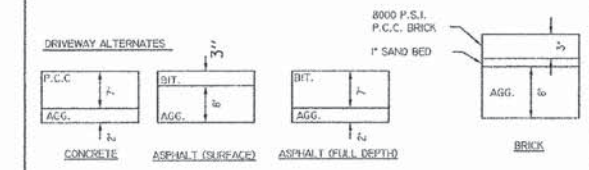
NOTE: PROVIDE FIBER 3/4" EXPANSION JOINTS WHERE NEW SIDEWALK MEETS EXISTING AND AT 50' O.C. MAX. AND PROVIDE CONTROL JOINTS AT 5' O.C.

**PORTLAND CEMENT CONCRETE (P.C.C.) SIDEWALK, 5-INCH**

NO SCALE



NOTES:  
 1. DRIVEWAYS SHALL NOT EXCEED 20' IN WIDTH MEASURED AT THE RIGHT-OF-WAY LINE.  
 2. DRIVEWAYS SHALL NOT ENCR OACH OVER THE PROPERTY LINE EXTENSION IN THE PARKWAY.  
 3. ALL AGGREGATE SUB-BASE SHALL BE MECHANICALLY COMPACTED.  
 4. SIDEWALK ACROSS DRIVEWAY SHALL BE MIN 7" P.C.C. ON 2" AGG. BASE.



TITLE:		CITY OF WOOD DALE STANDARD DETAIL	
TYPICAL RESIDENTIAL DRIVEWAY DETAIL		DATE: 1/12/07	REP: PVM
SCALE: NTS		SHEET: 1 OF 1	DETAIL: PVM RED DWY

COPYRIGHT © 2016 BY BAXTER & WOODMAN, INC.  
 STATE OF ILLINOIS PROFESSIONAL DESIGN FIRM  
 LICENSE NO. - 084-00121 - EXPIRES 4/30/2017  
 560K-cr 2/12/2016  
 ...\\p10ra\50676-Roadway\Pen.tbl  
 ...\\p10ra\50676-Roadway\Pen.tbl  
 I:\Crystal Lake\WDD\150676-Mil Road - Street and W\ACADD\Sheets\_Roadway\150676SHT-RD-MiscDetails.dgn



DESIGNED - JDM	REVISED - PER IDOT REVIEW 1-20-16
DRAWN - KAR	REVISED -
CHECKED - JJF	REVISED -
DATE - 01-25-16	FILE - 150676SHT-RD-MiscDetails.dgn

STATE OF ILLINOIS  
 DEPARTMENT OF TRANSPORTATION

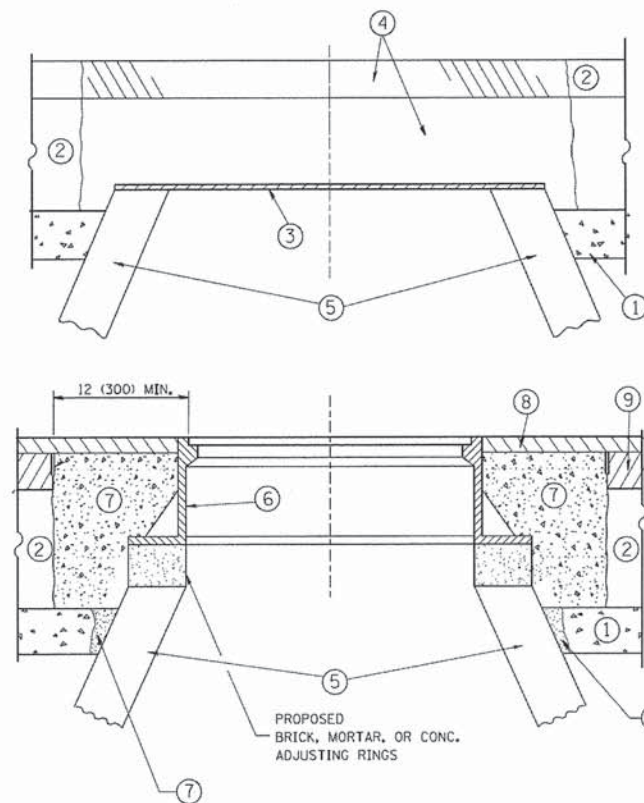
MISCELLANEOUS DETAILS

SCALE: NONE STA. TO STA.

F.A.U. RTE.	SECTION	COUNTY	TOTAL SHEETS	SHEET NO.
2625	14-00051-00-R5	DuPAGE	24	18
FED. ROAD DIST. NO. ILLINOIS FED. AID PROJECT M-4003(303)			CONTRACT NO. 61C61	



COPYRIGHT © 2004 BY BAXTER & WOODMAN, INC.  
 STATE OF ILLINOIS - PROFESSIONAL DESIGN FIRM  
 LICENSE NO. 184-00221 - EXPIRES 7/31/2015  
 2/12/2008 8:03:21 AM  
 \\pcrystal\cme\work\14-00051-RS\RD-DISTRICT ONE DETAILS - BD.dgn  
 \\pcrystal\cme\work\14-00051-RS\RD-DISTRICT ONE DETAILS - BD.dgn



**CONSTRUCTION PROCEDURES**

**STAGE 1 (BEFORE PAVEMENT MILLING)**

- A) REMOVE A MINIMUM OF 12 (300) OF THE PAVEMENT FROM AROUND THE STRUCTURE.
- B) REMOVE THE EXISTING FRAME AND LID FROM THE STRUCTURE.
- C) COVER THE STRUCTURE OPENING WITH A 36 (900) DIAMETER METAL PLATE.
- D) BACKFILL WITH CRUSHED STONE AND A MINIMUM 1/2 (40) THICK HMA SURFACE MIX APPROVED BY THE ENGINEER.

**STAGE 2 (AFTER PAVEMENT MILLING)**

- A) REMOVE THE HMA SURFACE MIX AND CRUSHED STONE.
- B) INSTALL THE FRAME AND LID; ADJUST THE FRAME TO ITS FINAL SURFACE ELEVATION.
- C) THE SURROUNDING SPACE SHALL BE FILLED WITH CLASS PP-1\* CONCRETE TO THE ELEVATION OF THE SURFACE OF THE EXISTING BASE COURSE OR THE BINDER COURSE.

\* UNLESS OTHERWISE SPECIFIED IN THE PLANS.

THE PROCEDURE EXPLAINED ABOVE SHALL CONFORM TO THE APPLICABLE PORTIONS OF SECTIONS 353, 406, 602, AND 603 OF THE STANDARD SPECIFICATIONS EXCEPT THAT "THE CONTRACTOR SHALL ADJUST THE STRUCTURES TO THE FINISHED PAVEMENT ELEVATION NO MORE THAN 5 CALENDAR DAYS PRIOR TO PLACEMENT OF THE FINAL LIFT OF SURFACE UNLESS APPROVED BY THE ENGINEER."

**LEGEND**

- ① SUB-BASE GRANULAR MATERIAL
- ② EXISTING PAVEMENT
- ③ 36 (900) DIAMETER METAL PLATE
- ④ PROPOSED CRUSHED STONE AND HMA SURFACE MIX
- ⑤ EXISTING STRUCTURE
- ⑥ FRAME AND LID (SEE NOTES)
- ⑦ CLASS PP-1\* CONCRETE
- ⑧ PROPOSED HMA SURFACE COURSE
- ⑨ PROPOSED HMA BINDER COURSE

**LOCATION OF STRUCTURES:**

THE CONTRACTOR WILL BE REQUIRED TO KEEP A RECORD OF THE LOCATIONS OF THE BURIED STRUCTURES ACCORDING TO THE STATION AND DISTANCE LEFT OR RIGHT OF THE CENTERLINE OF PAVEMENT. UPON COMPLETION OF THE WORK, THE CONTRACTOR WILL DELIVER THE RECORD TO THE ENGINEER.

**BASIS OF PAYMENT:**

REMOVING FRAMES AND LIDS ON DRAINAGE AND UTILITY STRUCTURES IN THE PAVEMENT PRIOR TO MILLING, AND ADJUSTING TO FINAL GRADE PRIOR TO PLACING THE SURFACE COURSE, WILL BE PAID FOR AT THE CONTRACT UNIT PRICE EACH FOR "FRAMES AND LIDS TO BE ADJUSTED (SPECIAL)."

THIS WORK WILL NOT BE PAID FOR WHEN DRAINAGE AND UTILITY STRUCTURES ARE SPECIFIED FOR PAYMENT AS STRUCTURE RECONSTRUCTION.

NEW FRAMES AND LIDS, WHEN SPECIFIED, WILL BE PAID FOR SEPARATELY.

**NOTES:**

EXISTING BROKEN FRAMES AND LIDS SHALL BE REMOVED AND DISPOSED OF BY THE CONTRACTOR AND SHALL BE REPLACED AS DIRECTED BY THE ENGINEER. REPLACEMENT FRAMES AND LIDS WILL BE PAID FOR IN ACCORDANCE WITH ARTICLE 109.04 OF THE STANDARD SPECIFICATIONS UNLESS A SEPARATE PAY ITEM HAS BEEN PROVIDED.

IF THE EXISTING LIDS ARE OPEN, THE FRAME WILL BE ADJUSTED TO THE ELEVATION OF THE MILLED PAVEMENT SURFACE PRIOR TO THE MILLING OPERATION. THE FRAME WILL NOT BE REMOVED AND COVERED BY THE METAL PLATE.

CITY OF CHICAGO CASTINGS ARE THE PROPERTY OF THE CITY AND THE CONTRACTOR SHALL NOTIFY THE CITY FOR REMOVAL AND DISPOSITION OF THE CASTINGS.

THE METAL PLATE USED TO COVER THE STRUCTURE SHALL REMAIN THE PROPERTY OF THE CONTRACTOR.

WHEN STRUCTURES ARE TO BE ADJUSTED OR RECONSTRUCTED, THE LOWERING AND RAISING OF THE FRAMES AND LIDS WILL NOT BE PAID FOR SEPARATELY BUT WILL BE INCLUDED IN THE COST OF THE CORRESPONDING PAY ITEM.

**DETAILS FOR FRAMES AND LIDS ADJUSTMENT WITH MILLING**

ALL DIMENSIONS ARE IN INCHES (MILLIMETERS) UNLESS OTHERWISE SHOWN

FILE NAME =	USER NAME = bauerdl	DESIGNED - R. SHAH	REVISED - R. WIEDEMAN 05-14-04
cr:\p\work\p1\dot\bauerdl\140108315\bd08.dgn		DRAWN -	REVISED - R. BORO 01-01-07
	PLOT SCALE = 1/8"=1'-0"	CHECKED -	REVISED - R. BORO 03-09-11
	PLOT DATE = 12/6/2011	DATE - 10-25-94	REVISED - R. BORO 12-06-11

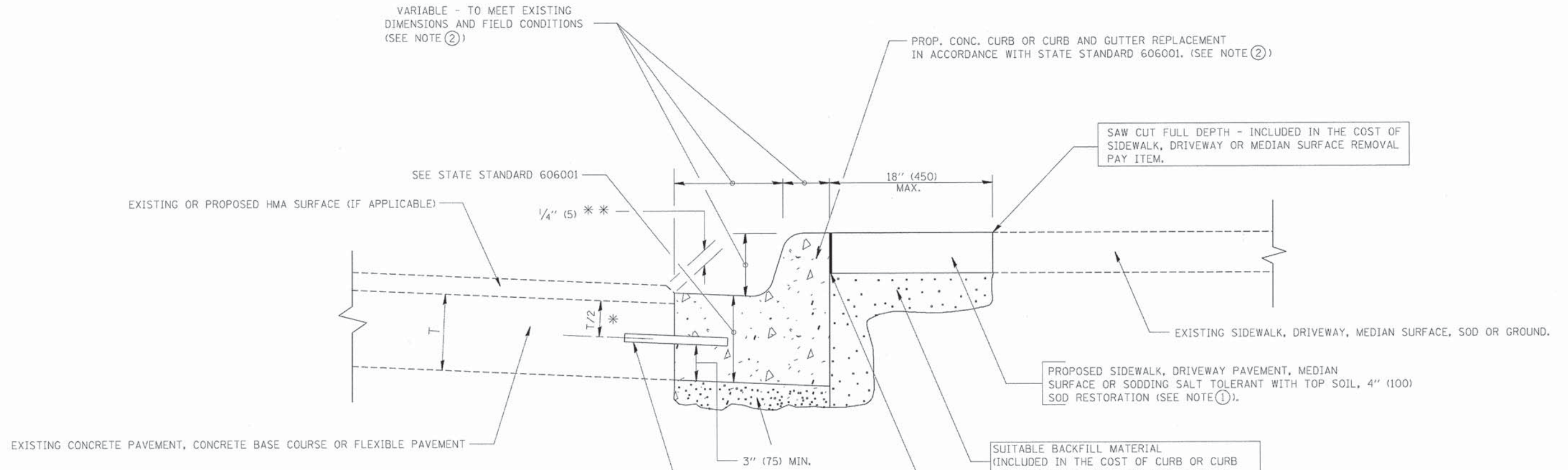
**STATE OF ILLINOIS  
DEPARTMENT OF TRANSPORTATION**

**DETAILS FOR  
FRAMES AND LIDS ADJUSTMENT WITH MILLING**

SCALE: NONE SHEET NO. 1 OF 1 SHEETS STA. TO STA.

F.A. RTE.	SECTION	COUNTY	TOTAL SHEETS	SHEET NO.
2625	14-00051-00-RS	DuPAGE	24	19
BD600-03 (BD-8)			CONTRACT NO. 61C61	
FED. ROAD DIST. NO. 1 ILLINOIS FED. AID PROJECT M-4003(303)				





\* 3" (75) MINIMUM FROM TOP AND BOTTOM OF THE CONCRETE PAVEMENT OR BASE COURSE.

\*\* IF THE FINAL SURFACE OF THE PAVEMENT IS CONCRETE, THE GUTTER IS TO BE FLUSH WITH THE PAVEMENT.

NOTE: ① SIDEWALK, DRIVEWAY PAVEMENT OR MEDIAN SURFACE SHALL BE SIMILAR TO THE MATERIAL BEING REMOVED AND WILL BE PAID FOR SEPARATELY.  
SODDING, SALT TOLERANT AND TOP SOIL, FURNISH AND PLACE 4" WILL BE PAID FOR SEPARATELY,

② FERTILIZER FOR THE PLACEMENT OF THE SOD IS NOT REQUIRED

③ CURB OR CURB AND GUTTER REPLACEMENT SHALL MATCH THE SHAPE OF THE EXISTING CURB OR CURB AND GUTTER UNLESS OTHERWISE SPECIFIED.

④ FOR CURB OR CURB AND GUTTER REMOVAL AND REPLACEMENT ADJACENT TO FLEXIBLE PAVEMENT DELETE EPOXY COATED TIE BARS.

⑤ LONGITUDINAL BARS, IF ENCOUNTERED IN THE EXISTING CURB OR CURB AND GUTTER, ARE NOT TO BE REPLACED. CUTTING AND REMOVING LONGITUDINAL BARS SHALL BE INCLUDED IN THE COST OF CURB OR CURB AND GUTTER REMOVAL AND REPLACEMENT.

⑥ THE COST OF HMA SURFACE REMOVAL IN THE EXISTING GUTTER FLAG SHALL BE INCLUDED IN THE COST OF THE CURB AND GUTTER REMOVAL AND REPLACEMENT.

⑦ THE REMOVAL AND REPLACEMENT OF THE EXISTING CURB OR CURB AND GUTTER SHALL BE DONE IN ACCORDANCE WITH THE APPLICABLE PORTIONS OF SECTION 440 AND 606 OF THE STANDARD SPECIFICATIONS.

⑧ THE LOCATIONS OF REMOVAL AND REPLACEMENT OF EXISTING CURB OR CURB AND GUTTER SHALL BE DETERMINED BY THE RESIDENT ENGINEER AT THE TIME OF CONSTRUCTION.

## CURB OR CURB AND GUTTER REMOVAL AND REPLACEMENT

ALL DIMENSIONS ARE IN INCHES (MILLIMETERS) UNLESS OTHERWISE SHOWN.

COPYRIGHT © 2014 BY BAXTER & WOODMAN, INC.  
 STATE OF ILLINOIS - PROFESSIONAL DESIGN FIRM  
 LICENSE NO. 184-00025 - EXPIRES 6/30/2025  
 2009 P  
 c:\p\work\p\sidot\drivokasn\2108315\bc24.dgn  
 12/16/2009 8:58:41 AM

FILE NAME =	USER NAME = drivokasn	DESIGNED - A. HOUSEH	REVISED - R. SHAH 10-03-96
		DRAWN -	REVISED - A. ABBAS 03-21-97
	PLOT SCALE = 50.000' / IN.	CHECKED -	REVISED - M. GOMEZ 01-22-01
	PLOT DATE = 12/16/2009	DATE - 03-11-94	REVISED - R. BORO 12-15-09

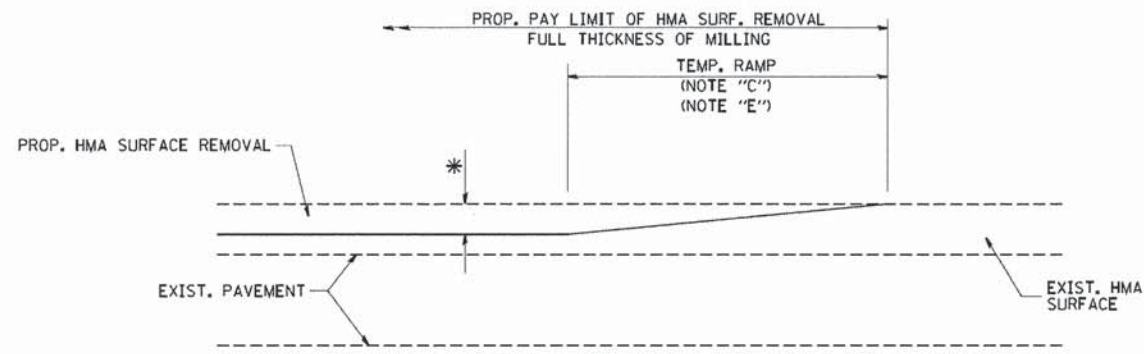
STATE OF ILLINOIS  
DEPARTMENT OF TRANSPORTATION

CURB OR CURB AND GUTTER  
REMOVAL AND REPLACEMENT

SCALE: NONE SHEET NO. 1 OF 1 SHEETS STA. TO STA.

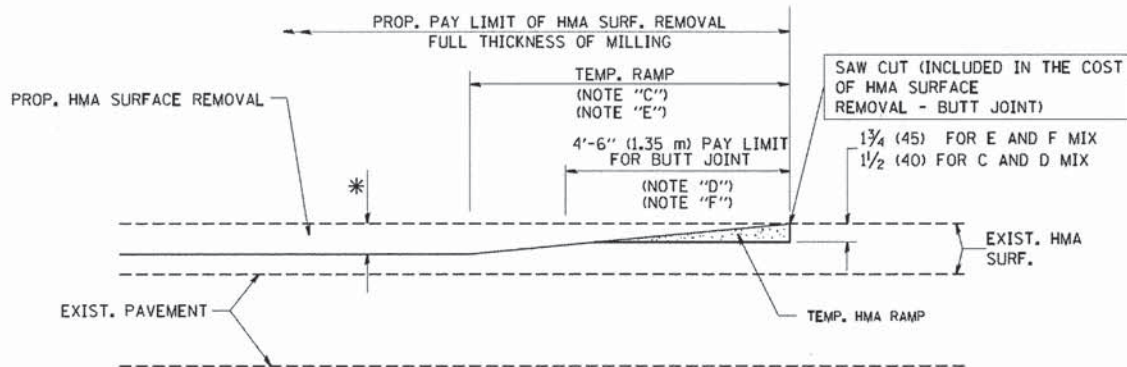
F.A. RTE.	SECTION	COUNTY	TOTAL SHEETS	SHEET NO.
2625	14-00051-00-RS	DUPAGE	24	20
BD600-06 (BD-24)			CONTRACT NO. 61C61	
FED. ROAD DIST. NO. 1 ILLINOIS FED. AID PROJECT M-4003(303)				





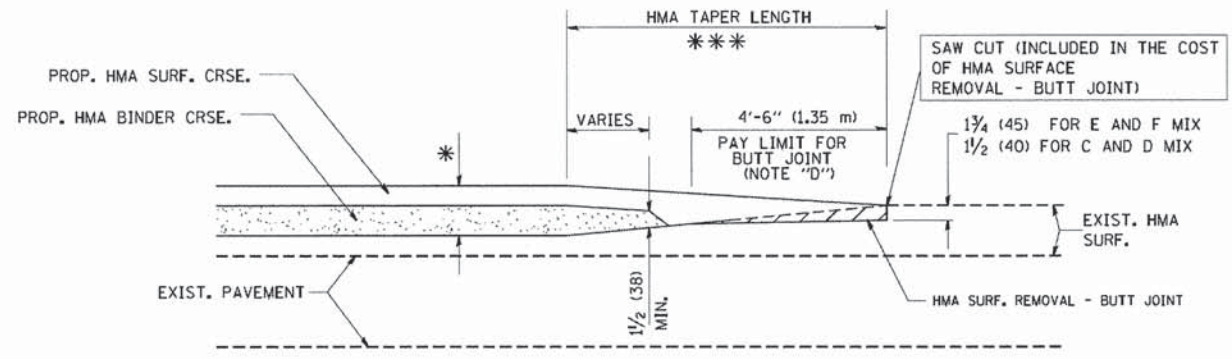
MILLED TEMPORARY RAMP  
(FOR BUTT JOINT AND HMA TAPER SEE DETAIL BELOW)

**OPTION 1**



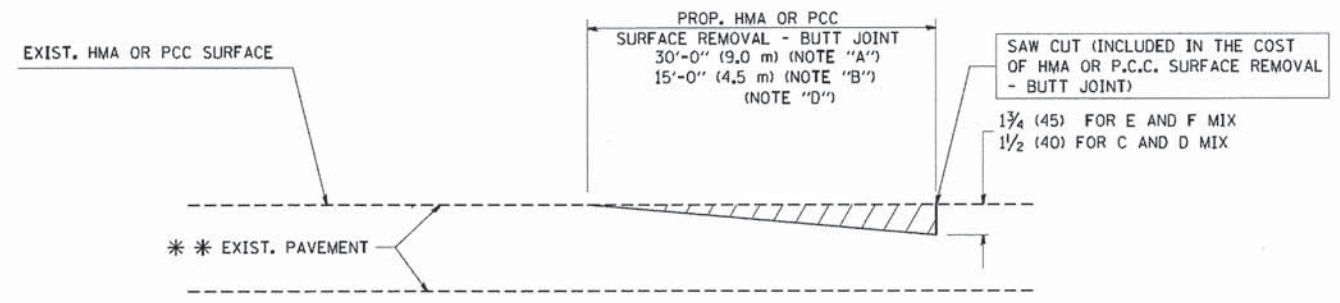
HMA CONSTRUCTED TEMPORARY RAMP  
(FOR BUTT JOINT AND HMA TAPER SEE DETAIL BELOW)

**OPTION 2**  
**TYPICAL TEMPORARY RAMP**

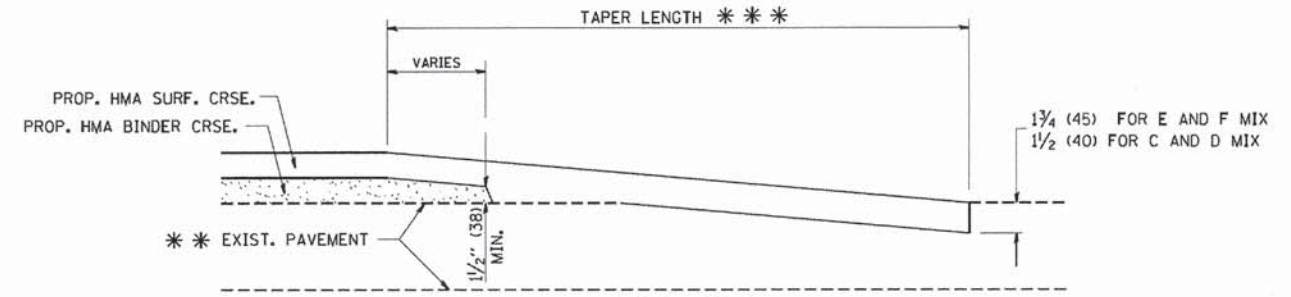


BUTT JOINT AND HMA TAPER

**TYPICAL BUTT JOINT AND HMA TAPER FOR MILLING AND RESURFACING**



BUTT JOINT DETAIL



HMA TAPER DETAIL

**TYPICAL BUTT JOINT AND HMA TAPER FOR RESURFACING ONLY**

\*\*\* PC CONCRETE, HMA OR HMA RESURFACED PAVEMENT.

**NOTES**

- A: MAINLINE ROADWAYS AND MAJOR SIDE ROADS.
  - B: MINOR SIDE ROADS.
  - C: THE TEMP. RAMP SHALL BE CONSTRUCTED IMMEDIATELY UPON REMOVAL OF THE EXISTING HMA SURFACE.
  - D: THE BUTT JOINT SHALL BE CONSTRUCTED IMMEDIATELY PRIOR TO PLACING THE PROPOSED HMA COURSES.
  - E: TAPER THE TEMP. RAMP AT A RATE OF 3'-0" (900 mm) PER 1 INCH (25 mm) OF MILLING THICKNESS.
  - F: INSTALLATION AND REMOVAL OF THE 4'-6" (1.35 m) TEMP. RAMP IS INCLUDED IN COST OF HMA SURFACE REMOVAL - BUTT JOINT
  - G: SEE ARTICLE 406.08 AND 406.14 OF THE STANDARD SPECIFICATIONS FOR "HMA AND/OR PCC SURFACE REMOVAL, BUTT JOINT".
- \* SEE TYPICAL SECTIONS FOR MILLING THICKNESS.
- \*\*\* 20'-0" (6.1 m) PER 1 (25) RESURFACING (NOTE "A")  
10'-0" (3.0 m) PER 1 (25) RESURFACING (NOTE "B")

**BASIS OF PAYMENT:**

THE BUTT JOINT WILL BE PAID FOR AT THE CONTRACT UNIT PRICE PER SQUARE YARD (SQUARE METER) FOR "HOT-MIX ASPHALT SURFACE REMOVAL - BUTT JOINT" OR FOR "PORTLAND CEMENT CONCRETE SURFACE REMOVAL - BUTT JOINT".

ALL DIMENSIONS ARE IN INCHES (MILLIMETERS) UNLESS OTHERWISE SHOWN.

COPYRIGHT © 2004 BY BAXTER & WOODMAN, INC.  
 STATE OF ILLINOIS - PROFESSIONAL DESIGN FIRM  
 1500 N. WASHINGTON ST., SUITE 200, CHICAGO, IL 60610  
 312.467.1000 FAX 312.467.1001  
 PROJECT: I-55/US-41/US-124/US-150/US-156/US-157/US-158/US-159/US-160/US-161/US-162/US-163/US-164/US-165/US-166/US-167/US-168/US-169/US-170/US-171/US-172/US-173/US-174/US-175/US-176/US-177/US-178/US-179/US-180/US-181/US-182/US-183/US-184/US-185/US-186/US-187/US-188/US-189/US-190/US-191/US-192/US-193/US-194/US-195/US-196/US-197/US-198/US-199/US-200/US-201/US-202/US-203/US-204/US-205/US-206/US-207/US-208/US-209/US-210/US-211/US-212/US-213/US-214/US-215/US-216/US-217/US-218/US-219/US-220/US-221/US-222/US-223/US-224/US-225/US-226/US-227/US-228/US-229/US-230/US-231/US-232/US-233/US-234/US-235/US-236/US-237/US-238/US-239/US-240/US-241/US-242/US-243/US-244/US-245/US-246/US-247/US-248/US-249/US-250/US-251/US-252/US-253/US-254/US-255/US-256/US-257/US-258/US-259/US-260/US-261/US-262/US-263/US-264/US-265/US-266/US-267/US-268/US-269/US-270/US-271/US-272/US-273/US-274/US-275/US-276/US-277/US-278/US-279/US-280/US-281/US-282/US-283/US-284/US-285/US-286/US-287/US-288/US-289/US-290/US-291/US-292/US-293/US-294/US-295/US-296/US-297/US-298/US-299/US-300/US-301/US-302/US-303/US-304/US-305/US-306/US-307/US-308/US-309/US-310/US-311/US-312/US-313/US-314/US-315/US-316/US-317/US-318/US-319/US-320/US-321/US-322/US-323/US-324/US-325/US-326/US-327/US-328/US-329/US-330/US-331/US-332/US-333/US-334/US-335/US-336/US-337/US-338/US-339/US-340/US-341/US-342/US-343/US-344/US-345/US-346/US-347/US-348/US-349/US-350/US-351/US-352/US-353/US-354/US-355/US-356/US-357/US-358/US-359/US-360/US-361/US-362/US-363/US-364/US-365/US-366/US-367/US-368/US-369/US-370/US-371/US-372/US-373/US-374/US-375/US-376/US-377/US-378/US-379/US-380/US-381/US-382/US-383/US-384/US-385/US-386/US-387/US-388/US-389/US-390/US-391/US-392/US-393/US-394/US-395/US-396/US-397/US-398/US-399/US-400/US-401/US-402/US-403/US-404/US-405/US-406/US-407/US-408/US-409/US-410/US-411/US-412/US-413/US-414/US-415/US-416/US-417/US-418/US-419/US-420/US-421/US-422/US-423/US-424/US-425/US-426/US-427/US-428/US-429/US-430/US-431/US-432/US-433/US-434/US-435/US-436/US-437/US-438/US-439/US-440/US-441/US-442/US-443/US-444/US-445/US-446/US-447/US-448/US-449/US-450/US-451/US-452/US-453/US-454/US-455/US-456/US-457/US-458/US-459/US-460/US-461/US-462/US-463/US-464/US-465/US-466/US-467/US-468/US-469/US-470/US-471/US-472/US-473/US-474/US-475/US-476/US-477/US-478/US-479/US-480/US-481/US-482/US-483/US-484/US-485/US-486/US-487/US-488/US-489/US-490/US-491/US-492/US-493/US-494/US-495/US-496/US-497/US-498/US-499/US-500/US-501/US-502/US-503/US-504/US-505/US-506/US-507/US-508/US-509/US-510/US-511/US-512/US-513/US-514/US-515/US-516/US-517/US-518/US-519/US-520/US-521/US-522/US-523/US-524/US-525/US-526/US-527/US-528/US-529/US-530/US-531/US-532/US-533/US-534/US-535/US-536/US-537/US-538/US-539/US-540/US-541/US-542/US-543/US-544/US-545/US-546/US-547/US-548/US-549/US-550/US-551/US-552/US-553/US-554/US-555/US-556/US-557/US-558/US-559/US-560/US-561/US-562/US-563/US-564/US-565/US-566/US-567/US-568/US-569/US-570/US-571/US-572/US-573/US-574/US-575/US-576/US-577/US-578/US-579/US-580/US-581/US-582/US-583/US-584/US-585/US-586/US-587/US-588/US-589/US-590/US-591/US-592/US-593/US-594/US-595/US-596/US-597/US-598/US-599/US-600/US-601/US-602/US-603/US-604/US-605/US-606/US-607/US-608/US-609/US-610/US-611/US-612/US-613/US-614/US-615/US-616/US-617/US-618/US-619/US-620/US-621/US-622/US-623/US-624/US-625/US-626/US-627/US-628/US-629/US-630/US-631/US-632/US-633/US-634/US-635/US-636/US-637/US-638/US-639/US-640/US-641/US-642/US-643/US-644/US-645/US-646/US-647/US-648/US-649/US-650/US-651/US-652/US-653/US-654/US-655/US-656/US-657/US-658/US-659/US-660/US-661/US-662/US-663/US-664/US-665/US-666/US-667/US-668/US-669/US-670/US-671/US-672/US-673/US-674/US-675/US-676/US-677/US-678/US-679/US-680/US-681/US-682/US-683/US-684/US-685/US-686/US-687/US-688/US-689/US-690/US-691/US-692/US-693/US-694/US-695/US-696/US-697/US-698/US-699/US-700/US-701/US-702/US-703/US-704/US-705/US-706/US-707/US-708/US-709/US-710/US-711/US-712/US-713/US-714/US-715/US-716/US-717/US-718/US-719/US-720/US-721/US-722/US-723/US-724/US-725/US-726/US-727/US-728/US-729/US-730/US-731/US-732/US-733/US-734/US-735/US-736/US-737/US-738/US-739/US-740/US-741/US-742/US-743/US-744/US-745/US-746/US-747/US-748/US-749/US-750/US-751/US-752/US-753/US-754/US-755/US-756/US-757/US-758/US-759/US-760/US-761/US-762/US-763/US-764/US-765/US-766/US-767/US-768/US-769/US-770/US-771/US-772/US-773/US-774/US-775/US-776/US-777/US-778/US-779/US-780/US-781/US-782/US-783/US-784/US-785/US-786/US-787/US-788/US-789/US-790/US-791/US-792/US-793/US-794/US-795/US-796/US-797/US-798/US-799/US-800/US-801/US-802/US-803/US-804/US-805/US-806/US-807/US-808/US-809/US-810/US-811/US-812/US-813/US-814/US-815/US-816/US-817/US-818/US-819/US-820/US-821/US-822/US-823/US-824/US-825/US-826/US-827/US-828/US-829/US-830/US-831/US-832/US-833/US-834/US-835/US-836/US-837/US-838/US-839/US-840/US-841/US-842/US-843/US-844/US-845/US-846/US-847/US-848/US-849/US-850/US-851/US-852/US-853/US-854/US-855/US-856/US-857/US-858/US-859/US-860/US-861/US-862/US-863/US-864/US-865/US-866/US-867/US-868/US-869/US-870/US-871/US-872/US-873/US-874/US-875/US-876/US-877/US-878/US-879/US-880/US-881/US-882/US-883/US-884/US-885/US-886/US-887/US-888/US-889/US-890/US-891/US-892/US-893/US-894/US-895/US-896/US-897/US-898/US-899/US-900/US-901/US-902/US-903/US-904/US-905/US-906/US-907/US-908/US-909/US-910/US-911/US-912/US-913/US-914/US-915/US-916/US-917/US-918/US-919/US-920/US-921/US-922/US-923/US-924/US-925/US-926/US-927/US-928/US-929/US-930/US-931/US-932/US-933/US-934/US-935/US-936/US-937/US-938/US-939/US-940/US-941/US-942/US-943/US-944/US-945/US-946/US-947/US-948/US-949/US-950/US-951/US-952/US-953/US-954/US-955/US-956/US-957/US-958/US-959/US-960/US-961/US-962/US-963/US-964/US-965/US-966/US-967/US-968/US-969/US-970/US-971/US-972/US-973/US-974/US-975/US-976/US-977/US-978/US-979/US-980/US-981/US-982/US-983/US-984/US-985/US-986/US-987/US-988/US-989/US-990/US-991/US-992/US-993/US-994/US-995/US-996/US-997/US-998/US-999/US-1000

FILE NAME = W:\diststa\22v34\ba32.dgn	USER NAME = gaglianob	DESIGNED - M. DE YONG	REVISED - R. SHAH 10-25-94
		DRAWN -	REVISED - A. ABBAS 03-21-97
		CHECKED -	REVISED - M. GOMEZ 04-06-01
		DATE - 06-13-90	REVISED - R. BORO 01-01-07

**STATE OF ILLINOIS  
DEPARTMENT OF TRANSPORTATION**

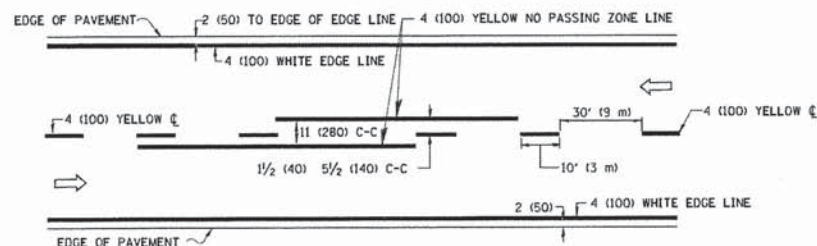
<b>BUTT JOINT AND HMA TAPER DETAILS</b>			
SCALE: NONE	SHEET NO. 1 OF 1 SHEETS	STA.	TO STA.

F.A. RTE.	SECTION	COUNTY	TOTAL SHEETS	SHEET NO.
2625	14-00051-00-RS	DUPAGE	24	21
<b>BD400-05 BD32</b>			<b>CONTRACT NO. 61C61</b>	
FED. ROAD DIST. NO. 1   ILLINOIS   FED. AID PROJECT M-4003(303)				

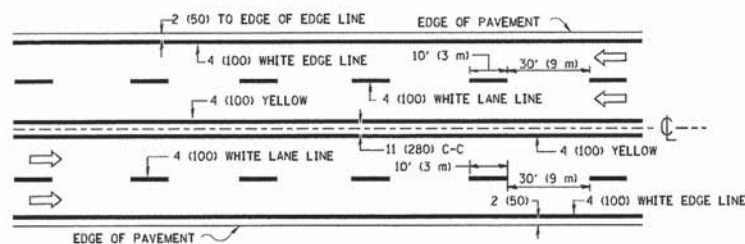




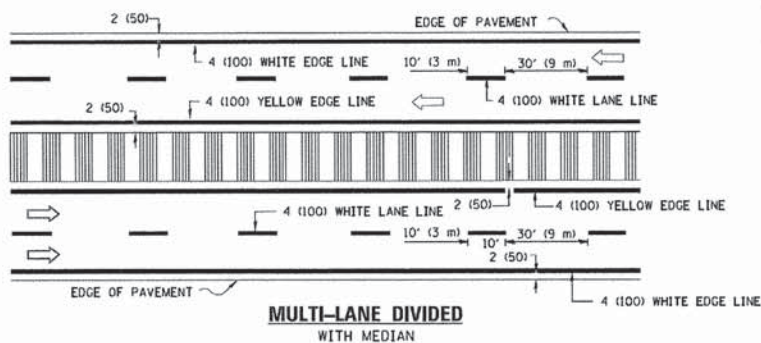




**2-LANE ROADWAY**

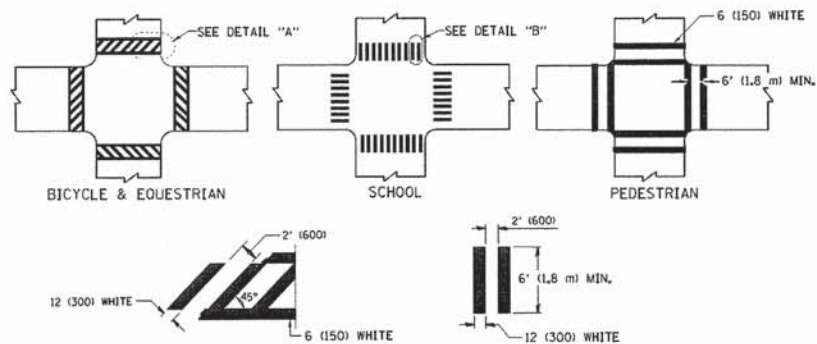


**MULTI-LANE UNDIVIDED**



**MULTI-LANE DIVIDED WITH MEDIAN**

**TYPICAL LANE AND EDGE LINE MARKING**

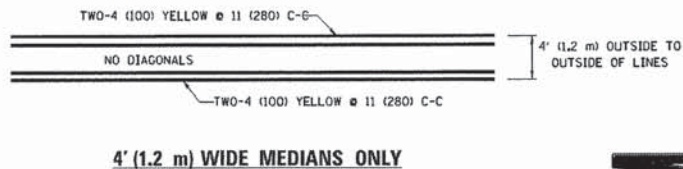


**DETAIL "A"**

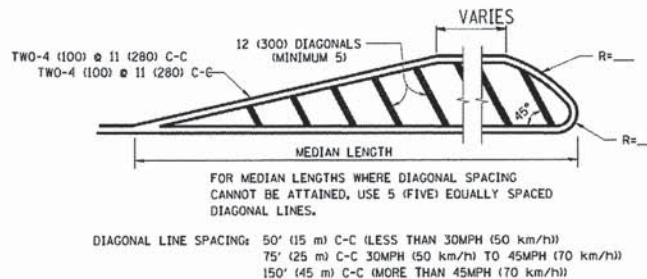
**DETAIL "B"**

**TYPICAL CROSSWALK MARKING**

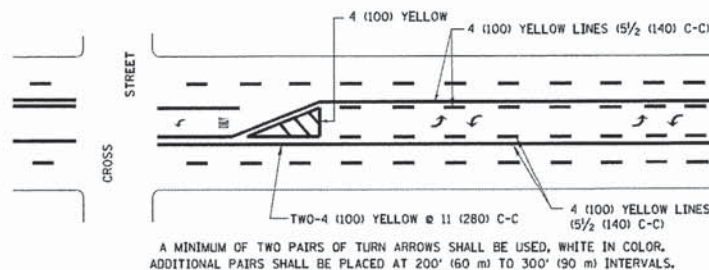
\* MARKINGS SHALL BE INSTALLED PARALLEL TO THE CENTERLINE OF THE ROAD WHICH IT CROSSES



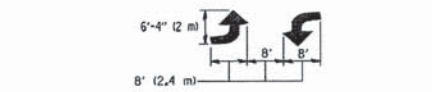
**4' (1.2 m) WIDE MEDIANS ONLY**



**MEDIANS OVER 4' (1.2 m) WIDE**



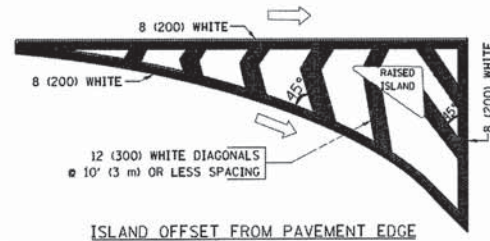
**MEDIAN WITH TWO-WAY LEFT TURN LANE  
TYPICAL PAINTED MEDIAN MARKING**



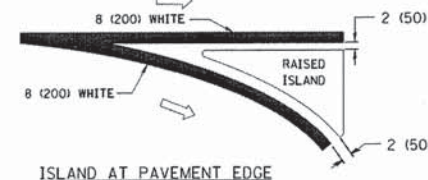
**TYPICAL LEFT (OR RIGHT) TURN LANE**

**TYPICAL TURN LANE MARKING**

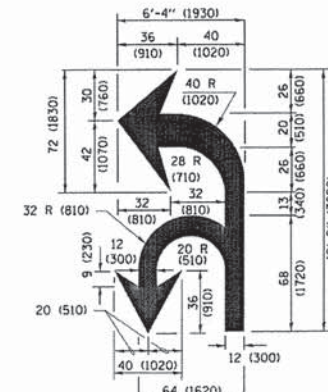
FULL SIZE LETTERS 8' (2.4 m) AND ARROWS SHALL BE USED.  
 AREA = 15.6 SQ. FT. (1.5 m<sup>2</sup>) ONLY AREA = 20.8 SQ. FT. (1.9 m<sup>2</sup>)  
 \* TURN LANES IN EXCESS OF 400' (120 m) IN LENGTH MAY HAVE AN ADDITIONAL SET OF ARROW - "ONLY" INSTALLED MIDWAY BETWEEN THE OTHER TWO SETS OF ARROW - "ONLY".



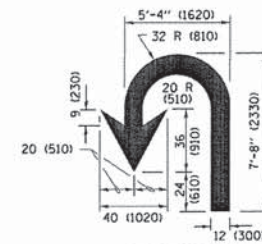
**ISLAND OFFSET FROM PAVEMENT EDGE**



**ISLAND AT PAVEMENT EDGE  
TYPICAL ISLAND MARKING**



**COMBINATION LEFT AND U-TURN**



**U-TURN**

**LANE REDUCTION TRANSITION**

\* LANE REDUCTION ARROWS REQUIRED AT SPEEDS OF 45 MPH OR GREATER OR WHEN SPECIFIED IN PLANS.

D(FT)	SPEED LIMIT
345	30
425	35
500	40
580	45
665	50
750	55

TYPE OF MARKING	WIDTH OF LINE	PATTERN	COLOR	SPACING /REMARKS
CENTERLINE ON 2 LANE PAVEMENT	4 (100)	SKIP-DASH	YELLOW	10' (3 m) LINE WITH 30' (9 m) SPACE
CENTERLINE ON MULTI-LANE UNDIVIDED PAVEMENT	2 @ 4 (100)	SOLID	YELLOW	11 (280) C-C
NO PASSING ZONE LINES FOR ONE DIRECTION FOR BOTH DIRECTIONS	4 (100) 2 @ 4 (100)	SOLID SOLID	YELLOW YELLOW	5/2 (140) C-C FROM SKIP-DASH CENTERLINE 11 (280) C-C OMIT SKIP-DASH CENTERLINE BETWEEN
LANE LINES	4 (100) 5 (125) ON FREEWAYS	SKIP-DASH SKIP-DASH	WHITE WHITE	10' (3 m) LINE WITH 30' (9 m) SPACE
DOTTED LINES (EXTENSIONS OF CENTER, LANE OR TURN LANE MARKINGS)	SAME AS LINE BEING EXTENDED	SKIP-DASH	SAME AS LINE BEING EXTENDED	2' (600) LINE WITH 6' (1.8 m) SPACE
EDGE LINES	4 (100)	SOLID	YELLOW-LEFT WHITE-RIGHT	OUTLINE MEDIANS IN YELLOW
TURN LANE MARKINGS	6 (150) LINE; FULL SIZE LETTERS & SYMBOLS (8' (2.4m))	SOLID	WHITE	SEE TYPICAL TURN LANE MARKING DETAIL
TWO WAY LEFT TURN MARKING	2 @ 4 (100) EACH DIRECTION 8' (2.4m) LEFT ARROW	SKIP-DASH AND SOLID IN PAIRS	YELLOW WHITE	10' (3 m) LINE WITH 30' (9 m) SPACE FOR SKIP-DASH; 5/2 (140) C-C BETWEEN SOLID LINE AND SKIP-DASH LINE SEE TYPICAL TWO-WAY LEFT TURN MARKING DETAIL
CROSSWALK LINES (PEDESTRIAN) A, DIAGONALS (BIKE & EQUESTRIAN) B, LONGITUDINAL BARS (SCHOOL)	2 @ 6 (150) 12 (300) @ 45° 12 (300) @ 90°	SOLID SOLID SOLID	WHITE WHITE WHITE	NOT LESS THAN 6' (1.8 m) APART 2' (600) APART SEE TYPICAL CROSSWALK MARKING DETAILS.
STOP LINES	24 (600)	SOLID	WHITE	PLACE 4' (1.2 m) IN ADVANCE OF AND PARALLEL TO CROSSWALK, IF PRESENT. OTHERWISE, PLACE AT DESIRED STOPPING POINT, PARALLEL TO CROSSROAD CENTERLINE, WHERE POSSIBLE
PAINTED MEDIANS	2 @ 4 (100) WITH 12 (300) DIAGONALS @ 45° NO DIAGONALS USED FOR 4' (1.2 m) WIDE MEDIANS	SOLID	YELLOW; TWO WAY TRAFFIC WHITE; ONE WAY TRAFFIC	11 (280) C-C FOR THE DOUBLE LINE SEE TYPICAL PAINTED MEDIAN MARKING.
CORE MARKING AND CHANNELIZING LINES	8 (200) WITH 12 (300) DIAGONALS @ 45°	SOLID	WHITE	DIAGONALS: 15' (4.5 m) C-C (LESS THAN 30MPH (50 km/h)) 20' (6 m) C-C 30MPH (50 km/h) TO 45MPH (70 km/h) 30' (9 m) C-C (OVER 45MPH (70 km/h))
RAILROAD CROSSING	24 (600) TRANSVERSE LINES; "RR" 15' (4.5 m) LETTERS; 16 (400) LINE FOR "X"	SOLID	WHITE	SEE STATE STANDARD 780001 AREA OF "R"=3.6 SQ. FT. (0.33 m <sup>2</sup> ) EACH "X"=54.0 SQ. FT. (5.0 m <sup>2</sup> )
SHOULDER DIAGONALS (REQUIRED FOR SHOULDERS ≥ 8')	12 (300) @ 45°	SOLID	WHITE - RIGHT YELLOW - LEFT	50' (15 m) C-C (LESS THAN 30MPH (50 km/h)) 75' (25 m) C-C (30 MPH (50 km/h) TO 45MPH (70 km/h)) 150' (45 m) C-C (OVER 45MPH (70 km/h))
U TURN ARROW	SEE DETAIL	SOLID	WHITE	16.3 SF
2 ARROW COMBINATION LEFT AND U TURN	SEE DETAIL	SOLID	WHITE	30.4 SF

FOR FURTHER DETAILS ON PAVEMENT MARKING REFER TO STANDARD SPECIFICATIONS FOR ROAD AND BRIDGE CONSTRUCTION AND STATE STANDARD 780001.

All dimensions are in inches (millimeters) unless otherwise shown.

Copyright © 2014 by BAKER & BODMAN, INC. All rights reserved. No part of this publication may be reproduced, stored in a retrieval system, or transmitted, in any form or by any means, electronic, mechanical, photocopying, recording, or by any information storage and retrieval system, without the prior written permission of Baker & Bodman, Inc. License No. 18-0-0021 - EXPIRES 4/30/2015  
 FILE NAME = ... USER NAME = jsockrf ... DESIGNED - EVERS ... REVISED - T. RAMMACHER 10-27-94 ... REVISED - C. JUCIUS 09-09-09 ... CHECKED - ... DATE - 03-19-90 ... REVISED - C. JUCIUS 07-01-13 ... REVISED - C. JUCIUS 12-21-15  
 PLOT SCALE = 50,000' / 1" ... PLOT DATE = 12/21/2015  
 DISTRICT ONE  
 TYPICAL PAVEMENT MARKINGS  
 SCALE: NONE SHEET 1 OF 1 SHEETS STA. TO STA.  
 F.A. RTE. SECTION COUNTY TOTAL SHEETS NO.  
 2625 14-00051-00-RS DuPAGE 24 23  
 TC-13 CONTRACT NO. 61C61  
 ILLINOIS FED. AID PROJECT M-4003(303)

STATE OF ILLINOIS  
DEPARTMENT OF TRANSPORTATION



