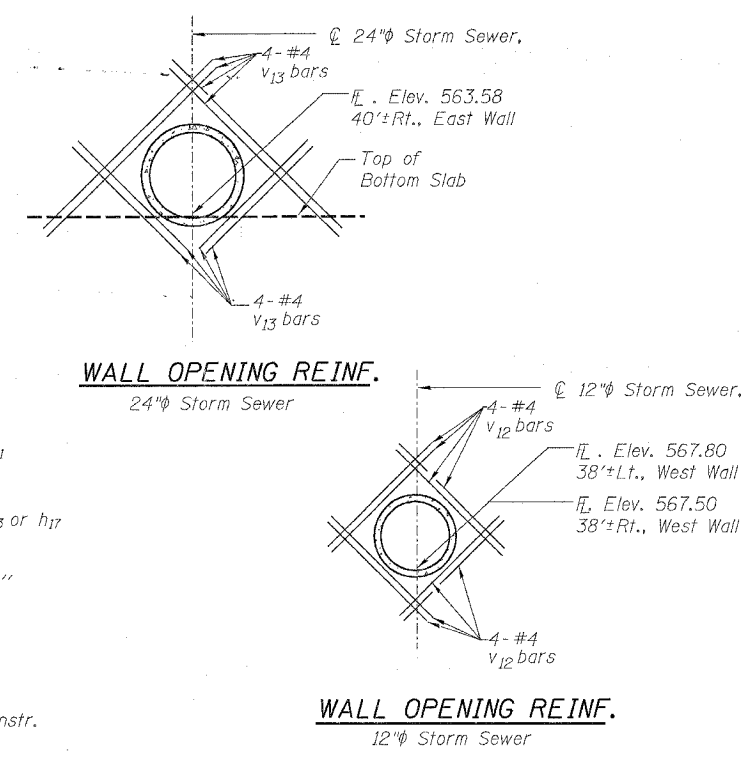
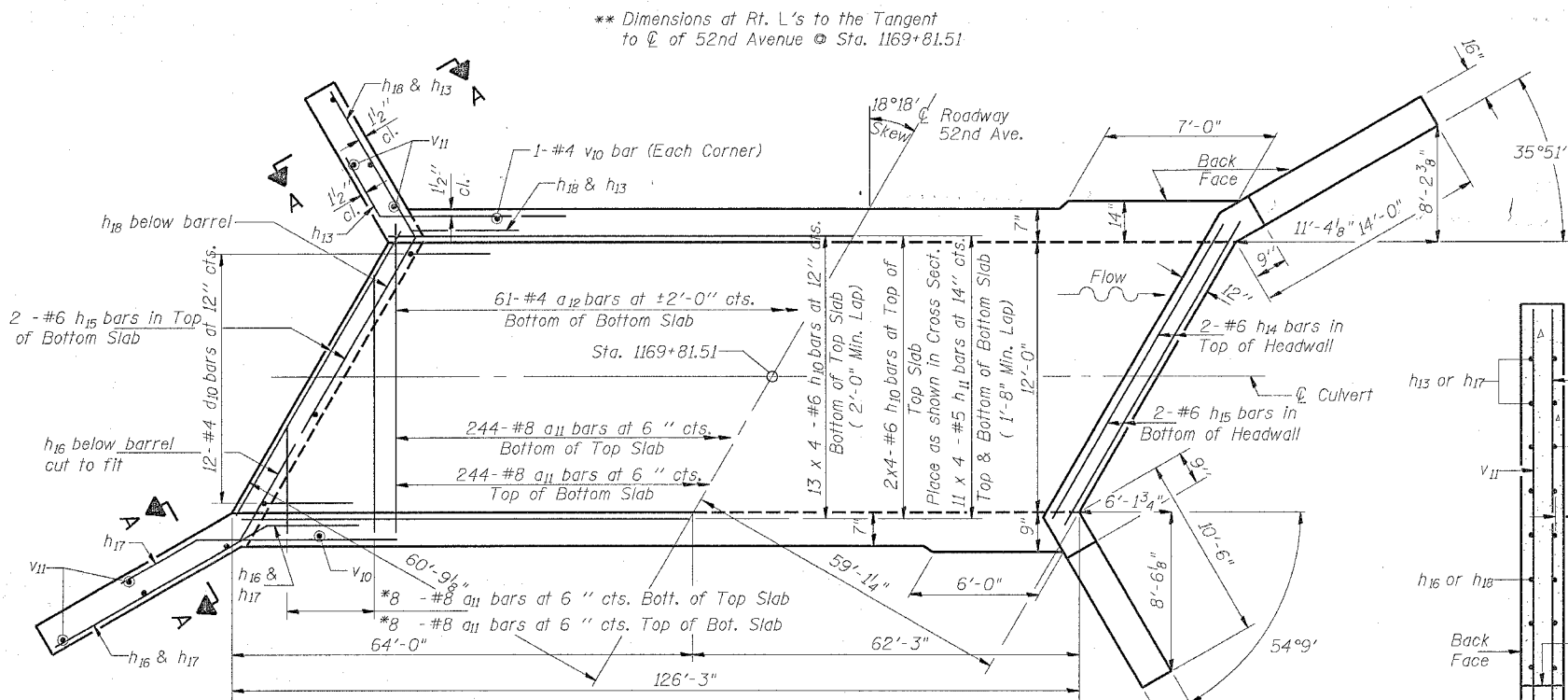
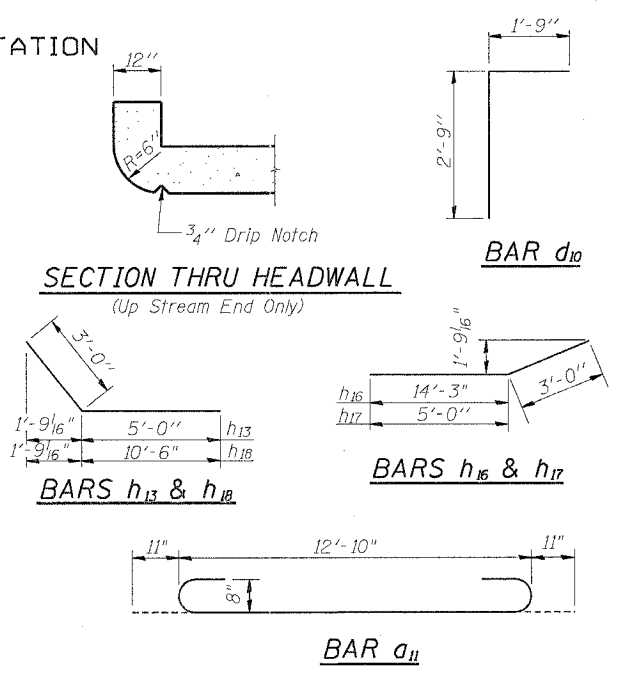
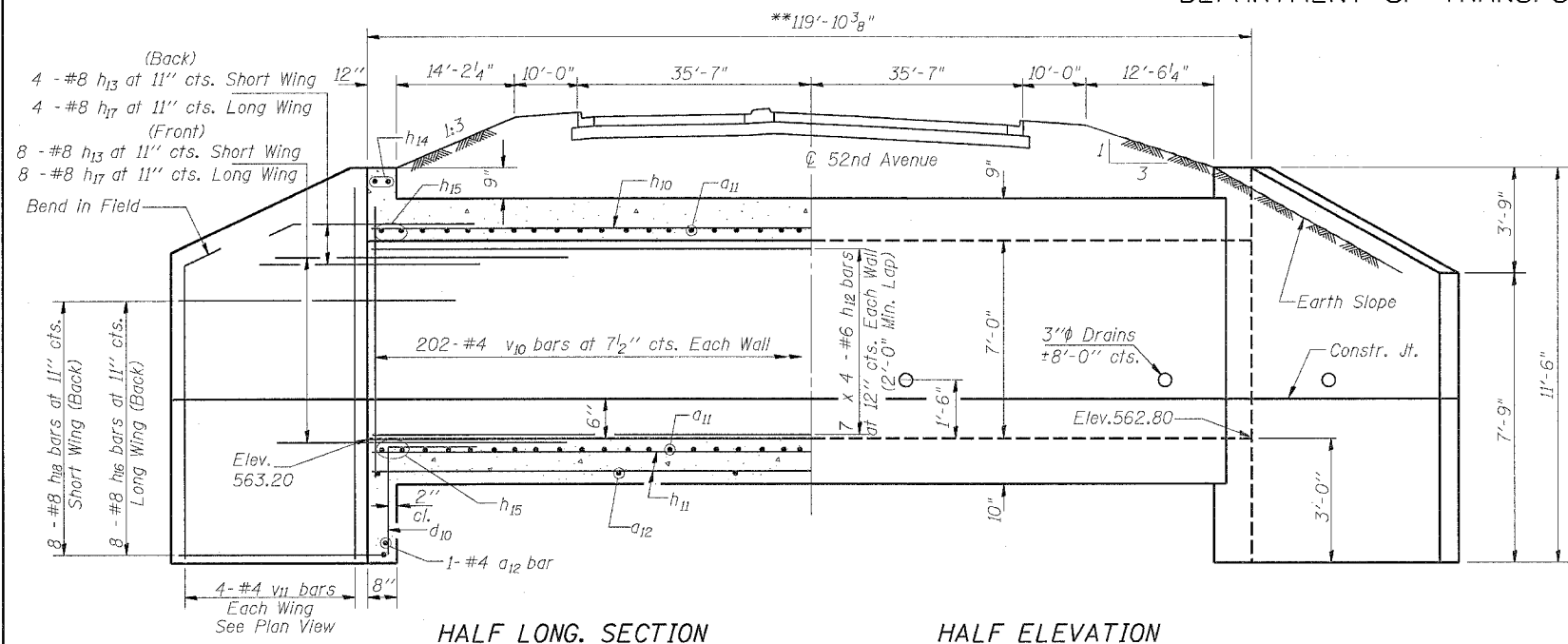


STATE OF ILLINOIS  
DEPARTMENT OF TRANSPORTATION

ROUTE NO.	SECTION	COUNTY	STATION	SHEET	SHEET NO. 1
F.A.P. 595	1-3-K	Rock Island	476	286	1 SHEETS
FED. ROAD DIST. NO. 7	ILLINOIS	FED. AID PROJECT			



SECTION THRU BARREL

**BILL OF MATERIAL**

Bar	No.	Size	Length	Shape	
a11	504	#8	14'-8"	C	
a12	63	#4	12'-3"	—	
d10	24	#4	4'-6"	L	
h10	60	#6	33'-3"	—	
h11	88	#5	33'-0"	—	
h12	56	#6	33'-3"	—	
h13	24	#8	8'-0"	—	
h14	4	#6	13'-6"	—	
h15	8	#6	13'-6"	—	
h16	16	#8	17'-3"	—	
h17	24	#8	13'-0"	—	
h18	16	#8	13'-6"	—	
v10	408	#4	8'-3"	—	
v11	16	#4	11'-2"	—	
v12	16	#4	3'-3"	—	
v13	8	#4	3'-9"	—	
Concrete Box Culverts				Cu. Yd.	162.1
Reinforcement Bars				Pound	34,160

\* a bars in skew portion of slab shall be ordered full length & cut to fit. Balance of bar to be used in opposite end of culvert.

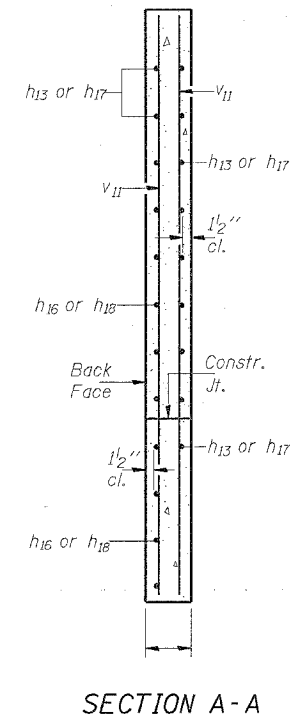
SHOWING REINFORCEMENT  
SHOWING OUTLINES  
PLAN

**WATERWAY INFORMATION**

Drainage Area = 183 Acres		Low Grade Elev. 571.50 @ Sta. 1172+00					
Flood	Freq. Yr.	Q C.F.S.	Opening Sq. Ft.	Nat. H.W.E.	Head - Ft. Exist.	Headwater El. Exist.	Headwater El. Prop.
Design	10	197	41.8	564.85	1.83	566.68	
Base	50	282	52.6	565.16	2.42	567.58	
Overlapping	100	314	56.5	565.30	2.61	567.91	
Max. Calc.	500	N/A	-	-	-	-	-

DESIGNED	BDF
CHECKED	BDF
DRAWN	RAP
CHECKED	BDF

SSB-H-R 6-1-2000



SECTION A-A

**NOTES**  
A distance of half the length of the wingwall but not less than six feet of the barrel shall be poured monolithically with the wingwalls.  
Reinforcement Bars shall conform to the requirements of AASHTO M-31, M-42 or M-53, Grade 60.  
Bars indicated thus 12 x 4-#5 etc. indicates 12 lines of bars with 4 lengths per line.  
All construction joints shall be bonded.  
Precast culvert alternate is not allowed.

**DESIGN STRESSES**

fy = 60,000 psi  
f'c = 3,500 psi

LOADING HS 20-44 & ALT.

**12'-0"x 7'-0" R.C. BOX CULVERT**  
52nd AVENUE  
FA ROUTE 595 SECTION 1-3-K  
ROCK ISLAND COUNTY  
STATION 1169+81.51