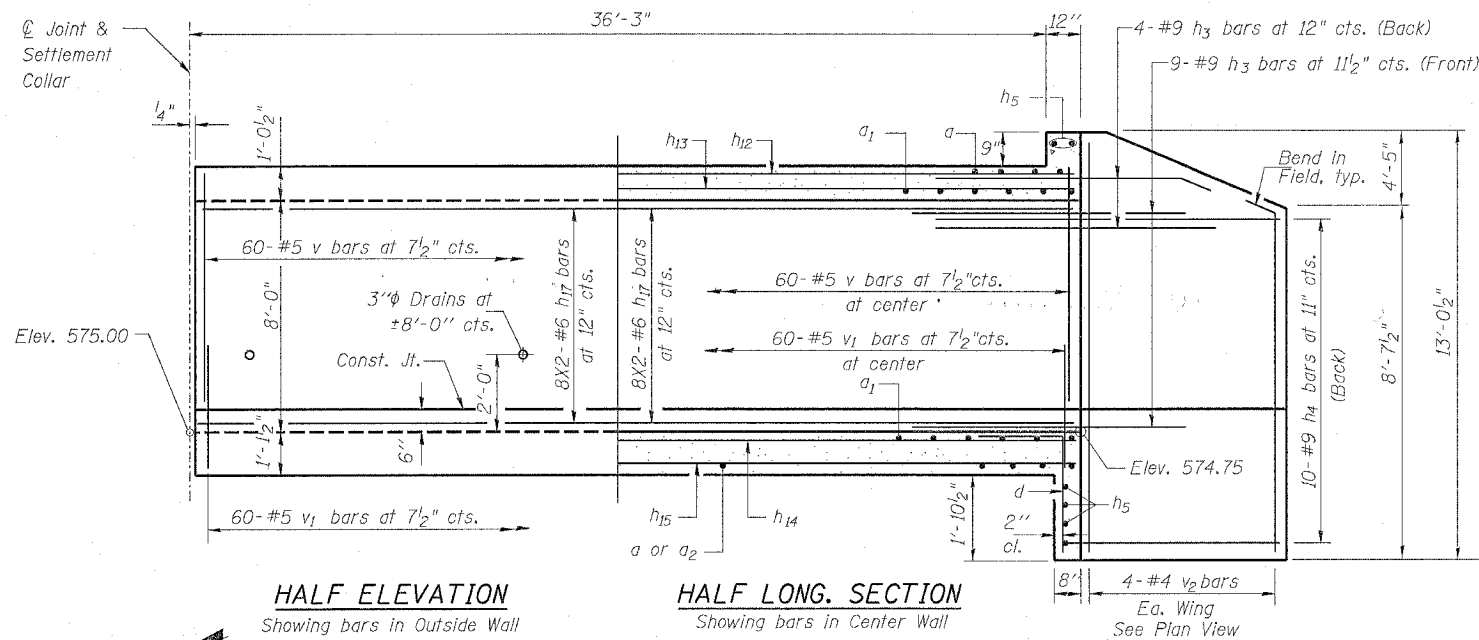


STATE OF ILLINOIS
DEPARTMENT OF TRANSPORTATION

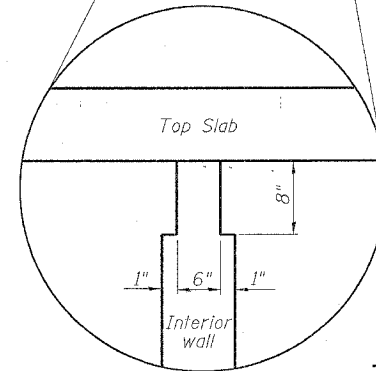
ROUTE NO.	SECTION	COUNTY	SHEET NO.	SHEET	SHEET NO.
F.A.P. 595	I-3-K	Rock Island	476	277	7 SHEETS
FED. ROAD DIST. NO. 7		ILLINOIS		FED. AID PROJECT-	



HALF ELEVATION
Showing bars in Outside Wall

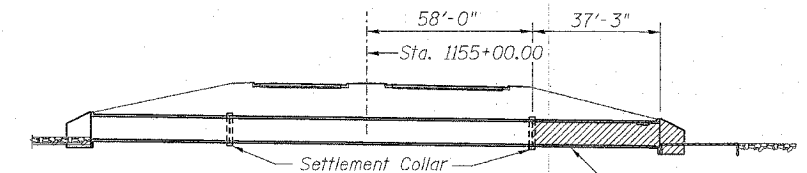
HALF LONG. SECTION
Showing bars in Center Wall

SECTION THRU BARREL
Near downstream end



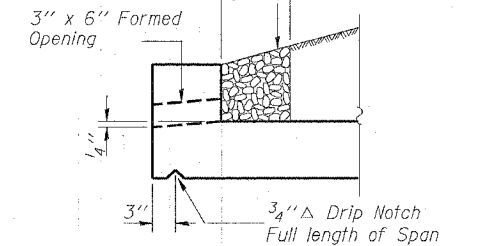
NOTCH DETAIL

LONGITUDINAL SECTION
Wingwall not shown



KEY ELEVATION

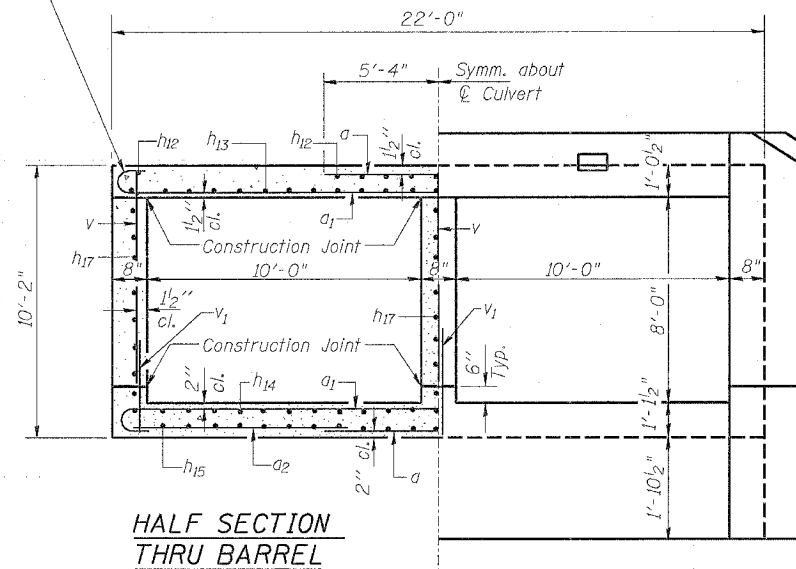
Looking east along ϕ culvert
Coarse aggregate full length of headwall. To be placed by Grading Contractor. Cost included with Concrete Box Culverts.



AT DOWNSTREAM END DRAIN DETAIL

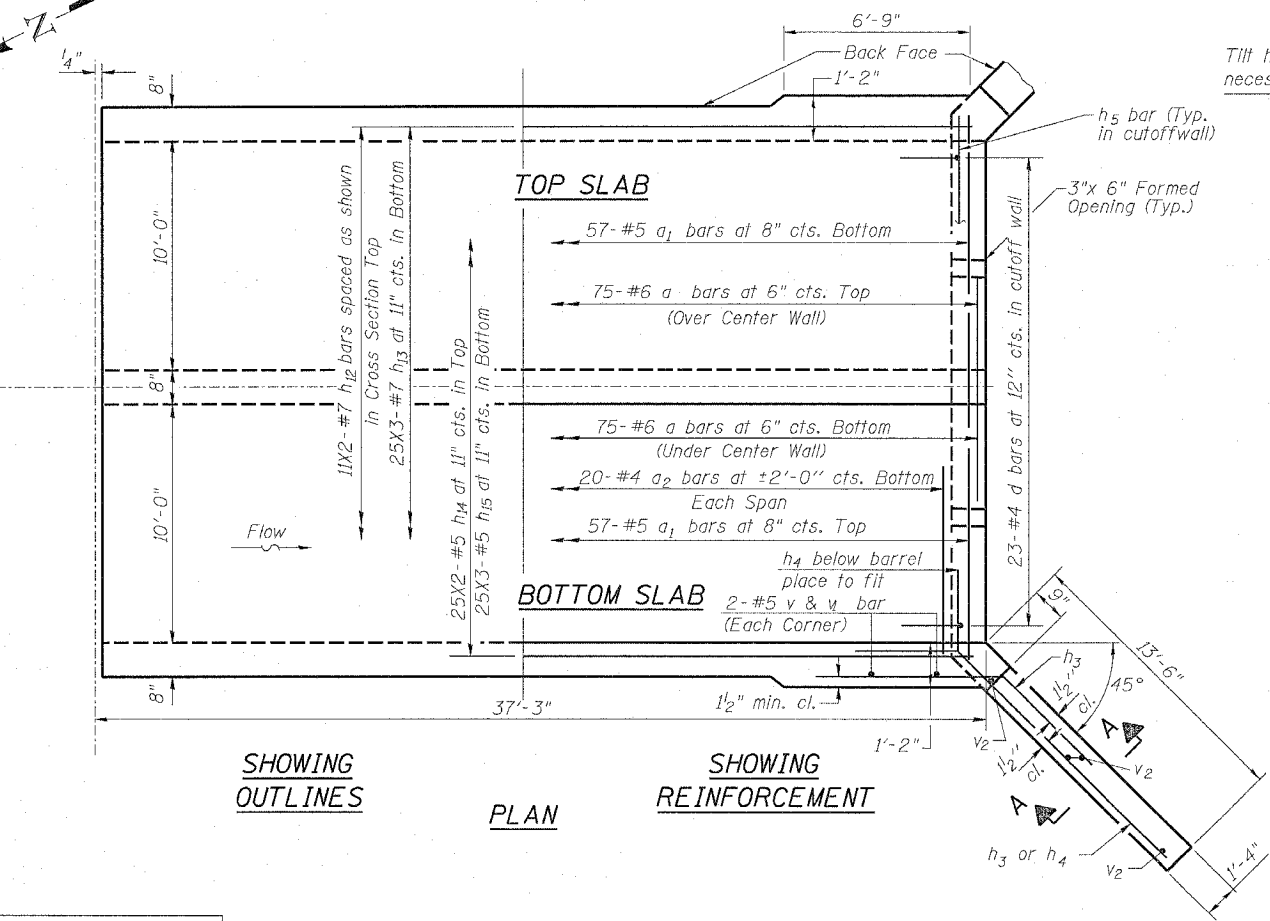
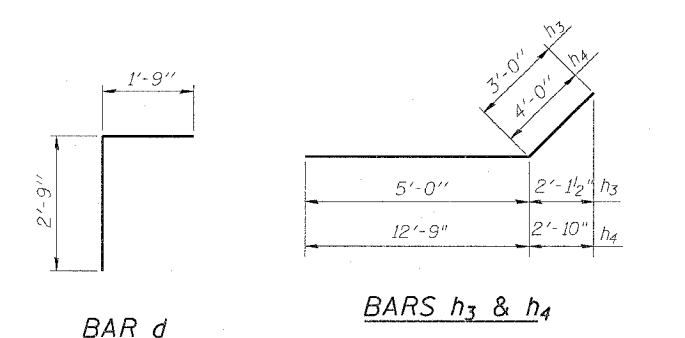
PHOEBE NESTING SITE DETAILS

Tilt hook of a_1 bars if necessary for 1/2" min. cl.



HALF SECTION THRU BARREL

HALF END ELEVATION



SHOWING OUTLINES

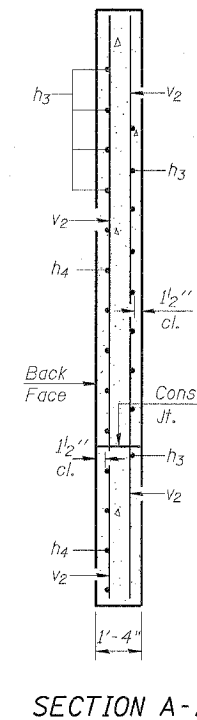
PLAN

SHOWING REINFORCEMENT

Lap Length
#5 Bar 1'-8"
#6 Bar 2'-0"
#7 Bar 2'-9"

BILL OF MATERIAL SOUTH SECTION

Bar	No.	Size	Length	Shape
a	150	#6	10'-8"	—
a1	114	#5	22'-10"	—
a2	40	#4	6'-10"	—
d	23	#4	4'-6"	—
h3	26	#9	8'-0"	—
h4	20	#9	16'-9"	—
h5	5	#6	21'-8"	—
h12	22	#7	19'-9"	—
h13	75	#7	14'-2"	—
h14	50	#5	19'-3"	—
h15	75	#5	13'-5"	—
h17	48	#6	19'-5"	—
v	184	#5	8'-2"	—
v1	184	#5	3'-4"	—
v2	8	#4	12'-6"	—
Concrete Box Culverts			Cu. Yd.	106.8
Reinforcement Bars			Pound	16,170



SECTION A-A

CULVERT DETAILS AND SECTION

52ND AVENUE EXTENSION
OVER AN UNNAMED STREAM
FAU ROUTE 5822 SECTION I-3
ROCK ISLAND COUNTY
STATION 1155+00
STRUCTURE NO. 081-2035

DESIGNED	JDC
CHECKED	BDF
DRAWN	RAP
CHECKED	BDF

DB-H-0 10-31-02