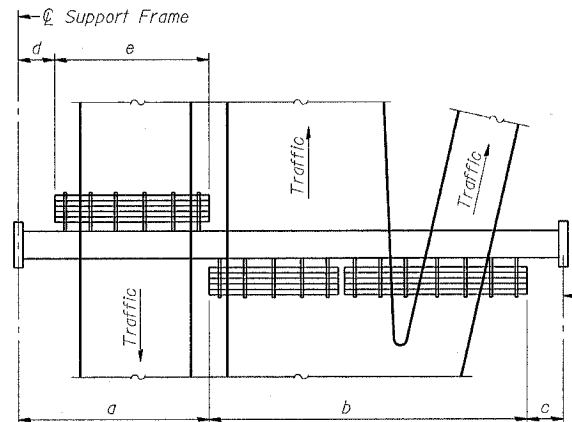
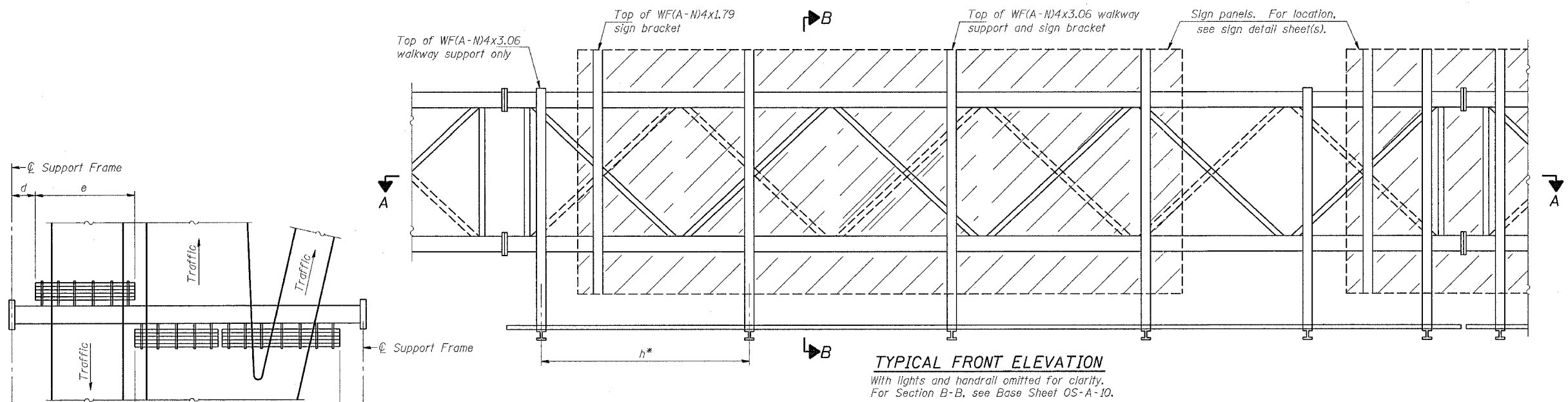
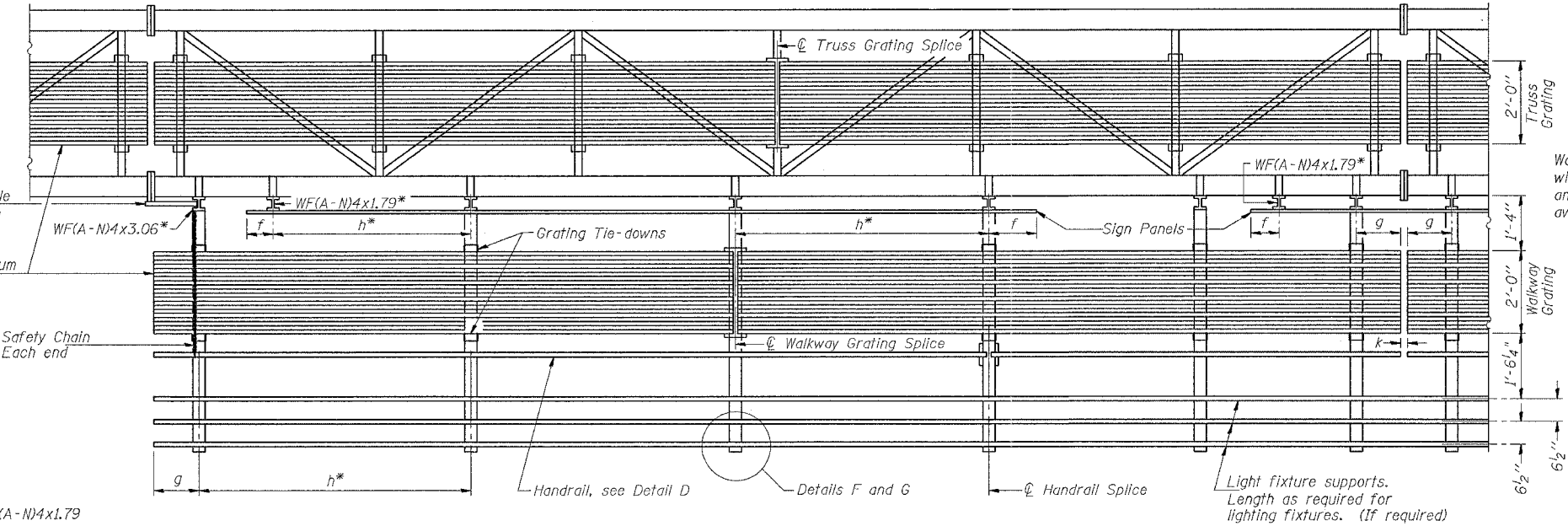


F.A.P. RTE.	SECTION	COUNTY	TOTAL SHEETS	SHEET NO.
595	1-3-K	ROCKISLAND	476	240
STA.		TO STA.		
FED. ROAD DIST. NO.		ILLINOIS FED. AID PROJECT		



BRACKET TABLE

Sign Width		Number Brackets Required
Greater Than	Less Than or Equal To	
	10'-0"	2
	16'-0"	3
	22'-0"	4
	28'-0"	5
	34'-0"	6



Walkway and Truss Grating width dimensions are nominal and may vary ±1/2" based on available standard widths.

Notes: *Space walkway brackets WF(A-N)4x3.06 and sign brackets WF(A-N)4x1.79 for efficiency and within limits shown:
 f = 12" maximum, 4" minimum (End of sign to center of nearest bracket)
 g = 12" maximum, 4" minimum (End of walkway grating to center of nearest support bracket)
 h = 6'-0" maximum (center to center of sign and/or walkway support brackets, WF(A-N)4x1.79 or WF(A-N)4x3.06)
 k = 2" maximum gap between adjacent walkway grating sections and handrail ends
 **If walkway bracket at safety chain location is behind sign, add angle to bracket, see Alternate Safety Chain Attachment on Base Sheet OS-A-11.
 For Details T and W, Section B-B and Grating Splice Details, see Base Sheet OS-A-10.
 For Details D, F, G and P and Handrail Splice Details, see Base Sheet OS-A-11.

Structure Number	Station	a	b	c	d	e	Walkway Grating and Handrail Lengths
2S08INMB35900	359+00	50'	35'	15'	12'	38'	73'
2S08INMB38150	381+50	44'	49'	27'	0'	44'	93'

OVERHEAD SIGN STRUCTURES ALUMINUM WALKWAY DETAILS

REVISIONS		ILLINOIS DEPARTMENT OF TRANSPORTATION
NAME	DATE	
		SCALE: VERT. HORIZ. DATE DRAWN BY CHECKED BY

NUMBER	REVISION	DATE

PLOT DATE = Wed Jan 26 07:32:17 2005
 FILE NAME = c:\projects\hwy\sign\shwts\shg.dgn
 PLOT SCALE = 20.0000 7 IN.
 REFERENCE = #REF#