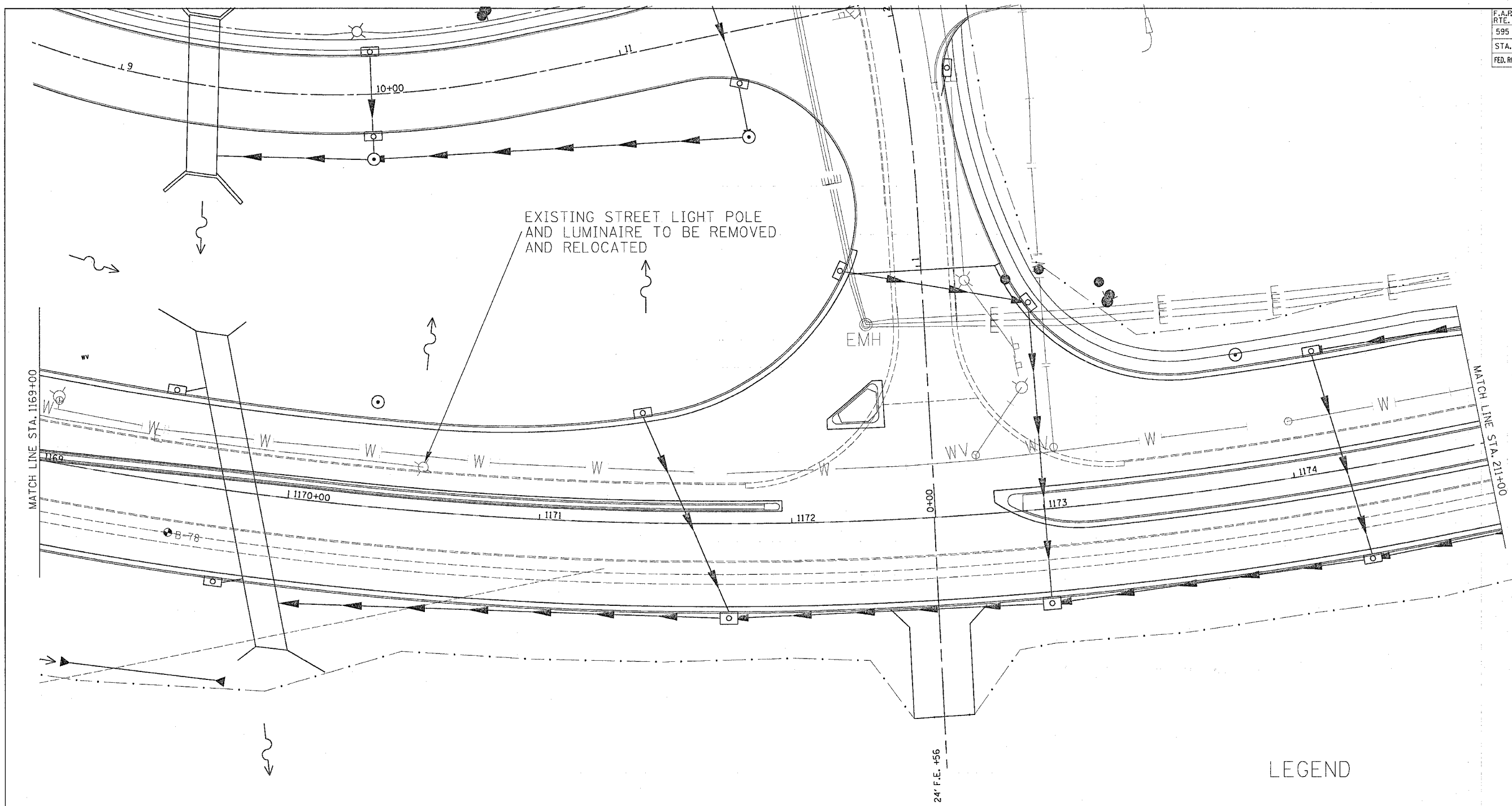


F.A.R. RTE.	SECTION	COUNTY	TOTAL SHEETS	SHEET NO.
595	1-3-K	ROCK ISLAND	476	217
STA.		TO STA.		
FED. ROAD DIST. NO.		ILLINOIS FED. AID PROJECT		



LIGHTING NOTES

1. GROUND RODS SHALL BE INSTALLED IN ALL LIGHT BASES.
2. ALL POLES SHALL BE CONNECTED TO ALTERNATE SIDES OF CIRCUIT.
3. EXISTING LIGHTING CABLES SHALL BE ABANDONED IN PLACE.

LEGEND

- PROPOSED UNIT DUCT LIGHTING CABLE
- ⊗ RELOCATED LIGHT POLE
- ⊗ EXISTING LIGHT POLE TO BE RELOCATED