

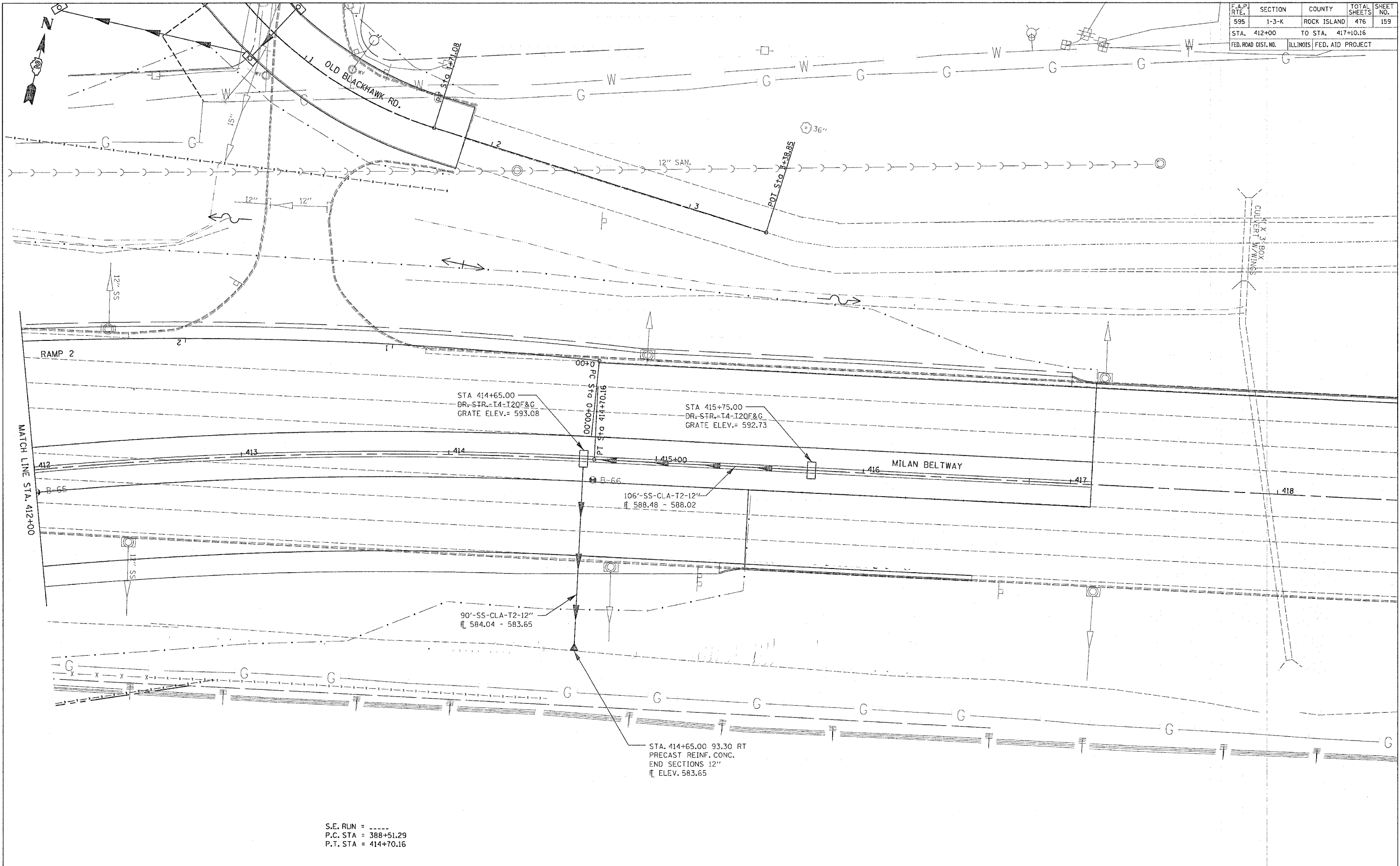
F.A.P. RTE.	SECTION	COUNTY	TOTAL SHEETS	SHEET NO.
595	1-3-K	ROCK ISLAND	476	159
STA. 412+00		TO STA. 417+10.16		
FED. ROAD DIST. NO.		ILLINOIS FED. AID PROJECT		

DATE	BY

DRAIN SURVEYED  
 ALIGNED  
 RT. OF WAY CHECKED  
 NOTE BOOK NO. \_\_\_\_\_  
 CAD FILE NAME \_\_\_\_\_

DATE	BY

PROFILE SURVEYED  
 B.M. NOTED  
 STRUCTURE NOTATIONS C/P/D  
 NOTE BOOK NO. \_\_\_\_\_



S.E. RUN = -----  
 P.C. STA = 388+51.29  
 P.T. STA = 414+70.16