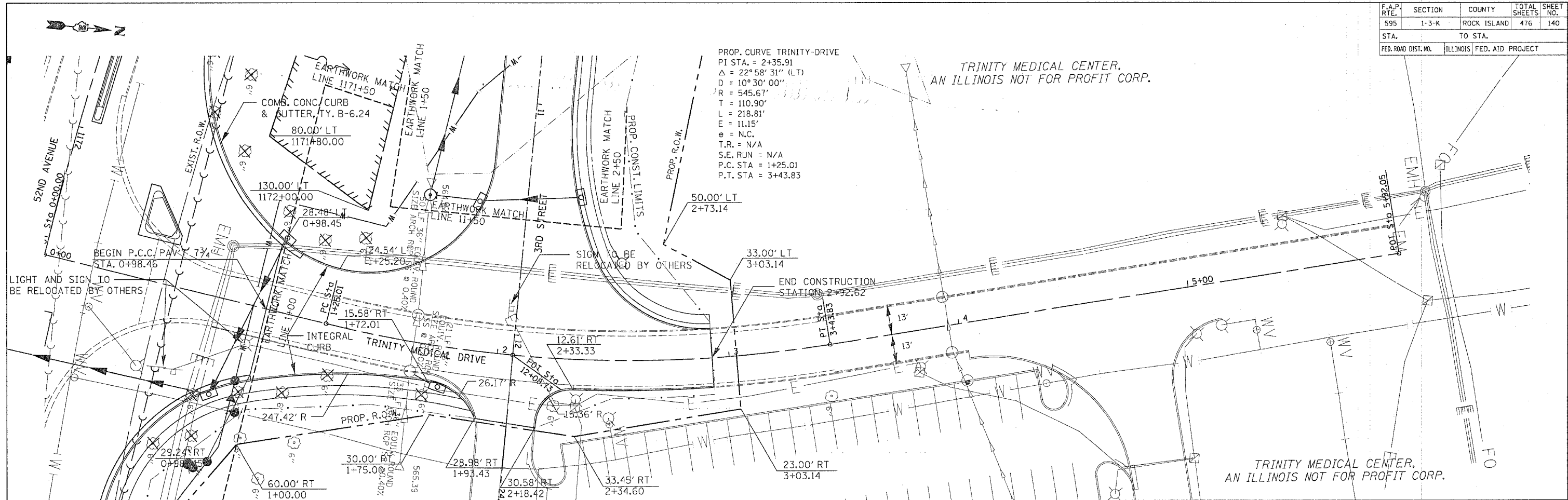


F.A.P. RTE.	SECTION	COUNTY	TOTAL SHEETS	SHEET NO.
595	1-3-K	ROCK ISLAND	476	140
STA.		TO STA.		
FED. ROAD DIST. NO.		ILLINOIS FED. AID PROJECT		



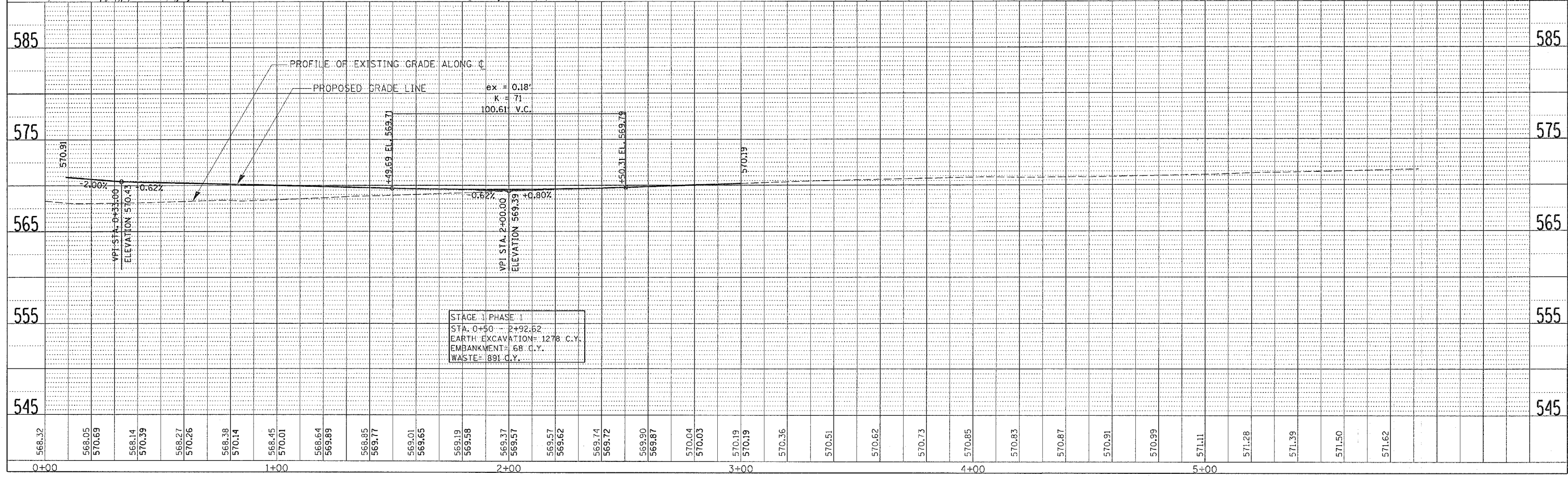
PROP. CURVE TRINITY-DRIVE
 PI STA. = 2+35.91
 $\Delta = 22^\circ 58' 31''$ (LT)
 $D = 10^\circ 30' 00''$
 $R = 545.67'$
 $T = 110.90'$
 $L = 218.81'$
 $E = 11.15'$
 $\epsilon = \text{N.C.}$
 $T.R. = \text{N/A}$
 $S.E. \text{ RUN} = \text{N/A}$
 $P.C. \text{ STA.} = 1+25.01$
 $P.T. \text{ STA.} = 3+43.83$

TRINITY MEDICAL CENTER,
 AN ILLINOIS NOT FOR PROFIT CORP.

TRINITY MEDICAL CENTER,
 AN ILLINOIS NOT FOR PROFIT CORP.

PLAN	REVISION	DATE
NO. _____	BY _____	DATE _____

PROFILE	REVISION	DATE
NO. _____	BY _____	DATE _____



STAGE 1 PHASE 1
 STA. 0+50 - 2+92.62
 EARTH EXCAVATION= 1278 C.Y.
 EMBANKMENT= 68 C.Y.
 WASTE= 891 C.Y.

TRINITY MEDICAL DRIVE - STA. 0+00 TO STA. 5+17.30