

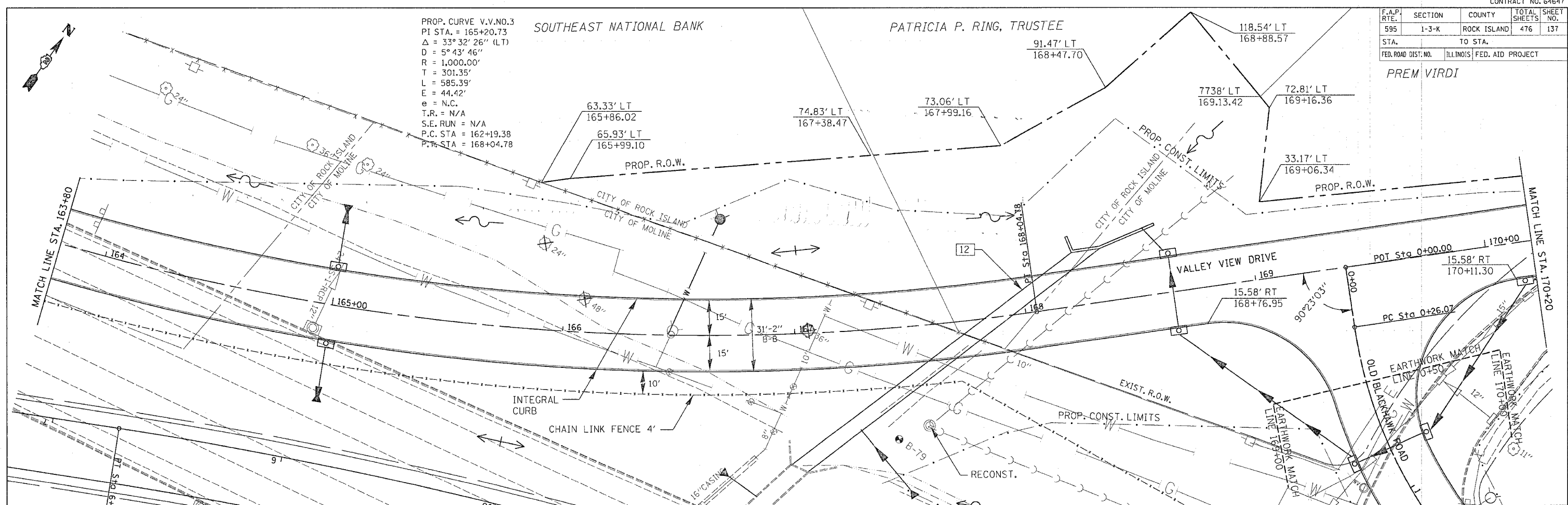
F.A.P. RTE.	SECTION	COUNTY	TOTAL SHEETS	SHEET NO.
595	1-3-K	ROCK ISLAND	476	137
STA.		TO STA.		
FED. ROAD DIST. NO.		ILLINOIS FED. AID PROJECT		

PREM VIRDI

PROP. CURVE V.V.NO.3  
 PI STA. = 165+20.73  
 $\Delta = 33^{\circ}32'26''$  (LT)  
 $D = 5^{\circ}43'46''$   
 $R = 1,000.00'$   
 $T = 301.35'$   
 $L = 585.39'$   
 $E = 44.42'$   
 $e = N.C.$   
 $T.R. = N/A$   
 $S.E. RUN = N/A$   
 $P.C. STA = 162+19.38$   
 $P.T. STA = 168+04.78$

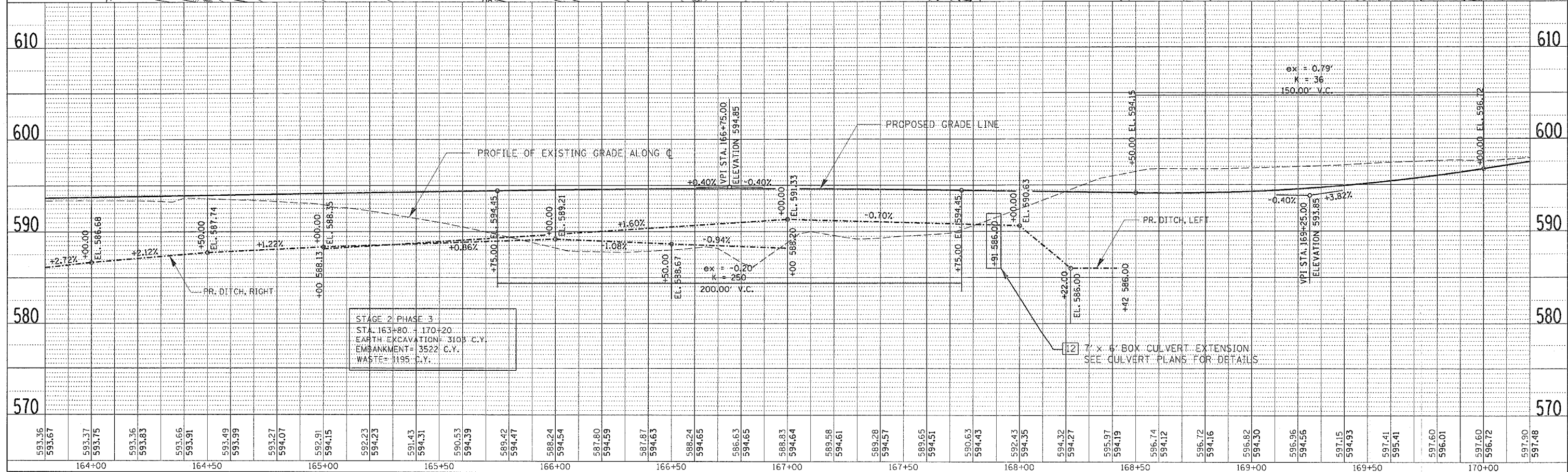
SOUTHEAST NATIONAL BANK

PATRICIA P. RING, TRUSTEE



PLAN	REVISION	DATE
NO. 1	BY: [ ]	[ ]
NO. 2	BY: [ ]	[ ]
NO. 3	BY: [ ]	[ ]
NO. 4	BY: [ ]	[ ]
NO. 5	BY: [ ]	[ ]

PROFILE	REVISION	DATE
NO. 1	BY: [ ]	[ ]
NO. 2	BY: [ ]	[ ]
NO. 3	BY: [ ]	[ ]
NO. 4	BY: [ ]	[ ]
NO. 5	BY: [ ]	[ ]



STAGE 2 PHASE 3  
 STA. 163+80 - 170+20  
 EARTH EXCAVATION= 3103 C.Y.  
 EMBANKMENT= 3522 C.Y.  
 WASTE= 1195 C.Y.

VALLEY VIEW DRIVE - STA. 163+80 TO STA. 170+20