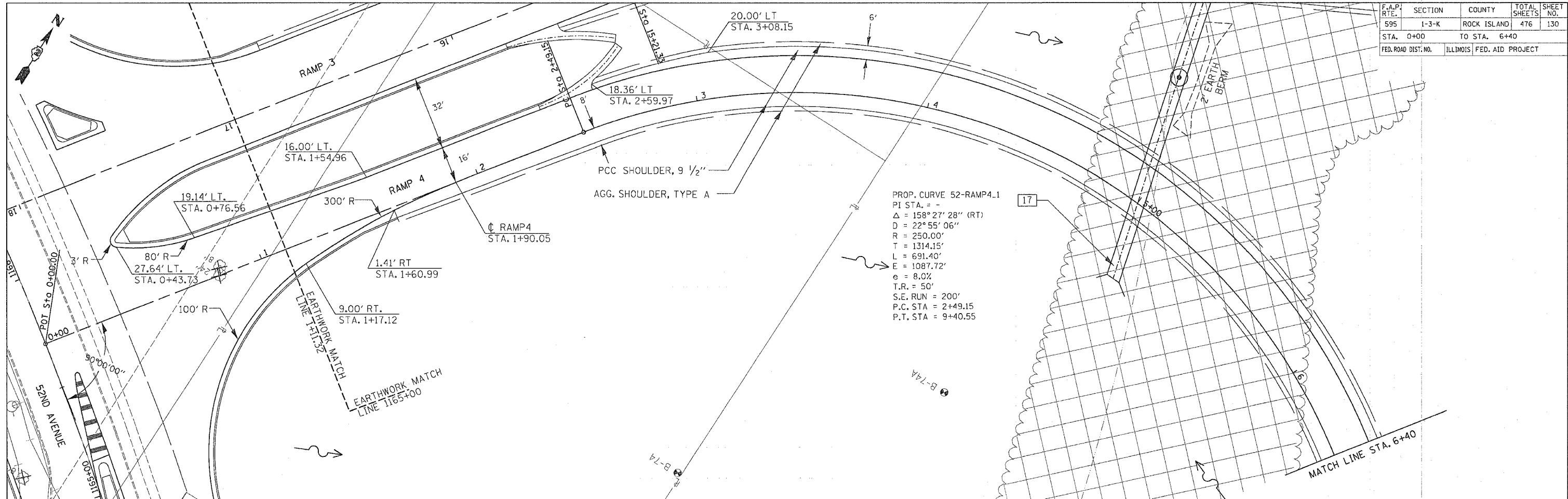


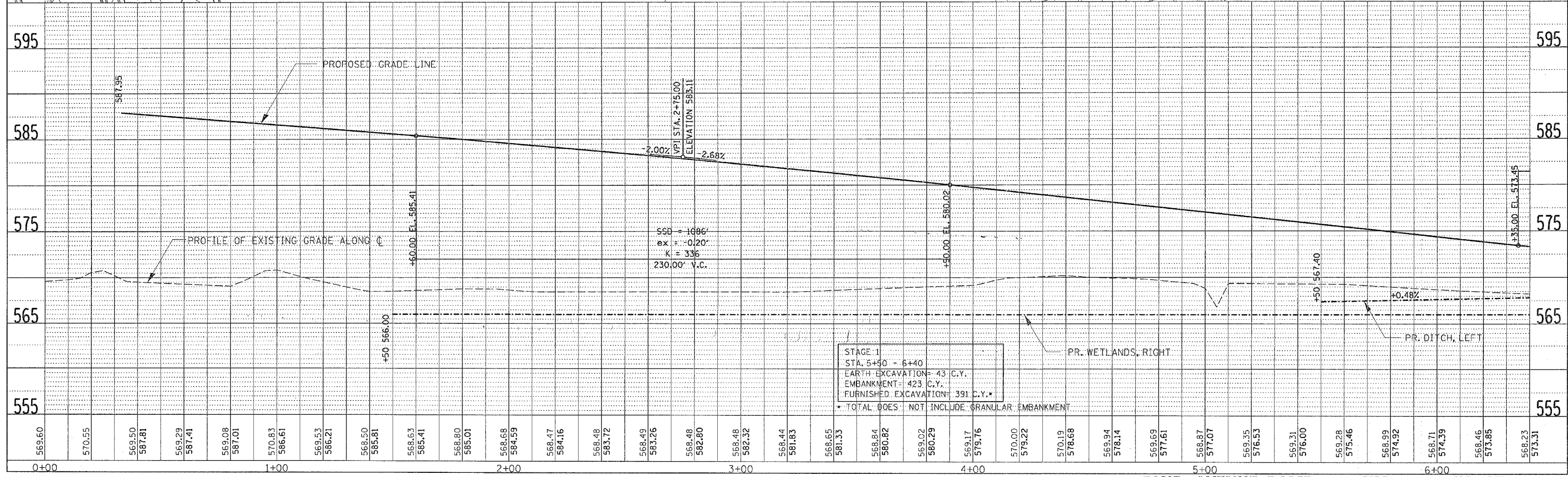
F.A.P. RTE.	SECTION	COUNTY	TOTAL SHEETS	SHEET NO.
595	I-3-K	ROCK ISLAND	476	130
STA. 0+00		TO STA. 6+40		
FED. ROAD DIST. NO.		ILLINOIS FED. AID PROJECT		

REVISIONS	DATE
BY	
NO.	
PLAN	
NOTE BOOK	
CADD FILE NAME	

REVISIONS	DATE
BY	
NO.	
PROFILE	
GRADES CHECKED	
STRUCTURE NOTATIONS CHD	



PROP. CURVE 52-RAMP4.1
 PI STA. = -
 $\Delta = 158^\circ 27' 28''$ (RT)
 $D = 22^\circ 55' 06''$
 $R = 250.00'$
 $T = 1314.15'$
 $L = 691.40'$
 $E = 1087.72'$
 $e = 8.0\%$
 $T.R. = 50'$
 $S.E. RUN = 200'$
 $P.C. STA = 2+49.15$
 $P.T. STA = 9+40.55$



52ND AVENUE RAMP 4 - STA. 0+00 TO STA. 6+40