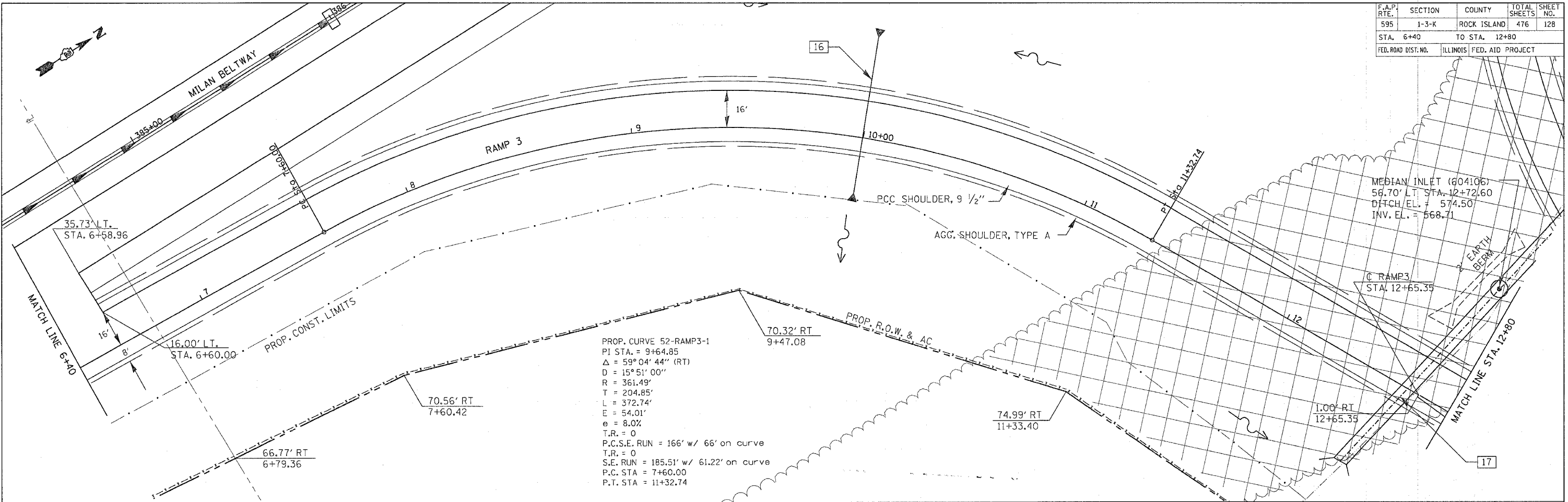


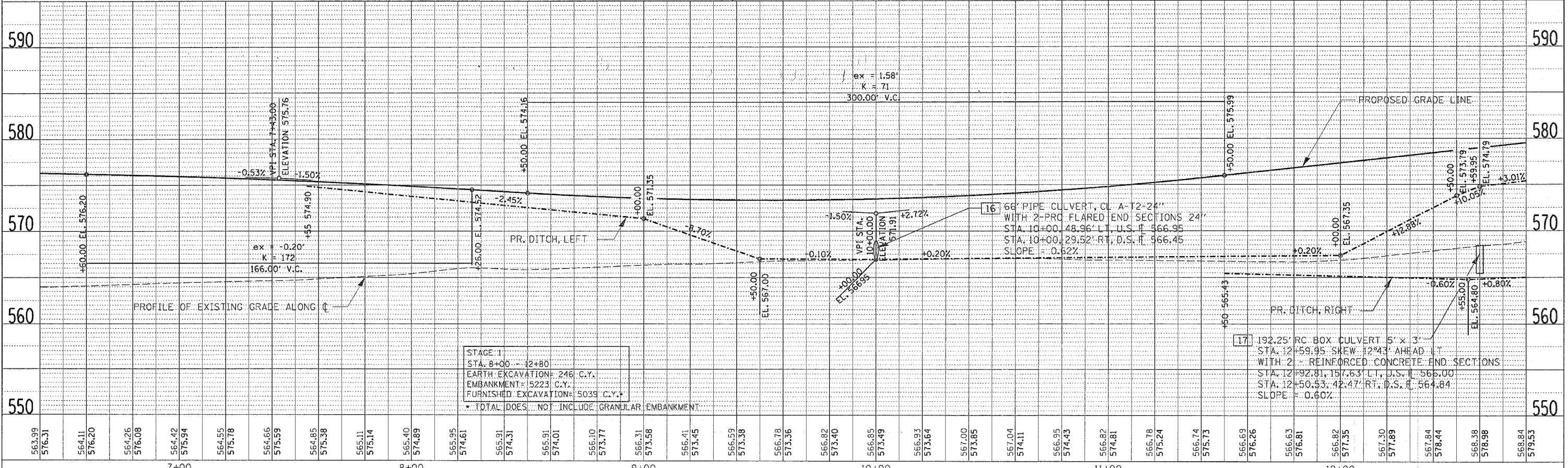
F.A.P. RTE.	SECTION	COUNTY	TOTAL SHEETS	SHEET NO.
595	1-3-K	ROCK ISLAND	476	128
STA. 6+40		TO STA. 12+80		
FED. ROAD DIST. NO.		ILLINOIS FED. AID PROJECT		

PLAN	SURVEYED	DATE
NOTE BOOK	BY	
NO.		

PROFILE	SURVEYED	DATE
NOTE BOOK	BY	
NO.		



PROP. CURVE 52-RAMP3-1  
 PI STA. = 9+64.85  
 $\Delta = 59^{\circ}04'44''$  (RT)  
 $D = 15^{\circ}51'00''$   
 $R = 361.49'$   
 $T = 204.85'$   
 $L = 372.74'$   
 $E = 54.01'$   
 $e = 8.0\%$   
 $T.R. = 0$   
 $P.C.S.E. RUN = 166' w/ 66'$  on curve  
 $T.R. = 0$   
 $S.E. RUN = 185.51' w/ 61.22'$  on curve  
 $P.C. STA = 7+60.00$   
 $P.T. STA = 11+32.74$



STAGE 1  
 STA. 8+00 - 12+80  
 EARTH EXCAVATION= 246 C.Y.  
 EMBANKMENT= 15223 C.Y.  
 FURNISHED EXCAVATION= 5039 C.Y.  
 \* TOTAL DOES NOT INCLUDE GRANULAR EMBANKMENT

16 66" PIPE CULVERT, CL. A-12-24"  
 WITH 2 - PRO. FLARED END SECTIONS 24"  
 STA. 10+00, 48.96' LT, U.S. F. 366.95  
 STA. 10+00, 29.52' RT, D.S. F. 366.45  
 SLOPE = 0.62%

17 192.25' RC BOX CULVERT 5' x 3'  
 STA. 12+59.95 SKEW 12°43' AHEAD LT  
 WITH 2 - REINFORCED CONCRETE END SECTIONS  
 STA. 12+92.81, 157.63' LT, U.S. F. 566.00  
 STA. 12+50.53, 42.47' RT, D.S. F. 564.84  
 SLOPE = 0.60%

52ND AVENUE RAMP 3 - STA. 6+40 TO STA. 12+80