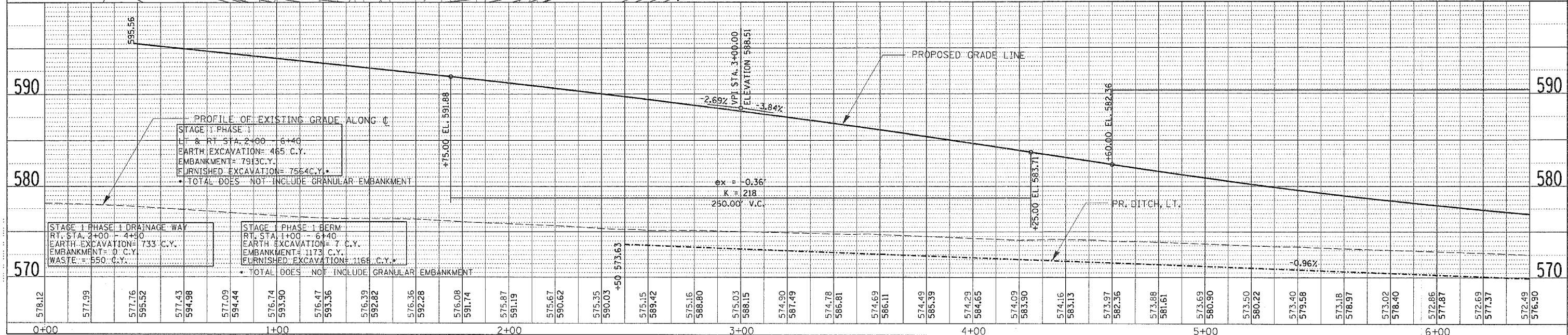
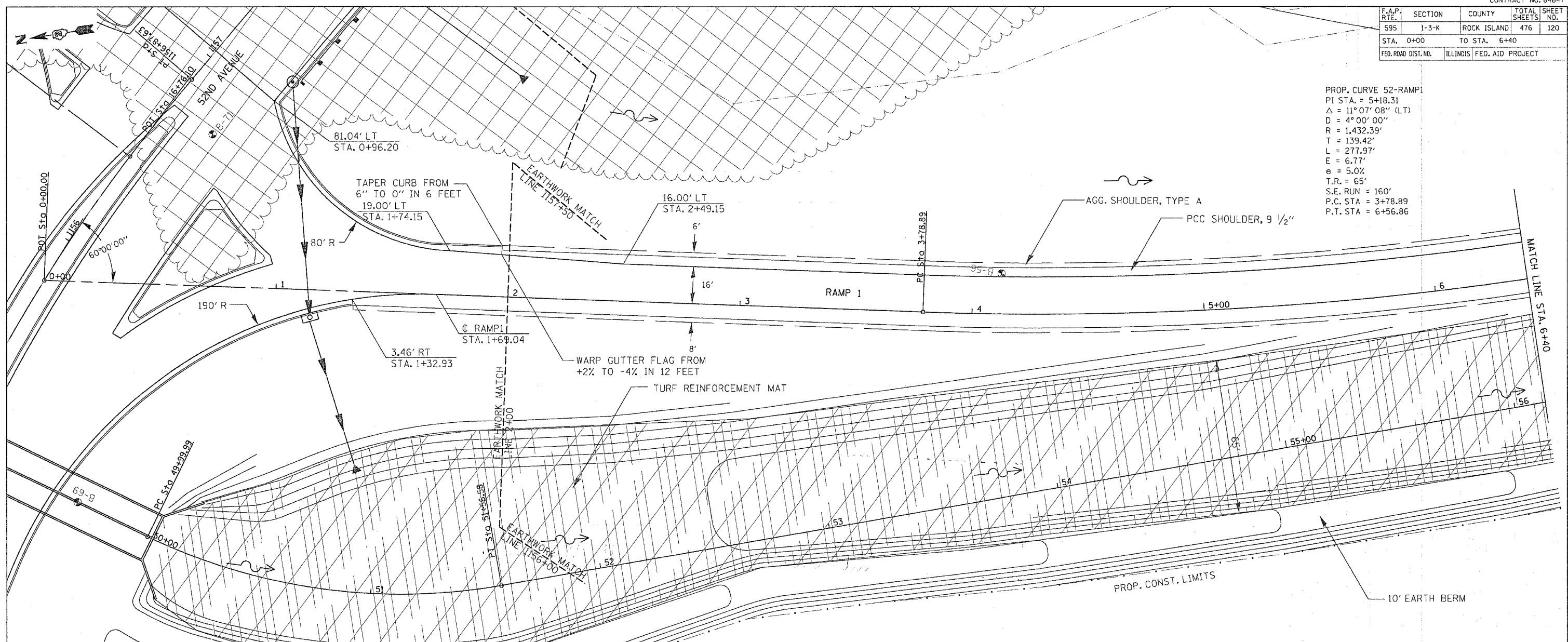


F.A.P. RTE.	SECTION	COUNTY	TOTAL SHEETS	SHEET NO.
595	1-3-K	ROCK ISLAND	476	120
STA. 0+00		TO STA. 6+40		
FED. ROAD DIST. NO.		ILLINOIS FED. AID PROJECT		

PROP. CURVE 52-RAMP1
 PI STA. = 5+18.31
 $\Delta = 11^{\circ}07'08''$ (LT)
 $R = 1,432.39'$
 $T = 139.42'$
 $L = 277.97'$
 $e = 6.77'$
 $e = 5.0\%$
 $T.R. = 65'$
 $S.E. RUN = 160'$
 $P.C. STA = 3+78.89$
 $P.T. STA = 6+56.86$



52ND AVENUE RAMP 1 - STA. 0+00 TO STA. 6+40

PLAN	DATE
BY	
REVISIONS	
NO.	DESCRIPTION
1	
2	
3	
4	
5	
6	
7	
8	
9	
10	

PROFILE	DATE
BY	
REVISIONS	
NO.	DESCRIPTION
1	
2	
3	
4	
5	
6	
7	
8	
9	
10	

PROFILE OF EXISTING GRADE ALONG C
 STAGE I PHASE I
 LT & RT STA. 2+00 - 6+40
 EARTH EXCAVATION = 465 C.Y.
 EMBANKMENT = 7913 C.Y.
 FURNISHED EXCAVATION = 7564 C.Y.
 * TOTAL DOES NOT INCLUDE GRANULAR EMBANKMENT

STAGE I PHASE I DRAINAGE WAY
 RT STA. 2+00 - 4+50
 EARTH EXCAVATION = 733 C.Y.
 EMBANKMENT = 0 C.Y.
 WASTE = 550 C.Y.

STAGE I PHASE I BERM
 RT STA. 1+00 - 6+40
 EARTH EXCAVATION = 7 C.Y.
 EMBANKMENT = 1173 C.Y.
 FURNISHED EXCAVATION = 1166 C.Y.
 * TOTAL DOES NOT INCLUDE GRANULAR EMBANKMENT