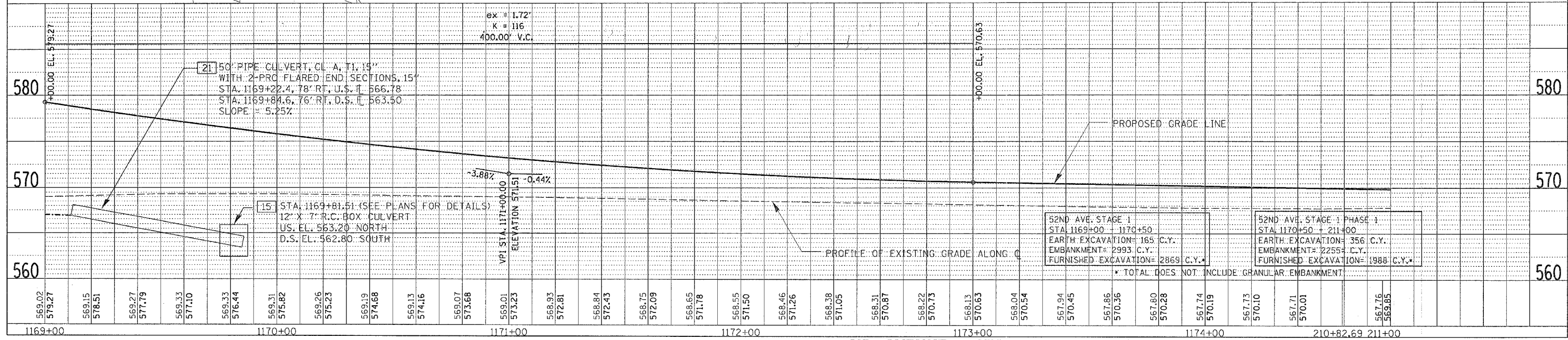
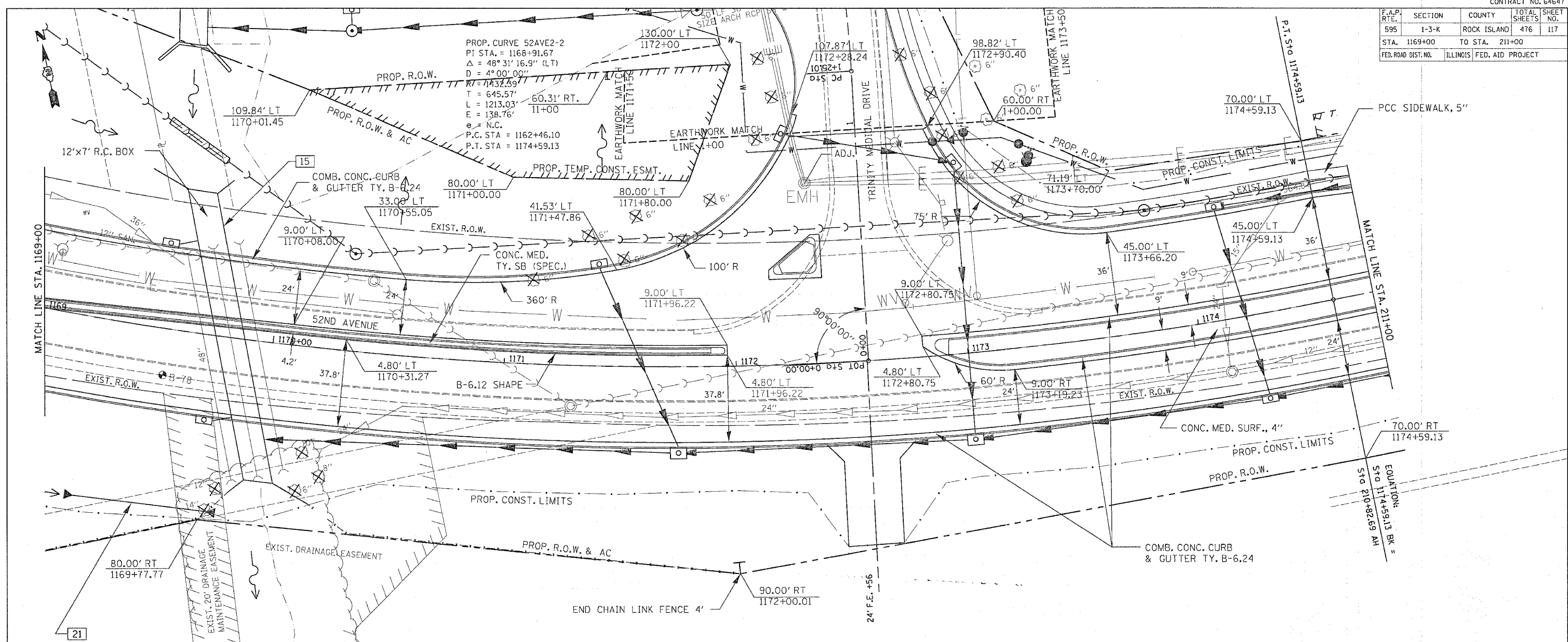


F.A.P. RTE.	SECTION	COUNTY	TOTAL SHEETS	SHEET NO.
595	1-3-K	ROCK ISLAND	476	117
STA. 1169+00		TO STA. 211+00		
FED. ROAD DIST. NO.		ILLINOIS FED. AID PROJECT		

DATE	BY	REVISION
		1. PLAN
		2. PROFILE
		3. EARTHWORK
		4. DRAINAGE
		5. UTILITIES
		6. STRUCTURE
		7. OTHER

DATE	BY	REVISION
		1. PROFILE
		2. EARTHWORK
		3. DRAINAGE
		4. UTILITIES
		5. STRUCTURE
		6. OTHER



52ND AVENUE - STA. 1169+00 TO STA. 1174+59.13 BK - STA. 210+82.69 AH TO 211+00