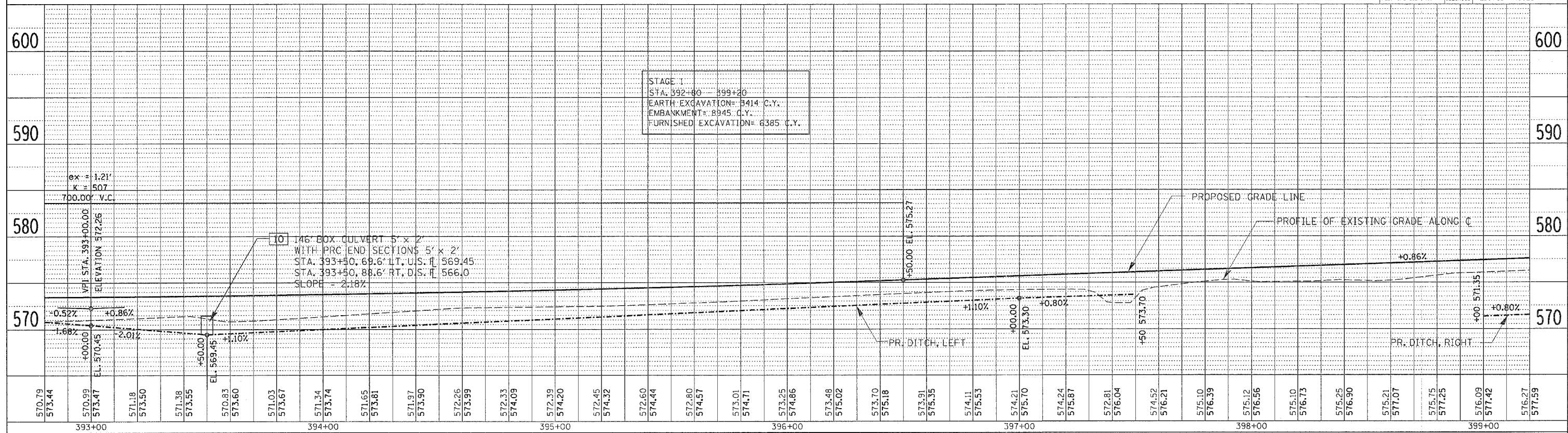
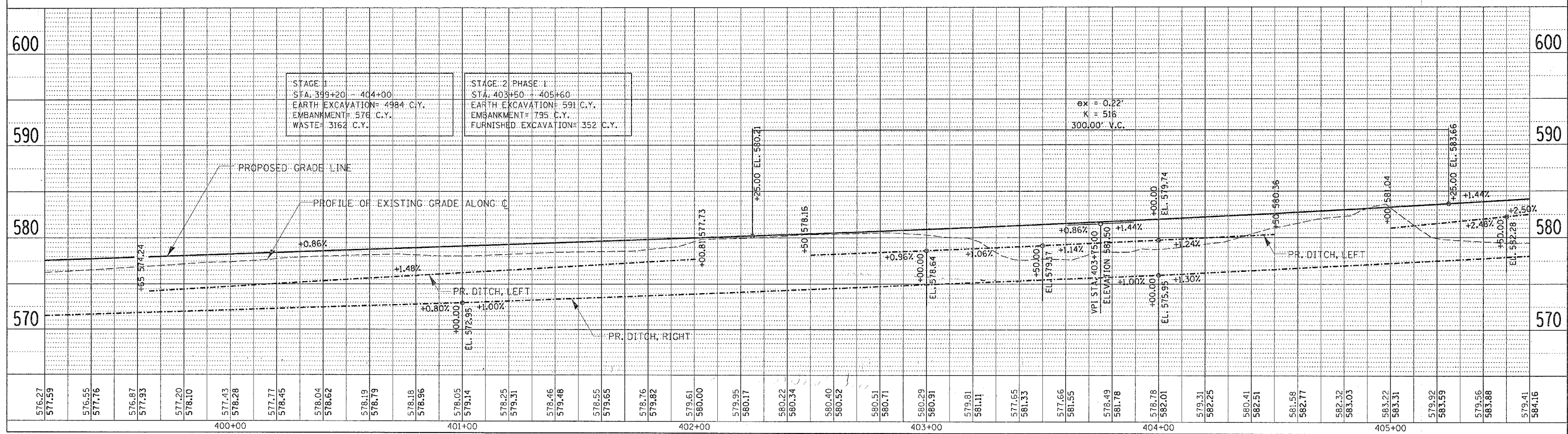


F.A.P. RTE.	SECTION	COUNTY	TOTAL SHEETS	SHEET NO.
595	1-3-K	ROCK ISLAND	476	109
STA. 367+20		TO STA. 380+00		
FED. ROAD DIST. NO.	ILLINOIS	FED. AID PROJECT		

PLAN	REVISIONS	DATE
NO. 1	BY	
NO. 2	BY	
NO. 3	BY	
NO. 4	BY	
NO. 5	BY	



PROFILE	REVISIONS	DATE
NO. 1	BY	
NO. 2	BY	
NO. 3	BY	
NO. 4	BY	
NO. 5	BY	



JOHN DEERE ROAD - STA. 392+80 TO 405+60