

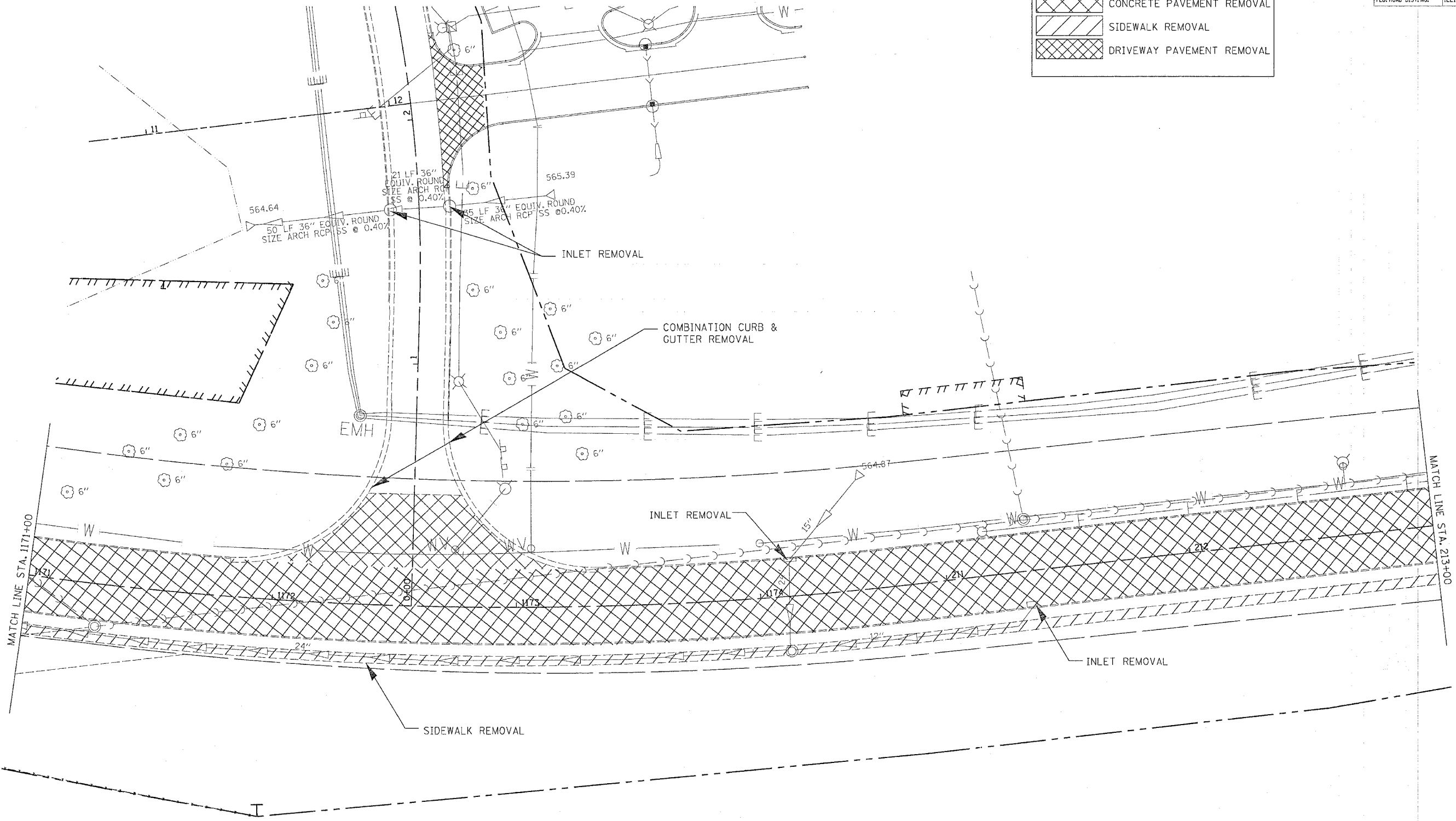
F.A.P. RTE.	SECTION	COUNTY	TOTAL SHEETS	SHEET NO.
595	1-3-K	ROCK ISLAND	476	96
STA. 412+00		TO STA. 417+10.16		
FED. ROAD DIST. NO.		ILLINOIS FED. AID PROJECT		

PAVEMENT REMOVAL

	CONCRETE PAVEMENT REMOVAL
	SIDEWALK REMOVAL
	DRIVEWAY PAVEMENT REMOVAL

DATE	
BY	
REVIEWED	
PLANNED	
NOTED	
FILED	
NO.	

DATE	
BY	
REVIEWED	
PLANNED	
NOTED	
FILED	
NO.	



MATCH LINE STA. 1171+00

MATCH LINE STA. 213+00