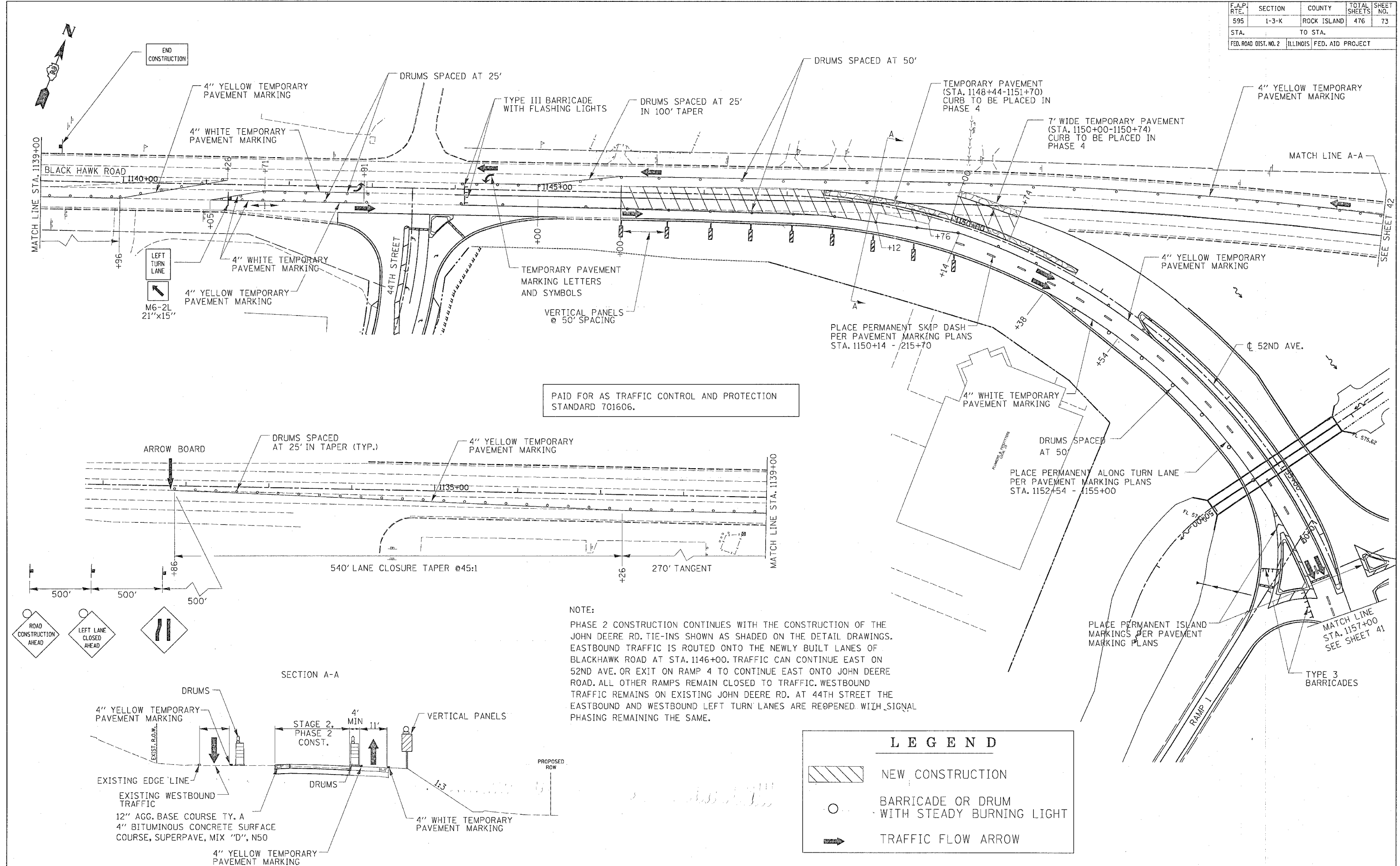
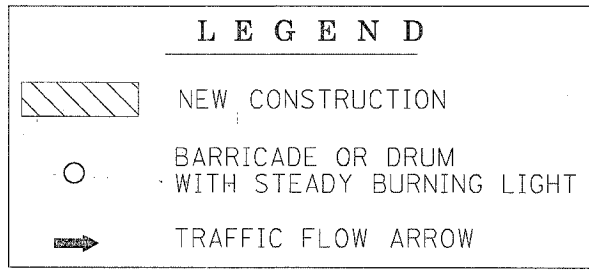
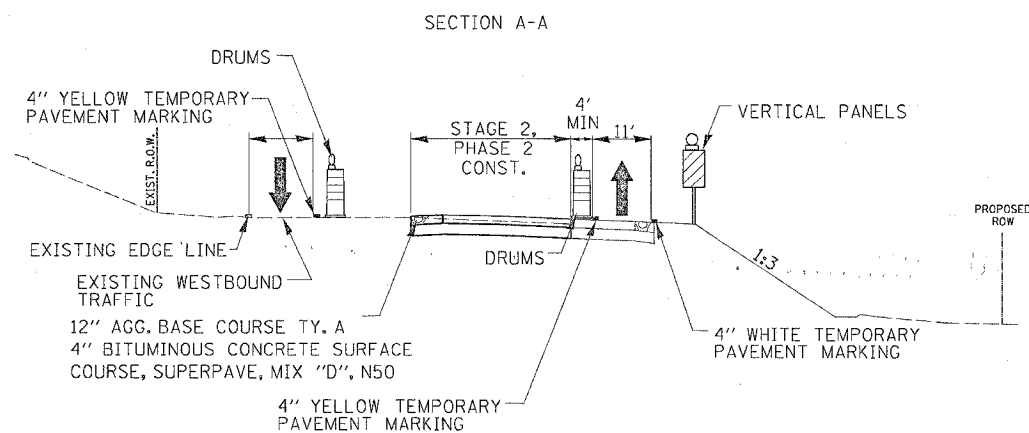


F.A.P. RTE.	SECTION	COUNTY	TOTAL SHEETS	SHEET NO.
595	1-3-K	ROCK ISLAND	476	73
STA.		TO STA.		
FED. ROAD DIST. NO. 2		ILLINOIS FED. AID PROJECT		



PAID FOR AS TRAFFIC CONTROL AND PROTECTION STANDARD 701606.

NOTE:
 PHASE 2 CONSTRUCTION CONTINUES WITH THE CONSTRUCTION OF THE JOHN DEERE RD. TIE-INS SHOWN AS SHADED ON THE DETAIL DRAWINGS. EASTBOUND TRAFFIC IS ROUTED ONTO THE NEWLY BUILT LANES OF BLACKHAWK ROAD AT STA. 1146+00. TRAFFIC CAN CONTINUE EAST ON 52ND AVE. OR EXIT ON RAMP 4 TO CONTINUE EAST ONTO JOHN DEERE ROAD. ALL OTHER RAMPS REMAIN CLOSED TO TRAFFIC. WESTBOUND TRAFFIC REMAINS ON EXISTING JOHN DEERE RD. AT 44TH STREET THE EASTBOUND AND WESTBOUND LEFT TURN LANES ARE REOPENED WITH SIGNAL PHASING REMAINING THE SAME.



STAGE 2 BLACKHAWK ROAD/JOHN DEERE EXPRESSWAY PHASE 2 CONSTRUCTION PLAN