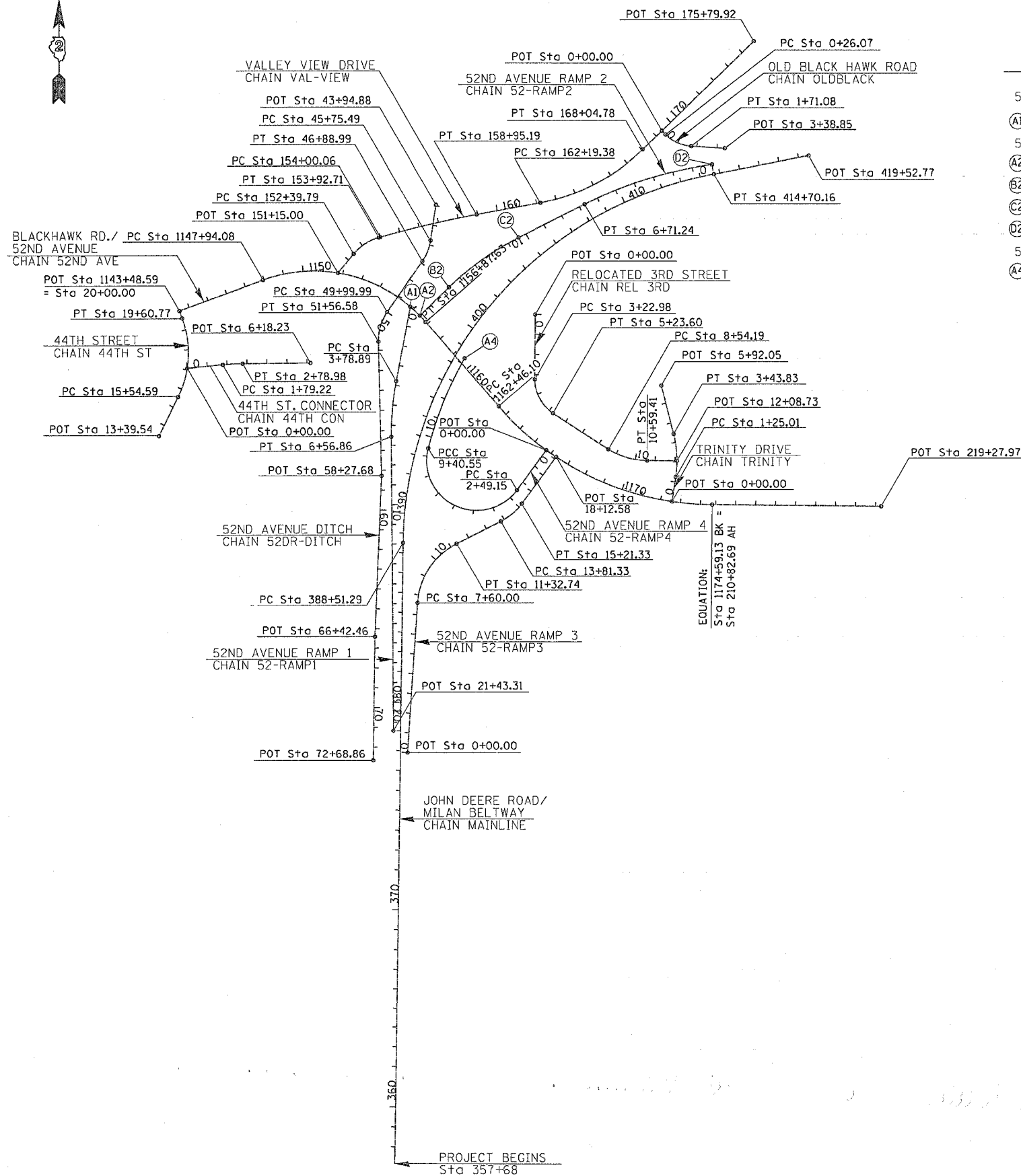
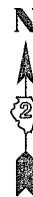


F.A.P. RTE.	SECTION	COUNTY	TOTAL SHEETS	SHEET NO.
595	1-3-K	ROCK ISLAND	476	31
STA.		TO STA.		
FED. ROAD DIST. NO.		ILLINOIS	FED. AID PROJECT	

HORIZONTAL AND VERTICAL CONTROL



LEGEND

- 52ND AVE. RAMP 1
- Ⓐ1 POT Sta 0+00.00
- 52ND AVE. RAMP 2
- Ⓐ2 POT Sta 16+76.10
- Ⓑ2 PT Sta 14+72.75
- Ⓒ2 PC Sta 10+41.32
- Ⓓ2 PC Sta 0+00.00
- 52ND AVE. RAMP 4
- Ⓐ4 PT Sta 14+27.05

BENCH MARKS

CHAIN	NORTH	EAST	ELEVATION	STATION	OFFSET	DESCRIPTION
52ND AVE	1748141.80	400616.67	570.66	216+37.61	30.88' LT	N. NW BOLT ON 1ST HYD. W. OF 7TH ST., N. SIDE 52ND AVE.
52ND AVE	1748176.18	399904.26	570.51	1172+95.39	49.17' LT	N. NW BOLT ON 3RD HYD. W. OF 7TH ST., NE COR. 52ND AVE & TRINITY ENTRANCE
52ND AVE	1748252.53	399530.76	571.56	1169+03.31	26.31' LT	N. NW BOLT ON 4TH HYD. W. OF 7TH ST., N. SIDE 52ND AVE. SW COR. TRINITY MEDICAL CENTER
52ND AVE	1748422.52	399228.80	572.80	1165+49.81	23.31' LT	N. NW BOLT ON HYD., NE COR. 3RD ST. & 52ND AVE.
REL_3RD	1748758.91	399144.54	575.72	3+10.44	29.25' RT	TOP CEN. BOLT ON HYD. SE COR. SONIC RESEARCH BLDG.
MAINLINE	1749355.41	399159.55	584.31	404+60.54	19.02' RT	TOP CEN. BOLT ON HYD. NW COR. 3RD ST. & ENT. TO ROSS MEDICAL SUPPLIES
52ND_AVE	1749274.41	398137.09	581.53	1151+23.68	10.24' RT	PK NAIL IN N. FACE OF PP, S. SIDE BLACKHAWK ROAD CEN. OF PLUMBERS & PIPEFITTERS LOC. 25
52ND_AVE	1749004.37	397370.74	586.27	1142+95.97	70.86' RT	BOLT IN WORD "MUELLER" ON HYD. SW COR. 44TH ST. & BLACKHAWK RD.
44TH_ST	1748756.27	397460.55	579.00	16+68.30	35.16' RT	BOLT IN WORD "MUELLER" ON HYD. E. SIDE 44TH ST. 50' ± S. OF S. ENT. TO TEXACO FOOD MART
44TH_ST	1748528.92	397300.10	576.34	14+00.27	21.34' LT	BOLT IN WORD "MUELLER" ON HYD. W. SIDE 44TH ST. 50' ± S. OF ENT. TO ROCK VALLEY OFFICE PLAZA
44TH_ST	1748605.60	397717.81	576.87	16+15.35	324.87' RT	CHISELED "□" ON SE COR. OF CONC. ELEC. PAD, 100' S. OF HIGHLAND TOYOTA BODY SHOP
VAL-VIEW	1749442.87	398652.84	586.21	156+41.46	77.92' RT	CHISELED "□" ON HEADWALL S. SIDE OF J. DEERE RD. & W. OF 3RD ST.
VAL-VIEW	1749726.92	399239.58	592.13	162+79.29	85.54' LT	PK NAIL IN PP NE COR. OF BLACKHAWK RD. & 3RD STREET
VAL-VIEW	1749798.05	399591.95	590.70	166+47.32	1.91' LT	TOP CEN. BOLT ON FIRE HYD. N. SIDE BLACKHAWK RD. - 2ND FIRE HYD. EAST OF 3RD ST.
MAINLINE	1749974.17	400816.97	589.96	178+86.41	61.05' LT	CHISELED "□" W. SIDE CONC. BASE TRAFFIC SIGNAL NW COR. OF BLACKHAWK RD. & 7TH ST.